

Newcastle Inner City Bypass – Rankin Park to Jesmond

Project update

The NSW Government is funding the fifth section of the Newcastle Inner City Bypass between Rankin Park and Jesmond. The Department of Planning and Environment placed the environmental impact statement on public exhibition between 16 November and 16 December 2016. Roads and Maritime Services is carrying out additional investigations to prepare a submissions and preferred infrastructure report which will document all issues raised and provide responses.

In response to community submissions during the exhibition of the environmental impact statement, a number of design changes have been made to the project. We have also made changes through the ongoing review of the concept design and consultation with other government agencies.

To learn more about the project visit rms.nsw.gov.au/rp2j

You can also collect a printed project update which includes more information from:

- Service NSW centres at Newcastle, Wallsend and Warners Bay
- Newcastle City Council and Lake Macquarie City Council.

Features

- 3.4 kilometres of four lane divided road
- A northern interchange at Newcastle Road
- A hospital interchange providing full access between the John Hunter Hospital precinct and the bypass
- A southern interchange at Lookout Road
- Structures along the bypass for drainage, animal and bushwalker access
- Off-road provisions for pedestrians and cyclists including a shared path bridge over Newcastle Road at Jesmond Park and an east-west grade separated shared path for the Jesmond Park cycleway.

Further information



rms.nsw.gov.au/rp2j



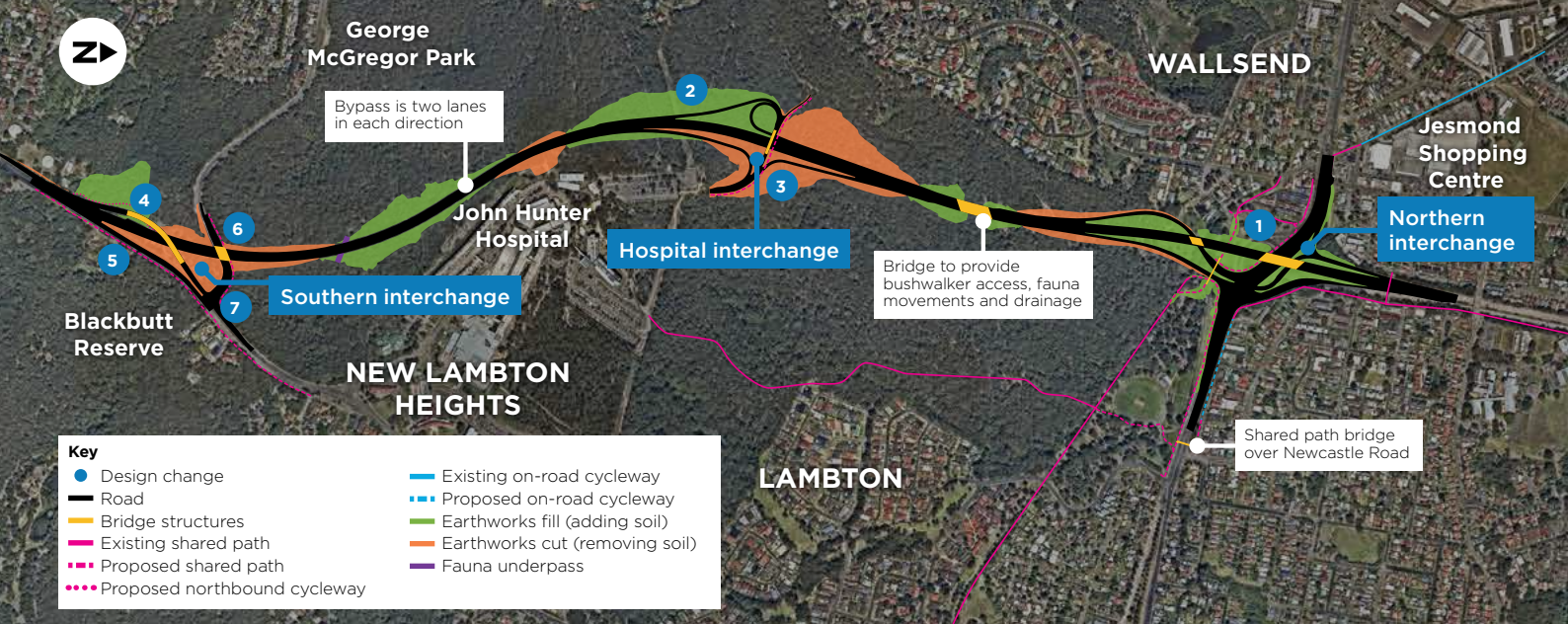
rp2j@arecongroup.com



1800 818 433 (during business hours)



If you need help understanding this information, please contact the Translating and Interpreting Service on 131 450 and ask them to call us on 1800 818 433.



Design changes at Northern interchange

- 1 An east-west grade separated shared path would now be provided for the Jesmond Park cycleway to improve accessibility for pedestrians and cyclists. A shared path bridge would lead to an underpass of the bypass.

Design changes at Hospital interchange

- 2 South facing ramps added to deliver a full interchange, providing access in all directions between the bypass and the hospital precinct for all hospital users including public, staff and emergency services.
- 3 Traffic lights added at the shared path crossing of the southbound off-ramp to improve safety for pedestrians and cyclists.

Design changes at Southern interchange

- 4 A northbound cycleway connection added from Lookout Road to the bypass to improve safety for on-road cyclists.
- 5 A southbound cycleway connection controlled by traffic lights added from the bypass to Lookout Road to improve safety for on-road cyclists.
- 6 The proposed pedestrian footpath on the northern side of McCaffrey Drive would now be replaced with a wider shared path for use by both pedestrians and cyclists.
- 7 The pedestrian crossings on the left turn from McCaffrey Drive onto Lookout Road, and across Lookout Road would now both be shared path crossings controlled by traffic lights.