

Newcastle Inner City Bypass – Rankin Park to Jesmond

Project update

Transport for NSW | July 2020



Artist's impression of the refined northern interchange design looking south.

The NSW Government is funding the fifth section of the Newcastle Inner City Bypass between Rankin Park and Jesmond. This section is a proposed new 3.4 kilometre bypass between Lookout Road at New Lambton Heights and Newcastle Road at Jesmond, passing to the west of the John Hunter Hospital.

We are continuing to refine the design in response to community feedback and have made a number of improvements to the northern and southern interchanges. Information about the design refinements are included in this update.

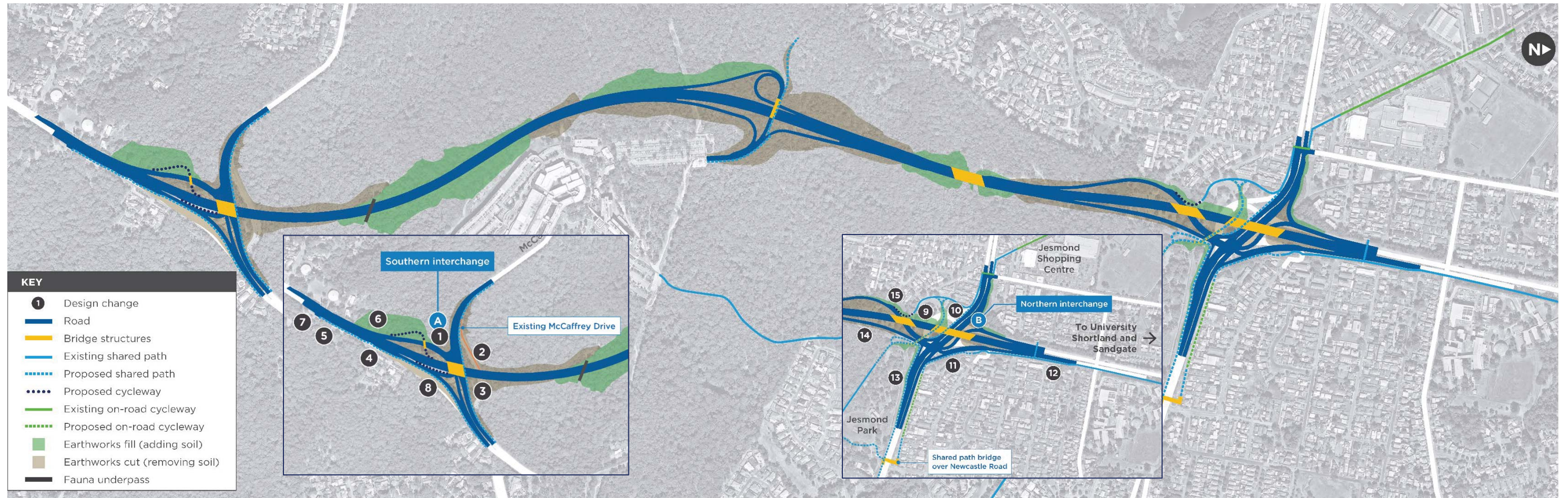
Building the fifth section will complete the north-south bypass connection for road users travelling between the Pacific Highway at Sandgate and the Pacific Highway at Bennetts Green. The already complete sections of the bypass have improved traffic flow for road users, and this critical connection will remove a further 11 sets of traffic lights. Traffic times are estimated to reduce by 80 per cent during the morning and afternoon peaks for the 40,000 to 60,000 users of this route each day.

Features

- 3.4 kilometres of divided road
- A northern interchange at Newcastle Road
- A hospital interchange providing full access between the John Hunter Hospital precinct and the bypass
- A southern interchange at Lookout Road
- Structures along the bypass for drainage, animal and bushwalker access
- Off-road provisions for pedestrians and cyclists including a shared path bridge over Newcastle Road at Jesmond Park and an east-west shared path connecting with the Jesmond Park cycleway.

Transport for NSW is continuing to work collaboratively with NSW Health to ensure the design of this project aligns with planning for the John Hunter Health and Innovation Precinct. For more information about this NSW Health project, visit the [John Hunter Health and Innovation Precinct website](#).

Improvements to the proposed design



1. Combined two bridges over the bypass into one bridge.
2. Realigned McCaffrey Drive to improve traffic flow during construction.
3. Moved the traffic light intersection of Lookout Road and McCaffrey Drive onto the new single bridge to improve traffic flow and safety.
4. Added a new turning bay for road users travelling north. This new turning bay allows road users to safely turn back south and enter the Blackbutt carpark without crossing three lanes of traffic.
5. Removed the previously proposed traffic lights at the merge of the southbound bypass and Lookout Road to improve traffic flow.
6. Widened a section of Lookout Road to improve traffic flow.
7. Extended concrete barrier to improve safety.
8. Removed right turn into Blackbutt carpark.



9. Moved and realigned the shared path under the bridge over Newcastle Road to improve visibility, access and safety for pedestrians and cyclists.
10. Removed retaining walls at the bridge to improve visibility for road users.
11. Moved exit ramp away from properties on Robert Street to reduce noise and visual impact for residents.
12. Widened the Newcastle Road southbound exit ramp to improve traffic flow.
13. Reduced the impact on Jesmond Park by shortening the left turn lane and moving the proposed utility maintenance area.
14. Extended the left turn lane length on to the bypass to improve traffic flow and safety.
15. Rearranged traffic lanes to better meet traffic demands for road users turning onto Newcastle Road.



Aerial view of shared path bridge building site at Newcastle Road, Jesmond.

Shared path bridge

Work is continuing on the shared path bridge over Newcastle Road at Jesmond. We have finished all major utility and piling work and continue to build on both sides of Newcastle Road.

The 33-metre main span of the bridge is due to be installed later this year, weather permitting. Installation of the bridge span will require a temporary closure of Newcastle Road (about one night) and local road detours.

We are continuing to plan the installation and more information will be provided to you soon.



Artist's impression of the shared path bridge.

Contact us

If you have any questions or would like more on the Rankin Park to Jesmond project, please contact our project team:



1800 818 433



rp2j.community@arecongroup.com



nswroads.work/rp2j



If you need help understanding this information, please contact the Translating and Interpreting Service on 131 450 and ask them to call us on 1800 818 433.