



Newcastle Inner City Bypass Rankin Park to Jesmond

Project Update

November 2022

nswroads.work/rp2j



Artist impression of Newcastle Road heading westbound towards Wallsend, passing under the bypass

The Australian and NSW governments are funding the Rankin Park to Jesmond section of the Newcastle Inner City Bypass. The bypass will be built to the west of John Hunter Hospital.

In July 2022, a design and construct contract was awarded to Fulton Hogan Construction Pty Ltd who will finalise the design for the bypass and start major construction in December. The project will take three years to complete, weather permitting.

Project overview

The project will involve building a 3.4 kilometre four-lane divided road including:

- a northern interchange at Newcastle Road
- an interchange providing access to the John Hunter Hospital precinct
- a southern interchange at Lookout Road
- structures to improve connectivity in the bushland for people and animals
- off-road provisions for pedestrians and cyclists.



Project benefits

The project will provide traffic relief to the surrounding road network, in particular the existing route of Lookout Road, Croudace Street and Newcastle Road, which is currently used by about 40,000 to 60,000 vehicles each day.

The new bypass will remove up to 30,000 vehicles each day from the existing route.

When completed, motorists travelling on the new section of bypass would avoid up to 11 sets of traffic lights along the existing route.

The bypass is expected to reduce travel times by up to 80 per cent during morning and afternoon peaks.

Connectivity for the John Hunter Hospital precinct will be improved with a full interchange on the bypass providing access for the hospital from the north and south. This will help to improve access for staff, patients and visitors travelling to and from the hospital precinct.

Safety will be improved on the surrounding road network with crashes predicted to reduce by 32 per cent.

Early work

A shared path bridge over Newcastle Road at Jesmond was completed in early 2021 as early work on the project.

Early work also included relocation of major utilities and preliminary road work on Lookout Road and McCaffrey Drive which was completed in August 2022. This early work will help to accelerate work at the southern interchange when major work starts..



A shared path bridge over Newcastle Road at Jesmond was completed in early 2021 as early work on the project.

Work underway

Fulton Hogan has started early works and site establishment for the main bypass within the project alignment, and on surrounding local roads.



Utility investigations underway at Jesmond

Work includes site investigations, installing temporary fencing and barriers, minor vegetation clearing, setting up site compounds and environmental controls.

Work will be carried out from 7am to 6pm on weekdays and 8am to 5pm on Saturdays until December, weather permitting. To minimise impacts to motorists, some night work will also be carried out.



Artist impression of the bypass heading northbound towards Jesmond, passing under McCaffrey Drive

Upcoming work

In the next three months work activities will include:

- ongoing site establishment activities, including setting up site compounds
- environmental protection, mitigation and controls ahead of construction
- archaeological salvage for the historical 1920's era Hollywood camp
- installation of long-term traffic controls at Jesmond roundabout and on Lookout Road
- tree clearing along the project alignment.

Traffic changes

There will temporary lane closures and reduced speed limits on the surrounding roads.

Please keep to the sign posted speed limits and follow the direction of traffic controllers.

For the latest traffic updates, call 132 701, visit livetraffic.com or check the Live Traffic App.

Cycling and pedestrian impacts

The shared path at Jesmond Park has been detoured via Illoura Street to allow a minor site compound to be set-up at the western end of the park. This detour will remain in place during major construction.

A number of tracks in the bushland will be closed during and after construction. We will keep the community informed about any changes using signage and information on the project website.

Compound site

The project's main offices and engineering site will be located near the Mater Hospital at Waratah, on the old water reservoir site, which is accessed via Platt Street. The site will be operating from late November.

Protecting biodiversity and reducing impacts on the environment

Transport seeks to avoid, minimise and mitigate the impacts of roads and other infrastructure on biodiversity and the environment during the development and design of its projects.

Where impacts cannot be avoided or mitigated, Transport looks to offset these impacts using the NSW BioBanking Scheme administered by the NSW Department of Planning and Environment.

As part of the Rankin Park to Jesmond project's clearing mitigations, all vegetation within the project footprint including an additional 10 metre buffer will be offset, despite clearing limits for the project being much smaller.

When the project is complete, more than 50 hectares of similar vegetation to the project corridor will be protected for future generations.



Black-Eyed Susan - (*Tetratheca juncea*)

In addition to biodiversity offsetting, a number of initiatives will be carried out to further mitigate impacts to the environment before tree clearing starts in early 2023.

We are working with Landcare to allow the **salvage of Black-Eyed Susan (*Tetratheca juncea*)** from the project alignment to be replanted elsewhere.

We are **identifying trees suitable for reuse**, including as bridge timber on heritage bridge projects around the Hunter Region, for reuse onsite for fauna habitat and landscape rehabilitation, plus for reuse in conservation projects delivered by Local Land Services.

We will be installing **additional habitat** in the form of carved hollows, nest boxes and reuse of salvaged hollows.

The carved hollows will be installed using a 'Hollowhog' which allows new tree hollows to be carved while having minimal impact on the health and integrity of the tree.



Two lorikeets on a carved hollow

As the project progresses, various **fauna connectivity structures** will be installed to ensure connectivity between the adjacent fauna habitat, including fauna underpasses, fauna culverts, rope bridges and fauna fencing.

While working in the area, we will also be **removing priority weeds** and remediating the area along the project alignment.

A dedicated Ecologist will oversee clearing activities and the relevant mitigation measures.



Hollywood camp update

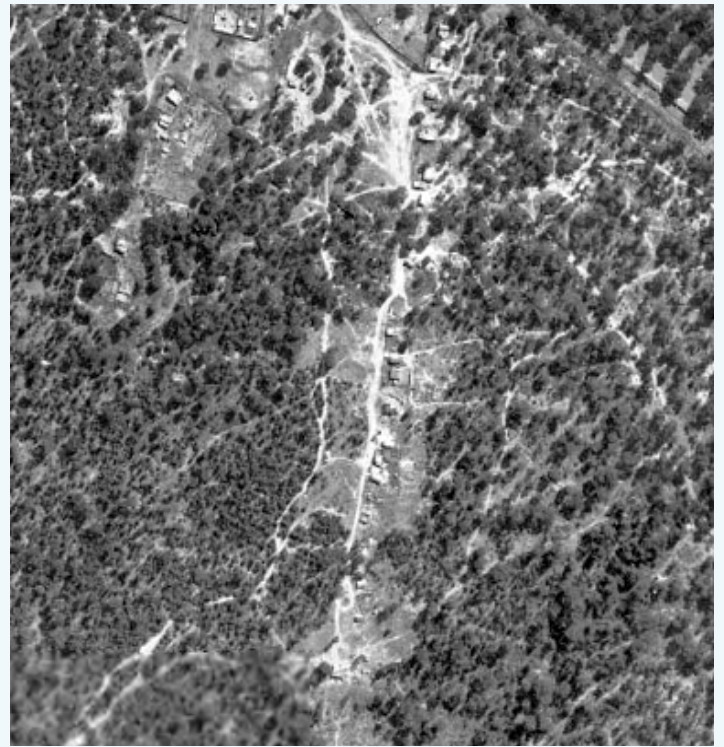
The Lambton Camp, known to some as Doggyville or more popularly by the community as Hollywood, was located in Jesmond Park, from the 1920s until about 1960.

Historical records indicate the camp:

- was established in the 1920s, around the time the Great Depression hit Newcastle
- housed a community of up to 130 people, including men, women, children and families who lived in about 40 different buildings
- included some residents who lived there for decades
- was not connected to formal council services like electricity and water, but some residents connected to utilities through their own means
- was vacated in 1960, including through evictions, and demolished soon after.

Transport is researching the history of Hollywood and will be carrying out an archaeological investigation and salvage of the site before major construction starts.

We will be looking for potentially historically significant artefacts and collecting information to make sure we preserve this significant part of Newcastle's history.



Portion of a 1944 aerial photograph showing a central track running through Hollywood. Source: <https://lachlanwetherall.com/then-and-now/hollywood/> (Run 5, Image 01465, Newcastle Library, Local Studies)



Contact us

If you have any questions or would like more information please contact our project team:



1800 818 433 (business hours)



RP2JCommunity@fultonhogan.com.au



nswroads.work/rp2j



Scan the QR code to visit the project webpage.

Interactive online project portal

We will soon be launching an online interactive project portal. The portal will feature an interactive map showing the project design, before and after images, animation videos, work activity and much more. We will regularly update the portal during construction.

Join our e-update list

To subscribe to receive project updates via email, including an alert for when the portal launches, please send your name and email to RP2JCommunity@fultonhogan.com.au



This document contains important information about Transport projects in your area. If you require the services of an interpreter, please contact the Translating and Interpreting Service on 131 450 and ask them to call Transport Projects on 1800 818 433. The interpreter will then assist you with translation.

Privacy: Transport for NSW (TfNSW) is subject to the *Privacy and Personal Information Protection Act 1998* ("PPIP Act") which requires that we comply with the Information Privacy Principles set out in the PPIP Act. All information in correspondence is collected for the sole purpose of assisting in the delivery of this project. The information received, including names and addresses of respondents, may be published in subsequent documents unless a clear indication is given in the correspondence that all or part of that information is not to be published. Otherwise TfNSW will only disclose your personal information, without your consent, if authorised by the law. Your personal information will be held by TfNSW. You have the right to access and correct the information if you believe that it is incorrect.