



Transport for NSW

Parkes Bypass

Community Consultation Report
February 2020



Contents

| | |
|--------------------------|----------|
| Executive Summary | 1 |
|--------------------------|----------|

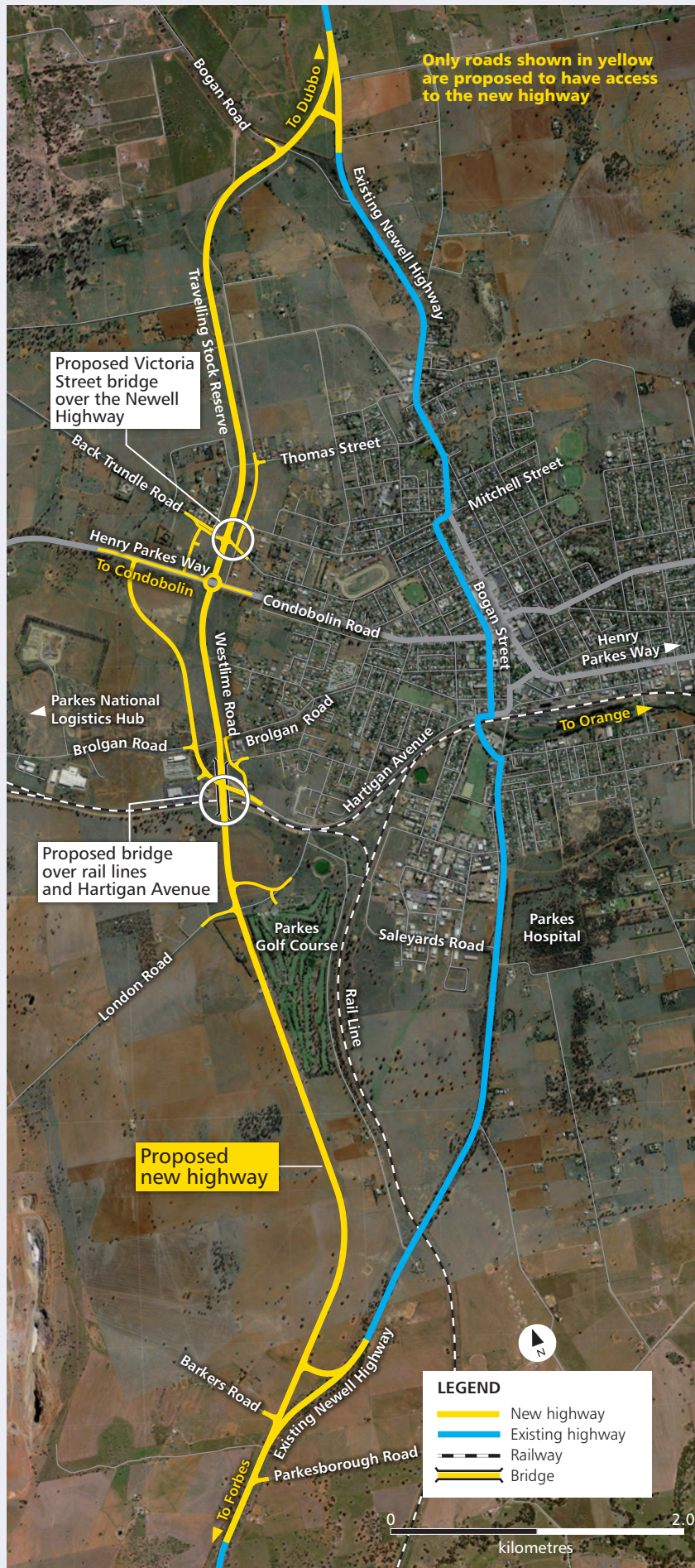
| | |
|------------------------|----------|
| 1. Introduction | 2 |
| 1.1 Background | 2 |
| 1.2 The proposal | 3 |

| | |
|--|----------|
| 2. Consultation approach | 6 |
| 2.1 Consultation objectives | 6 |
| 2.2 Values | 6 |
| 2.3 Consultation method | 6 |
| 2.4 Communications and consultation activities | 8 |

| | |
|--------------------------------|-----------|
| 3. Consultation summary | 12 |
| 3.1 Overview | 12 |
| 3.2 Overview of issues raised | 14 |
| 3.3 Next steps | 15 |

| | |
|--|-----------|
| Appendices | 16 |
| Appendix A - Community update | 16 |
| Appendix B - Postcard | 22 |
| Appendix C - FAQs | 23 |
| Appendix D - Email to stakeholders | 27 |
| Appendix E - Feedback form | 28 |
| Appendix F - Newspaper advertisement in Parkes Champion Post | 31 |
| Appendix G - Newspaper advertisement in Parkes Phoenix | 32 |
| Appendix H - Digital advertisement in Parkes Champion Post | 33 |
| Appendix I - Radio advertisement script | 34 |
| Appendix J - Media release | 35 |
| Appendix K - Facebook posts | 36 |
| Appendix L - Poster | 37 |
| Appendix M - Banner | 38 |

| | |
|--|----|
| Figures and tables | |
| Table 2.1 - Property owner meetings | 7 |
| Table 2.2 - Summary of communications and consultation activities | 9 |
| Table 3.2 - Breakdown of attendees at information sessions and stakeholder briefings | 13 |
| Figure 1.1 - Parkes Bypass Concept Design | ii |
| Figure 3.1 - Number of times key issue categories were raised by the community. | 14 |
| Figure 3.2 - Consultation timeline. | 15 |



Parkes Bypass Concept Design

Executive Summary

This Community Consultation Report provides a summary of the community and stakeholder consultation carried out by Transport for NSW to support the display of the concept design and Review of Environmental Factors (REF) for the Parkes Bypass. Transport for NSW ran the display of the Parkes Bypass concept design and REF from Monday 1 July to Friday 9 August 2019, inviting community and stakeholder submissions on the design and REF during this time.

The concept design that went on display for the Parkes Bypass is a 10.5-kilometre road to the west of Parkes which will bypass the town centre. The Parkes Bypass will provide an alternative route west of the Newell Highway to allow motorists, particularly heavy vehicles, to travel around rather than through Parkes.

The Newell Highway is currently constrained by level crossings, four 90-degree bends in the road, narrow road and intersection widths and high pedestrian traffic through the CBD. A Parkes Bypass will further support local traffic, tourists, farmers and heavy vehicles transporting freight between Queensland and Victoria.

Public display of the concept design and REF returned a total of 119 submissions. Of the 119 submissions received, 117 were from the general community with one received from Parkes Shire Council and one from NSW Police. Of the community submissions, 15 per cent were in support of the proposal, seven per cent objected to the proposal and nine per cent were partially supportive of the proposal. The remaining 68 per cent of submissions offered no position on whether they supported or objected to the proposal.

Key issues raised by the community about the Parkes Bypass concept design include:

- Hazards and risks, particularly in relation to crossing the Condobolin Road roundabout
- Requests to change the shared pedestrian/cycleway bridge between Victoria Street and Back Trundle Road
- Requests to change the roundabout at Condobolin Road to a light traffic overpass.

Key issues raised by the community about operational impacts of the Parkes Bypass include:

- Noise and vibration impacts, particularly associated with braking, accelerating and decelerating at the approach to the Condobolin Road roundabout
- Impacts to trade and business incomes in Parkes town centre once the bypass is finished
- Traffic, transport and access impacts, particularly for people travelling to Parkes Christian School and residences in Shallow Rush.

We have considered these issues in finalising the next steps of the Parkes Bypass and where possible addressed community recommendations and concerns through design changes of the displayed Concept Design. These changes will be communicated to the community of Parkes and addressed in more detail in a detailed Submissions Report. The report examines individual submissions, extracts and collates the issues raised and provides Transport for NSW's response to these issues. It is available to view on the project website at nswroads.work/parkesupgrade.

The decision

We will take the community and stakeholder preferences into account when finalising the Parkes Bypass. Transport for NSW as the determining authority will consider the information in the REF, Submissions Report and Community Consultation Report and make a decision on whether or not to proceed with the proposal. Transport for NSW will inform the community and stakeholders of this decision, and if the decision is made to proceed, will continue to consult with the community and stakeholders prior to and during the construction phase.

1. Introduction

Between Monday 1 July to Friday 9 August 2019, Transport for NSW displayed the concept design and Review of Environmental Factors (REF) for the proposed Parkes Bypass. This display period was supported by a range of consultation activities to encourage community and stakeholder feedback on the proposed project.

Transport for NSW is committed to involving the community and its stakeholders in the development of road designs and options to improve safety, connectivity and liveability in local areas.

1.1. Background

The New South Wales Government has invested \$13.4 million toward detailed planning for the upgrade of the Newell Highway at Parkes as part of the \$500 million Newell Highway upgrade program. The Federal Government has recently committed \$100 million for the construction of the

road, as part of the Roads of Strategic Importance initiative (ROSI) Toowoomba to Seymour corridor \$510 million program.

The Newell Highway is a major highway in NSW which connects Melbourne with Brisbane and supports the movement of local and interstate traffic, tourists, freight and livestock. The Newell Highway's current route through Parkes includes four 90-degree bends which are not safe for heavy vehicles. The highway also crosses two major railway lines at level crossings which can cause the Newell Highway to close for up to 80 minutes each day. The proposed Parkes Bypass will provide safer journeys, easier freight access through Parkes and faster travel time for all road users.

The preferred option for the Bypass is a 10.5-kilometre road to the west of Parkes which will bypass the town centre. This option was decided following investigations and consultation with the community and stakeholders.



Parkes Shire Council Mayor Ken Keith, Deputy Prime Minister and Minister for Infrastructure, Transport and Regional Development Michael McCormack, NSW Minister for Regional Transport and Roads Paul Toole and Transport for NSW Director Western Region Alistair Lunn at the announcement of the Parkes Bypass display period on 26 June 2019

Previous consultation

Feedback was invited on the proposed bypass design from December 2016 to February 2017. Consultation activities undertaken during this period included an online survey, nine drop-in community information sessions, meetings with key stakeholders and face-to-face meetings with affected residents, key businesses and landowners.

Transport for NSW received 220 responses to the online survey and over 800 people attended the nine drop-in community information sessions. Feedback provided was used to assist in determining the preferred option for the Parkes Bypass.

A Community Consultation Report on the outcomes of this consultation was prepared in December 2017, and is available to view on the project website at nswroads.work/parkesupgrade.

1.2. The proposal

The proposal involves the construction of a 10.5-kilometre bypass of the Newell Highway at Parkes that would divert heavy vehicle traffic out of the Parkes town centre. It would be located about 1.5 to two kilometres west of the existing Newell Highway and would generally include one lane in each direction. The Parkes Bypass would depart from the existing Newell Highway to the south of Barkers Road and would re-join the highway to the north of Parkes near Maguire Road. Images below show the design of the proposed bypass.



Artist's impression of the Parkes Bypass facing north

1. Introduction continued

The key features of the bypass would include:

- A two-lane road (one lane in each direction) to the west of Parkes
- New intersections and a four-way roundabout at Condobolin Road
- A bridge over the Broken Hill and Parkes to Narromine rail lines at Hartigan Avenue
- A shared pedestrian and cycleway bridge connecting Victoria Street and Back Trundle Road
- Future connectivity to the Parkes Special Activation Precinct (SAP)
- An extension of Hartigan Avenue to connect Brolgan Road and Condobolin Road
- Changes to local road access and new connections to the bypass.

The objectives of the proposed Parkes Bypass are to improve:

- Freight efficiency and productivity
- Access for high productivity vehicles through Parkes
- Travel delays caused by railway operations
- Travel times both north-south and east-west
- Amenity and safety for motorists and pedestrians on the existing route through town
- Access to the Parkes SAP.



Artist's impression of the four-way roundabout at Condobolin Road



View of the bridge over Hartigan Avenue and the Broken Hill and Parkes to Narromine rail lines



Better and more
reliable trips
for people, businesses and freight



Removing up to
1200 trucks
from local streets



Improving
freight productivity



Improve
motorist and
pedestrian safety

2. Consultation approach

This section provides an overview of the approach taken by Transport for NSW to engage with the community and other stakeholders.

Transport for NSW is committed to engaging with the community and stakeholders of Parkes to understand their needs and consider these when making decisions. The consultation approach outlined below is aligned to our commitment to keeping the community and stakeholders informed and to providing an opportunity for feedback, submissions and comments on the concept design.

Our approach to consultation focused on an equal opportunity for the community to engage with Transport for NSW representatives across a range of mediums comprising online, written and face-to-face engagement.

2.1 Consultation objectives

The objectives for consultation undertaken during the concept design and REF display are to:

- Build relationships and a database of interested and concerned community members that Transport for NSW will continue to engage with throughout the development of the Parkes Bypass
- Provide an update on the proposal to community members, businesses, landholders and stakeholders who were previously consulted with during preparation of the REF
- Provide the community with an opportunity to meet with the Transport for NSW project team and learn about the features of the Bypass
- Provide the community and stakeholders with an opportunity to have a say on the concept design and REF for the Bypass
- Seek feedback on the REF and concept design to be incorporated into the determination and detailed design stages of the proposal
- Inform the community and stakeholders about the next steps involved in the approval and delivery of the Bypass proposal.

2.2. Values

Our values underpin our decisions and behaviours when working with customers, colleagues, stakeholders and partners. These five values are:

- **Customer focus** - We place the customer at the centre of everything we do
- **Collaboration** - We value each other and create better outcomes by working together
- **Solutions** - We deliver sustainable and innovative solutions to NSW's transport needs
- **Integrity** - We take responsibility and communicate openly
- **Safety** - We prioritise safety for our people and our customers.

2.3. Consultation method

A range of activities were carried out in the lead up to, and during the 40-day display period to inform the community and stakeholders about what was happening and to encourage their involvement in the consultation process. These activities provided the community with a range of opportunities to learn more about the proposal, meet the project team and have their say. A detailed summary of communication and consultation activities is provided in Table 1. Further analysis of the outcomes of consultation is provided in Section 3.

During the display period, information was provided at 12 staffed community information sessions in Parkes. Members of the project team including the Project Manager, Communications Lead, Designer and Property Manager were available to provide detailed information and answer questions from the community about different aspects of the proposal. Information was also made available at two unstaffed display locations in Parkes.

Briefings were provided to key stakeholders during the display period including Parkes Christian School and the Parkes Chamber of Commerce. Monthly meetings have been held with Parkes Shire Council throughout the development of the Parkes Bypass.

Members of the project team met with property owners to provide information about the concept design and REF, and to allow Transport for NSW to understand and address any concerns.

Table 2.1 provides the nature of the potential property impact and the number of property owners that meetings were held with.

Table 2.1 Property owner meetings

| Potential property impact | Number of property owners |
|---------------------------|---------------------------|
| Acquisition | 6 |
| Noise impacts | 21 |
| Access impacts | 4 |
| Other impacts | 2 |






Meeting between the project team and property owners in Parkes

A total of 119 formal submissions were accepted until 16 August 2019. Of these, 51 submissions were provided via email, 13 were provided via letter, 54 were provided via the project website and one petition with 406 signatures was received.

Transport for NSW interacted with about 705 people during the 40-day display period. Stakeholders and community members were encouraged to provide feedback, leave comments, and make submissions in person to the project team or via online email, mail or phone contact. The community was able to contact Transport for NSW by using the contact details shown:

Contact us:

To provide your feedback or for more information, please contact our team on:

-  1800 741 636 (option 4)
-  newell.upgrade@rms.nsw.gov.au
-  rms.work/parkesupgrade
-  PO Box 334, Parkes NSW 2870

2. Consultation approach continued

2.4 Communications and consultation activities



Unstaffed display at Parkes Shire Council

Table 2.2. is a summary of the communications and consultation activities carried out across the Parkes Bypass concept design and REF display period from Monday 1 July to Friday 9 August.

Table 2.2 Summary of communications and consultation activities

| Tool/Activity | Description |
|--|--|
| Community Update (Appendix A) | A six-page community update was prepared to provide an update on the progress on the Parkes Bypass, communicate the design features and benefits, and invite community members to view the concept design and REF and make a submission. 1,500 copies were printed and made available at unstaffed displays and information sessions. Soft copies were available for download on the project website. |
| Postcard (Appendix B) | A double-sided postcard was produced and distributed on the first day of the consultation period to inform the community of the upcoming consultation activities and to encourage public participation. A total of 5,611 postcards were distributed to letterboxes in the town of Parkes and surrounds. Around 400 hard copies of the postcard were also made available at two unstaffed displays and twelve information sessions. |
| Frequently asked questions (FAQs) (Appendix C) | A fact sheet answering frequently asked questions about the proposal was produced, including information about the project background, economic impact, community involvement and noise impacts of the proposal. 500 copies were printed and made available at two unstaffed displays and information sessions. Soft copies were available for download on the project website. |
| Email to stakeholders (Appendix D) | An email was sent to 42 stakeholders advising the start of the consultation period, providing details of how to view the concept design and REF and provide feedback. |
| Feedback form (Appendix E) | A four-page feedback form was used to allow community members to make a submission on the concept design and REF related to motorist and pedestrian safety, noise, environmental impacts, local traffic, heavy vehicles and freight traffic, community engagement, integration with the SAP and other areas. Hard copies were available at community information sessions and unstaffed displays. A digital version was available on the project website. |
| Newspaper advertisement (Appendices F and G) | Newspaper advertisements about the consultation period were published to announce the start of the consultation period and encourage community members to have their say. Quarter-page advertisements in the Parkes Champion Post appeared on 9, 12, 19, 23, 26 and 30 July and 2 and 6 August. Half-page advertisements in the Parkes Phoenix appeared on 5, 12, 19, 26 July and 2 August. A total of 13 advertisements were published. |
| Digital advertisement (Appendix H) | A digital advertisement was hosted on the Parkes Champion Post Online from 1 July to 8 August to inform the community of the concept design and REF display and direct them to the project website. The advertisement received 451 clicks through to the project website. |
| Radio advertisement (Appendix I) | Radio advertising was conducted within the consultation period from Tuesday 2 July to Thursday 8 August on two local radio stations. The purpose of the content was to inform the community about the consultation period, and to direct the community to the project website for more information and how they could provide feedback. A total of 92 advertisements were broadcast on 2PK and 92 advertisements were broadcast on RokFM. The advertisements were spread across the breakfast, morning, and evening drive periods to reach a wide audience. |
| Project website www.nswroads.work/parkesupgrade | The Transport for NSW website was used to provide information about the project, including a download-friendly version of the community update, FAQs, poster, postcard, media release, digital fly-through, 2019 Review of Environmental Factors and 2017 Community Consultation Report. Visitors to the website were able to sign up to receive future updates on the Parkes Bypass via email. The website received 2052 unique pageviews during the consultation period. |
| Media release (Appendix J) | A media release was distributed via the Transport for NSW media unit on Wednesday 26 June 2019 to announce the start of the consultation period. The release included comment from Deputy Prime Minister and Minister for Infrastructure, Transport and Regional Development Michael McCormack and NSW Minister for Regional Transport and Roads, Paul Toole, who were in Parkes to inspect designs for the project on that day. |

2. Consultation approach continued

| Tool/Activity | Description |
|---|---|
| Facebook NSW Roads (Appendix K) | <p>A total of 3 Facebook posts were shared on 22 July, 27 July and 2 August to encourage users to learn about the concept design and REF and share their feedback via the project website. A total of 808 click-throughs to the project website were generated from Facebook.</p> <p>An event titled 'Parkes Bypass info sessions' was created by the NSW Roads Facebook page on 16 July. The event page provided details of upcoming information sessions, and allowed Facebook users to register their interest in attending.</p> |
| Poster (Appendix L) | <p>A poster was produced communicating the design of the Parkes Bypass, the project objectives, details of community information sessions and how to contact the project team.</p> <p>Hard copies were displayed at the two unstaffed display locations and community information sessions. A soft copy was made available on the project website.</p> |
| Banners (Appendix M) | <p>Two banners were produced showing the concept design for the Parkes Bypass, and contact details for the project team. They were placed at Parkes Shire Council administration building and Service NSW Parkes during the consultation period.</p> |
| Fly-through | <p>Fly-through animations were produced and uploaded to the project website, social media and NSW Roads' YouTube profile. The fly-throughs displayed:</p> <ul style="list-style-type: none"> • Parkes Bypass – Concept Design North to South • Parkes Bypass – South to North • Newell Highway and Condobolin Road roundabout concept design • Shared pedestrian/cyclist bridge concept design • Bridge over rail and Hartigan Avenue concept design. <p>A shortened version of the Concept Design South to North fly-through was posted to the NSW Roads Facebook page on 22 July.</p> |
| Stakeholder briefings | <p>Briefings were provided to two key stakeholders. A briefing was provided to Parkes Christian School to introduce the project and discuss access changes to the school. Parkes Chamber of Commerce were briefed on 10 July regarding progress to date and an update on design changes, and invited to share feedback.</p> |
| Stakeholder meetings | <p>A total of 33 meetings were held with property owners during the consultation period to discuss the concept design and REF, particularly in relation to acquisition and potential noise and access impacts.</p> |
| REF copies | <p>A total of seven copies of the REF and its appendices were printed and made available to view at unstaffed displays and during community information sessions.</p> |
| Unstaffed displays | <p>Hard copies of the Parkes Bypass REF and supporting documentation including a poster, postcards, FAQs and Community Updates were on display at two locations:</p> <ul style="list-style-type: none"> • Parkes Shire Council Administration Centre, 2 Cecil Street Parkes • Service NSW Parkes, 51-55 Currajong Street Parkes. |
| Information sessions | <p>Twelve information sessions were held at various locations in Parkes to allow the community to view the project documentation and meet with Transport for NSW project staff. These information sessions included:</p> <p>Clarinda Street (in front of Discount Dave's)</p> <ul style="list-style-type: none"> • Tuesday 2 July 2019, 10am – 1pm • Wednesday 10 July 2019, 10am – 12pm • Thursday 18 July 2019, 11am – 2pm • Monday 22 July 2019, 10am – 1pm • Wednesday 31 July 2019, 10am – 1pm • Thursday 8 August 2019, 11am – 2pm <p>Metro Plaza (near Woolworths)</p> <ul style="list-style-type: none"> • Tuesday 2 July 2019, 3pm – 6pm • Wednesday 10 July 2019, 1pm – 4pm • Thursday 18 July 2019, 5pm – 8pm • Monday 22 July 2019, 2pm – 5pm <p>Parkes Arbour (between Target and Coles)</p> <ul style="list-style-type: none"> • Wednesday 31 July 2019, 3pm – 6pm • Thursday 8 August 2019, 3pm – 6pm. |



Heavy traffic on the Newell Highway railway crossing in Parkes

3. Consultation summary

This section provides a summary of the outcomes of consultation activities, the issues raised, recommendations for future consultation and the next steps for the Parkes Bypass.

3.1 Overview

Transport for NSW received a total of 119 responses during the consultation period. Of these submissions, 117 were provided by community

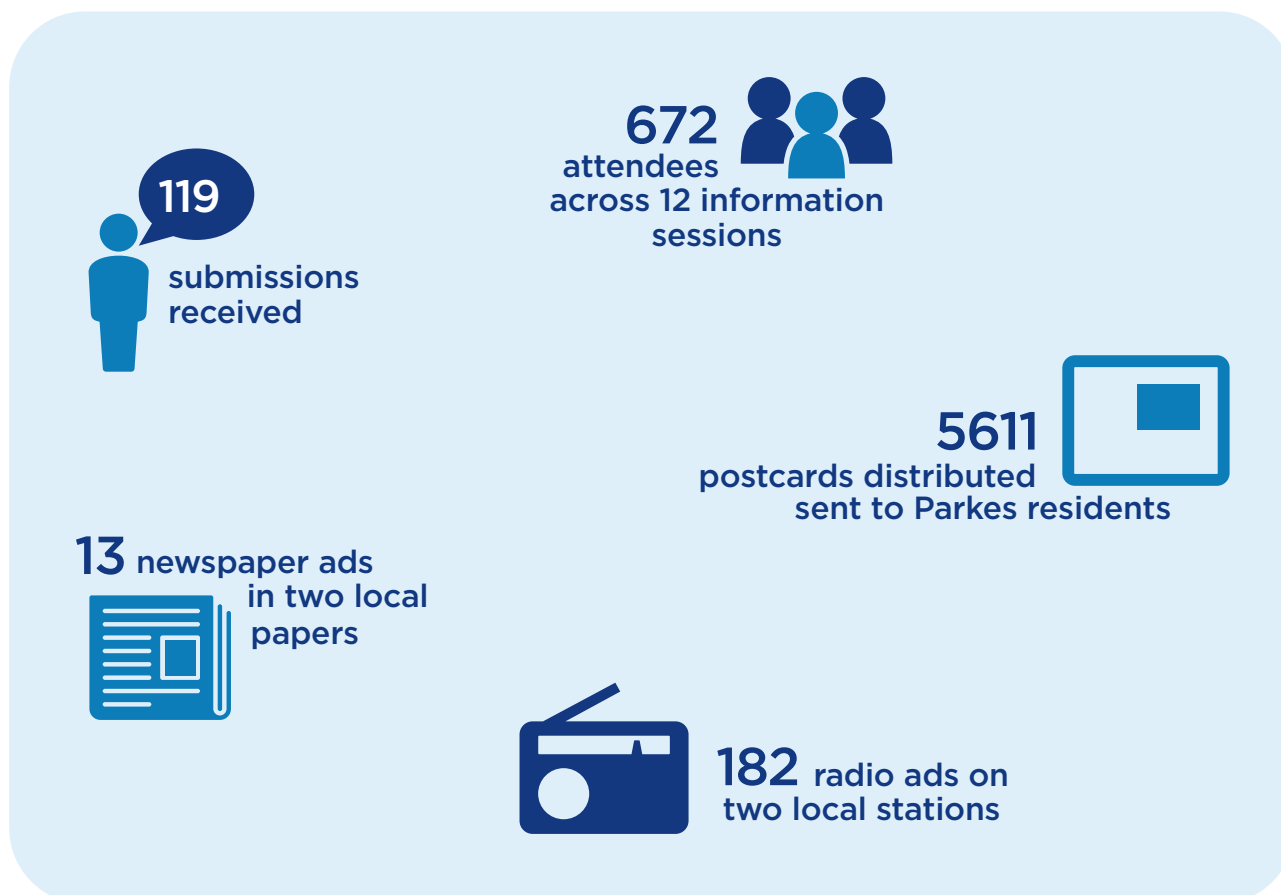
members, one was provided by Parkes Shire Council and one was provided by NSW Police. Across the information sessions, the project team engaged with approximately 672 attendees. A breakdown of this total is provided in Table 3.2.



The project team at Parkes Metro Plaza

Table 3.2 Breakdown of attendees at information sessions and stakeholder briefings

| Information session | Date and time | Approx. number of attendees |
|---------------------|-------------------------------------|-----------------------------|
| Clarinda Street | Tuesday 2 July 2019, 10am – 1pm | 35 |
| Metro Plaza | Tuesday 2 July 2019, 3pm – 6pm | 98 |
| Clarinda Street | Wednesday 10 July 2019, 10am – 12pm | 53 |
| Metro Plaza | Wednesday 10 July 2019, 1pm – 4pm | 91 |
| Clarinda Street | Thursday 18 July 2019, 11am – 2pm | 41 |
| Metro Plaza | Thursday 18 July 2019, 5pm – 8pm | 71 |
| Clarinda Street | Monday 22 July 2019, 10am – 1pm | 41 |
| Metro Plaza | Monday 22 July 2019, 2pm – 5pm | 74 |
| Clarinda Street | Wednesday 31 July 2019, 10am – 1pm | 28 |
| Parkes Arbour | Wednesday 31 July 2019, 3pm – 6pm | 46 |
| Clarinda Street | Thursday 8 August 2019, 11am – 2pm | 38 |
| Parkes Arbour | Thursday 8 August 2019, 3pm – 6pm | 56 |
| | | Total 672 |



3. Consultation summary continued

3.2 Overview of issues raised

A range of issues were raised by the community during the consultation period.

Of the 117 community submissions received by Transport for NSW:

- 15 per cent of submissions stated that they supported the overall proposal
- 9 per cent of submissions supported the idea of the proposal but objected to certain elements of the proposal
- 7 per cent of submissions objected to the overall proposal
- 68 per cent of submissions did not clearly state a position on the overall proposal, however most of these submissions discussed their support or concerns regarding particular elements of the proposal design.

Figure 3.1 Number of times key issue categories were raised by the community

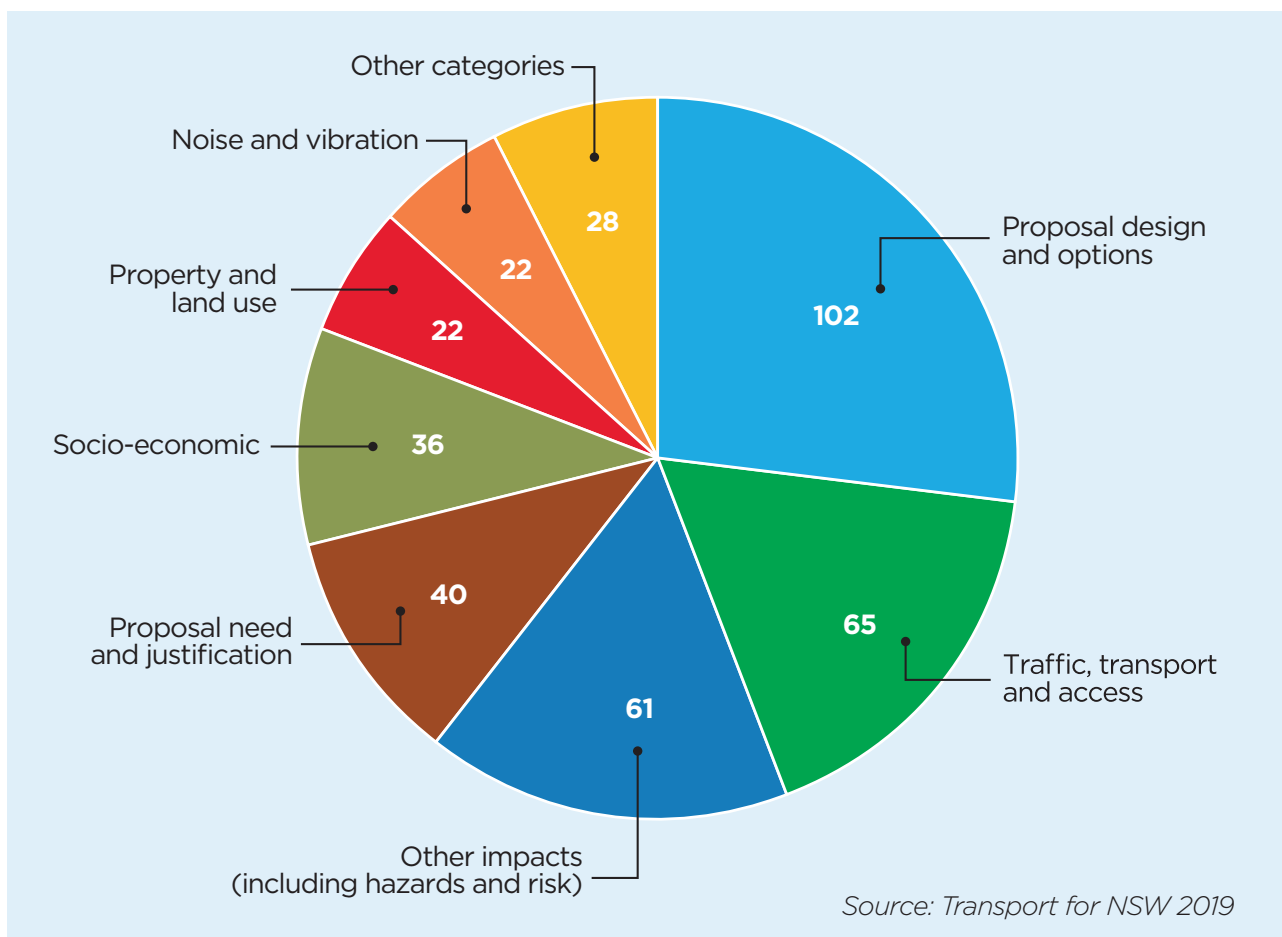


Figure 3.1 shows a summary of key issue categories raised by the community. Approximately 87 per cent of all community submissions raised issues related to the proposal design and options. This was particularly associated with the design of specific intersections including the shared pedestrian/

cycleway bridge between Victoria Street and Back Trundle Road and the roundabout at Condobolin Road. It is also noted that one of the community submissions was a petition with 406 signatures, which requested to adjust the design of the shared pedestrian/cycleway bridge to a light traffic overpass.

The design of these key intersections was also directly associated with concerns related to:

- Hazards and risks, particularly the safety of crossing the Condobolin Road roundabout
- Operational traffic, transport and access impacts, particularly for people travelling to Parkes Christian School and residences in Shallow Rush
- Operational noise and vibration impacts, particularly associated with braking, accelerating and decelerating at the approach to the Condobolin Road roundabout.

Another key issue raised in the community submissions was concerns regarding reduced passing trade or income for businesses in Parkes town centre during operation of the proposal.

A detailed Submissions Report has been prepared. The report examines individual submissions, extracts and collates the issues raised and provides Transport for NSW's response to these issues. It is available to view on the project website at nswroads.work/parkesupgrade.

3.3 Next steps

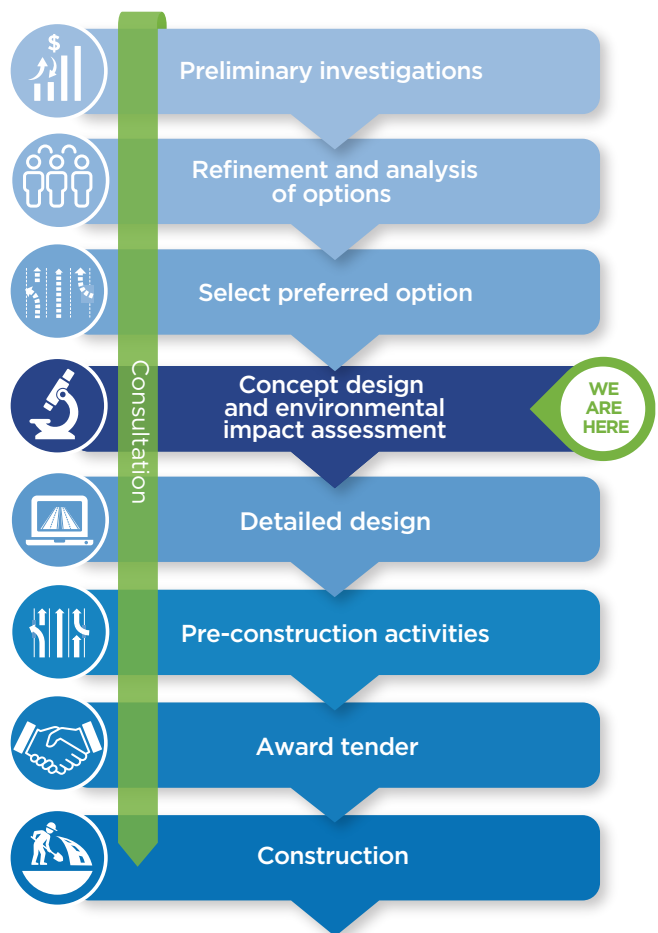
Feedback on the REF and concept design has been considered during the determination of the REF and finalisation of the Submissions Report. The determination of the REF is the confirmation that the project meets all the environmental requirements. The determined REF allows Transport for NSW to continue planning for the Parkes Bypass project, including starting the detailed design.

We will continue to keep the community informed during future stages of planning and delivery.

Expected timeframes for the Parkes Bypass project are:

- Community Consultation report and REF Submissions report released – early 2020
- Complete Detailed design – mid 2020
- Issue tender for construction – late 2020
- Site works commence – mid 2021
- Open to traffic – early 2024.

Figure 3.2 Consultation timeline



Appendices

Appendix A - Community Update



Australian Government

BUILDING OUR FUTURE



Roads and Maritime Services | July 2019

Parkes Bypass - Newell Highway upgrade

Community Update
Concept Design and Review of Environmental Factors



A PBS3a vehicle struggling to negotiate the existing Newell Highway through Parkes

The Australian and New South Wales Governments are funding the Parkes Bypass to remove heavy vehicles travelling through Parkes.

Project benefits



What's happening

Roads and Maritime Services has developed a concept design and environmental assessment of the proposed Parkes Bypass.

The preferred option is a 10.5 kilometre road to the west of Parkes which will bypass the town centre. The preferred option was decided following investigations and consultation with the community and stakeholders from December 2016 to February 2017.

The concept design and Review of Environmental Factors will be on display from **Monday 1 July to Friday 9 August**. Roads and Maritime encourages you to provide feedback during this time.

Project background

The Newell Highway is a major highway in NSW which connects Melbourne with Brisbane and supports the movement of local and interstate traffic, tourists, freight and livestock. The Newell Highway's current route through Parkes includes four 90-degree bends which are not safe for heavy vehicles.

The highway also crosses two major railway lines at level crossings which can cause Newell highway to close for up to 80 minutes each day. The proposed Parkes Bypass will provide safer journeys, easier freight access through Parkes and faster travel time for all road users.

Project objectives

The Parkes Bypass will improve:

- Freight efficiency and productivity
- Access for high productivity vehicles through Parkes
- Eliminate the travel delays caused by railway operations
- Travel times both North-South and East-West
- Amenity and safety for motorists and pedestrian on existing route through town
- Access to the Special Activation Precinct



Concept design of bridge over Hartigan Avenue and the Broken Hill and Parkes to Narromine rail lines



Improving freight productivity

The bypass is a dedicated route with minimal structural restrictions for heavy vehicles so they can travel through Parkes with greater ease.



Removing up to 1200 trucks from local streets

The bypass will divert heavy vehicles off the Newell Highway through Parkes and onto a new western route.



Improving traffic flow

A new bypass and road connections will open up the road network, creating smoother trips for all road users, especially during peak times.



Improving safety

A bypass route will minimise conflicts between road users.

Improve pedestrian safety



A shared cyclist and pedestrian bridge will allow non-motorists to access the intersection without coming into conflict with vehicles.



Save travel time

A new bridge over the railway line on Hartigan Avenue will minimise current delays to traffic by as much as 10 minutes North South.



Improving the appeal of Parkes town

Less heavy vehicles travelling through Parkes will keep local roads for lighter vehicles.



Better and more reliable trips for people, businesses and freight

What's happening

Roads and Maritime Services has developed a concept design and environmental assessment of the proposed Parkes Bypass.

The preferred option is a 10.5 kilometre road to the west of Parkes which will bypass the town centre. The preferred option was decided following investigations and consultation with the community and stakeholders from December 2016 to February 2017.

The concept design and Review of Environmental Factors will be on display from **Monday 1 July to Friday 9 August**. Roads and Maritime encourages you to provide feedback during this time.

Project objectives

The Parkes Bypass will improve:

- Freight efficiency and productivity
- Access for high productivity vehicles through Parkes
- Eliminate the travel delays caused by railway operations
- Travel times both North-South and East-West
- Amenity and safety for motorists and pedestrian on existing route through town
- Access to the Special Activation Precinct

Project background

The Newell Highway is a major highway in NSW which connects Melbourne with Brisbane and supports the movement of local and interstate traffic, tourists, freight and livestock. The Newell Highway's current route through Parkes includes four 90-degree bends which are not safe for heavy vehicles.

The highway also crosses two major railway lines at level crossings which can cause Newell highway to close for up to 80 minutes each day. The proposed Parkes Bypass will provide safer journeys, easier freight access through Parkes and faster travel time for all road users.



Concept design of bridge over Hartigan Avenue and the Broken Hill and Parkes to Narromine rail lines

Concept Design - Parkes Bypass



Improving freight productivity

The bypass is a dedicated route with minimal structural restrictions for heavy vehicles so they can travel through Parkes with greater ease.



Removing up to 1200 trucks from local streets

The bypass will divert heavy vehicles off the Newell Highway through Parkes and onto a new western route.



Improving traffic flow

A new bypass and road connections will open up the road network, creating smoother trips for all road users, especially during peak times.



Improving safety

A bypass route will minimise conflicts between road users.

Improve pedestrian safety



A shared cyclist and pedestrian bridge will allow non-motorists to access the intersection without coming into conflict with vehicles.



Save travel time

A new bridge over the railway line on Hartigan Avenue will minimise current delays to traffic by as much as 10 minutes North South.



Improving the appeal of Parkes town

Less heavy vehicles travelling through Parkes will keep local roads for lighter vehicles.

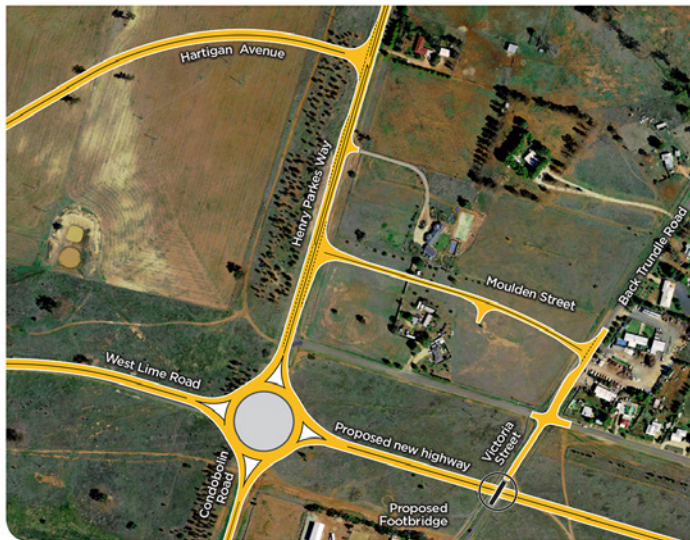
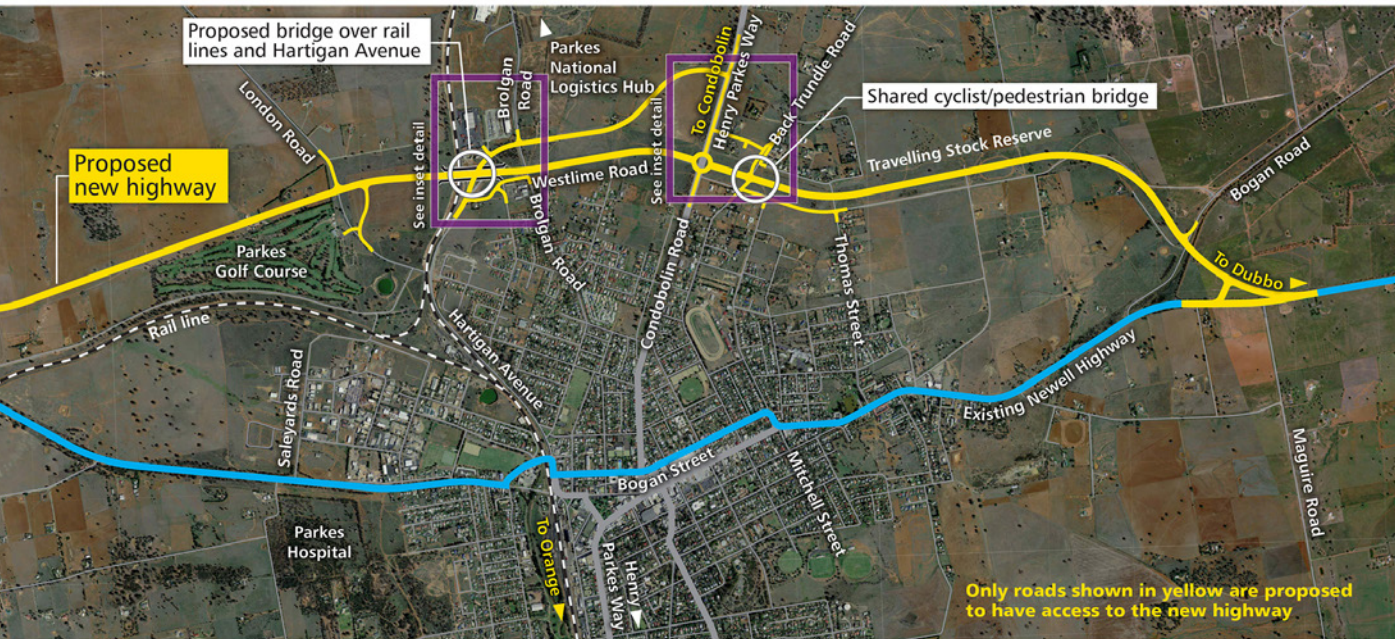


Better and more reliable trips

for people, businesses and freight



Bridge over Hartigan Avenue and the Broken Hill and Parkes to Narromine rail lines



Four-way roundabout at Condobolin Road

Project features

A new 10.5 kilometre bypass route of Parkes would include:

- A two-lane road (one lane in each direction) to the west of Parkes
- New intersections and a four-way roundabout at Condobolin Road
- A bridge over the Broken Hill and Parkes to Narromine rail lines at Hartigan Avenue
- A shared pedestrian and cycleway bridge connecting Victoria Street and Back Trundle Road
- Facilitate future connectivity to the Parkes Special activation Precinct (SAP)
- An extension of Hartigan Avenue to connect Brolgan Road and Condobolin Road
- Changes to local road access and new connections to the bypass.



The bridge over the Broken Hill and Parkes to Narromine rail lines at Hartigan Avenue will accommodate double stacked container trains

Parkes bypass



You are invited to have your say on the Concept Design and Review of Environmental Factors (REF) for the Parkes Bypass. The Concept Design and REF will be on display from Monday 1st July to Friday 9th August.

Visit us online

Have your say and stay informed by visiting the project website where you can also:

- View a **360 degree flyover** of the project concept design
- View and download all **project documents**
- Sign up to our **project mailing list** to receive project updates.

Unstaffed display locations

The concept design and Review of Environmental Factors will be on display from **Monday 1 July to Friday 9 August** at the following locations:

Parkes Shire Council Administration Centre
2 Cecile Street, Parkes

Service NSW, Parkes
51-55 Currajong Street, Parkes

Drop in sessions

The project team will be available to discuss the concept design and Review of Environmental Factors at the following locations:

Clarinda Street (in front of Discount Dave's)

- Tuesday 2 July 2019, 10am - 1pm
- Wednesday 10 July 2019, 10am - 12pm
- Thursday 18 July 2019, 11am - 2pm
- Monday 22 July 2019, 10am - 1pm
- Wednesday 31 July 2019, 10am - 1pm
- Thursday 08 August 2019, 11am - 2pm

Metro Plaza (near Woolworths)

- Tuesday 2 July 2019, 3pm - 6pm
- Wednesday 10 July 2019, 1pm - 4pm
- Thursday 18 July 2019, 5pm - 8pm
- Monday 22 July 2019, 2pm - 5pm

Parkes Arbour (between Target and Coles)

- Wednesday 31 July 2019, 3pm - 6pm
- Thursday 8 August 2019, 3pm - 6pm

View the Parkes Bypass fly-over and 360 degree animation



Review of Environmental Factors

Roads and Maritime Services has carried out an environmental assessment on the proposed Parkes Bypass. The Review of Environmental Factors (REF) assesses the potential social and environmental impacts of the project and identifies ways to minimise these impacts. The REF investigates the following key issues for the project:

- Traffic and transport**
- Socio-economic**
- Noise and vibration**
- Landscape character and visual**
- Biodiversity**
- Other impacts**

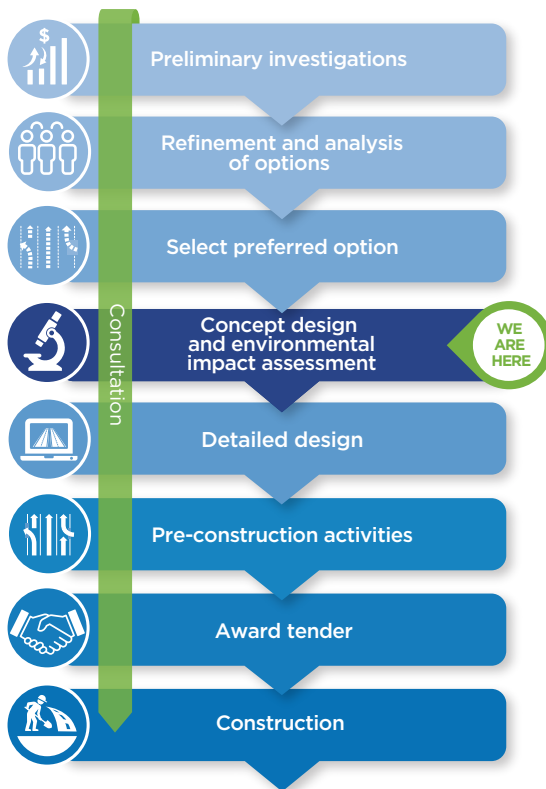
Further information on the documents within the REF are available on the project website.



Concept design of four-way roundabout at Condobolin Road

Next steps?

Roads and Maritime Services will continue to engage with the community and stakeholders throughout the planning and delivery of the Parkes Bypass. Following an approval process, construction is scheduled to start in May 2021 and take about three years to complete. This will be subject to funding, weather and access considerations.



Newell Highway at the Welcome railway crossing south of Parkes

Contact us:

To provide your feedback or for more information, please contact our team on:

- ☎ 1800 741 636 (option 4)
- @ newell.upgrade@rms.nsw.gov.au
- 🌐 rms.work/parkesupgrade
- ✉ PO Box 334, Parkes NSW 2870



If you need help understanding the information, please contact the Translating and Interpreting Service on **131 450** and ask them to call us on **1800 741 636 (option 4)**



June 2019
RMS. 19.1081

Privacy: Roads and Maritime Services is subject to the *Privacy and Personal Information Protection Act 1998* ("PIIP Act") which requires that we comply with the Information Privacy Principles set out in the PIIP Act. All information in correspondence is collected for the sole purpose of assisting in the assessment of this proposal/ delivering this project. The information received, including names and addresses of respondents, may be published in subsequent documents unless a clear indication is given in the correspondence that all or part of that information is not to be published. Otherwise RMS will only disclose your personal information, without your consent, if authorised by the law. Your personal information will be held by RMS at 55 Currajong Street, Parkes NSW 2870. You have the right to access and correct the information if you believe that it is incorrect.

Appendix B - Postcard

Australian Government
BUILDING OUR FUTURE

NSW GOVERNMENT

Parkes Bypass - Newell Highway upgrade

Concept Design and Review of Environmental Factors

A PBS3a vehicle struggling to negotiate the existing Newell Highway through Parkes

Better and more reliable trips
for people, businesses and freight

Improving freight productivity

Removing up to 1200 trucks
from local streets

Improve motorist and pedestrian safety

Have your say

You are invited to have your say on the Concept Design and Review of Environmental Factors (REF) for the Parkes Bypass. The Concept Design and REF will be on display from Monday 1st July to Friday 9th August.

View the Concept Design and REF at:

- Parkes Shire Council Administration Centre
- Service NSW, Parkes

Written submissions can be sent to Roads and Maritime via email or post.

Drop in sessions

The project team will be available to discuss the concept design and Review of Environmental Factors at the following locations:

Clarinda Street (in front of Discount Dave's)
Tuesday 2 July 2019, 10am - 1pm

Metro Plaza (near Woolworths)
Tuesday 2 July 2019, 3pm - 6pm
Wednesday 10 July 2019, 1pm - 4pm
Thursday 18 July 2019, 5pm - 8pm
Monday 22 July 2019, 2pm - 5pm

Parkes Arbour (between Target and Coles)
Wednesday 31 July 2019, 3pm - 6pm
Thursday 8 August 2019, 3pm - 6pm

For more information about the times and dates of these sessions, go to www.rms.work/parkesupgrade

Contact us:

To provide your feedback or for more information, please contact our team on:

- ☎ 1800 741 636 (option 4)
- @ newell.upgrade@rms.nsw.gov.au
- 📧 rms.work/parkesupgrade
- ✉ PO Box 334, Parkes NSW 2870

LEGEND

- New highway
- Existing highway
- Railway
- Bridge

Only roads shown in yellow are proposed to have access to the new highway

RMS 18J079

Appendix C - FAQs



Parkes Bypass FAQs

Project background

Why is the project needed?

The Newell Highway supports local traffic, tourists, farmers and heavy vehicles transporting freight between Queensland and Victoria. The highway through Parkes is constrained by level crossings, four 90-degree bends in the road, narrow road and intersection widths and the CBD has high pedestrian traffic.

What will the Parkes bypass achieve?

The bypass will provide an alternative route west of the Newell Highway to allow motorists, particularly heavy vehicles, to travel around rather than through Parkes.

How many trucks will the bypass remove from the main street of Parkes?

The bypass would remove up to 1200 trucks per day from local streets and improve safety for motorists.

What will be the travel times saving be once the bypass is completed?

The bypass will increase the reliability of trips for motorists and reduce travel time by up to 10 minutes for through traffic using the Newell Highway, compared to the existing route through town.

How long is the bypass as detailed in the concept design?

The bypass will be 10.5 kilometres long and extend along the western outskirts of the city.

Where is the planning for the Parkes bypass up to?

We have developed a concept design and are inviting feedback on the design and the Review of Environmental Factors (REF).

All feedback received is important and will help shape the final design. After the REF is determined, the project will move into development of the detailed design.

What does the Review of Environmental Factors (REF) contain?

The REF has been carried out to determine the potential environmental and social impacts of the Parkes Bypass project.

A REF is used to assess the potential environmental impacts of the proposed project and identify ways to manage and mitigate these impacts including traffic, noise, flooding, water quality and biodiversity.

For more information, you can view the Review of Environmental Factors document by visiting www.rms.work/parkesupgrade

What will the new bypass road involve?

The Parkes bypass design involves:

- One lane of traffic in each direction, connecting to the existing Newell Highway to the south of Barkers Road, re-joining near Maguire Road to the north of the town.
- Four key intersections comprising:
 - T-intersections where the new bypass connects to the existing highway near Barkers Road (south) and Maguire Road (north)
 - a staggered T-intersection at London Road
 - a four-way roundabout at Condobolin Road
- A bridge across the Broken Hill and Parkes to Narromine rail lines and Hartigan Avenue and a shared pedestrian/ cycleway bridge across the Parkes Bypass connecting Victoria Street and Back Trundle Road
- An extension of Hartigan Avenue that would connect to Brolgan Road (west of the bypass) and Condobolin Road
- Changes to local roads to tie in with the new bypass.

What are the project objectives?

Upgrade of the Newell Highway at Parkes aims to improve:

- Freight efficiency and productivity
- Access for high productivity vehicles (double road trains, B-triples, AB triples) through Parkes as well as providing a link to existing road train routes to the west
- Safety of the railway level crossings
- Travel times at Forbes Road level crossing (near Hartigan Avenue) and the Welcome level crossing
- Pedestrian access in Parkes particularly across Bogan Street
- Access to Parkes National Logistics Hub
- The attractiveness of Parkes as a place to live and work
- East-west traffic flow in Parkes, particularly Henry Parkes Way to Orange and Condobolin.

What percentage of traffic is expected to be diverted onto the bypass?

Modelling shows approximately 74 per cent of freight traffic which currently travels through the centre of Parkes is expected to use the bypass. About 60 per cent of light vehicle traffic is expected to continue travelling through Parkes once the bypass has been opened to traffic.

Is there funding for the project?

The NSW Government has invested \$13.4 million toward detailed planning for the upgrade of the Newell Highway at Parkes as part of the \$500 million Newell Highway upgrade program.

The Federal Government has recently committed \$100M for the Construction of the road, as Part of the Roads of Strategic Importance initiative (ROSI) Toowoomba to Seymour corridor \$510 million program.

What is the expected timeline for the bypass project?

Construction on the Parkes bypass is expected to take up to three years to complete, subject to weather and access considerations.

Does the proposed bypass reflect a previous Parkes Shire Council proposal for a western ring road?

Roads and Maritime Services started planning for the potential upgrade of the Newell Highway at Parkes by reviewing options for new and existing routes. The planning has built on a previous Parkes Shire Council proposal for a Western ring road.

Will pedestrians and cyclists benefit from the bypass?

A benefit for pedestrians and cyclists due to the provision of a dedicated off-road, shared path pedestrian and cyclist bridge along Victoria Street and Back Trundle Road to access the Parkes Christian School.

Economic Impact

What consultation has been carried out with the local business community?

Community feedback was invited on the proposed 10.5 kilometre bypass from December 2016 to February 2017 to inform the REF (Review of Environmental Factors) and concept design.

Targeted business surveys were also carried out between 17 July 2017 and 4 August 2017 with 105 local businesses throughout Parkes, selected based on their likely reliance on passing-trade, such as restaurants and cafés.

The surveys were used to understand:

- The types of businesses in Parkes, the type of customers they receive and perceived degree to which businesses rely on passing trade
- Potential seasonal variations in business and the factors that impact daily trade
- The perceived impact that the proposal would have on business and trade in Parkes
- Potential strategies to minimise the proposal's impact on local business.

Local residents, business owners and road users are encouraged to attend the upcoming information sessions to find out more about the project and speak with members of the project team.

How is passing trade being encouraged to stop in Parkes?

Roads and Maritime Services is working with Parkes Shire Council to create designs for town gateways or town entrance statements.

In addition this project will make use of the Bypassed Town signage which is a NSW Government initiative which aims to encourage travellers to stop and visit bypassed towns in rural and regional NSW. The signs are a first for NSW and feature colour images depicting the features of bypassed towns.

The signs will form part of the NSW wayfinding signage and more information about the signage initiative can be found at www.rms.nsw.gov.au/projects/bypasses/signage-initiative.html

Community

What consultation has Roads and Maritime Services had with the Parkes community on the proposed bypass?

In December 2016, Roads and Maritime Services issued the proposed bypass design and invited the community and other stakeholders to provide comments by:

- Asking people to respond to an online survey
- Running nine community drop-in sessions
- Undertaking key stakeholder meetings
- Holding face-to-face meetings with affected residents, key businesses, and property landowners.

Through this process, Roads and Maritime Services: Received 220 responses to the online survey

Had over 800 people attend the nine community drop-in sessions.

What were some of the key community concerns?

Key in the community and stakeholder's responses, were concerns about the potential loss of passing trade and/or businesses choosing to relocate or not locate themselves in Parkes once the bypass was built.

How are freight movements predicted to change over time?

The total freight task on the Melbourne to Brisbane corridor is estimated to increase from the 4.5 million tonnes recorded in 2007 to 11.5 million tonnes by 2029. This equates to 32 per cent growth for light vehicles and 38.4 per cent growth for heavy vehicles from 2017 to 2033.

Will the bypass connect to the logistics hub and proposed inland rail?

The bypass will facilitate connectivity to the Parkes National Logistics Hub and the Inland Rail and also improve amenity and pedestrian access in Parkes near the existing Newell Highway alignment

Where exactly will the bypass extend to and from?

The upgrade would involve relocating the highway about two kilometres west, between Maguire Road to the north and Barkers Road to the south - a total length of 10.5 kilometres.

How can community members provide feedback to the concept design and REF?

The concept design and REF will be on display from 1 July to 9 August. There are many options to provide your feedback, visit rms.work/parkesupgrade or call in and chat with the project at one of the drop in sessions.

The concept design provides details of the bypass and new intersections, the road design and bridges. A range of environmental assessments were undertaken to investigate the potential environmental impacts of the project and to identify ways to manage them. These assessments have been collated and released as the Review of Environmental Factors (REF).

Submissions can be made by emailing newell.upgrade@rms.nsw.gov.au or mailing to PO Box 334 PARKES NSW 2870. All comments will be addressed in the submissions report and used to prepare the final project design.

What is the largest heavy vehicle which can currently travel through Parkes?

Largest currently approved vehicle is 26 metre B-Double, due to constraints by level crossings, four existing 90-degree bends along the highway, narrow road widths and potentially dangerous interactions with pedestrians and local traffic.

When will access be given for Type 1 road trains and PBS level 3 vehicles?

Roads and Maritime Services is committed to a short term solution to enable Type 1 road trains and PBS level 3 vehicles to move through Hartigan Ave and Mitchell Street in Parkes.

We are also working with ARTC to upgrade the rail level crossings on the Newell highway at Welcome and Tichborne to allow access for these vehicles.

What will be the next step in the process to deliver the bypass?

Community feedback as well as feedback and ongoing engagement with Parkes Council, Department of Planning and Environment, Inland rail and other stakeholders will contribute to the final detailed design.

Noise

How will noise be assessed and managed?

The NSW Environment Protection Authority (EPA) Road Noise Policy states what traffic noise levels at houses should be following the upgrade. We have provided a diagram on the next page to explain this approach. The policies and guidelines are available to view online at epa.nsw.gov.au/noise and rms.nsw.gov.au (go to the environment page).

How is noise measured?

The measurement unit for sound and noise is decibels (dB). A sound level in dB represents the sound pressure level, which is the amount of sound a listener receives.

As sound levels near a road may vary, such as when a truck is driving past, the LAeq (Equivalent Continuous Level) measurement is used to show an average noise level over a given period.

rms.nsw.gov.au

Target noise levels

During the design and noise assessment process we generally seek to achieve the following noise levels at residences:

- 55 decibels during the day and 50 decibels at night for new freeways or main roads in the new areas
- 60 decibels during the day and 55 decibels at night for upgrades of existing roads
- Other noise sensitive receivers such as schools, hospitals, nursing homes and places of worship are also considered.

How do I know if my property is going to be affected by noise?

As part of the Review of Environmental Factors, Roads and Maritime Services built a 3D noise model of the town of Parkes and measured a pre bypass scenario (the model was calibrated with actual readings using noise loggers) to give an indication of the current noise levels. We then introduced the Parkes bypass to the model and predicted the noise in that scenario.

A noise mound is proposed to shield the residences of Moulden Street, but elsewhere the properties affected are considered in isolation.

In the bypass scenario model including the proposed noise mound, 27 properties experience an increase in background noise between 2DB and up to a maximum of 12DB. A number of properties also experience an increase of between 0DB -2DB.

The 27 properties have ALL been personally contacted by Roads and Maritime Services and may be eligible for compensation.

The properties that experience an increase of between 0DB -2DB will not be eligible for compensation as per NSW Environment Protection Authority (EPA) Road Noise Policy.

I would like to know if my property is affected?

If you believe your property may experience an increase in noise as a result of the bypass, but haven't been contacted by Roads and Maritime Services, please see staff at the displays or contact Roads and Maritime Services who will be only too happy to sit down with you and discuss your individual circumstances.

What if I am impacted by noise?

Eligibility and level of treatment is based on the operational noise model and relevant NSW guidelines to ensure that treatment is provided equitably.

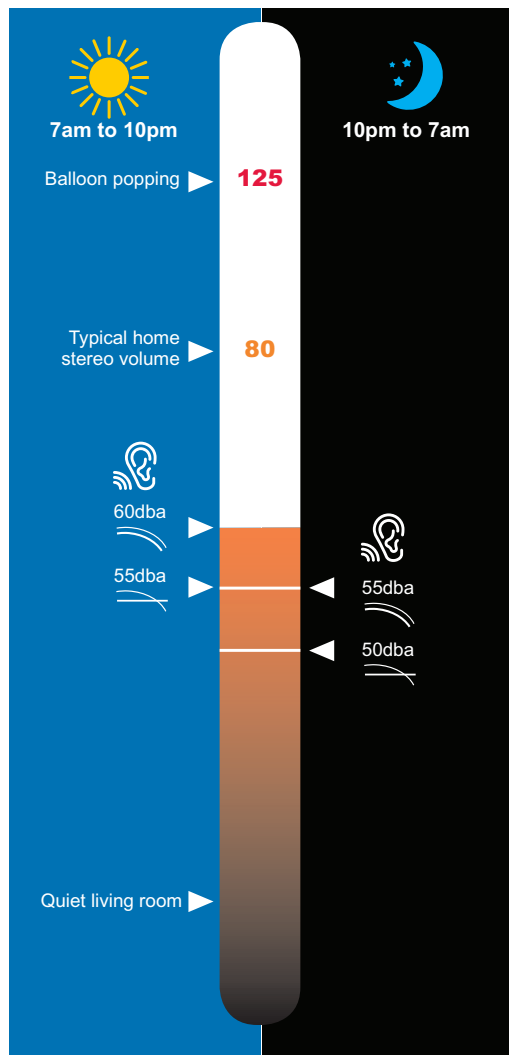
Eligible properties will receive a specific package of treatments for their home depending on the expected noise impacts and existing features of the property. The treatments may include:




- Upgrading windows and doors
- Sealing wall vents and upgrading window and door seals
- Installing ventilation such as fans or air conditioning (split system or ducted) to maintain the flow of fresh air when windows and doors are closed.
- Every property will receive a unique package of treatments based on the expected noise impacts and the construction and condition of the residential dwelling. If a property is not eligible for at-house noise treatment, this means that the expected operational noise impacts are within the target noise levels.

3

What if I am impacted by noise from existing roads?

The Noise Review only recommends noise mitigation measures for the road upgrades and does not consider noise on existing roads, however residences affected by additional traffic on existing local roads due to the upgrade are considered.



-  The NSW Environmental Protection Authority's Flood Noise Policy 2011. Target noise levels for the project as at 1 metre from the building facade.
-  Upgrades of existing roads (includes duplication)
-  New freeways or main roads (includes Bypass)

Does the bypass integrate with the proposed Parkes Special Activation Precinct (SAP)?

Yes, numerous joint planning workshops have been held between the two departments over the last 12 months and changes have been made so that the bypass is built to adequately cater for future demand and needs of the Special Activation Precinct (SAP). Our documents have their design incorporated, and their documents have our design incorporated.

Does the Parkes Bypass integrate with ARTC's Inland Rail?

Yes, the design of the bypass includes a bridge over the inland rail line that allows for double stacked trains to pass underneath.

The intersections have been designed for freight traffic to access intermodal facilities within the SAP.





How will traffic be impacted during construction?

The majority of construction will occur along the project corridor to minimise impacts on the local road network. Temporary detours and lane closures may be required at times. The community will be notified in advance of any traffic changes.

Construction activities and vehicle movements during peak holiday periods will be planned to minimise impacts on the local road network. Traffic changes will be communicated to motorists through electronic message signs and livetraffic.com

How can I find out more?

Roads and Maritime Services is committed to keeping the community informed. For more information on the Parkes Bypass project:

-  www.rms.work/parkesupgrade
-  newell.upgrade@rms.nsw.gov.au
-  1800 741 636 (Option 4)
-  PO Box 334, Parkes NSW 2870

Appendix D - Email to stakeholders

Dear all

Yesterday the Deputy Prime Minister, Nationals' Leader and Minister for Infrastructure, Transport and Regional Development Michael McCormack and NSW Minister for Regional Transport and Roads Paul Toole were in Parkes to announce the display of the Parkes Bypass REF and Concept Design.

As we have previously advised Roads and Maritime Services proposes to build a new 10.5 kilometre bypass on the western outskirts of Parkes to reduce travel time, improve freight productivity and efficiency, pedestrian access through Parkes and traffic flow.

The concept design and REF will be on online and displayed at Parkes Shire Council Administration Centre and Service NSW Parkes from Monday 1 July to Friday 9 August 2019.

The project team will be available to discuss the concept design and Review of Environmental Factors at the following locations:

Clarinda Street, Parkes (in front of Discount Dave's)

- Tuesday 2 July 2019, 10-1pm
- Wednesday 10 July 2019, 10-12pm
- Thursday 18 July 2019, 11-2pm
- Monday 22 July 2019, 10-12pm
- Wednesday 31 July 2019, 10-1pm
- Thursday 8 August 2019, 11-2pm

Metro Plaza are as follows:-

- Tuesday 2 July 2019, 3pm - 6pm
- Wednesday 10 July 2019, 1pm - 4pm
- Thursday 18 July 2019, 5pm - 8pm
- Monday 22 July 2019, 2pm - 5pm

Parkes Arbour (between Coles and Target):-

- Wednesday 31 July 2019, 3pm - 6pm
- Thursday 8 August 2019, 3pm - 6pm

Submissions can be made by emailing newell.upgrade@rms.nsw.gov.au or mailing to PO Box 334 PARKES NSW 2870. All comments will be addressed in the submissions report and be used to prepare the final project design.

If you would like to contact us to discuss the project in more detail please call 1800 741 636 (option 4).

Kind Regards

Rachel Rice & Ben Orford
Parkes Bypass Project Team
1800 741 636 (option 4)

Appendix E - Feedback form

The NSW Government is investing in an upgrade of the Newell Highway at Parkes. Roads and Maritime Services proposes to build a new 10.5 kilometre bypass on the western outskirts of Parkes to reduce travel time, improve freight productivity and efficiency, pedestrian access through Parkes and traffic flow.

Roads and Maritime Services is delivering this work as part of the \$500 million Newell Highway upgrade program to support the interstate freight industry, provide economic growth, and improve access and safety along a vital transport corridor in New South Wales

Roads and Maritime Services has developed a concept design and environmental assessment of the proposed Parkes Bypass. The concept design and Review of Environmental Factors (REF) will be on display from **Monday 1 July to Friday 9 August 2019**.

Roads and Maritime is inviting feedback during the REF display. After community feedback has been received, a submissions report will be prepared that will summarise the comments made and Roads and Maritime's responses.

We want to know your thoughts on the New Dubbo Bridge concept design and REF.

Have your say by filling out the short survey below.

Your contact details (Providing this information is optional)

Name:

Organisation/business (if applicable):

Address:

Email:

Contact phone number:

What is your preferred way to receive information about this project? You can choose more than one.

Parkes Bypass website

Email

Letterbox drop

SMS

Community information sessions

Social Media

E-newsletter

Demographic information.

The following questions will help us gain an understanding of how to improve our consultation in the future. (Providing this information is optional)

How old are you?

Under 17

30 - 39

50 - 59

17 - 29

40 - 49

60+

To help us identify what matters most to you, we would like your views on a number of topics in relation to the Parkes Bypass. You can also make comments about any topics that interest you, even if they are not listed below.

1. Motorist and pedestrian safety

2. Noise

3. Environmental impacts

4. Local traffic

5. Heavy vehicles and freight traffic

Appendices continued

6. Community engagement

7. Integration with the Special Activation Precinct (SAP)

7. Other

8. Do you have any other general comments on the proposed New Dubbo Bridge?

Would you like to be added to our mailing list?

Yes

No

If so, and you would like us to contact you on details other than those you provided on Page 1, please provide alternative contact details below:

Email address:

Postal address:

Further information and feedback

Email: newell.upgrade@rms.nsw.gov.au

Phone: 1800 742 636 (option 4)

Web: rms.work/parkesupgrade

Mail: PO Box 334, Parkes NSW 2870

Appendix F - Newspaper advertisement in Parkes Champion Post

STUDENT OF THE WEEK



Isobelle Moss.

NAME: Isobelle Moss
Year: 7
School: Parkes Christian School
Teacher: Miss Hollie Oates
Teacher Comments: Isobelle is very helpful and reliable in all areas.
Best thing about High School? Tech and getting to take your chromebook home.
What would you like to do when you grow up? I would like to be a Veterinarian.

STUDENT OF THE WEEK



Molly Clohesy.

AGE: 8 years
School: Parkes Public.
Class: 3 Blue.
Teacher: Miss Wallace
Teacher comments: Molly is an exuberant, thoughtful and happy student. Enjoys learning new things. Molly is always helpful.
Favourite activities: Playing the piano and with my friends, reading, computer games.
What job interests you? Being a professional Gamer.

CAPTAIN KOALA'S KIDS CLUB



Captain Koala.

THIS week's birthdays...
Tuesday, July 9: Faith Clarke (12), Caylan Neilsen (11), Emily Wild (6). **Wednesday, July 10:** Scarlett Peden (9). **Thursday, July 11:** Zahli Gillingham (8). **Friday, July 12:** Finlay Guess (6), Joel MacGregor (12). **Saturday, July 13:** Charlie Rix (7), Cameron Pfaff (9). **Monday, July 15:** Oliver Hunt (12).
Call into the office to pick up your voucher for a free large Domino's pizza!

Recognise a great Aussie

JANUARY 2020 will mark the 60th anniversary of the Australian of the Year Awards, honouring and celebrating great Australians from all walks of life.

You can help find the 2020 Australian of the Year, Senior Australian of the Year and Australia's Local Hero in this significant anniversary year, simply by nominating someone you admire at australianoftheyear.org.au by July 31, 2019.

The Australian of the Year

Awards provides everyone with the opportunity to recognise any Australian who makes them proud.

The Awards operate at two levels - State/Territory and national.

State and Territory selection committees select four nominees for each Award category, with one of these nominees being announced as the State/Territory Award recipient.

The National Australia Day Council Board select the Australians of the Year from

the group of 32 State and Territory recipients.

National Australia Day Council CEO Karlie Brand said everyone has their own idea of who could be Australian of the Year Award recipient but it is crucial to submit a formal nomination.

"We all know great people and know the stories of what they've done.

"Now it's time to nominate them and share their stories with all Australia," said Ms Brand.

"In the 60 year history of

the Australian of the Year Awards, we have recognised achievers from science, human rights, medicine, the arts, civic leadership, music, community, charity and philanthropy and sport.

"Who will the Awards recognise in 2020?"

"That's where the people of Australia have a key role to play - by nominating great people to be considered for the Awards.

"It only takes one nomination for an individual to be considered for the Awards,

but a nomination from a member of the public must be submitted for someone to be in the running.

"So be great and nominate someone today."

Nominations for the 2020 Australian of the Year Awards close midnight Wednesday July 31, 2019.

Nominating is simple and can be made online at australianoftheyear.org.au

Sir Macfarlane Burnet OAM AK KBE, scientist was the country's first Australian of the Year.



FIRST: Sir Macfarlane Burnet OAM AK KBE was the first recipient.

Roads and Maritime Services

Parkes Bypass - Concept Design & Review of Environmental Factors (REF)

The community is invited to have its say on the concept design for the Newell Highway bypass at Parkes with the Review of Environmental Factors (REF) for the project now on display.

Roads and Maritime Services proposes to build a new 10.5 kilometre bypass on the western outskirts of Parkes to reduce travel time, improve freight productivity and efficiency, pedestrian access through Parkes and traffic flow.

"Roads and Maritime Services is delivering this work as part of the \$500 million Newell Highway upgrade program to support the interstate freight industry, provide economic growth, and improve access and safety along a vital transport corridor in New South Wales.

The concept design for the proposed route and environmental assessment documents will be on display from Monday 1 July to Friday 9 August 2019.

Roads and Maritime Services is committed to consulting with the community and is seeking your feedback on the display documents. A number of information sessions will take place in Parkes where you can meet with the project team to discuss the concept design and environmental assessment.

Drop-in sessions
 The project team will be available to discuss the concept design and Review of Environmental Factors at the following locations:

Clarinda Street (in front of Discount Dave's)

- Tuesday 2 July, 10am - 1pm
- Wednesday 10 July, 10am - 12pm
- Thursday 18 July, 11am - 2pm
- Monday 22 July, 10am - 1pm
- Wednesday 31 July, 10am - 1pm
- Thursday 8 August, 11am - 2pm

Metro Plaza (near Woolworths)

- Tuesday 2 July, 3pm - 6pm
- Wednesday 10 July, 1pm - 4pm
- Thursday 18 July, 5pm - 8pm
- Monday 22 July, 2pm - 5pm

Parkes Arbour (between Target and Coles)

- Wednesday 31 July, 3pm - 6pm
- Thursday 8 August, 3pm - 6pm

Display locations
 The REF is on display at the following locations from July 1 to August 9 2019

Parkes Shire Council Administration Centre, 2 Cecile Street, Parkes Monday - Friday: 8.30am - 5pm
Service NSW, Parkes 51-55 Currajong Street, Parkes Monday - Friday: 9am - 5pm

Visit the project website to find out how to submit your feedback and view more information about the Parkes Bypass at www.rms.work/parkesupgrade

Have your say: Please provide feedback on the REF by Friday 9 August 2019, by sending your written comments to:
Email: newell.upgrade@rms.nsw.gov.au
Mail: Roads and Maritime Services, PO Box 334, Parkes NSW 2870

We've reduced prices to match the major supermarket chains

You won't pay more on 100s of everyday products

Find out more at iga.com.au/pricematch

COME IN STORE TO SEE FOR YOURSELF

Catalogue available online at www.iga.com or in your mailbox

FULLY EQUIPPED MECHANICAL WORKSHOP NOW OPEN!!!

Call in and see Brian Hogan & Staff for all:

- Tyres
- Brake repairs
- Batteries
- Log book servicing
- Wheel alignments
- Rego checks
- OBE Green Slip's
- Ute matting and more!
- Suspension checks

AFTER HOURS SERVICE
 0419 429 657

Follow us on

www.telescopetyres.com.au

Retail & Mechanical - 6862 4833

82 Clarinda Street PARKES

Commercial - 6862 2900

6-8 Clarke Street PARKES

COWRA - 6342 6095

1/42 Fishburn Street COWRA

Appendix G - Newspaper advertisement in Parkes Phoenix

Page 8 Friday 12 July 2019

Your free weekly guide to what's happening in and around Parkes...*shop locally first!*

PARKESSPORT

Winning Determination

The first minutes of the match between the Parkes Boars and the Dubbo Rhinos last Friday were intense, as both sides were desperate to get the first points on the board. Rhinos struck first with a penalty goal, with Parkes soon striking back replying off the boot of Sam Davis. Scott Chislett, Jarrod Westcott and Jason Lowe took their turn to punch into the Rhinos defence.

Withstanding the pressure in the first 20 minutes, Parkes worked their way down the field and Rusiate Lawanikula put their first points on the board. Sam Davis converted from out wide and as usual Toby Baigent threw himself into the game hammering the opposition in attack and defence. By half-time Parkes had their nose in front 10-8

Early in the second half, Josh van der Stock's repeated attacks broke through and made a 90 metre run to put Parkes on the attack. The Forwards stepped up and a series of pick and drives by Jason Lowe and Michael Thomas built pressure with Dan Ryan capitalising for the Boars and Sam Davis again adding the extras.

The Boars had their chances to add to the score but fumbled on the line twice.

Parkes thought they'd done enough, but

Rhinos struck back desperate for a win and scored to take them within four points. Parkes hung on to repel Rhinos for the last ten minutes to take out the much-needed win.

Best for Parkes - Toby Baigent, Rusi Lawanikula, Jarrod Westcott and Michael Thomas.



Weekend charity game against Narromine: Guernseys were auctioned off after the game and all proceeds went to the Red Cross.

PWBC Championships Coming Up

Two games of triples were played following the fog on Tuesday morning. Di Howell, Hilda McPherson and Kim Evans defeated Rose Howlett, Maureen Miller and Marilyn Rodgers. Ann Wright, Chris Curteis and Marja Iffland defeated Heather Harvey, Lea Orr and Lorraine Baker.

The draw for the Club Championship Triples to be played on or before 16th July as follows: Bye - Gwenda Carty, Cherie Frame, Rhona Went; Di Howell, Eileen Bradley, Rosemary Mitchell versus Marilyn Rodgers, Margaret Hawken, Marja Iffland; Maureen Miller, Maree Grant, Pat Cooney versus Chris Curteis, Jan McPhee, Kim Evans; Betsy Johnstone, Brenda Davies, Liz Byrne versus Heather Harvey, Audrey Jones, Joan Simpson. Umpire Gwenda Carty.

The Cannon-Merritt will be played at Parkes on Wednesday 31st July against Forbes, Teams as follows: 1) Lea Orr, Maureen Miller, Marilyn Rodgers. 2) Kay Craft, Heather Harvey, Marja Iffland. 3) Di Howell, Eileen Bradley, Jan McPhee. Manager Marja Iffland. If unable to play please contact Audrey Jones 6863 4242 or Di Howell 0409 643 004 ASAP.



Roads and Maritime Services

Parkes Bypass - Concept Design & Review of Environmental Factors (REF)

The community is invited to have its say on the concept design for the Newell Highway bypass at Parkes with the Review of Environmental Factors (REF) for the project now on display.

Roads and Maritime Services proposes to build a new 10.5 kilometre bypass on the western outskirts of Parkes to reduce travel time, improve freight productivity and efficiency, pedestrian access through Parkes and traffic flow.

"Roads and Maritime Services is delivering this work as part of the \$500 million Newell Highway upgrade program to support the interstate freight industry, provide economic growth, and improve access and safety along a vital transport corridor in New South Wales.

The concept design for the proposed route and environmental assessment documents will be on display from Monday 1 July to Friday 9 August 2019.

Roads and Maritime Services is committed to consulting with the community and is seeking your feedback on the display documents. A number of information sessions will take place in Parkes where you can meet with the project team to discuss the concept design and environmental assessment.

Drop-in sessions

The project team will be available to discuss the concept design and Review of Environmental Factors at the following locations:

Clarinda Street (in front of Discount Dave's)

- Tuesday 2 July, 10am - 1pm
- Wednesday 10 July, 10am - 12pm
- Thursday 18 July, 11am - 2pm
- Monday 22 July, 10am - 1pm
- Wednesday 31 July, 10am - 1pm
- Thursday 8 August, 11am - 2pm

Metro Plaza (near Woolworths)

- Tuesday 2 July, 3pm - 6pm
- Wednesday 10 July, 1pm - 4pm
- Thursday 18 July, 5pm - 8pm
- Monday 22 July, 2pm - 5pm

Parkes Arbour (between Target and Coles)

- Wednesday 31 July, 3pm - 6pm
- Thursday 8 August, 3pm - 6pm

Display locations

The REF is on display at the following locations from July 1 to August 9 2019

Parkes Shire Council Administration Centre, 2 Cecile Street, Parkes

Monday - Friday: 8.30am - 5pm

Service NSW, Parkes 51-55 Currajong Street, Parkes Monday - Friday: 9am - 5pm

Visit the project website to find out how to submit your feedback and view more information about the Parkes Bypass at www.rms.work/parkesupgrade

Have your say: Please provide feedback on the REF by **Friday 9 August 2019**, by sending your written comments to:

Email: newell.upgrade@rms.nsw.gov.au

Mail: Roads and Maritime Services, PO Box 334, Parkes NSW 2870

BLZ1-SE0100

Appendix H - Digital advertisement in Parkes Champion Post Online



Parkes Bypass

The concept design and the Review Environmental Factors for the Parkes bypass are now on display.

To find out more or to have your say visit rms.work/parkesupgrade



NSW
GOVERNMENT

Appendix I - Radio advertisement script

The New South Wales Government is delivering a new Parkes Bypass, to improve road safety and remove heavy vehicles from travelling through Parkes.

Roads and Maritime Services invites you to have your say on the concept design and review of environmental factors for the Parkes Bypass.

The concept design and review of environmental factors will be on display for public comment from Monday, July 1 until Friday, August 9.

To find out more and how to submit your feedback, visit the project website, r-m-s dot work slash Parkes upgrade.

Appendix J - Media release

Have your say on proposed Parkes bypass

Wednesday, 26 June 2019

The Parkes bypass is moving a step closer with the release of a concept design for community feedback.

Deputy Prime Minister, Nationals' Leader and Minister for Infrastructure, Transport and Regional Development Michael McCormack and NSW Minister for Regional Transport and Roads Paul Toole were in Parkes today to inspect designs for the project which has joint funding from the State and Federal governments.

"The Nationals in Government are working together to get this vital project done," Mr McCormack said.

"Locals have told me how important this bypass would be for truckies, farmers, small businesses and people driving through town and – together with the NSW Liberals and Nationals – I am excited to see the project progressing.

"The 10.5 kilometre bypass will improve road efficiency, pedestrian access through Parkes and traffic flow.

"We will see increased reliability of trips for motorists and reduced travel time of up to 10 minutes compared to the existing route through town.

It is proposed the new section of road will be built about two kilometres west of the Newell, between Maguire Road to the north and Barkers Road to the south.

"No matter where you live, we are investing to bust congestion, make country roads safer and help you get home sooner and safer," Mr McCormack said.

"The goal is to reduce congestion and delays caused by the two rail level crossings and four 90-degree bends which are difficult for heavy vehicles to safely navigate on the current route," Mr McCormack said.

Mr Toole said the bypass should remove more than 1000 trucks per day from local streets.

"This will support the interstate freight industry, provide economic growth, and improve access and safety along a vital NSW transport corridor," Mr Toole said.

"The total freight task on the Newell Highway corridor is estimated to increase from 4.5 million tonnes recorded in 2007 to 11.5 million tonnes by 2029."

Mr Toole said the bypass would also facilitate connectivity to the Parkes Special Activation Precinct and the Inland Rail.

"Studies show 39 per cent of all light vehicles and an estimated 74 per cent of all heavy vehicles are expected to use the bypass with the remainder continuing to use the existing Newell Highway," Mr Toole said.


Parkes Shire Mayor and Chair of the Newell Highway Task Force Cr Ken Keith OAM said this is a great outcome for the Parkes Shire community.

"With 1400 trucks passing through the Parkes CBD every day, the bypass will significantly improve the amenity of the Parkes CBD, deliver greater freight efficiencies and productivity, as well as help build a safer road network for all users," Cr Keith said. "I encourage our community to provide feedback on the revised Concept Design while it's on public display in the coming months."

Local residents, business owners and road users are encouraged to attend the upcoming information sessions to find out more about the project and speak with members of the project team.

The concept design and Review of Environmental Factors will be on display online at Parkes Bypass at the Parkes Shire Council Administration Centre and Service NSW Parkes from Monday 1 July to Friday 9 August 2019.

Appendix K - Facebook posts



AUG 8 Parkes Bypass Info Sessions
Public · Hosted by NSW Roads

★ Interested

3 Dates · Jul 18 - Aug 8
Event ended about 4 months ago

📍 Parkes, New South Wales [Show Map](#)

🗨 Hosted by NSW Roads [Message Host](#)

About Discussion

4 Interested
Share this event with your friends

Details

Learn more and get your questions answered about the Parkes Bypass by our project team.

The team will be available to discuss the concept design and Review of Environmental Factors at the following locations:

Clarinda Street, Parkes (in front of Discount Dave's):
Wednesday 31 July 2019, 10-1pm
Thursday 8 August 2019, 11-2pm

Parkes Arbour (between Coles and Target)
Wednesday 31 July 2019, 3pm – 6pm
Thursday 8 August 2019, 3pm – 6pm



NSW Roads
July 22 · 🌐

See what the Parkes Bypass design concept looks like and learn more at <https://rms.social/2YIUloE>.

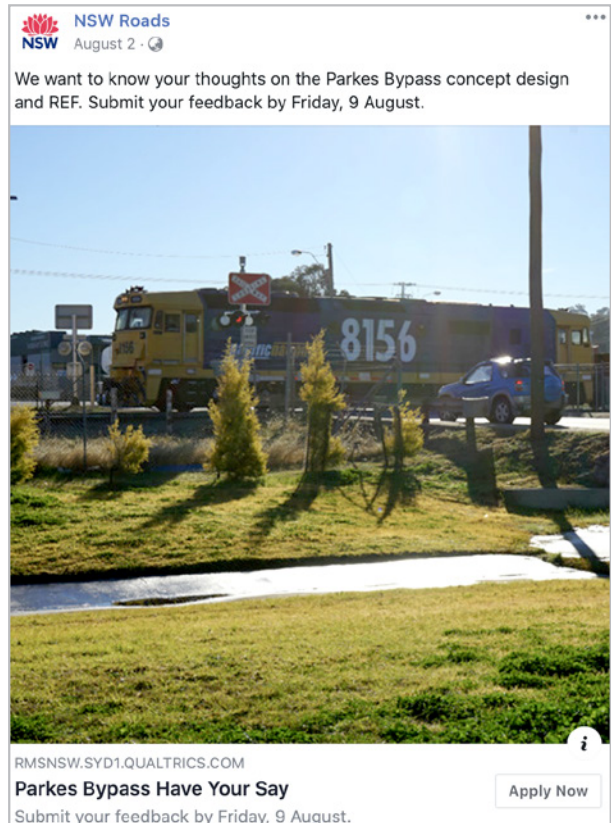
Click to expand
Newell Highway upgrade programme



NSW Roads
July 27 · 🌐

Find out how the proposed Parkes Bypass seeks to improve connectivity, road transport efficiency, and safety.

RMS.NSW.GOV.AU
Parkes Bypass Proposal
Providing better and more reliable trips. [Learn More](#)



NSW Roads
August 2 · 🌐

We want to know your thoughts on the Parkes Bypass concept design and REF. Submit your feedback by Friday, 9 August.

RMSNSW.SYD1.QUALTRICS.COM
Parkes Bypass Have Your Say
Submit your feedback by Friday, 9 August. [Apply Now](#)

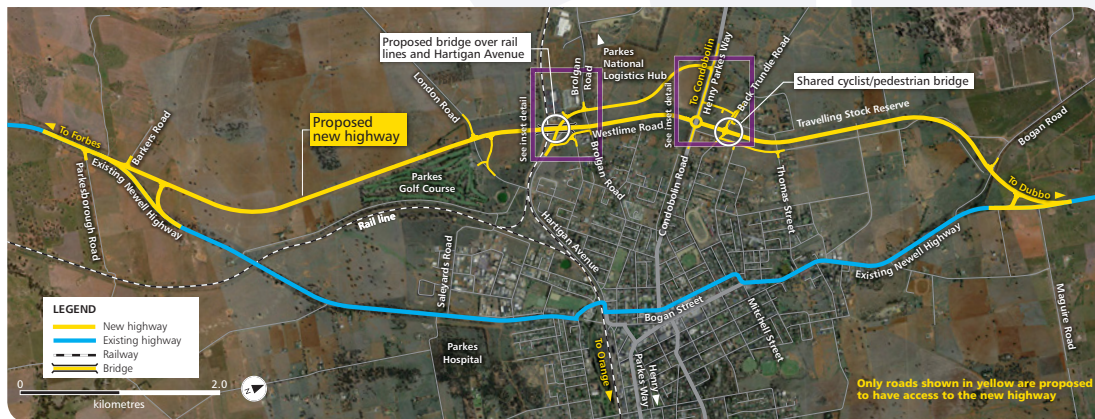
Appendix L - Poster



Roads and Maritime Services | July 2019

Parkes Bypass - Newell Highway upgrade

The Australian and New South Wales Governments are funding the Parkes Bypass to remove heavy vehicles travelling through Parkes.



Concept design - Parkes Bypass

Project objectives

The Parkes bypass will improve

- Freight efficiency and productivity
- Access for high productivity vehicles through Parkes
- Eliminate the travel delays caused by railway operations
- Travel times both North-South and East-West
- Amenity and safety for motorists and pedestrian on existing route through town
- Access to the Special Activation Precinct.

Meet the project team

The project team will be available to discuss the concept design and Review of Environmental Factors at the following locations:

Clarinda Street (in front of Discount Dave's)

- Tuesday 2 July 2019, 10am - 1pm
- Wednesday 10 July 2019, 10am - 12pm
- Thursday 18 July 2019, 11am - 2pm
- Monday 22 July 2019, 10am - 1pm
- Wednesday 31 July 2019, 10am - 1pm
- Thursday 08 August 2019, 11am - 2pm

Metro Plaza (near Woolworths)

- Tuesday 2 July 2019, 3pm - 6pm
- Wednesday 10 July 2019, 1pm - 4pm
- Thursday 18 July 2019, 5pm - 8pm
- Monday 22 July 2019, 2pm - 5pm

Parkes Arbour (between Target and Coles)

- Wednesday 31 July 2019, 3pm - 6pm
- Thursday 8 August 2019, 3pm - 6pm

For more information about the times and dates of these sessions, go to www.rms.work/parkesupgrade



Inset detail: Bridge over Hartigan Avenue and the Broken Hill and Parkes to Narromine rail lines



Inset detail: Four-way roundabout at Condobolin Road

Have your say


To provide your feedback or for more information, please contact our team on:

- ☎ 1800 741 636 (option 4)
- @ newell.upgrade@rms.nsw.gov.au
- 🌐 rms.work/parkesupgrade
- ✉ PO Box 334, Parkes NSW 2870




RMS 18.1080

Appendix M - Banner




Australian Government
BUILDING OUR FUTURE




NSW
GOVERNMENT


Parkes Bypass - Newell Highway upgrade Concept design



 Improving freight productivity

 Improve pedestrian safety

 Better and more reliable trips for people, business and freight





 Keep trucks off local streets

To provide your feedback or for more information, please contact our team on:

1800 741 636 Option 4 @ newell.upgrade@rms.nsw.gov.au

rms.work/parkesupgrade PO Box 334, Parkes NSW 2870



-  1800 741 636 (option 4)
-  newell.upgrade@rms.nsw.gov.au
-  nswroads.work/parkesupgrade
-  PO Box 334, Parkes NSW 2870

February 2020
ISBN: 978-1-922338-23-5
Pub No. 19.1499

