



Australian Government

BUILDING OUR FUTURE



Roads and Maritime Services | July 2019

Parkes Bypass - Newell Highway upgrade

Community Update Concept Design and Review of Environmental Factors



A PBS3a vehicle struggling to negotiate the existing Newell Highway through Parkes

The Australian and New South Wales Governments are funding the Parkes Bypass to remove heavy vehicles travelling through Parkes.

Project benefits



Improving the appeal of Parkes town



Improve pedestrian safety



Removing up to **1200 trucks** from local streets



Improving safety



Better and more reliable trips for people, businesses and freight



Improving freight productivity



Improving traffic flow



Save travel time

What's happening

Roads and Maritime Services has developed a concept design and environmental assessment of the proposed Parkes Bypass.

The preferred option is a 10.5 kilometre road to the west of Parkes which will bypass the town centre. The preferred option was decided following investigations and consultation with the community and stakeholders from December 2016 to February 2017.

The concept design and Review of Environmental Factors will be on display from **Monday 1 July to Friday 9 August**. Roads and Maritime encourages you to provide feedback during this time.

Project background

The Newell Highway is a major highway in NSW which connects Melbourne with Brisbane and supports the movement of local and interstate traffic, tourists, freight and livestock. The Newell Highway's current route through Parkes includes four 90-degree bends which are not safe for heavy vehicles.

The highway also crosses two major railway lines at level crossings which can cause Newell highway to close for up to 80 minutes each day. The proposed Parkes Bypass will provide safer journeys, easier freight access through Parkes and faster travel time for all road users.

Project objectives

The Parkes Bypass will improve:

- Freight efficiency and productivity
- Access for high productivity vehicles through Parkes
- Eliminate the travel delays caused by railway operations
- Travel times both North-South and East-West
- Amenity and safety for motorists and pedestrian on existing route through town
- Access to the Special Activation Precinct



Concept design of bridge over Hartigan Avenue and the Broken Hill and Parkes to Narromine rail lines



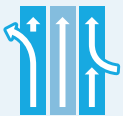
Improving freight productivity

The bypass is a dedicated route with minimal structural restrictions for heavy vehicles so they can travel through Parkes with greater ease.



Removing up to 1200 trucks from local streets

The bypass will divert heavy vehicles off the Newell Highway through Parkes and onto a new western route.



Improving traffic flow

A new bypass and road connections will open up the road network, creating smoother trips for all road users, especially during peak times.



Improving safety

A bypass route will minimise conflicts between road users.

Improve pedestrian safety



A shared cyclist and pedestrian bridge will allow non-motorists to access the intersection without coming into conflict with vehicles.



Save travel time

A new bridge over the railway line on Hartigan Avenue will minimise current delays to traffic by as much as 10 minutes North South.

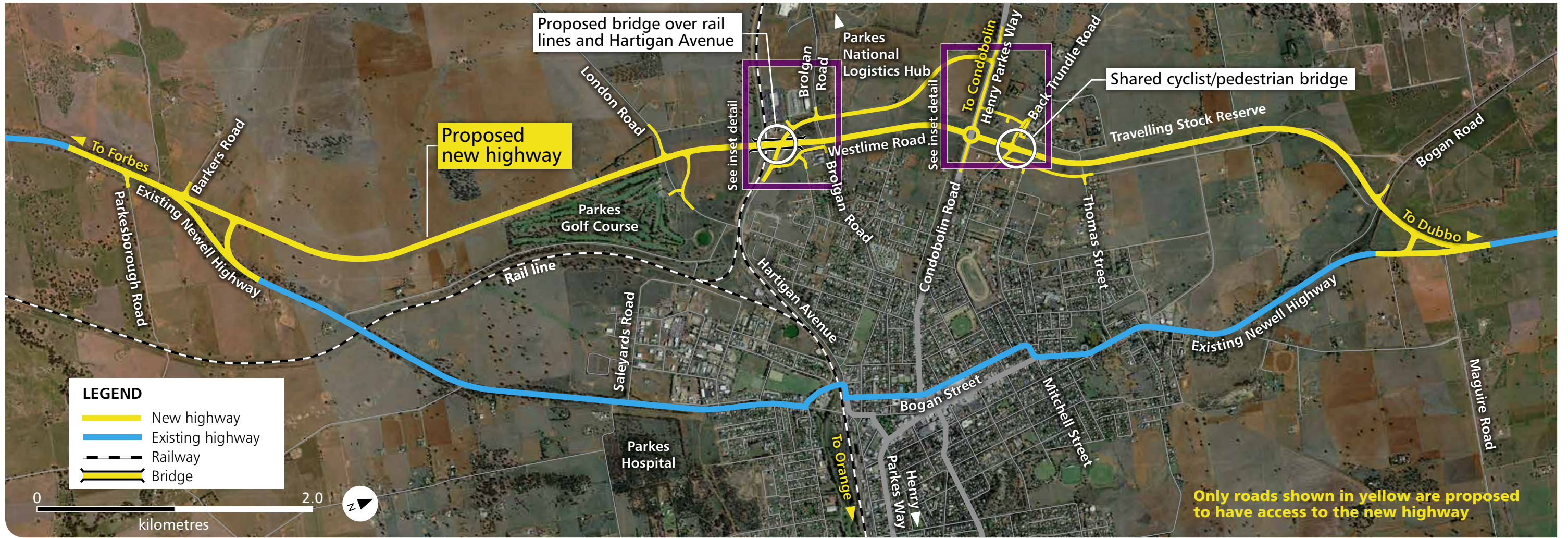


Improving the appeal of Parkes town

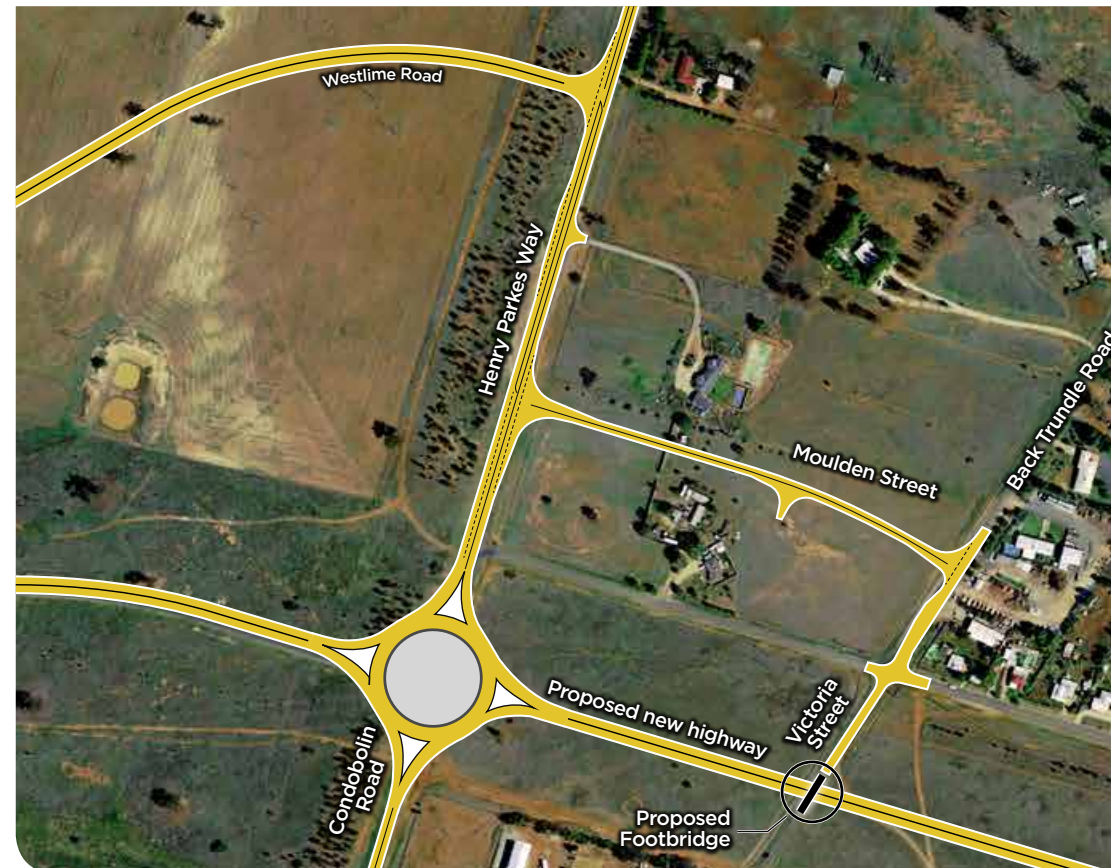
Less heavy vehicles travelling through Parkes will keep local roads for lighter vehicles.



Better and more reliable trips for people, businesses and freight



Bridge over Hartigan Avenue and the Broken Hill and Parkes to Narromine rail lines



Four-way roundabout at Condobolin Road

Project features

A new 10.5 kilometre bypass route of Parkes would include:

- A two-lane road (one lane in each direction) to the west of Parkes
- New intersections and a four-way roundabout at Condobolin Road
- A bridge over the Broken Hill and Parkes to Narromine rail lines at Hartigan Avenue
- A shared pedestrian and cycleway bridge connecting Victoria Street and Back Trundle Road
- Facilitate future connectivity to the Parkes Special activation Precinct (SAP)
- An extension of Hartigan Avenue to connect Brolgan Road and Condobolin Road
- Changes to local road access and new connections to the bypass.



The bridge over the Broken Hill and Parkes to Narromine rail lines at Hartigan Avenue will accommodate double stacked container trains



You are invited to have your say on the Concept Design and Review of Environmental Factors (REF) for the Parkes Bypass. The Concept Design and REF will be on display from Monday 1st July to Friday 9th August.

Visit us online

Have your say and stay informed by visiting the project website where you can also:

-  View a **360 degree flyover** of the project concept design
-  View and download all **project documents**
-  Sign up to our **project mailing list** to receive project updates.

Unstaffed display locations

The concept design and Review of Environmental Factors will be on display from **Monday 1 July to Friday 9 August** at the following locations:

Parkes Shire Council Administration Centre

2 Cecile Street, Parkes

Service NSW, Parkes

51-55 Currajong Street, Parkes

Drop in sessions

The project team will be available to discuss the concept design and Review of Environmental Factors at the following locations:

Clarinda Street (in front of Discount Dave's)

- Tuesday 2 July 2019, 10am - 1pm
- Wednesday 10 July 2019, 10am - 12pm
- Thursday 18 July 2019, 11am - 2pm
- Monday 22 July 2019, 10am - 1pm
- Wednesday 31 July 2019, 10am - 1pm
- Thursday 08 August 2019, 11am - 2pm

Metro Plaza (near Woolworths)

- Tuesday 2 July 2019, 3pm - 6pm
- Wednesday 10 July 2019, 1pm - 4pm
- Thursday 18 July 2019, 5pm - 8pm
- Monday 22 July 2019, 2pm - 5pm

Parkes Harbour (between Target and Coles)







- Wednesday 31 July 2019, 3pm - 6pm
- Thursday 8 August 2019, 3pm - 6pm

View the Parkes Bypass fly-over and 360 degree animation



Review of Environmental Factors

Roads and Maritime Services has carried out an environmental assessment on the proposed Parkes Bypass. The Review of Environmental Factors (REF) assesses the potential social and environmental impacts of the project and identifies ways to minimise these impacts. The REF investigates the following key issues for the project:

-  **Traffic and transport**
-  **Socio-economic**
-  **Noise and vibration**
-  **Landscape character and visual**
-  **Biodiversity**
-  **Other impacts**

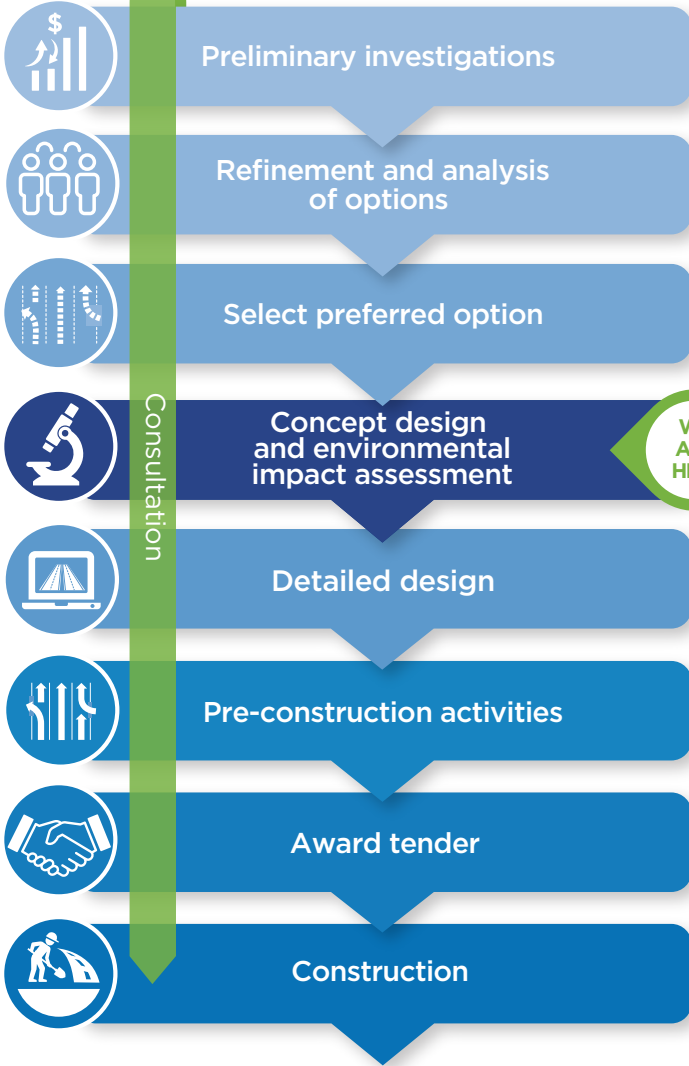
Further information on the documents within the REF are available on the project website.



Concept design of four-way roundabout at Condobolin Road

Next steps?

Roads and Maritime Services will continue to engage with the community and stakeholders throughout the planning and delivery of the Parkes Bypass. Following an approval process, construction is scheduled to start in May 2021 and take about three years to complete. This will be subject to funding, weather and access considerations.



Newell Highway at the Welcome railway crossing south of Parkes

Contact us:

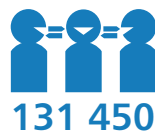
To provide your feedback or for more information, please contact our team on:

☎ 1800 741 636 (option 4)

@ newell.upgrade@rms.nsw.gov.au

🖥 rms.work/parkesupgrade

✉ PO Box 334, Parkes NSW 2870



If you need help understanding the information, please contact the Translating and Interpreting Service on **131 450** and ask them to call us on **1800 741 636 (option 4)**

June 2019
RMS. 19.1081



Privacy: Roads and Maritime Services is subject to the *Privacy and Personal Information Protection Act 1998* ("PIIP Act") which requires that we comply with the Information Privacy Principles set out in the PIIP Act. All information in correspondence is collected for the sole purpose of assisting in the assessment of this proposal/ delivering this project. The information received, including names and addresses of respondents, may be published in subsequent documents unless a clear indication is given in the correspondence that all or part of that information is not to be published. Otherwise RMS will only disclose your personal information, without your consent, if authorised by the law. Your personal information will be held by RMS at 55 Currajong Street, Parkes NSW 2870. You have the right to access and correct the information if you believe that it is incorrect.