



Australian Government

BUILDING OUR FUTURE



Transport for NSW

Newell Highway upgrade, Parkes Bypass

Project update | December 2020

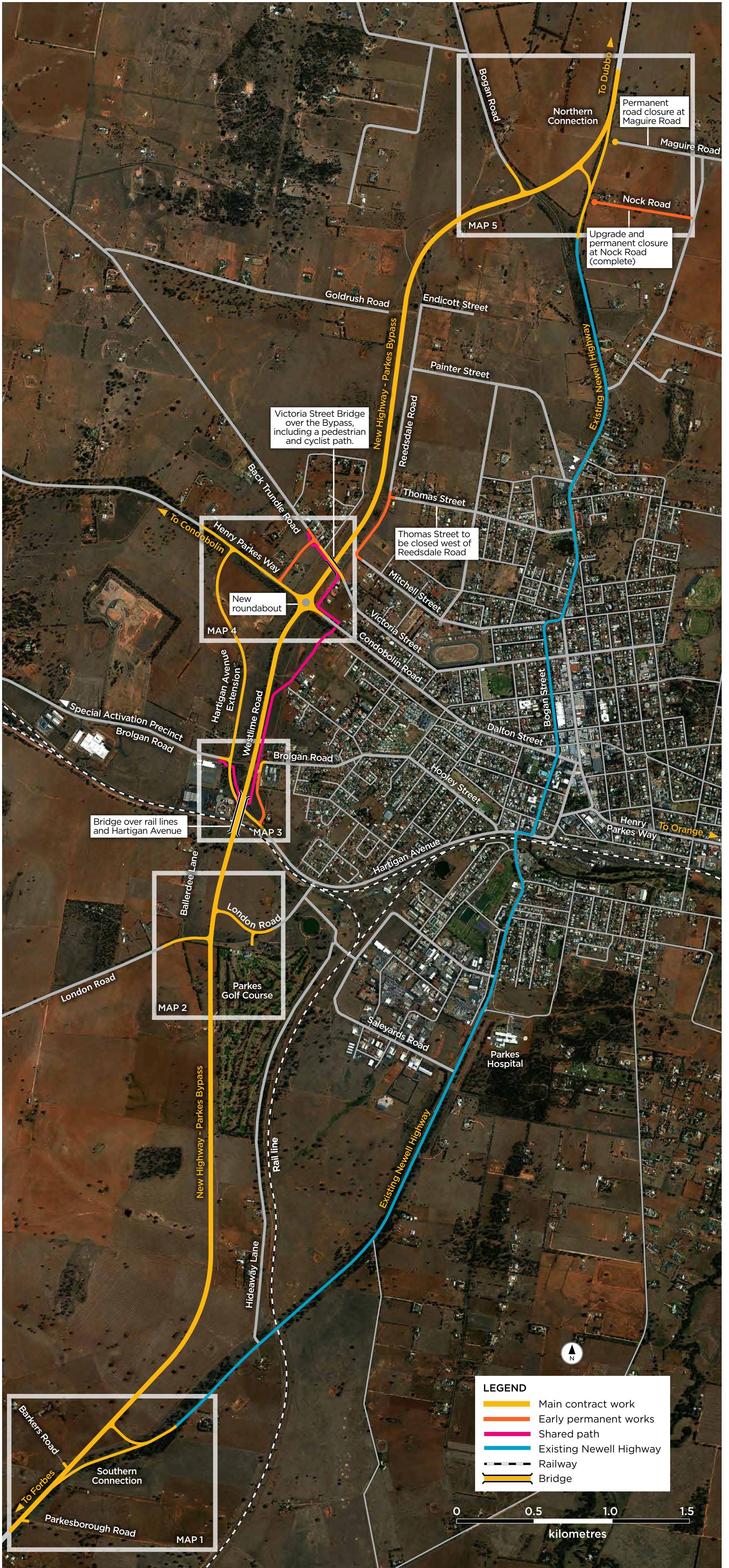


Construction underway on the new road connecting Thomas Street and Mitchell Street as part of the early work being delivered by Parkes Shire Council on behalf of Transport for NSW.

The Australian and NSW Governments are funding the \$187.2 million Parkes Bypass, which will improve connectivity, road transport efficiency and safety for local and interstate motorists.

The upgrade involves relocating the highway about two kilometres west, between Maguire Road to the north and Barkers Road to the south – a total length of 10.5 kilometres. The Bypass will reduce travel time by up to 10 minutes and increase safety by removing

more than 1200 trucks a day from the town of Parkes. The Bypass will also provide necessary connections to the Special Activation Precinct on the western edge of Parkes.



Map 1. Southern Connection (between Bypass alignment and existing Newell Highway)



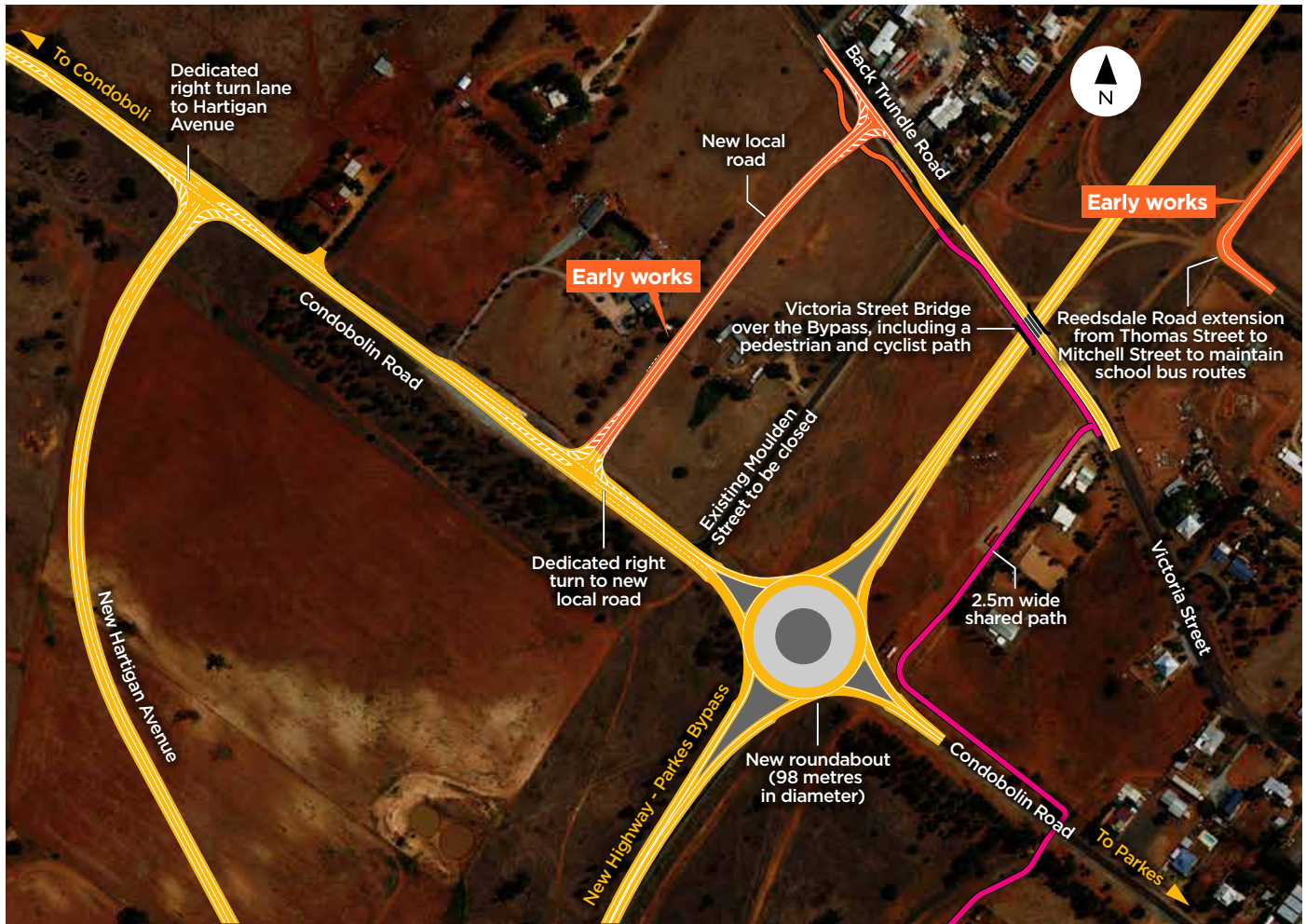
Map 2. Changes at London Road



Map 3. Bridge over rail lines and Hartigan Avenue



Map 4. New Roundabout and Victoria Street Bridge



Map 5. Northern Connection (between Bypass alignment and existing Newell Highway)



Project features

The new highway west of Parkes will be about 10.5 kilometres long and key features include:

A two-lane road (one lane in each direction) with five key intersections including:

- Two T-intersections, north and south between the existing Newell Highway and the Bypass
- A split T-intersection at London Road
- A four-way roundabout at Condobolin Road
- A T-intersection with Bogon Road.

Two bridges:

- A bridge over two rail lines and Hartigan Ave
- A bridge over the Bypass on Victoria Street.

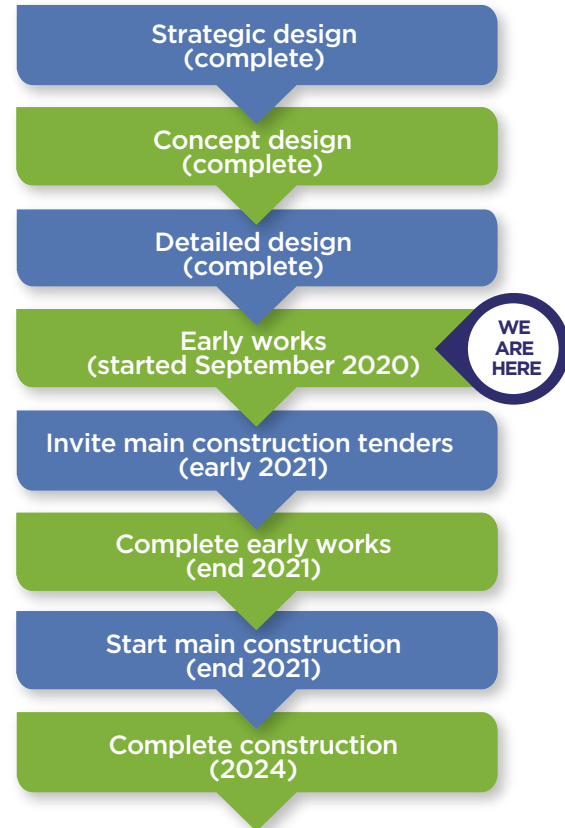
An extension of Hartigan Avenue (Henry Parkes Way) with intersection with Brolgan Road, Billy Mac Place and Condobolin Road.

Realignment, reconfiguration and changes to local roads including:

- Shifting part of Moulden Street to the west
- Maguire Road and Nock Road converted to cul-de-sacs
- New connection between Brolgan Road and Hartigan Avenue
- Connection between Thomas Street and Mitchell Street via the Reedsdale Road extension.

A new shared path for pedestrians and cyclists which will connect Brolgan Road, Condobolin Road and Victoria Street (shown in pink on the map).

Project timeline



Frequently asked questions

What early work is being done?

- Parkes Shire Council, on behalf of Transport for NSW, is carrying out early works including the construction of four new local roads (highlighted in orange on the maps):
 - Nock Road has been completed
 - Reedsdale Road extension, which connects the western ends of Thomas Street and Mitchell Street, will be completed on 21 December
 - A new bitumen road between Condobolin Road and Back Trundle Road to replace the existing Moulden Street will be constructed in 2021
 - A new section of road between Brogan Road and Hartigan Avenue will be constructed in 2021.
- Utility relocations including protection of the high pressure gas main and relocation of water mains, optic fibre, power poles, overhead electrical power and relocation of medium pressure gas. These will occur through the entire length of the bypass corridor. You will receive notice from the individual utility providers if there are interruptions to these services.

Who will be able to access Victoria Street Bridge?

Following feedback received from the community during our public display in 2019, the Victoria Street Bridge design has been changed. The bridge will still accommodate pedestrians and cyclists with a 2.5m wide shared path and has been upgraded to also allow access for vehicles. The bridge goes over the Parkes Bypass and there will be no access to the Parkes Bypass from Victoria Street/Back Trundle Road.

I live near the Bypass - what are you doing about increased traffic noise?

TfNSW has prepared an Operational Noise Report which outlines the expected changes in road traffic noise as a result of the Bypass.

Some properties will be subject to an increase in traffic noise, and will be eligible for noise reduction treatments.

We are consulting with property owners who qualify to receive noise reduction treatments, which is carried out through an independent assessment process.

What will happen to the Travelling Stock Route?

The east-west Travelling Stock Reserve (TSR) along Nock Road and Bogan Road will remain in operation throughout construction and long term. A new stock crossing across the new highway will be constructed as part of the Bypass (refer map 5).

From 2021 onwards the north-south TSR between Condobolin Road and Bogan Road will be closed.

Will motorists still be able to access Crown Land within the project area?

There will be no access to the existing tracks across Crown Land for motorists from early 2021. The corridor will be fenced to allow for construction of the Bypass.

Will Thomas Street continue to connect to Moulden Street?

The western end of Thomas Street will be closed to Moulden Street following construction of the Bypass. However, Thomas Street will now connect to Mitchell Street via the Reedsdale Road extension.

When will tenders be invited for the main construction works on the bypass?

Tenders will be invited next year for a main contractor to deliver the works. Construction is expected to start by the end of 2021. Early works are underway and planned to continue through to the start of the main construction works.

What are the work hours for the construction work?

We will be working between 7am and 6pm Monday to Friday. Work outside these hours (night work, Saturday work etc.) may be necessary. If you live near the work, we will let you know in advance if this is required.

Contact us:

To provide your feedback or for more information, please contact our team on:

 1800 741 636 (option 4)

 newell.upgrade@transport.nsw.gov.au

 nswroads.work/parkesupgrade

 PO Box 334, Parkes NSW 2870



Save
travel time



Improve
pedestrian safety



Better and more
reliable trips
for people, businesses and freight



Improving
freight productivity