

# The new Grafton bridge

Grafton Business Liaison Group

16 October 2018



# Villiers Street roundabout

- The project team is continuing to look at options to replace part of the concrete pavement at the roundabout
- Planning at this stage is to implement a T-intersection in early 2019 to enable the replacement pavement work to be undertaken in stages
- The T-intersection would be set up overnight to minimise impacts on businesses, residents and motorists.

# Services relocation update

- Storm water and water main work still required adjacent to the TAFE on Pound Street
- Install of lights on the new street poles awaiting approval of the LED lights by Essential Energy. Until then, the lighting towers will remain in place.

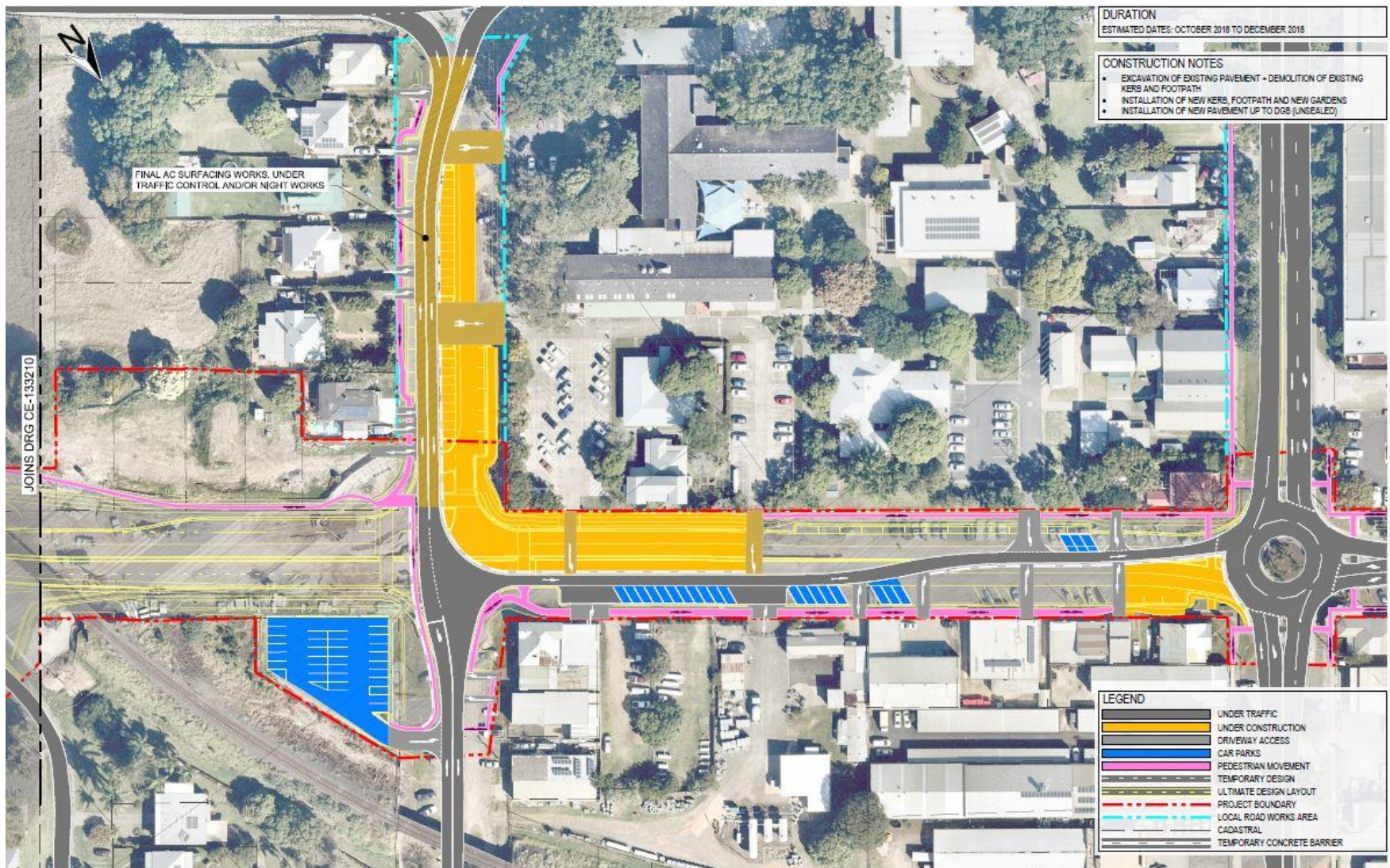


Power relocation work underway at night in South Grafton  
(September 2018)

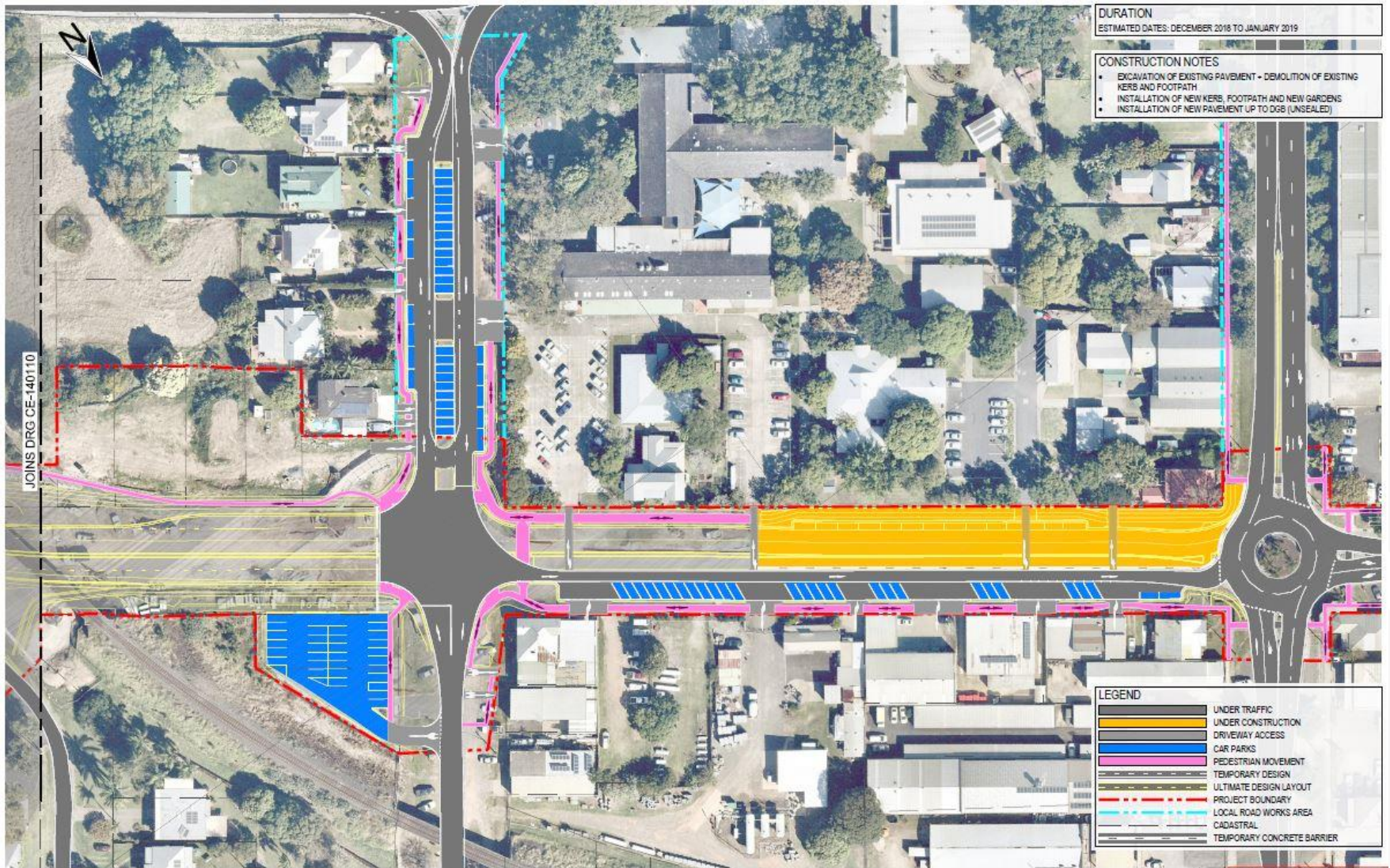
# Landscaping and design update

- Deletion of rain gardens is still being investigated. The project team is reviewing the community requests in consultation with the urban designer
- The Urban Design and Landscaping Plan was approved by the Department of Planning and any change would need to be communicated to the department and the broader community including Clarence Valley Council and the Chamber of Commerce
- An amended footpath design adjacent to Jada Hair Salon is still a work in progress due to conflicts with drainage, electrical conduits for the traffic lights and landscaping.

# October-December 2018 (weather permitting)

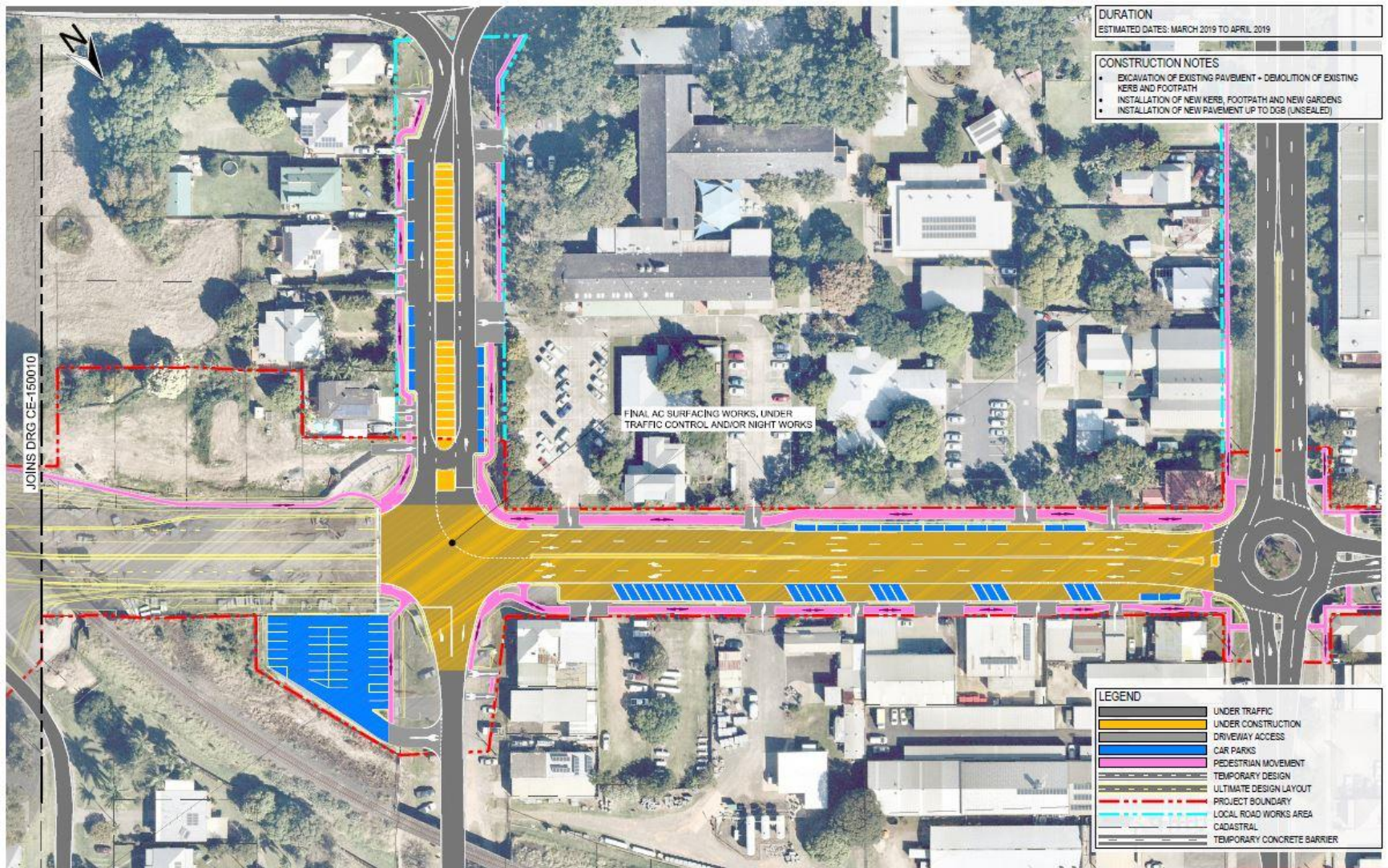


# December 2018-January 2019 (weather permitting)





# March-April 2019 (weather permitting)





# Conclusion

---

- Next meeting
- Further questions?



Aerial view of segments lined up in the pre-cast yard (September 2018)

# Contact information

---

For more information about the project please contact:

**Phone:** 1800 918 759 (toll free)

**Email:** [graftonbridgecommunity@fultonhogan.com.au](mailto:graftonbridgecommunity@fultonhogan.com.au)

**Mail:** PO Box 546 Grafton NSW 2460

Visit the Community Display Centre at:

- Corner of Duke and Pound streets Grafton
- Open Monday to Friday 8.30 am to 4.30 pm