

The new Grafton bridge

Grafton Business Liaison Group

14 August 2018

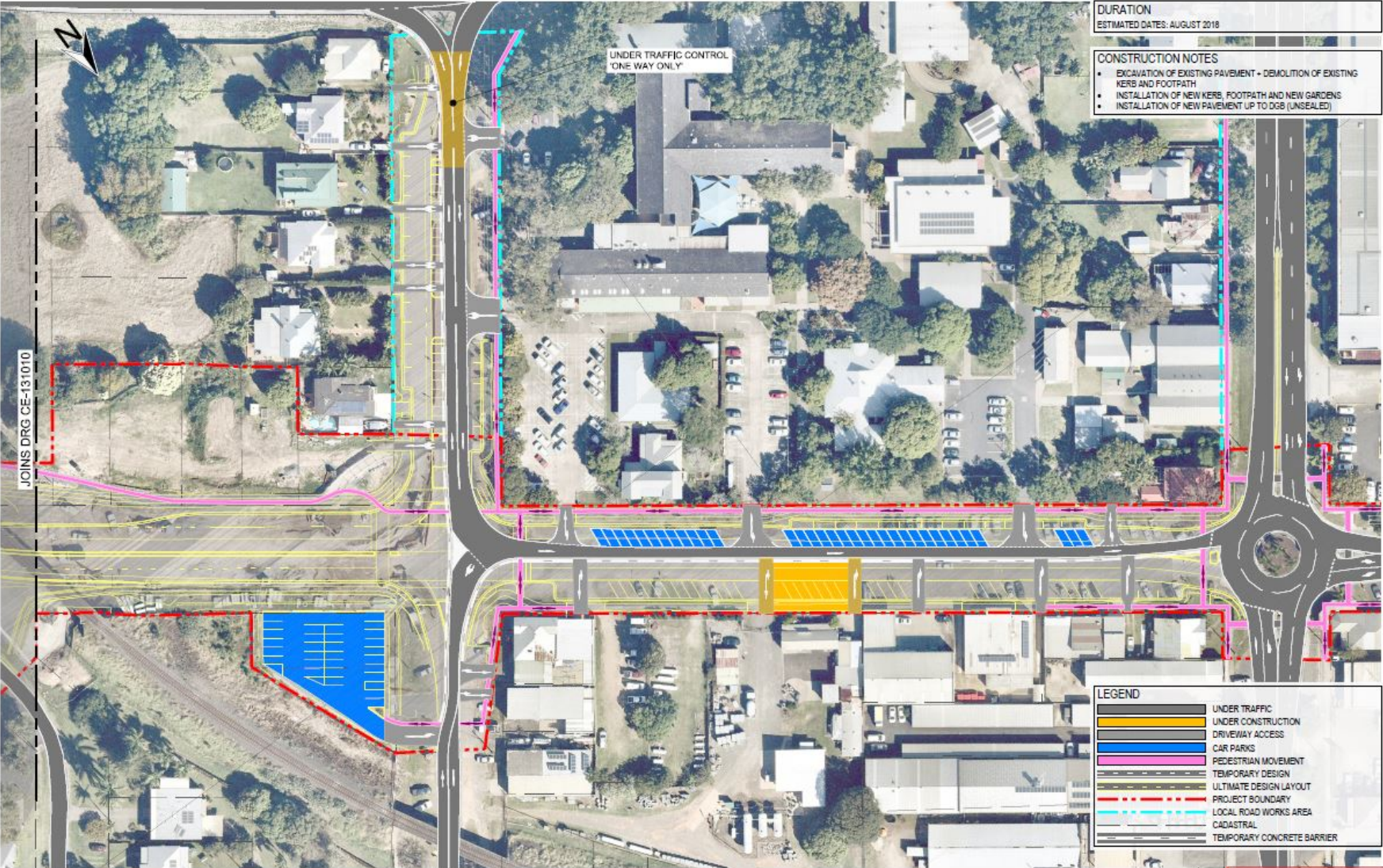


Recent traffic changes

Challenges during construction:

- Footpath design matching current requirements with existing buildings
- Unexpected services found
- Modification required to the low voltage power relocation
- Obtaining a stable platform/foundation on which to build the road
- Mitigating dust, managing vibration.

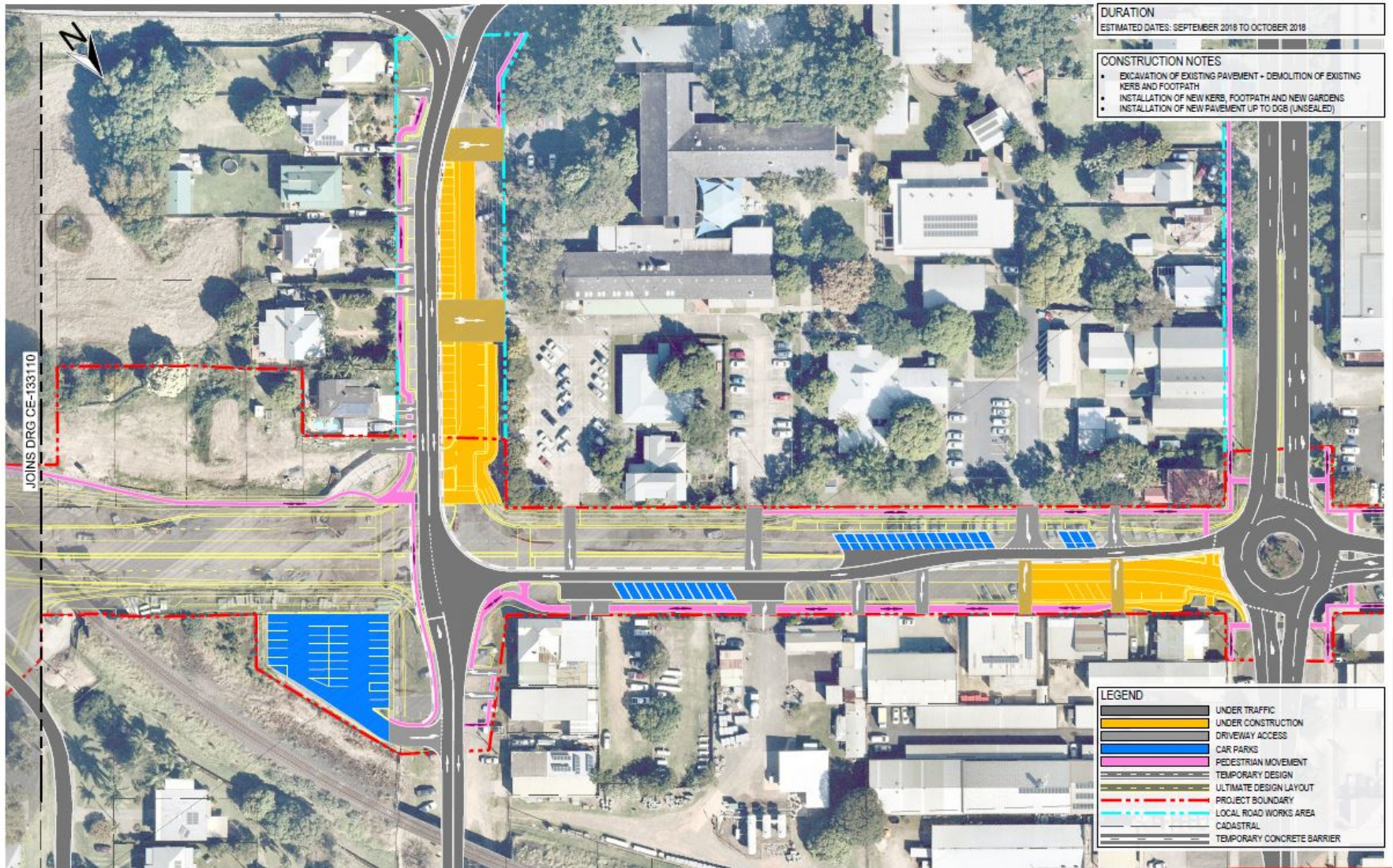
August 2018 (weather permitting)



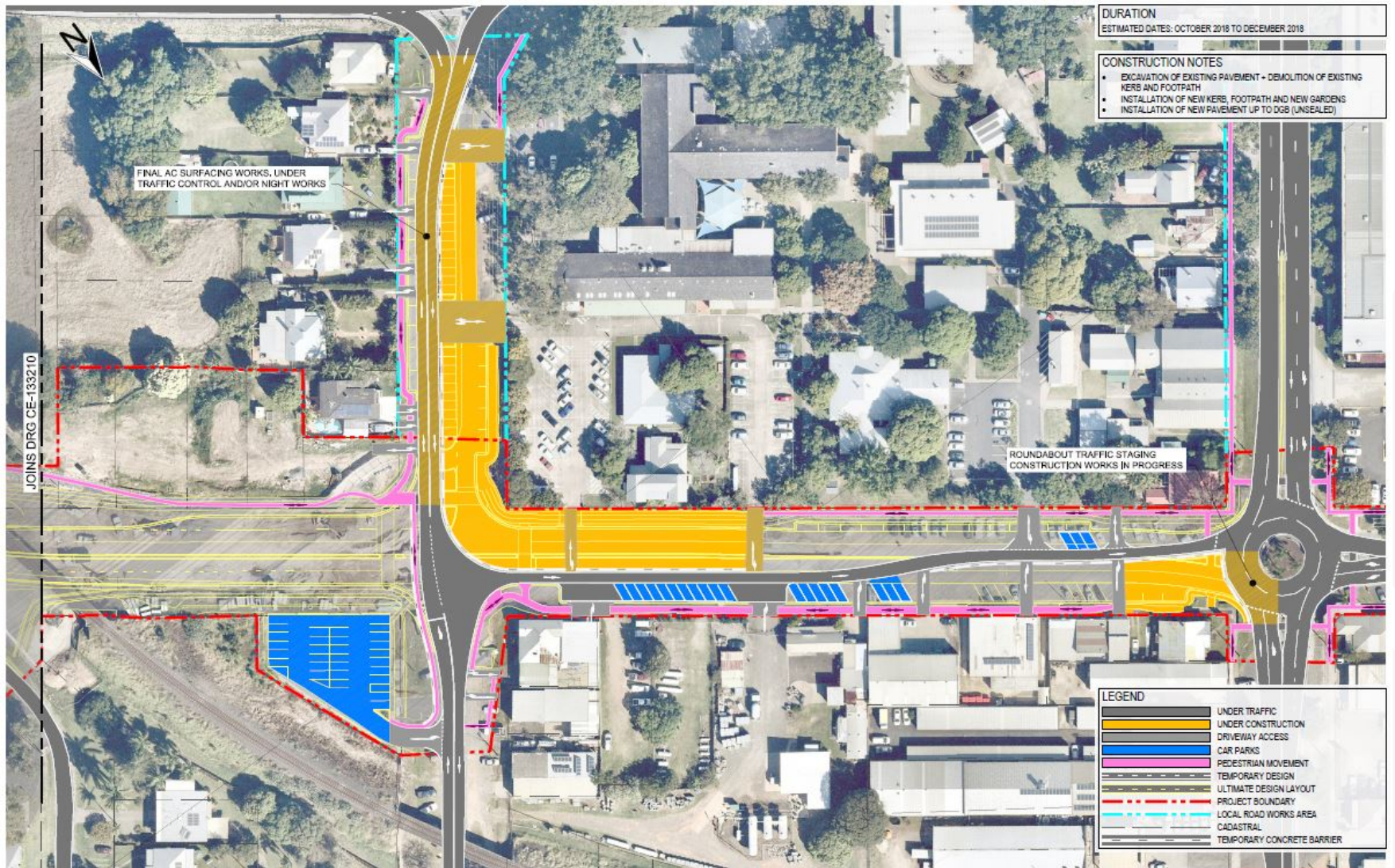
August-September 2018 (weather permitting)



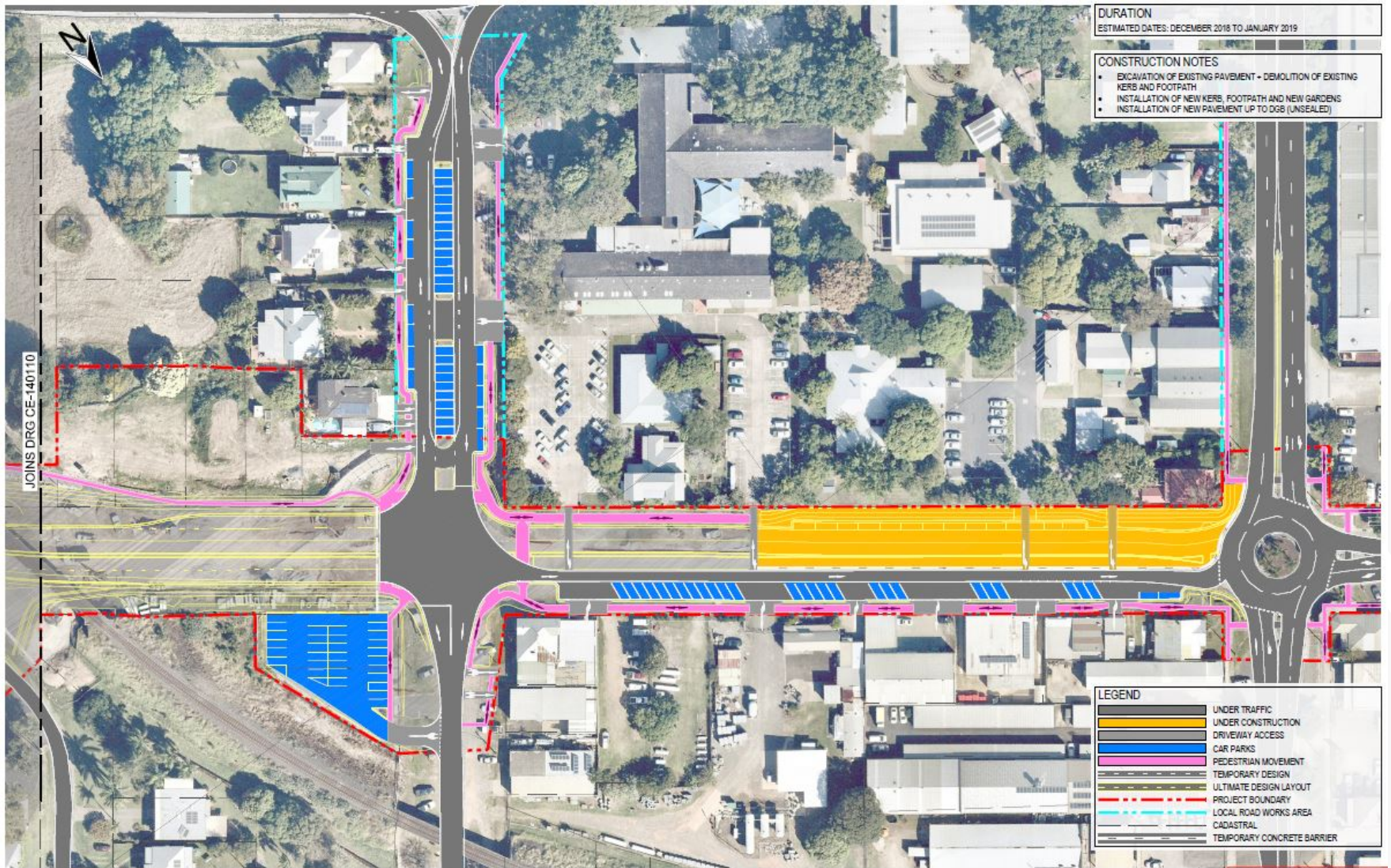
September-October 2018, weather permitting



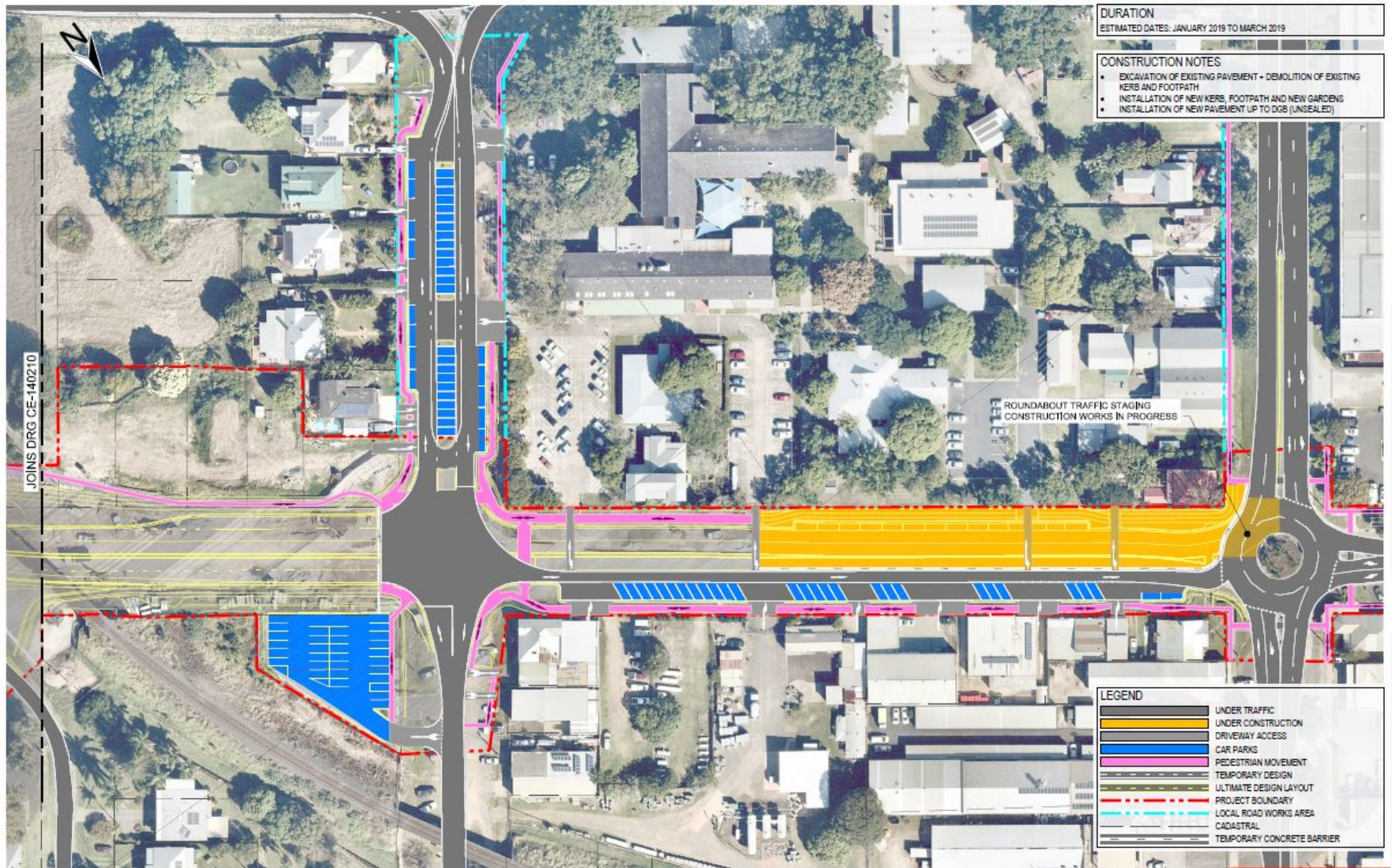
October-December (weather permitting)



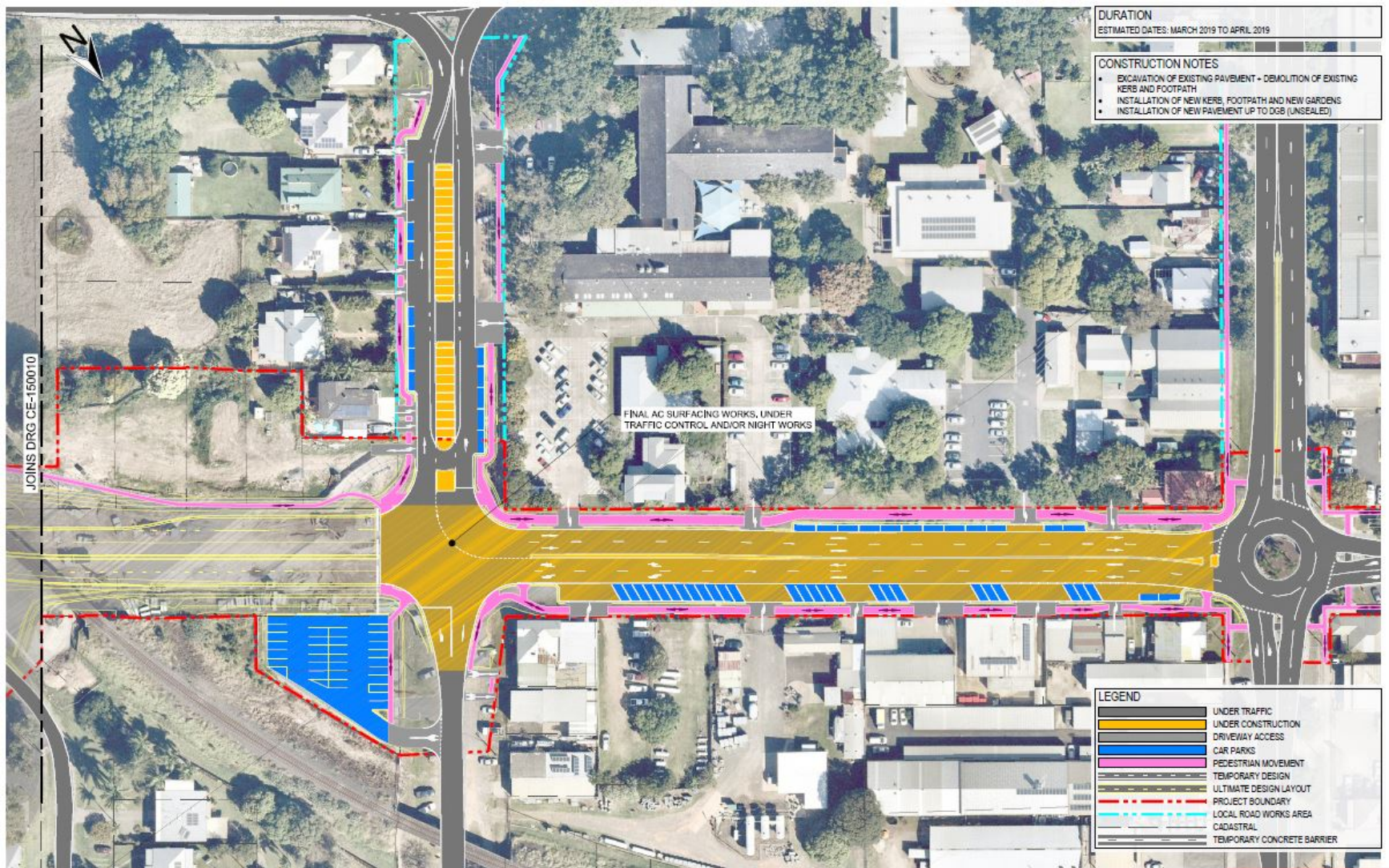
December 2018-January 2019 (weather permitting)



January-March 2019 (weather permitting)



March-April 2019 (weather permitting)



Conclusion

- Next meeting
- Further questions?



Artist's impression of the new Grafton bridge

Contact information

For more information about the project please contact:

Phone: 1800 918 759 (toll free)

Email: graftonbridgecommunity@fultonhogan.com.au

Mail: PO Box 546 Grafton NSW 2460

Visit the Community Display Centre at:

- Corner of Duke and Pound streets Grafton
- Open Monday to Friday 8.30 am to 4.30 pm