

Additional crossing of the Clarence River at Grafton

Six options are short-listed in the work to identify a preferred option for an additional crossing of the Clarence River at Grafton. This update shows the short-listed options and describes the next steps for the project.

Roads and Maritime Services, RMS (formerly Roads and Traffic Authority) is working with the community to identify a preferred location for an additional crossing of the Clarence River at Grafton.

There are six route options within the five strategic corridors that will go forward for further investigation.

Community comment, a community and stakeholder workshop (November 2011), and technical investigations helped to identify the short-list of options.

The short-listed options are shown in the map overleaf:

- E** Cowan Street South Grafton to Villiers Street, Grafton.
- A** New bridge parallel to and immediately upstream of the existing bridge connecting Bent Street, South Grafton and Fitzroy Street, Grafton.
- C** Junction of Pacific Highway and Gwydir Highway, South Grafton to Pound Street, Grafton.
- 11** Existing Pacific Highway north of South Grafton to Fry Street, Grafton.
- 14** Existing Pacific Highway north of South Grafton to North Street Grafton via Kirchner Street.
- 15** Existing Pacific Highway north of South Grafton to Summerland Way north of Grafton, via Kirchner Street.

RMS does not have a preferred option for the additional crossing.

Those property owners potentially directly affected by the six short-listed options are being contacted directly. If you have any questions or concerns please get in touch with the project team, contact details are on the back page.

Chris Clark
Project Manager

Preliminary Route Options Report – Final

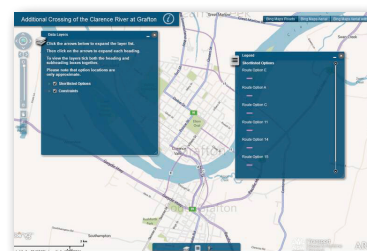
The *Preliminary Route Options Report – Final* (January 2012) is available. The report is in three parts:

Part 1 (August 2011) describes the existing environment in the Grafton area and potential issues and constraints relevant to an additional crossing.

Part 2 (October 2011) assesses the 25 preliminary route options, identified from the June 2011 Feasibility Assessment on the 41 community suggestions, against the project objectives.

Part 3 (January 2012) provides a summary of community feedback received and the community and stakeholder evaluation workshop. The process to identify the short-list of options to go forward and the short-listed options are described.

Interactive maps on the website

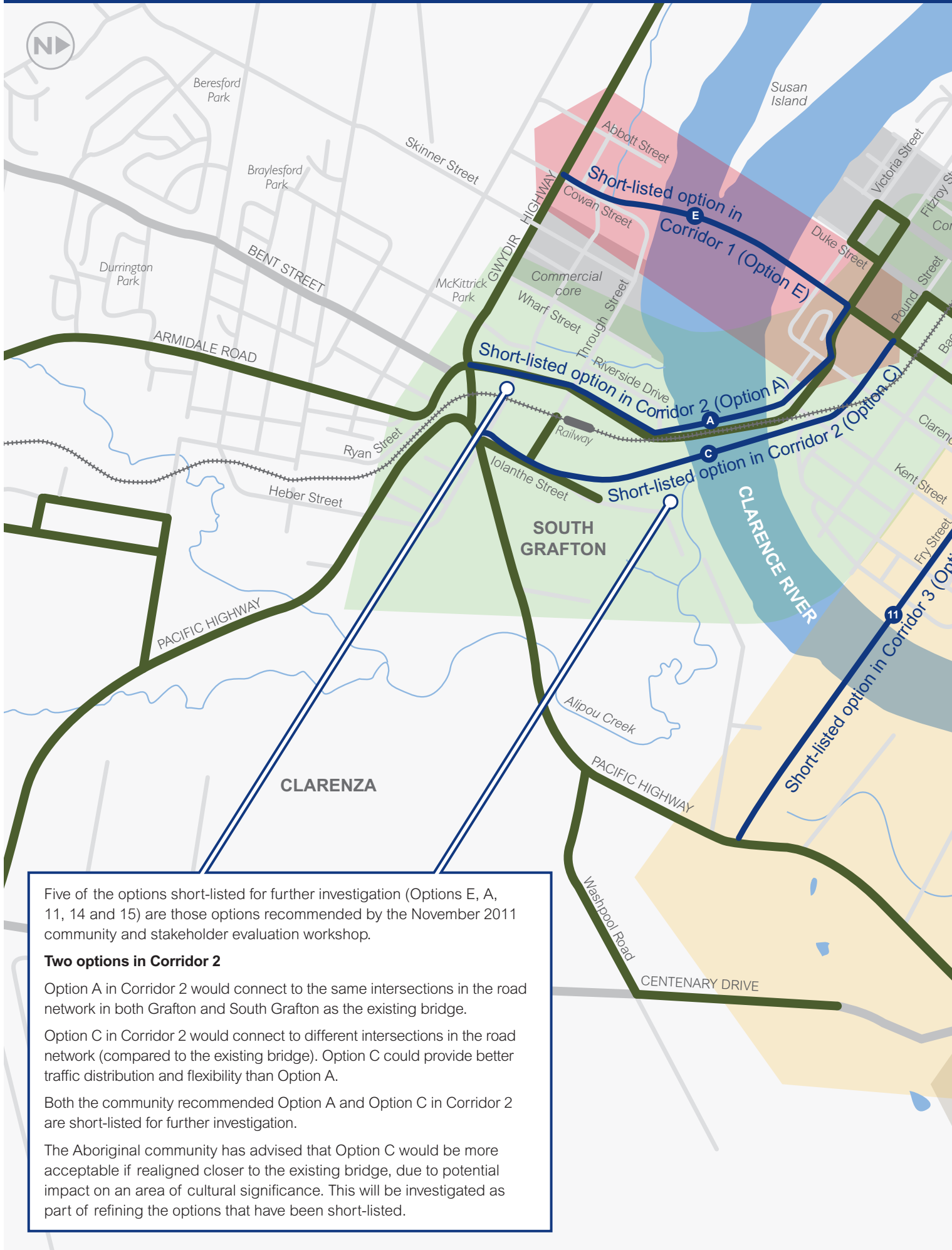


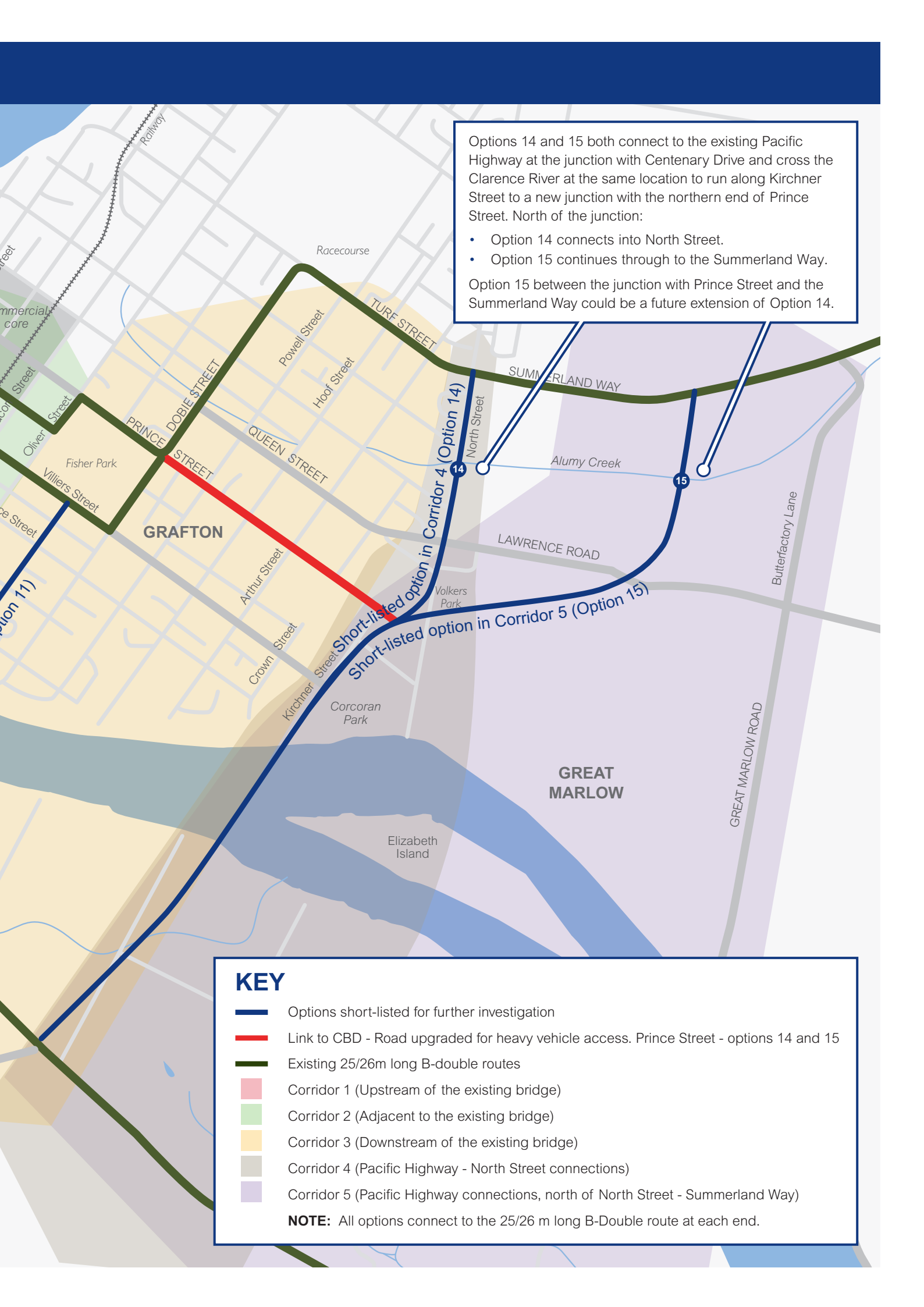
Interactive maps are on the project website showing the six options.

The maps show the issues and potential constraints when planning an additional crossing. The information on the maps is from the *Preliminary Route Options Report – Final* (January 2012).

Go to www.rta.nsw.gov.au/graftonbridge and click on the link to interactive maps.

The map below shows the six short-listed options to go forward for further investigation





Options 14 and 15 both connect to the existing Pacific Highway at the junction with Centenary Drive and cross the Clarence River at the same location to run along Kirchner Street to a new junction with the northern end of Prince Street. North of the junction:

- Option 14 connects into North Street.
- Option 15 continues through to the Summerland Way.

Option 15 between the junction with Prince Street and the Summerland Way could be a future extension of Option 14.

KEY

- Options short-listed for further investigation
- Link to CBD - Road upgraded for heavy vehicle access. Prince Street - options 14 and 15
- Existing 25/26m long B-double routes
- Corridor 1 (Upstream of the existing bridge)
- Corridor 2 (Adjacent to the existing bridge)
- Corridor 3 (Downstream of the existing bridge)
- Corridor 4 (Pacific Highway - North Street connections)
- Corridor 5 (Pacific Highway connections, north of North Street - Summerland Way)

NOTE: All options connect to the 25/26 m long B-Double route at each end.

Field investigations

Field investigations will be undertaken on the short-listed options including:

- Survey work.
- Geotechnical investigations.
- Flora and fauna studies.
- Traffic surveys.
- Examination of Aboriginal and/or non-Aboriginal heritage.

The project team will need to access properties to do this.

A letter of request with further details will be sent to the owners of properties proposed for use in the investigations.

For more information on field investigations please view the fact sheets available on the Grafton Bridge project website www.rta.nsw.gov.au/graftonbridge.

Process from here

Technical and environmental investigations will provide more information on the short-listed options. The investigations will be described in the Route Options Development Report (RODR).

The report will be displayed for community comment. Community comments, the investigations undertaken and the outcomes of the value management workshop will input to a decision on a recommended preferred option in 2012.

Your feedback on the recommended preferred option will be considered before a decision is made on the preferred option for an additional crossing of the Clarence River at Grafton.

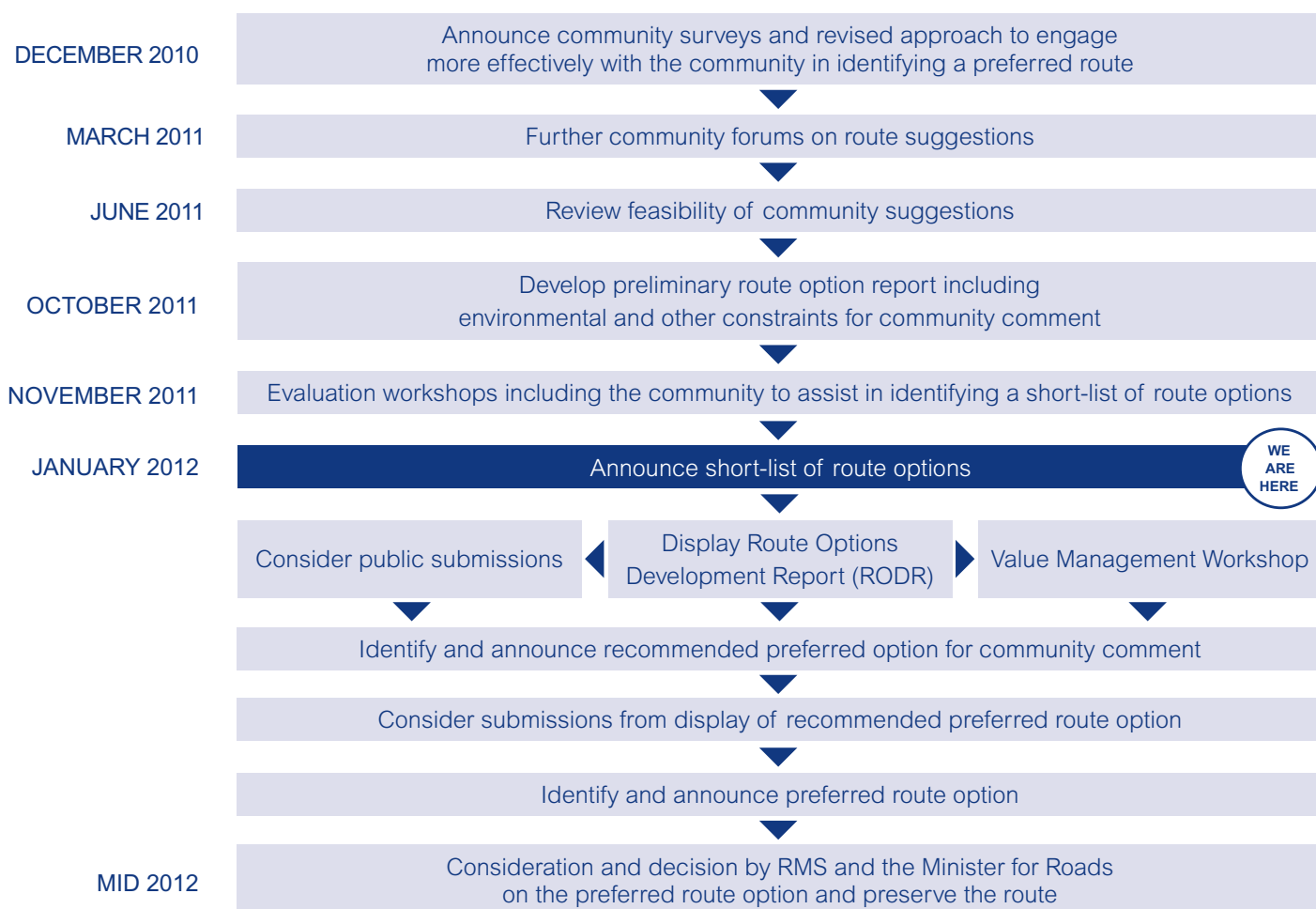
Community involvement will continue. The process to identify a recommended preferred option for an additional crossing is shown in the flowchart below.

Contact the project team:

Phone: 1800 633 332 (toll free)
 Email: graftonbridge@rta.nsw.gov.au
 Write to: Chris Clark RMS Project Manager
 PO Box 546 Grafton NSW 2460

Or visit the shop front at the Pacific Highway office for more information at 21 Prince Street, Grafton (opposite Westpac Bank), Monday to Friday, 8.30am to 4.30pm.

To find out where the nearest display location is near you visit the project website www.rta.nsw.gov.au/graftonbridge.



© Roads and Maritime Services

Roads and Maritime Services ("RMS") is subject to the Privacy and Personal Information Protection Act 1998 (or PPIP Act) which requires that we comply with the Information Protection Principles set out in the PPIP Act. All information in correspondence is collected for the sole purpose of assisting in the assessment of this proposal. The information received, including names and addresses of respondents, may be published in subsequent documents unless a clear indication is given in the correspondence that all or part of that information is not to be published. Otherwise RMS will only disclose your personal information, without your consent, if authorised by the law. Your personal information will be held by RMS at 101 Miller Street, North Sydney NSW 2060. You have the right to access and correct the information if you believe that it is incorrect.