

SOUTH GRAFTON

TABLE 3

- Options A & B, if chosen, do not alleviate traffic congestion now & in the future.
- Options C & D are a better solution than A & B as they provide an alternative green field route and therefore reduces congestion.
- South Grafton is already a very busy area, in peak hours and raining days, congestion goes all the way back to Kent St & Armitage Rd.
- It makes sense to have a route with minimal impacts, Options C & D would attract enough traffic as it is close to Buntings & not too far out of South Grafton.
- The current bridge ^{would} stay open but no trucks, which is currently the problem.

for options C & D

Grafton Bridge

MR83 Summerland Way - Additional Clarence River crossing - preliminary options

MARCH 2010

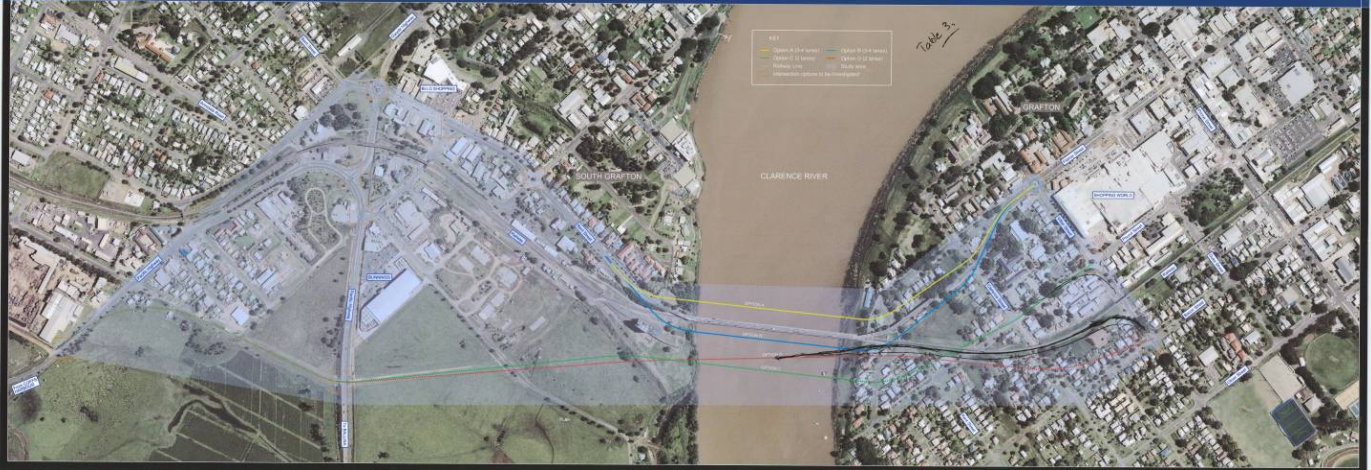


TABLE 3

GRAFTON

- Options A & B would not cause too much stress, as the options C & D go through properties.
- Options A & B, if chosen do not alleviate traffic congestion, now & in the future.
- "Follow the railway line" should be considered - see line on plan (Black Option). Next to railway line.
- Options ~~A & B~~ D has a larger impact on properties in Grafton.
- Option C follows Penn St & has less property impact than D.
- The black option does not need to cross the railway.