

Additional crossing of the Clarence River at Grafton

Community workshops

11 March 2010



Who is here?

- Rob van Ieresel – Facilitator
- Damien Sartori – Manager Project Services
- Stephen Williamson – Project Manager
- Phillip Vand er eest – Senior Project Development Manager
- Jodi Austin – Communications Officer
- Amanda Leonard – Projects Officer
- David O'May – Project Manager
- Simon Williams – Geolink
- Meagan - Geolink

Workshop agenda

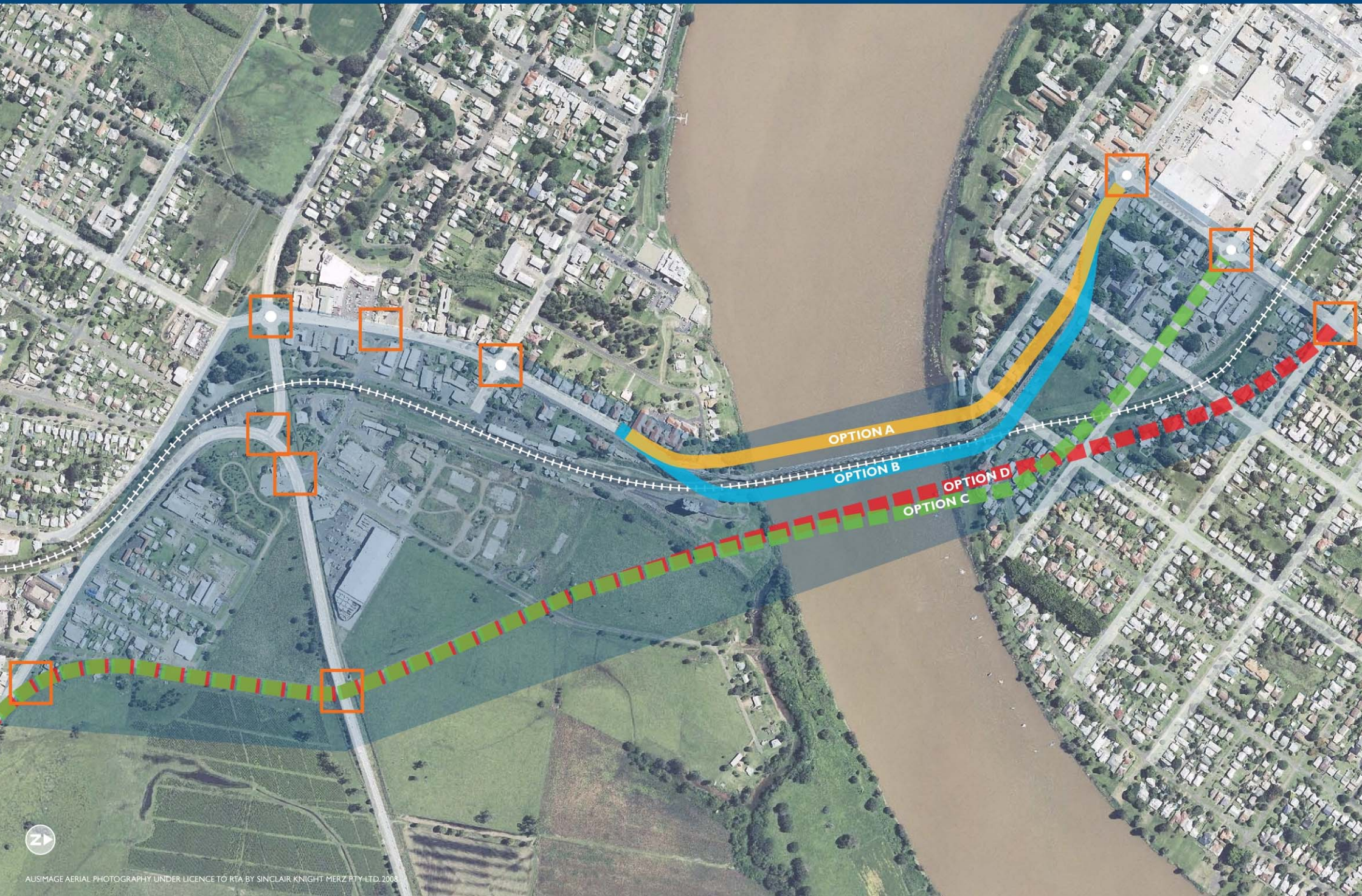


Activity	Time
Introductions – Rob van Ieresel	6.30
Workshop objectives – Damien Sartori	6.35
Overview – Damien Sartori	6.45
Project objectives – Stephen Williamson	6.50
Summary of traffic modelling – Stephen Williamson	6.55
Activity – identify issues/values – Rob van Ieresel	7.00
Simulations – Stephen Williamson	7.20
Summary of values – Rob van Ieresel	7.25
Group table discussions – community participants	7.30
Summary of table discussions – table nominee	8.20
Where to from here? – Rob van Ieresel	8.30

Workshop objectives

- To identify key issues of interest for each participant.
 - Examine each preliminary option in relation to issues identified.
 - Examine possibilities for changes to preliminary options within the study area.
-

Additional Clarence River crossing – preliminary options



Q: Why is the RTA starting this process when no money for construction?

A: It is the next step in the planning process to identify a corridor and to place on Councils LEP.

Q: Is the RTA solely focused on finding an option within the study area?

A: Yes

Q: When will the RTA decide on a preferred option?

A: Target date is the end of 2010.

Additional Crossing of the Clarence River

- Improve traffic efficiency between and within Grafton and South Grafton.
 - Enhance safety for all road users over the length of the project.
 - Support regional and local economic development.
 - Involve all stakeholders and consider their interests.
 - Provide value for money.
 - Minimise impacts on the environment.
-

Traffic summary

- Current traffic flow- between South Grafton and Grafton
 - Future traffic flow- between South Grafton and Grafton
 - Future traffic growth predicted to double approximately 50,000 vpd
 - Congestion to increase in Bent Street and Fitzroy Street
 - Heavy vehicles need to access the town
 - Further from the current crossing the less benefit to all users
 - The network is currently constrained and operating beyond capacity in peak times
 - Therefore additional options C and D where developed
-

Activity



- Each participant needs to identify three key issues/ values and write them on sticky note paper.
- The project team will collect these from each person and place on the wall.

Traffic modelling - simulated display





Summary of issues/ values

Group discussions

1. Examine the preliminary options in South Grafton and then Grafton.
 - List advantages and disadvantages
 - Constraints?

 2. Are there combinations these or other options in the study area?
 - List advantages and disadvantages.
 - Constraints?

 3. Provide a summary of issues to the larger group
-



Where to from here?

RELEASE TRAFFIC STUDY REPORT (2009)

PRELIMINARY INVESTIGATION
Additional traffic studies
and development of four preliminary options

WE ARE HERE
PUBLIC COMMENT ON THESE
PRELIMINARY OPTIONS AND OTHERS

PRELIMINARY ENVIRONMENTAL INVESTIGATIONS
Engineering and social options including considerations
of community comments and refinement inputs/
adjustment of the preliminary options

DISPLAY CONCEPT ROUTE OPTIONS
Community feedback invited on development route options

PUBLIC
SUBMISSIONS

REPORT ON FIELD
INVESTIGATIONS

VALUE
MANAGEMENT
WORKSHOP

RTA PREFERRED ROUTE SELECTION PROCESS

CONSIDERATION AND DECISION BY THE RTA
AND THE MINISTER FOR TRANSPORT AND ROADS
ON THE PREFERRED ROUTE