

## Closure of Ballina Street Bridge on the Bruxner Highway, Lismore, for night work from Monday 29 May

### Roads and Maritime Services will carry out essential repair work on Ballina Street Bridge.

The work is needed to repair damage caused when a truck carrying an excavator struck the cross beams last year.

Due to high traffic volumes on the bridge and to minimise impacts on the community, we will carry out the work at night and on weekends.

**The bridge will be closed during night work to minimise the impacts on the community and for the safety of the public and our workers. The bridge will reopen outside work hours.**

#### Night work

We will be working between **7pm** and **5am** on the following nights, weather permitting:

- **Monday 29 May**
- **Tuesday 30 May**
- **Monday 5 June**
- **Tuesday 6 June**
- **Wednesday 7 June (if required).**

#### Traffic changes

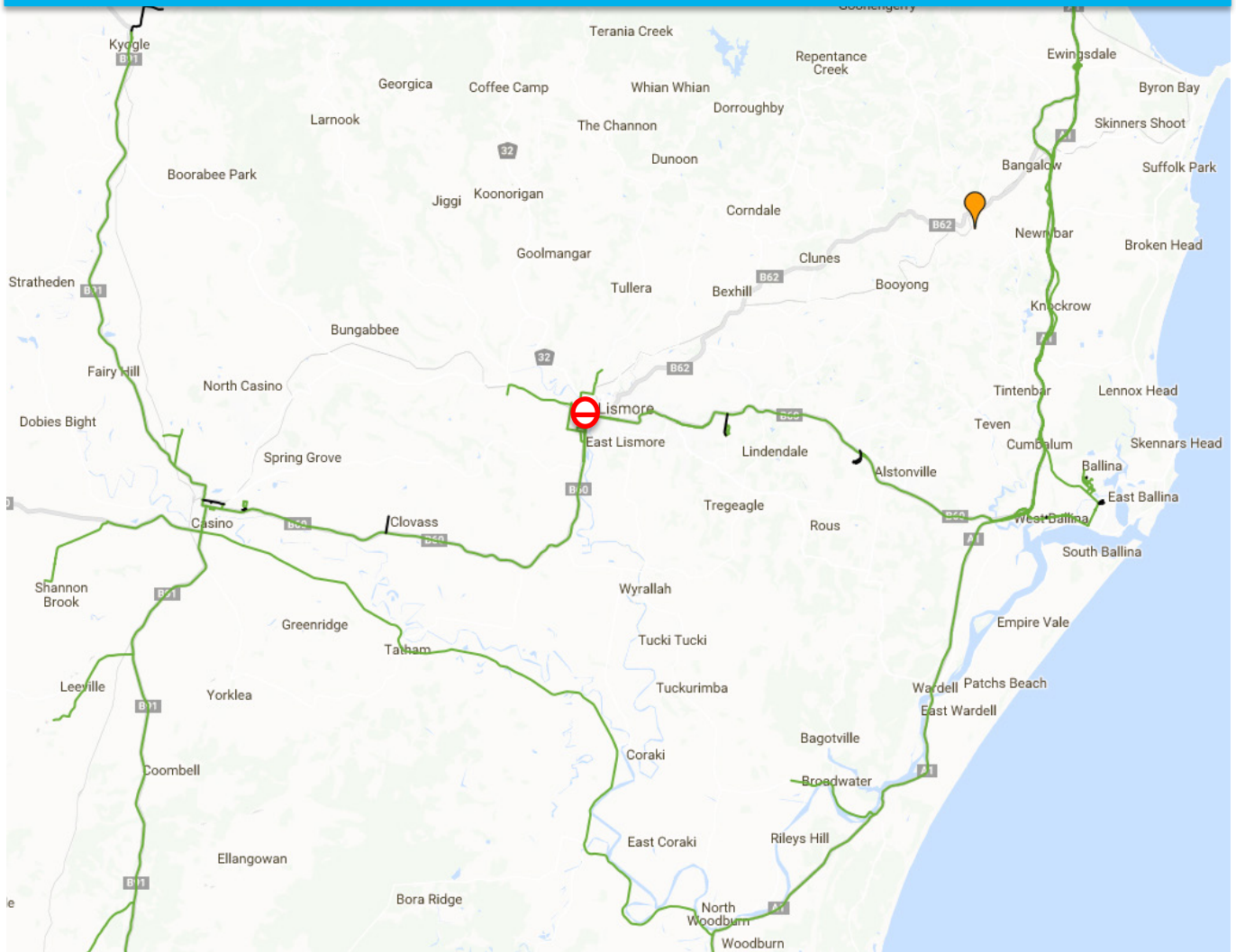
A detour will be in place. **Please note the detour is restricted to vehicles up to 33 tonnes and up to 4.5 metres in height.** We have included maps to show the location of the work, the detour for suitable vehicles and the approved alternative B-double routes. For B-doubles, de-coupling areas are located either side of the bridge. We have included these areas in the maps.

Vehicles exceeding these limits will need to use alternative routes, noting the alternative detours may add up to 90 minutes travel time. Heavy vehicle operators and drivers are encouraged to consider their travel on these dates and plan their journey. Restricted access vehicles, including B-doubles and vehicles over 4.3 metres high, should find an alternative approved route on the relevant network map at [rms.nsw.gov.au/hv-maps](http://rms.nsw.gov.au/hv-maps). For the latest traffic information always check Live Traffic at [www.livetraffic.com](http://www.livetraffic.com).

#### Contact

If you have any questions please contact our Project Manager, Mosese Verevakabau, on 131 782 or [Mosese.K.Verevakabau@rms.nsw.gov.au](mailto:Mosese.K.Verevakabau@rms.nsw.gov.au).

## Ballina Street Bridge repairs – 25/26m B-double and 4.6m high route



### Key



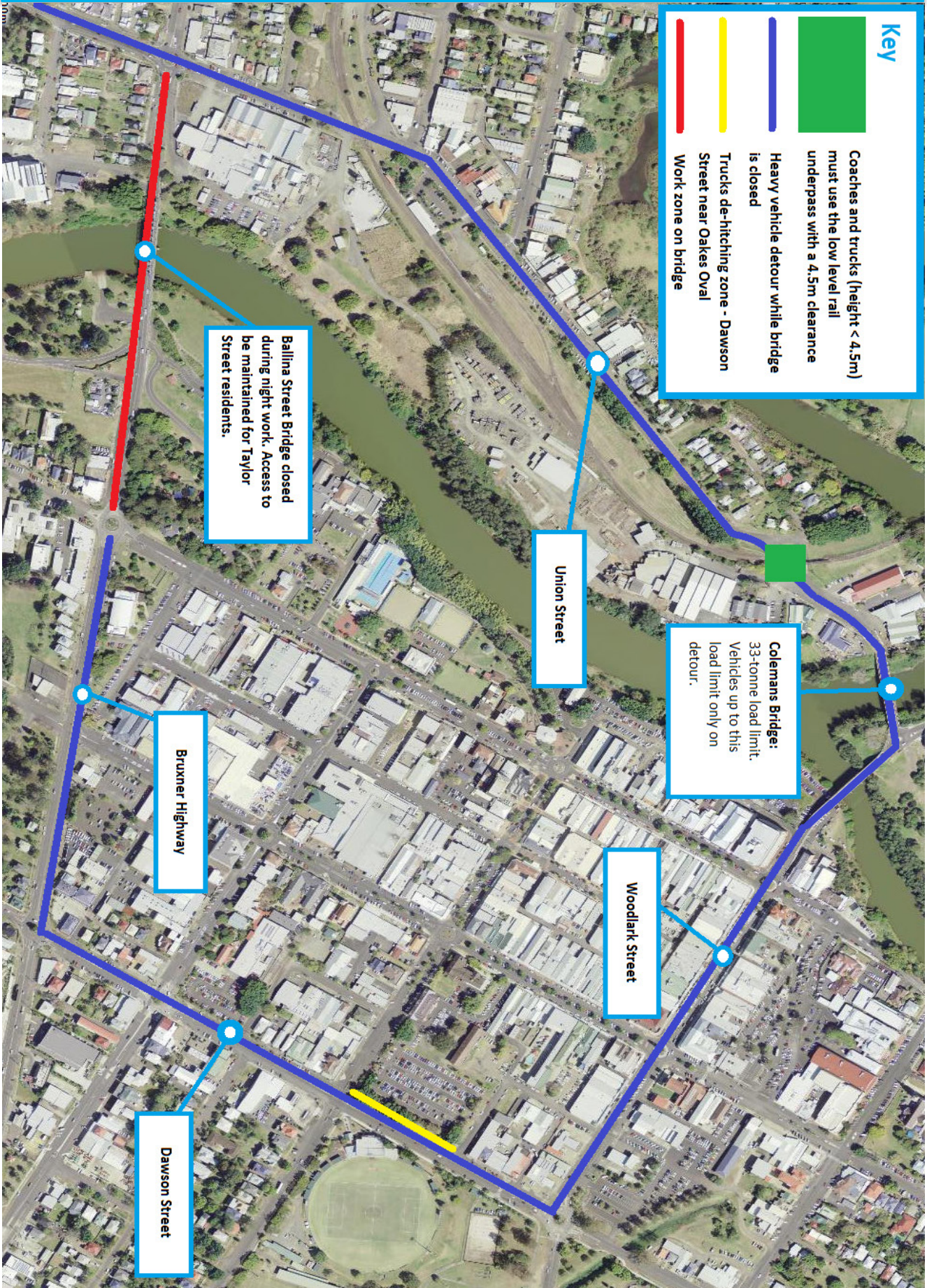
**Bridge closed at this location in Lismore between 7pm and 5am on Monday 29, Tuesday 30 May, Monday 5 June and Tuesday 6 June**

**25/26m B-double and 4.6m high route**

**Note:** Vehicles exceeding 4.5 metres in height and 33 tonnes will need to use the alternative route. Accordingly, vehicles needing to access East Lismore from the west need to travel via Woodburn and Alstonville. Vehicles needing to access West Lismore from the east need to travel via Woodburn and Casino. These detours will add about 90 minutes to journeys.

Source: <http://www.rms.nsw.gov.au/business-industry/heavy-vehicles/maps/restricted-access-vehicles-map/map/index.html>

# Ballina Street Bridge repairs – detour and de-coupling area



## Key

- Coaches and trucks (height < 4.5m) must use the low level rail underpass with a 4.5m clearance
- Heavy vehicle detour while bridge is closed
- Trucks de-hitching zone - Dawson Street near Oakes Oval
- Work zone on bridge

Ballina Street Bridge closed during night work. Access to be maintained for Taylor Street residents.

Union Street

**Colemans Bridge:**  
33-tonne load limit. Vehicles up to this load limit only on detour.

Woodlark Street

Brunner Highway

Dawson Street

# Ballina Street Bridge repairs de-coupling area

