

Sportsmans Creek new bridge



Transport
Roads & Maritime
Services

JULY 2014

COMMUNITY UPDATE



The preferred option for a new bridge over Sportsmans Creek at Lawrence has been announced.

Background

The existing Sportsmans Creek bridge is located at the southern approach to Lawrence on Bridge Street, which connects to the Grafton-Lawrence Road. Due to its geometry and design limitations, the existing bridge is unable to be cost-effectively serviced and upgraded in order to cater for the future haulage requirements of the surrounding agricultural industries, local traffic and pedestrian access.

The NSW Timber Truss Bridge Conservation Strategy considered the suitability of the 48 remaining timber truss bridges. The Sportsmans Creek bridge would be removed and replaced with a new structure. Roads and Maritime Services has worked with Clarence Valley Council and the local community to identify a preferred placement bridge location.

Following the identification of a shortlist of options, one option became clearly preferable and delivered the most benefits.

In November 2013, Roads and Maritime displayed the recommended option for the new Sportsmans Creek bridge for community comment. This option is detailed in the *Recommended Options Report* (November 2013).

Drop in sessions were held in mid-December 2013 to gather community input on the recommended option. The feedback was summarised into a *Community Feedback Report*, available on the project website.

Following the community display further technical and environmental studies were carried out on the recommended option including geotechnical and field investigations, and noise monitoring.

Current status

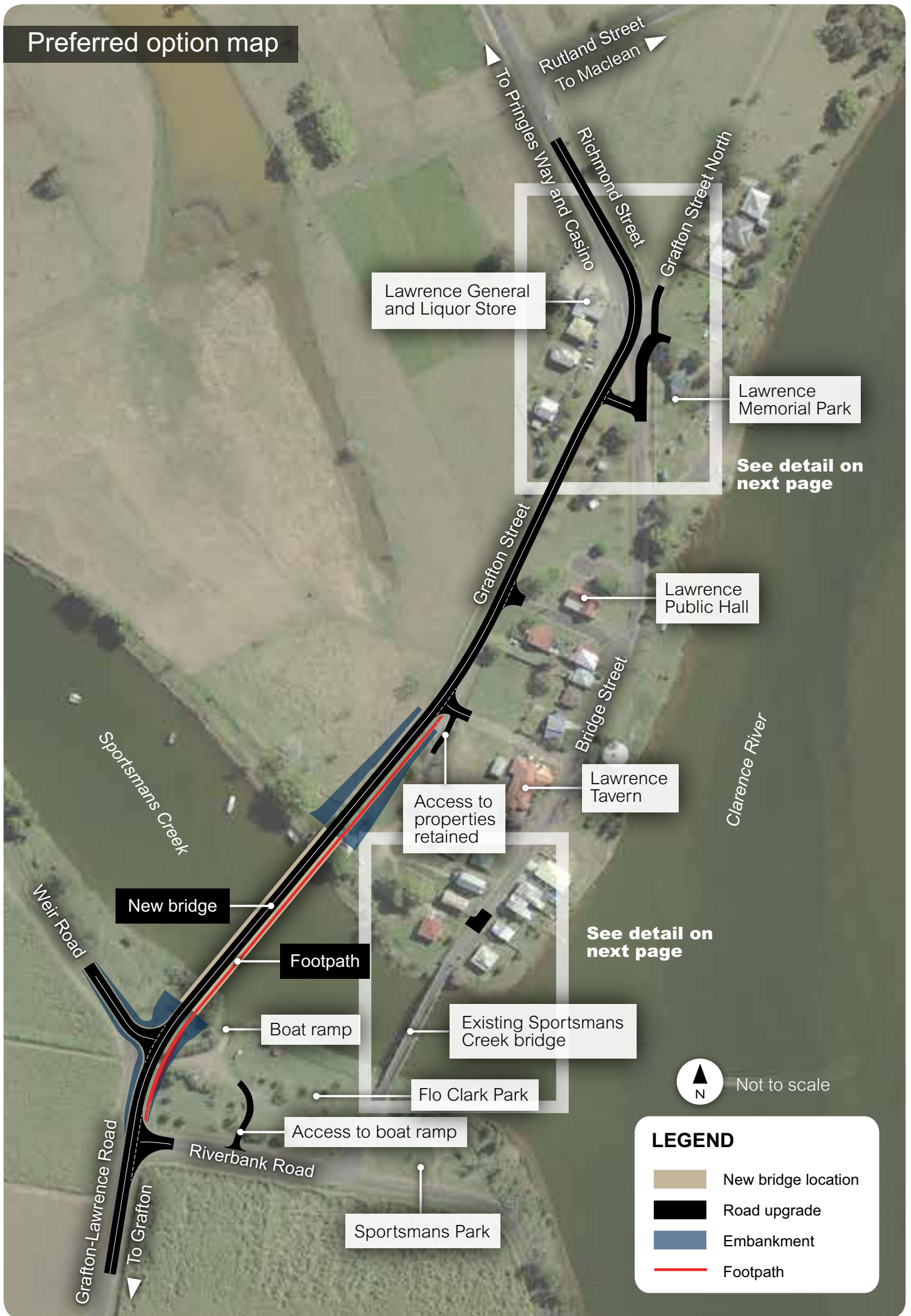
The recommended option displayed in November-December 2013 has been confirmed as the preferred option. This option includes a new bridge west of the existing Sportsmans Creek bridge and boat ramp. It connects the Grafton-Lawrence Road with Bridge Street via Grafton Street.

Input was also invited on two potential treatments for the intersection of Grafton and Bridge streets. Following consideration of community input and the outcomes of investigations, a refined Option B intersection treatment has been chosen. This option involves a minor realignment of Grafton Street to form a through route from Grafton Street to Richmond Street. See maps overleaf.

The preferred option has been considered and approved by the Minister for Roads and Ports. The preferred option is also shown on the map inside.

The next step is to conduct an environmental impact assessment and obtain relevant approvals before detailed design and construction.

Preferred option map



See detail on next page

See detail on next page

North arrow
N
Not to scale

LEGEND

- New bridge location
- Road upgrade
- Embankment
- Footpath

Proposed intersection treatments



Preferred option

The preferred option is to build a new bridge west of the existing Sportsmans Creek bridge and boat ramp, connecting Grafton-Lawrence Road with Grafton Street. It includes a realignment of Grafton Street to form a through route from Grafton Street to Richmond Street.

This option considered community feedback received and provides a wide arc past the Lawrence General and Liquor Store, allowing safe vehicle movements around this area. Bridge Street access to Grafton Street would be maintained however the Grafton Street north connection will be from Bridge Street only to improve road safety.

The existing bridge will be removed after the new bridge is built.

Benefits of this option

- Connects existing roads, reducing the scale of the proposal
- Maintains passing trade for local businesses
- Connects Flo Clark Park and Sportsmans Park by removing the existing southern approach
- Avoids disruption to the boat ramp and allows new access for sail boats
- Delivers value for money
- Minimises impact on natural wetlands
- Reinforces original town plan
- Reduces impact on the heritage conservation area.

The bridge would be designed to meet the requirements for safe marine navigation, and comply with relevant environmental and planning legislation. It would provide pedestrian/cyclist access as well as vehicular access across Sportsmans Creek.



Ongoing community involvement

Project information will be on display at the following locations:

Lawrence General and Liquor Store

Richmond Street, Lawrence

Roads and Maritime Regional Office

76 Victoria Street, Grafton

Clarence Valley Council Offices

2 Prince Street, Grafton

50 River Street, Maclean

www.rms.nsw.gov.au/roadprojects

(Sportsmans Creek - Lawrence)

Next steps

Copies of the project documents are available online or by contacting the project team.

The next step is to prepare an environmental impact assessment and obtain relevant approvals before starting detailed design and construction.

For more information please contact the project team at:

Phone: 1800 035 016 (toll free)

Email: sportsmanscreeknewbridge@kbr.com

Web: www.rms.nsw.gov.au/roadprojects

Post: Sportsmans Creek new bridge project
Reply Paid 633
Brisbane QLD 4001



Australian made



carbon neutral



recycled



carbon neutral paper

This paper is • carbon neutral • Australian made • recycled fibre • elemental chlorine free • pulp derived from sustainably managed sources

Privacy: Roads and Maritime Services is subject to the Privacy and Personal Information Protection Act 1998 (or PPIP Act) which requires that we comply with the Information Protection Principles set out in the PPIP Act.

All information in correspondence is collected for the sole purpose of assisting in the assessment of this proposal. The information received, including names and addresses of respondents, may be published in subsequent documents unless a clear indication is given in the correspondence that all or part of that information is not to be published. Otherwise Roads and Maritime will only disclose your personal information, without your consent, if authorised by the law. Your personal information will be held by Roads and Maritime at 31 Victoria Street, Grafton NSW 2460. You have the right to access and correct the information if you believe that it is incorrect.