



Transport for NSW

# The new Tabulam bridge

Project update



Construction of the new Tabulam bridge over the Clarence River

The new Tabulam bridge is now open to traffic. Despite the challenges over the last year with bush fires, flooding and Covid-19 impacting the project, the bridge is now complete and finishing works will continue over the coming months.



## Removing the existing bridge

Now that the new bridge is complete and opened to traffic, removal of the existing bridge will soon start.

Removal of the existing bridge is expected to take around five months, weather permitting.

Transport for NSW (TfNSW) acknowledges that the existing Tabulam Bridge is of historical importance to the local community and is committed to honouring the memory of the bridge.

As part of honoring the memory of the existing bridge, the project team is exploring the possibilities of displaying small elements from the existing bridge at Casino and Tenterfield museums and Tabulam Public School.

Consultation with these stakeholders, including Kyogle and Tenterfield councils are continuing.



## Repurposing the old

TfNSW contracts timber recycling businesses to recycle timbers removed from State bridges. Old timber recovered from the demolition or maintenance of timber bridges often contain timber preservatives such as insecticides, bitumen or paint residues. A similar process will be adopted to the Tabulam Bridge.



## Remembering the old

TfNSW has committed to remembering the existing bridge by:

- incorporating a representation of the existing timber truss on the new bridge
- retaining the piers of the existing bridge in the river
- providing a viewing area and landscaping on the eastern bank of the Clarence River looking across the alignment of the old bridge, with information containing historical details of the existing timber bridge through interpretive signage
- keeping archival photographic records that are stored in the State Library in Sydney and other key agencies.

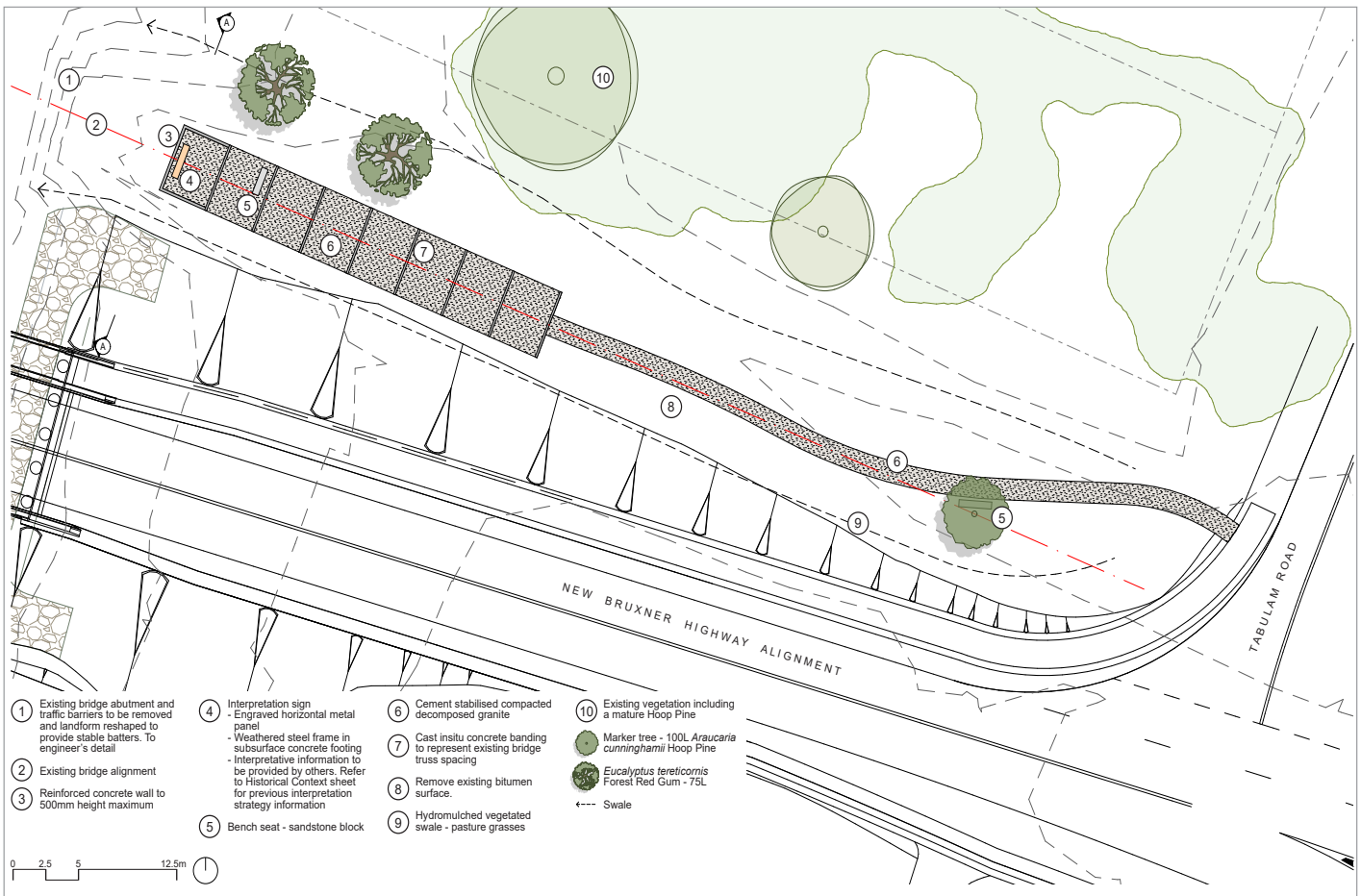
The project team is working with key stakeholders to develop content for the interpretive sign that will be located on the viewing platform in the park area.



**The existing timber bridge will be removed after the new bridge is completed**



**Timbers from the old bridge will be recycled**



Draft landscape design of the viewing area



## Park area and landscaping

The viewing area is located near the approach of the existing bridge on the eastern side of the river and is visible from the new bridge.

The area will include a raised platform with views of the existing bridge piers in the Clarence River, a sign with historic information about the old Tabulam Bridge, seating and feature trees.

A Hoop Pine tree was proposed to be a feature of the new park area. However during consultation with key stakeholders, council has indicated another native species may be more appropriate. We are now seeking your feedback on what feature tree you would like to see in the park area.

Elements of the viewing area have been designed to reference the key dimensions of the de Burgh Truss spans of the existing bridge. For example, the overall footprint for the viewing area platform is the same dimensions of a truss span.



Artists impression of the viewing platform



View to the east from the new bridge abutment

## Whats next?

Now that the new bridge is operational, finishing works will continue including landscaping, development of content for the interpretive signage in the park area and preparation for removal of the old bridge.

We will be collecting memories, photos and art work of the existing bridge in Tabulam to include in our commemorative material for the project.

### Contact us:

For more information about this project:

 1800 314 530 (toll free)

 [tabulambridge.community@georgiou.com.au](mailto:tabulambridge.community@georgiou.com.au)

## Thank you

We appreciate that the community has been patient during construction works and are excited to see the new bridge opened to traffic. Due to Covid-19 and the uncertainty around gatherings, the project team will not hold a community day for the opening of the bridge but will delay it until the park area is complete and there is more certainty around the evolving Covid-19 situation.



The existing timber truss bridge

## Tell us your story



We will be collecting memories, photos and art work of the existing bridge in Tabulam to include in a commemorative booklet for the project. If you have a story to share or a special photo, we would love to hear from you. You can email your memories through to the project team on the details found at the bottom of this community update by **27 September 2020**.



This document contains important information about Transport projects in your area. If you require the services of an interpreter, please contact the Translating and Interpreting Service on 131 450 and ask them to call Transport Projects on 1300 679 842. The interpreter will then assist you with translation.