

# Nowra Bridge project



Project update | September 2022



## What we've been doing

Work over the last few months has included:

- Constructing the final segment of the bridge deck and launching across the river. The bridge now spans 360 metres across the Shoalhaven River
- Continuing works to remove the temporary rock platform in the Shoalhaven River
- Dismantling the casting yard on the southern side of the Shoalhaven River
- Installing drainage, pavement, landscaping, and kerb and gutter
- Pouring final stages of the bridge deck for Bomaderry Creek Bridge, including the connection to the existing bridge
- Undertaking asphaltting works on Shearwater Way, Lyrebird Drive, Illaroo Road, Princes Highway and Bomaderry Creek Bridge, and preparing for traffic changes

## Upcoming work

Work over the coming months will include:

- Pavement works at the intersection of the Princes Highway and Bolong Road
- Traffic moving onto the new section of Bomaderry Creek Bridge
- Opening the new local road, Shearwater Way
- Installing street lighting, signage, landscaping, and kerb and gutter
- Continuing to prepare the new Nowra Bridge to open to traffic
- Earthworks on the southern side of the Shoalhaven River



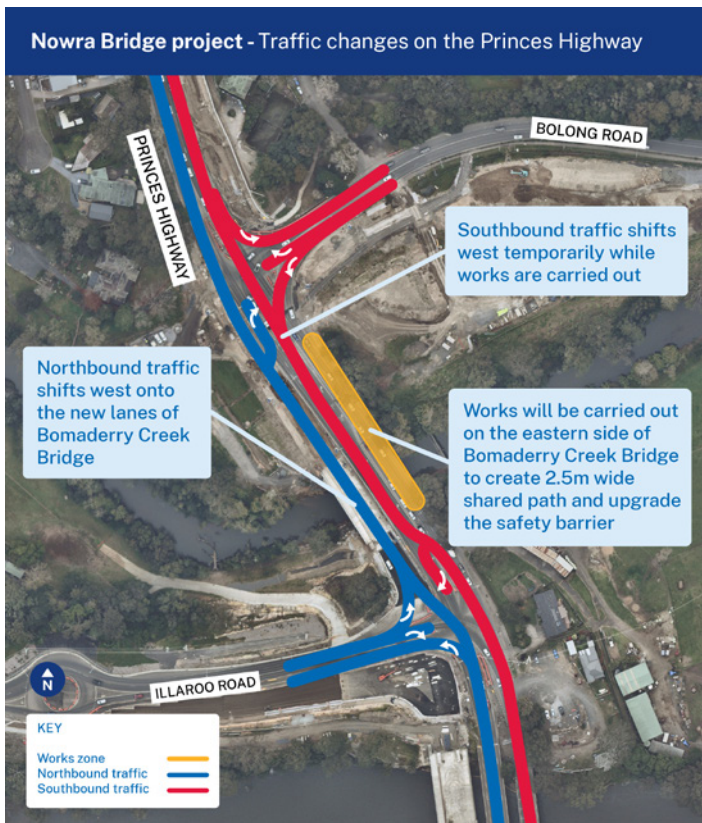
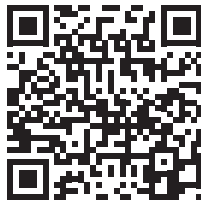
## Upcoming changes on the Princes Highway between Bolong Road and Illaroo Road

The widening of Bomaderry Creek Bridge is now complete and in the coming weeks, traffic on the Princes Highway will be shifted west between Bolong Road and Illaroo Road while we continue work on the eastern side of the Princes Highway.

Northbound traffic will move onto the new lanes of Bomaderry Creek Bridge and southbound traffic will move west temporarily. Traffic signals at the intersections with Bolong Road and Illaroo Road will also be shifted during this time. Access in and out of Bolong and Illaroo Roads will be maintained.

This allows us to construct an upgraded 2.5m shared path on the eastern side of the Princes Highway, including an upgrade to the safety barrier on Bomaderry Creek Bridge. Pedestrian access will be maintained during this work but there may be some temporary changes.

Scan the QR code to watch a video explaining the upcoming changes.



## A major milestone: Touchdown on the northern foreshore

Almost 12 months since the first bridge deck segment was poured in the casting yard, that same segment has now touched down on the northern foreshore. After having been pushed more than 360 metres, the bridge now spans the Shoalhaven River.



## Old Nowra Bridge: Summary of feedback published

Thank you for your feedback! More than 1,200 people made submissions as part of a community consultation on the future of the historic Nowra Bridge. Feedback included wide ranging suggestions on how best to preserve and respect the heritage of the bridge, as well as explore opportunities the bridge offers for the local community and tourism.

The report will be used to inform a final plan for the historic landmark's rehabilitation and a detailed environmental assessment. The Review of Environmental Factors will be published together with the repurposing proposal in 2023.

To view the full report, visit [nswroads.work/OldNowraBridge](https://nswroads.work/OldNowraBridge)



# Reconciliation Week on the Bridge

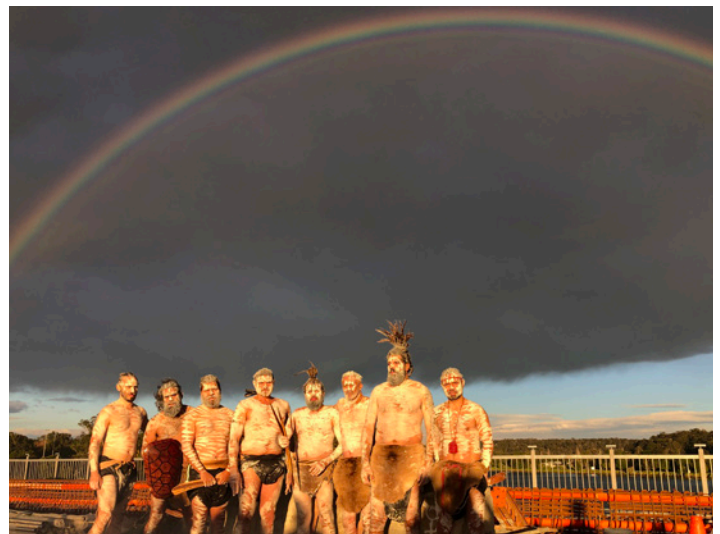
After the new Nowra Bridge touched down on the northern side of the Shoalhaven River, we took a moment to acknowledge and celebrate the connection the bridge creates between Aboriginal lands.

As the sun rose, the Wodi Wodi people and the Wandiwandian people walked from opposite ends of the bridge to meet in the middle.

When asked to recall the morning, Nowra Bridge Project Manager Ryan Whiddon commented, “We were humbled to share the moment and provide community with the space to celebrate the milestone on their terms. It just so happened that this milestone occurred during Reconciliation Week, which is a time for all of us to learn about our shared histories, cultures, and achievements, and to explore how we can all contribute to reconciliation.”

Followed by Transport and Fulton Hogan staff, the two mobs from each end of the bridge moved towards the middle. As flocks of cockatoos awoke and flew overhead, a full rainbow formed arching across the river.

In the morning light, the mobs danced together, a smoking ceremony was held and we were welcomed to Country.



## Building the new bridge

Temporary rock platform

Piles

Piers

Launch nose

Span segments

Finishing work

Road surface

Abutments

The new Nowra Bridge is now resting in its final position, spanning across the Shoalhaven River. The launch nose, the large steel structure connected to the front of the bridge, has been removed. Work is now focused on ‘locking’ the bridge into position. This involves lifting the bridge at each pier, removing the temporary sliding pads, then welding the bearings to secure them in place. Next steps involve dismantling the casting yard near Scenic Drive, removing the rock platform from the river, building up the abutments and constructing the new road approaches.



Left: The launch nose about to be dismantled having reached the northern foreshore.  
Right: Sunrise view of the bridge and the rock platform from the casting yard.

### Students welcomed onsite

We recently welcomed groups of local high school students to the Nowra Bridge project site. The students, ranging from year 10 to year 12, attend schools in the Shoalhaven area and are eager to learn more about a career in civil construction.

The students met with project leaders to learn about the scope of works, the types of skills and people required to complete the work, and how many truck loads of concrete have been used to build the bridge deck (it's over 1,100!).

They were also taken on a site tour and walked along the existing bridge to see construction progress of the new bridge. The students and their teachers were blown away by the proportions of materials used on a project of this scale.



Over 1,800mm of rainfall on site since January 2022



800,000 hours worked



14,000 tonnes of asphalt used



2,000 workers inducted to site

### Contact us



1800 331 713



NowraBridgeProject@fultonhogan.com.au



nswroads.work/nowrabridge



Nowra Bridge project  
PO Box 477 Wollongong NSW 2520

### Turn back time

Inspired by their predecessors who built the original Nowra Bridge in 1881, the 2022 Nowra Bridge project team posed for a photo on the foreshore of the Shoalhaven River with the new Nowra Bridge behind them. They take their roles very seriously and even took a moment to dress up as if it were 1881 all over again. What we wear to work has changed, but the team spirit hasn't!

