

Nowra Bridge Project



OCTOBER/NOVEMBER 2014



Have your say on the old Nowra Bridge

Planning is now underway for a new bridge over the Shoalhaven River in Nowra. Once open, highway traffic will be transferred off the old Nowra Bridge.

Why do we need a new bridge

1. Increasing maintenance difficulties with the old Nowra Bridge
2. Increasing traffic congestion in peak times from local traffic
3. Some large and heavy trucks cannot use the old Nowra Bridge
4. High risk of damage and closure of the old Nowra Bridge from an impact by over height vehicles
5. Increased demand and future traffic growth.



The old Nowra Bridge looking south

What is the future of the old Nowra Bridge?

No decisions on the future of the bridge have been made and we are looking to have a proposal ready in the first half of next year. To do this we need to look at the heritage value of the old Nowra Bridge and our responsibilities to conserve it, community input and ideas, and the cost and feasibility of potential outcomes.

Possible outcomes for the old Nowra Bridge could be:

- Retaining it
- Relocating it (whole or in parts)
- Removing it.



Intersection of the Princes Highway and Old Illaroo Road at Nowra

Have your say

What does the old Nowra Bridge mean to you?

Do you have ideas on what the bridge could be used for or how it could be remembered if removed?

[Take our online survey](#)

We want to talk to you

During October and November the project team will be at a number of locations and events in the area to talk to you about the possible options.

Come talk to us at our information displays:

Saturday 25 and Sunday 26 October - Shoalhaven River Festival

Wednesday 12 November - North Nowra Community Centre, 5pm to 7.30pm

Saturday 22 November - Nowra School of Arts, 10am to 1pm

Submit your feedback by post, email, 1800 information line or Facebook

We will be taking ideas, feedback and formal submissions on potential options until **Friday 19 December 2014**.



Find us on facebook at facebook.com/PrincesHighwayUpgrade
QR code smart phone scan. Learn more about the Nowra Bridge Project at:
rms.nsw.gov.au/nowrabridge

1 800 331 713 (free call)

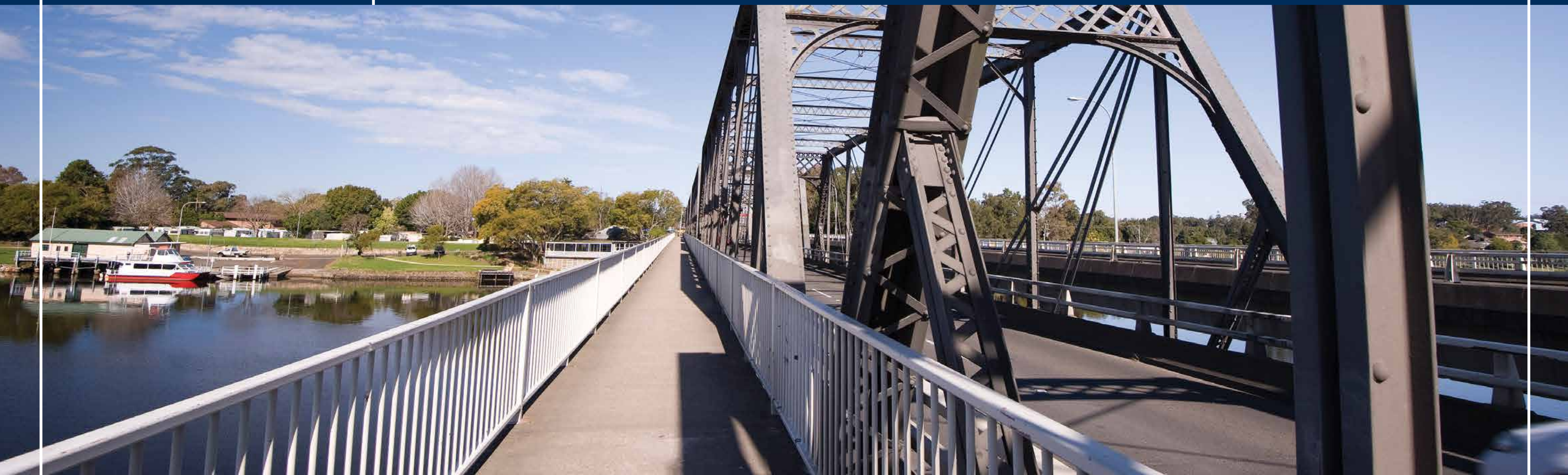
@ NowraBridgeProject@rms.nsw.gov.au

✉ Nowra Bridge Project, PO Box 477 Wollongong NSW 2520

Nowra Bridge Project



OCTOBER/NOVEMBER 2014



Future of the old Nowra Bridge

A decision needs to be made on the future of the old Nowra Bridge and we are looking to have a proposal ready in the first half of next year.

Possible outcomes for the old Nowra Bridge could be:

- **Retaining it**
 - The bridge could be refitted for a variety of different uses
 - To carry light traffic a replacement of the deck would be needed
 - Once repaired the bridge could be continually maintained
 - We would like to hear your thoughts on how the bridge could be used.
- **Relocating it (whole or in parts)**
 - This would see parts of the bridge relocated to preserve its history
 - Relocation would occur after the new bridge is built
 - Some maintenance would be needed until this happened
 - Extra care would be needed not to damage the bridge during relocation
 - We would like to hear your thoughts on how the bridge could be re-used elsewhere.
- **Removing it**
 - This would see the old Nowra Bridge removed completely and would only be considered if no other feasible option can be found
 - Removal would occur after the new bridge is built
 - Some maintenance would be needed until this happened
 - We would like to hear your thoughts on how the bridge could be remembered.



Potential costs for retaining or removing the old Nowra Bridge

The costs outlined below are early planning estimates that need further investigation. There is a large range of costs for each outcome as there are a number of variables that are still unknown.

Retain	Relocate / Remove
Could cost between \$15–\$25 million	Could cost between \$10–\$20 million
Pier strengthening <input checked="" type="checkbox"/>	Pier strengthening <input type="checkbox"/>
Investigate pin joints <input checked="" type="checkbox"/>	Investigate pin joints <input type="checkbox"/>
Fix damage from heavy vehicle impacts <input checked="" type="checkbox"/>	Remove <input checked="" type="checkbox"/>
Remove corrosion and check condition of bearings <input checked="" type="checkbox"/>	
Repainting <input checked="" type="checkbox"/>	
Strengthening of remaining piers – if needed <input type="checkbox"/>	Relocate and re-use <input type="checkbox"/>
Replace pin joints – if needed <input type="checkbox"/>	
Replace bridge deck – if needed <input type="checkbox"/>	
Additional costs	
Annual maintenance – around \$15 million over 50 years	Nil – assuming there is no ongoing maintenance cost after the bridge is removed and/or relocated and re-used.

KEY
 = required maintenance included in estimated costs. = work subject to further investigation - not included in cost estimate.

Developing the proposal

To assist in the decision making process we will need to consider:

- The heritage value of the bridge and our responsibilities to conserve it
- Ideas, feedback and submissions collected
- Cost and feasibility of the various options
- Community value of the bridge.

We hope to have a proposal for the old Nowra Bridge ready in the first half of 2015.



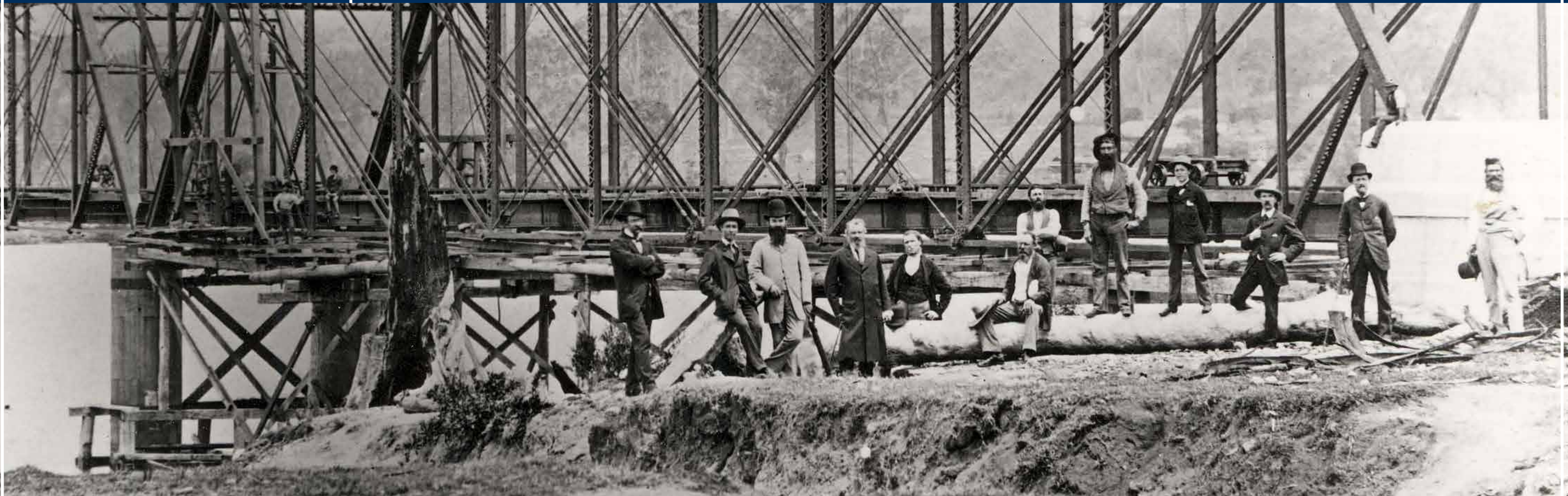
Find us on facebook at facebook.com/PrincesHighwayUpgrade
 QR code smart phone scan. Learn more about the Nowra Bridge Project at:
rms.nsw.gov.au/nowrabridge

1 800 331 713 (free call)
 @ NowraBridgeProject@rms.nsw.gov.au
 Nowra Bridge Project, PO Box 477 Wollongong NSW 2520

Nowra Bridge Project



OCTOBER/NOVEMBER 2014



The old Nowra Bridge during construction.

Historical and community significance

The old Nowra Bridge is 133 years old. We understand that its importance may not be limited to just its historical value and want to know what it means to you.

NSW Roads and Maritime Services Heritage and Conservation Register (Section 170)

Under the Section 170 listing, the old Nowra Bridge is listed as having state significance under each of the seven criteria below:

- Historical Significance
- Aesthetic / Technical Significance
- Social Significance
- Research Significance
- Rarity
- Representative of its type
- Integrity / Intactness.

Under this listing, Roads and Maritime has a responsibility to conserve the old Nowra Bridge for continued use in its existing location. If this is not feasible re-use should be investigated before removal is considered.

Roads and Maritime would need to notify the Heritage Council of any significant change to the structure, including changes to its use or its removal.

What does the old bridge mean to you?

Community input will be an important part of any proposed changes and we want to know what the old bridge and its setting on the Shoalhaven River really means to you.

We have developed an online survey that will help us understand your thoughts about the bridge. You can access the survey on the project website or on our Facebook page.

What we want to know

- How you feel about the bridge?
- What would you like to see happen to the bridge in the future?
- If you have ideas on what the bridge could be used for if it's retained or how it could be used or remembered if it's removed?



The old Nowra Bridge with trusses completed, around 1880.



The old Nowra Bridge during its construction, around 1880.



Find us on facebook at facebook.com/PrincesHighwayUpgrade
QR code smart phone scan. Learn more about the Nowra Bridge Project at:
rms.nsw.gov.au/nowrbridge

☎ 1 800 331 713 (free call)

@ NowraBridgeProject@rms.nsw.gov.au

✉ Nowra Bridge Project, PO Box 477 Wollongong NSW 2520

Nowra Bridge Project – Retaining the old Nowra Bridge

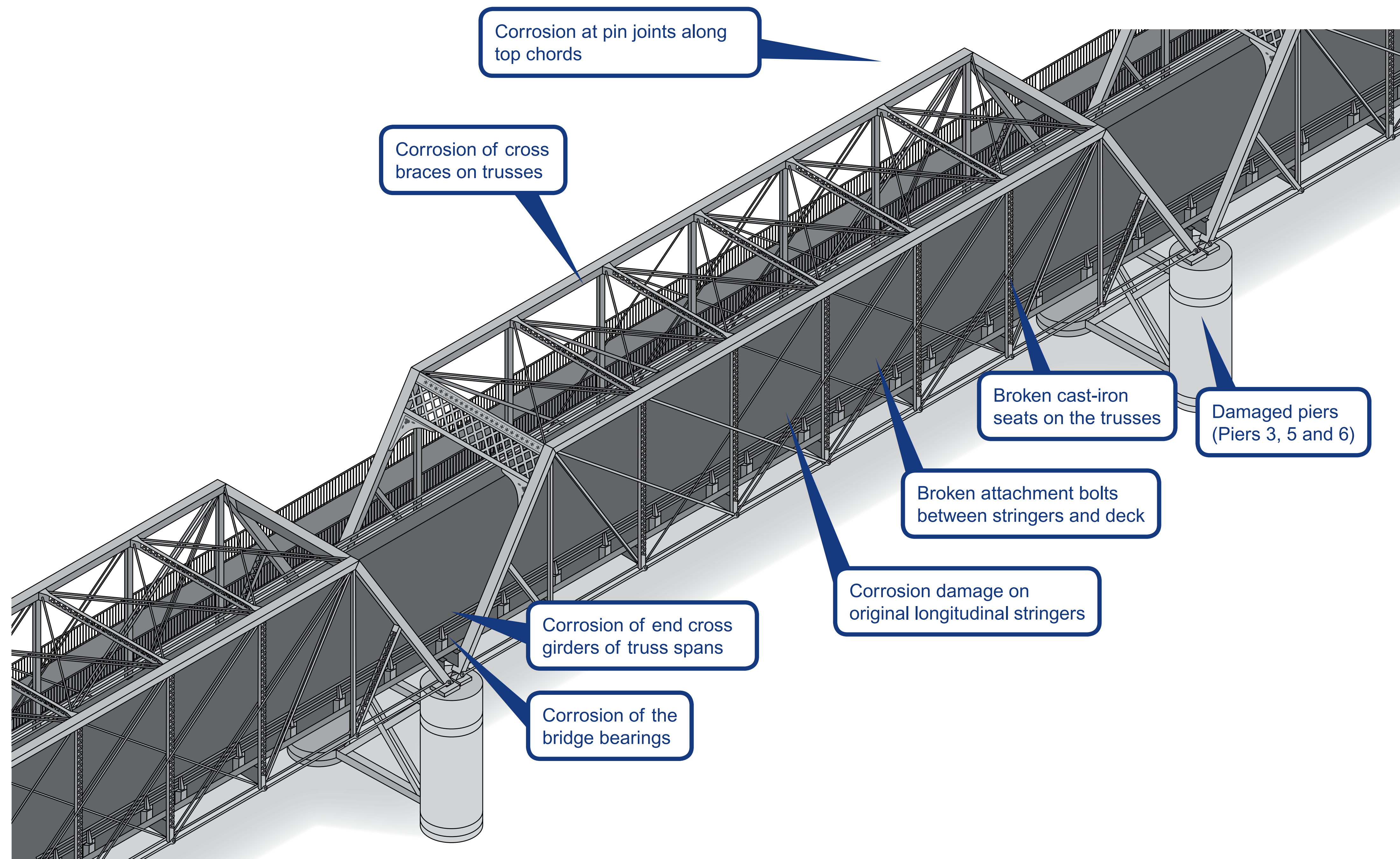
OCTOBER/NOVEMBER 2014

A number of parts of the old Nowra Bridge are worn or damaged due to general wear and exposure to the weather.

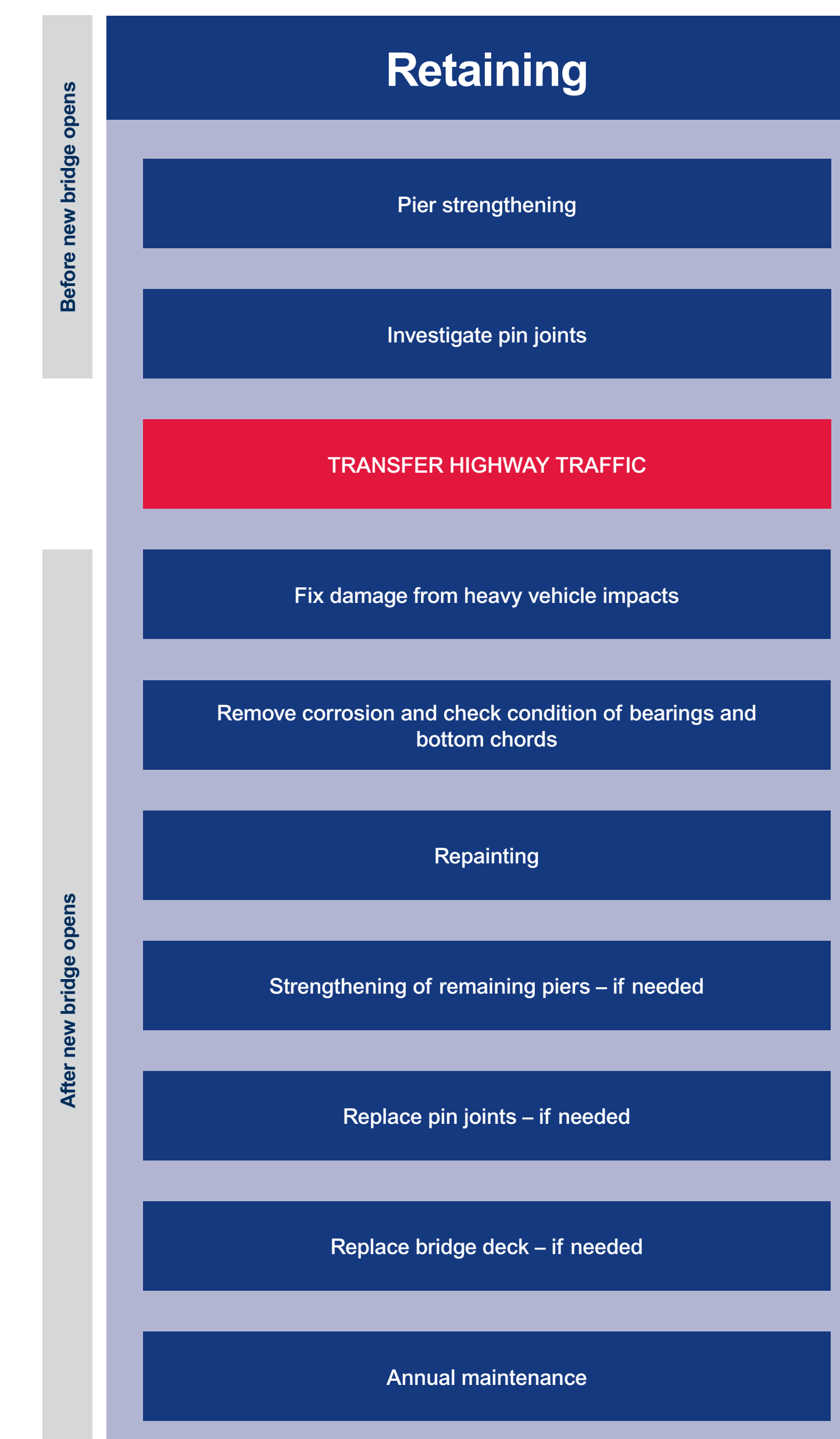
The diagram below shows the parts of the bridge that would require attention if we retained the bridge.

Once repaired the old Nowra Bridge could be used for light traffic, pedestrians and cyclists, or other uses.

By carrying out this work the life of the old Nowra Bridge would be extended and future maintenance costs reduced.



Process and timing of repair work



Find us on facebook at facebook.com/PrincesHighwayUpgrade
 QR code smart phone scan. Learn more about the Nowra Bridge Project at:
rms.nsw.gov.au/nowrabridge

☎ 1 800 331 713 (free call)
 @ NowraBridgeProject@rms.nsw.gov.au
 ✉ Nowra Bridge Project, PO Box 477 Wollongong NSW 2520

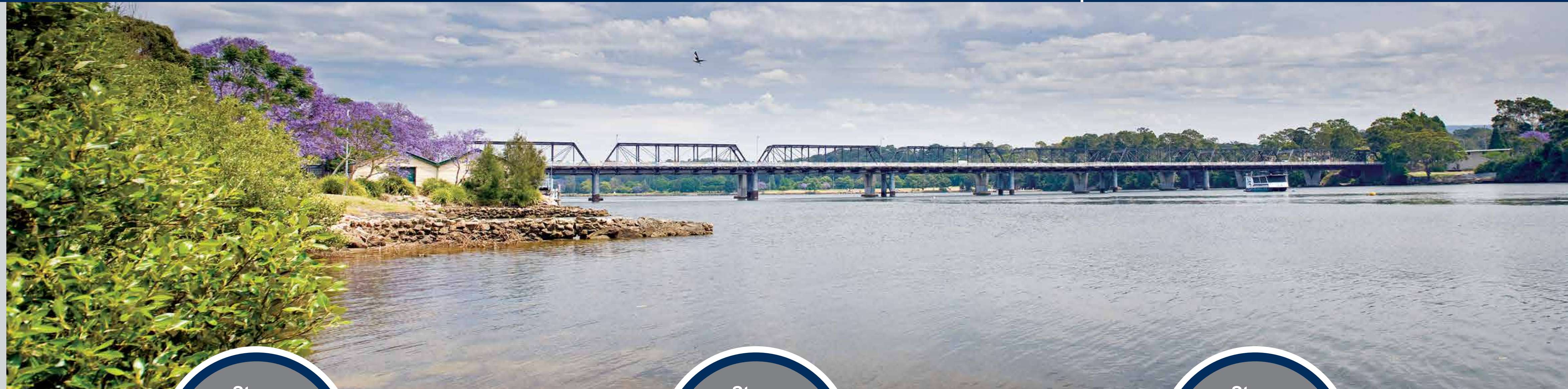
Nowra Bridge Project – Repainting and repairing the old Nowra Bridge

OCTOBER/NOVEMBER 2014

Repainting of iron truss bridges occurs about every 50 years and helps to:

- Prevent potential corrosion of the structure
- Preserve the look and structure of the bridge.

The old Nowra Bridge has around 13800 square metres of iron – the same area as about 2 football fields – that would be prepared and painted. If the old Nowra Bridge is kept, it will need regular maintenance of all iron trusses. Protecting the iron trusses from rust is one of the most important factors in the conservation of the bridge.



Stage

1

Setup



A number of platforms would be built to provide workers access to the iron structures beneath and above the bridge deck. The access platforms are contained by covering and sealing the work area with plastic to stop any spills into the water. An air extraction system would be installed to remove and filter all airborne particles from the work area, controlling dust and preserving air quality during work.

Stage

2

Abrasive blasting and surface preparation



Abrasive blasting is used to remove old paint, rust and other unwanted surface material so that it can be cleaned for painting. It is a commonly used process where small particles (like sand or walnut shells) are fired at high speed and pressure at the surface from the air-powered pressure gun. This activity is carried out in the contained work platform.

Stage

3

Repair of rusted areas and strengthening work



The bridge's surface is now clear and areas which need repair or strengthening are easily identified. Repairs and strengthening work can include repairing pins, damage caused by impact and bent diagonals. This process ensures the structural reliability of the bridge.

Stage

4

Repainting



Repainting is carried out using a pressurised spray gun within the contained work platforms to ensure that paint is not spilled into the water or travelling in the air.



Find us on facebook at facebook.com/PrincesHighwayUpgrade
QR code smart phone scan. Learn more about the Nowra Bridge Project at:
rms.nsw.gov.au/nowrabridge

☎ 1 800 331 713 (free call)

@ NowraBridgeProject@rms.nsw.gov.au

✉ Nowra Bridge Project, PO Box 477 Wollongong NSW 2520

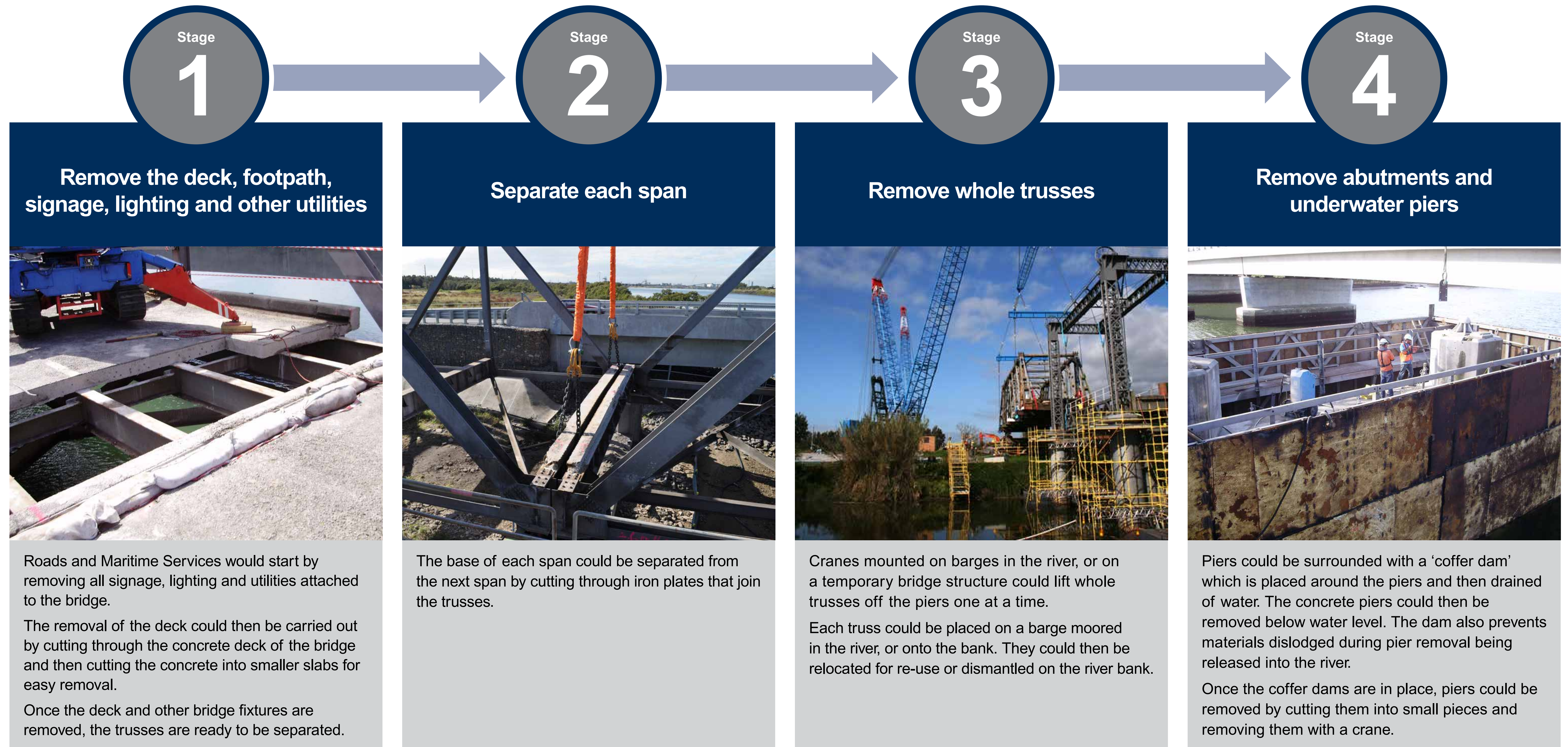
Nowra Bridge Project – Removing the old Nowra Bridge

OCTOBER/NOVEMBER 2014

If the old Nowra Bridge is removed parts of the bridge could be relocated to preserve the history of the bridge.

The process below shows one method of how we could remove the bridge. This method was used for the removal of Tourle Street Bridge and the refurbishment of Dunmore Bridge in Hunter Region. It would see each span of the bridge picked up by large cranes and removed from the piers intact.

We have a responsibility to conserve the bridge for continued use in its existing location. If this is not practical re-use should be investigated before removal would be considered.



Find us on facebook at facebook.com/PrincesHighwayUpgrade
QR code smart phone scan. Learn more about the Nowra Bridge Project at:
rms.nsw.gov.au/nowrabridge

☎ 1 800 331 713 (free call)
@ NowraBridgeProject@rms.nsw.gov.au
✉ Nowra Bridge Project, PO Box 477 Wollongong NSW 2520