



Australian Government

BUILDING OUR FUTURE



February 2022

Nowra Bridge project – Night work in March

The Nowra Bridge project will provide a new four lane bridge over the Shoalhaven River, upgraded intersections and additional lanes on the Princes Highway.

Upcoming night work

Night work will continue to be carried out on the Princes Highway, Scenic Drive, and Bolong, Illaroo and Bridge roads for the safety of workers and road users and to avoid extended traffic delays during the day.

Work will take place across the project from **Tuesday 1 March to Thursday 31 March between 6pm and 7am**, weather permitting.

There are a number of reasons why work is required outside standard construction hours including:

- **Safety** – work outside standard construction hours helps us improve safety by minimising the interactions between road users, pedestrians and workers
- **Traffic** – to safely carry out activities, traffic may be stopped, detoured or reduced to one lane. By working at night, delays are minimised and journey times for motorists and businesses are less affected
- **Utilities** – work may be required at night to minimise impacts on utility services and networks
- **Weather** – even when it's not raining, temperature and wind can impact activities including placing concrete and laying asphalt
- **Quality** – the quality of concrete and asphalt can be impacted if activities are not continuous

How will the work affect you?

During this work we will be using machinery and equipment that generate light, noise and vibration. We will make every effort to minimise disruption by:

- turning off machinery and vehicles when not in use
- using noise shields
- directing temporary lighting down and away from homes
- planning activities close to residents within standard construction hours and scheduling noisy activities earlier in the night, where possible
- fitting equipment with devices to minimise noise including reversing squawkers rather than beepers
- monitoring noise so we can manage any potential impacts and adjust our work, where possible.

Equipment being used during this night work includes light vehicles and trucks, cranes, elevated working platforms, lighting towers, power tools, concrete pump trucks, drill rigs, water trucks, street sweepers, asphalt machinery, rollers, excavators, and graders. We will continue to monitor noise and vibration impacts during this work.

Residents will have access to and from their properties at all times. Properties affected by utility service outages will be notified separately by the service provider. Oversize machinery and equipment may be delivered to these areas at night to avoid extended traffic delays during the day.

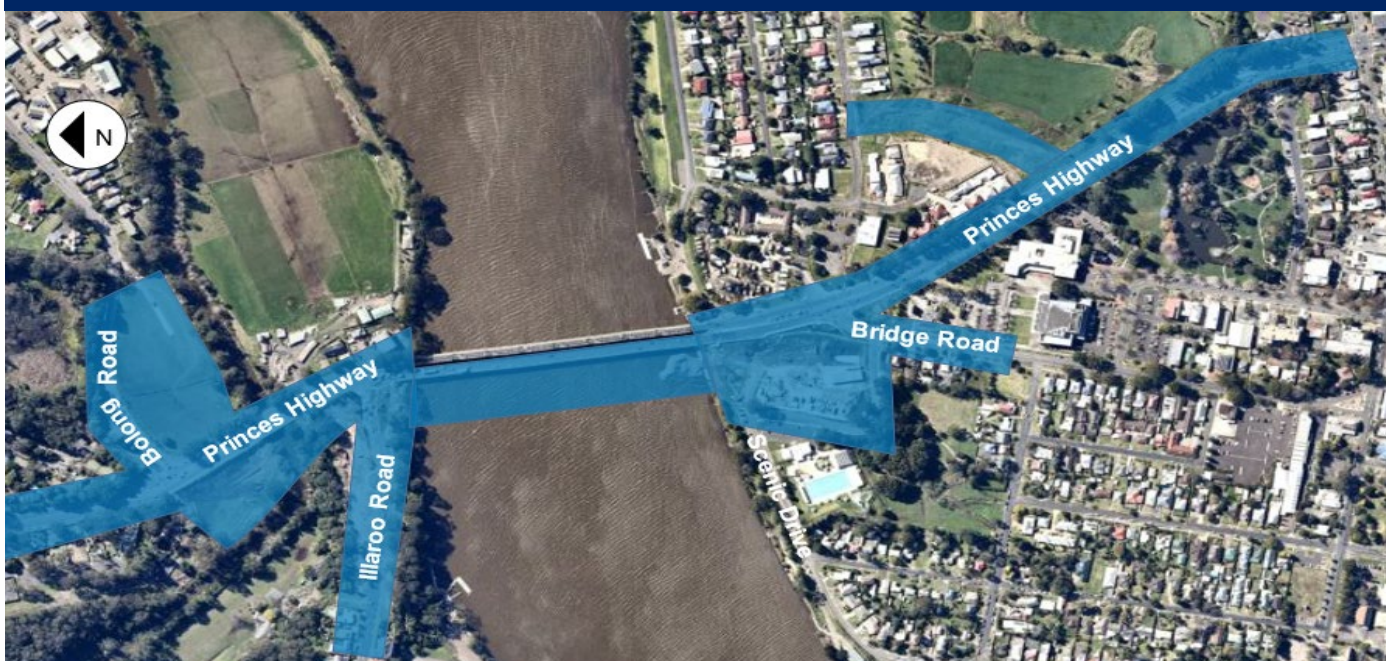
Traffic and pedestrian changes

There will be temporary traffic changes to ensure the work zone is safe. Lane closures, stop/slow traffic conditions and a 40km/h speed limit will be in place in both directions on the Princes Highway and Bolong, Illaroo and Bridge roads during the night work. This includes lane closures on the existing northbound bridge. Please keep to speed limits and follow the direction of traffic controllers and signs.

The footpath on the northbound bridge will be closed during some of these work activities with a detour via the footpath on the southbound bridge.

A map of the night work areas is below and a summary of activities provided over the page.

Location of night work



Location	Activities	Occurrence
Princes Highway (between Mattes Way and Illaroo Road)	Placing and removing temporary traffic barriers and material. Relocating and installing stormwater drainage, street lighting, footpath, kerb and placing asphalt and linemarking. Installing and commissioning electrical and telecommunication services.	Up to 14 nights
Bolong Road	Placing and removing temporary traffic barriers and material. Removing and installing, footpath, kerb and placing asphalt and linemarking.	Up to seven nights
Bomaderry Creek Bridge	Placing and removing temporary traffic barriers and material, pouring concrete, widening road pavement, placing asphalt and linemarking.	Up to eight nights
Illaroo Road	Placing and removing temporary traffic barriers and material, relocating and installing street lighting, footpath, kerb and placing asphalt and linemarking.	Up to ten nights
Existing northbound bridge	Pouring concrete for the new bridge piers. This work will involve partial lane closures and footpath detours.	Up to two nights
	Installing utility services underneath the northbound bridge. This work will involve partial lane closures and footpath detours.	Up to 21 nights
Casting yard and temporary rock platform	To ensure the quality and strength of the concrete elements of the new bridge, we will complete overnight concrete pours for the bridge deck structures. These concrete pours may start as early as 7pm and continue into normal working hours. This work will involve delivery of concrete to site, concrete pump trucks, and use of vibration equipment to place and compact concrete.	Up to four overnight concrete pours.
Scenic Drive compound	General office activities, pre-starts, vehicle movements and deliveries.	Up to 21 nights
Bridge Road	Placing and removing temporary traffic barriers and material. Relocating and installing street lighting, traffic control signals and service investigation work.	Up to five nights
Pleasant Way	Placing and removing temporary traffic barriers and traffic control signals.	Up to five nights
Princes Highway (between Shoalhaven River and Moss Street)	Placing and removing temporary traffic barriers and material. Relocating and installing street lighting, traffic control signals, stormwater drainage, footpath, kerb, landscaping, placing asphalt and line marking.	Up to 21 nights

Contact us



1800 331 713



NowraBridgeProject@fultonhogan.com.au



nswroads.work/NowraBridge



If you need help understanding this information, please contact the Translating and Interpreting Service on 131 450 and ask them to call us on 1800 331 713.