



Australian Government

BUILDING OUR FUTURE



November 2021

Nowra Bridge project – Christmas site shutdown and night work in December

The Nowra Bridge project will provide a new four lane bridge over the Shoalhaven River, upgraded intersections and additional lanes on the Princes Highway.

Christmas site shutdown

There will be a site shutdown over the Christmas period from **6pm Wednesday 22 December until 7am Monday 10 January 2022**. During this time, the reduced work zone speed limit of 60km/h will continue to be enforced and the project information line will be in operation for emergencies.

Upcoming night work

Night work will continue to be carried out on the Princes Highway, Scenic Drive, and Bolong, Illaroo and Bridge roads for the safety of workers and road users and to avoid extended traffic delays during the day.

Work will take place across the project from **Wednesday 1 December to Thursday 16 December between 6pm and 7am**, weather permitting.

There are a number of reasons why work is required outside standard construction hours including:

- **Safety** – work outside standard construction hours helps us improve safety by minimising the interactions between road users, pedestrians and workers
- **Traffic** – to safely carry out activities, traffic may be stopped, detoured or reduced to one lane. By working at night, delays are minimised and journey times for motorists and businesses are less affected
- **Utilities** – work may be required at night to minimise impacts on utility services and networks
- **Weather** – even when it's not raining, temperature and wind can impact activities including placing concrete and laying asphalt
- **Quality** – the quality of concrete and asphalt can be impacted if activities are not continuous

How will the work affect you?

During this work we will be using machinery and equipment that generate light, noise and vibration. We will make every effort to minimise disruption by:

- turning off machinery and vehicles when not in use
- using noise shields
- directing temporary lighting down and away from homes
- planning activities close to residents within standard construction hours and scheduling noisy activities earlier in the night, where possible
- fitting equipment with devices to minimise noise including reversing squawkers rather than beepers
- monitoring noise so we can manage any potential impacts and adjust our work, where possible.

Equipment being used during this night work includes light vehicles and trucks, cranes, elevated working platforms, lighting towers, power tools, concrete pump trucks, drill rigs, water trucks, street sweepers, asphalt machinery, rollers, excavators, and graders. We will continue to monitor noise and vibration impacts during this work.

Residents will have access to and from their properties at all times. Properties affected by utility service outages will be notified separately by the service provider. Oversize machinery and equipment may be delivered to these areas at night to avoid extended traffic delays during the day.

Traffic and pedestrian changes

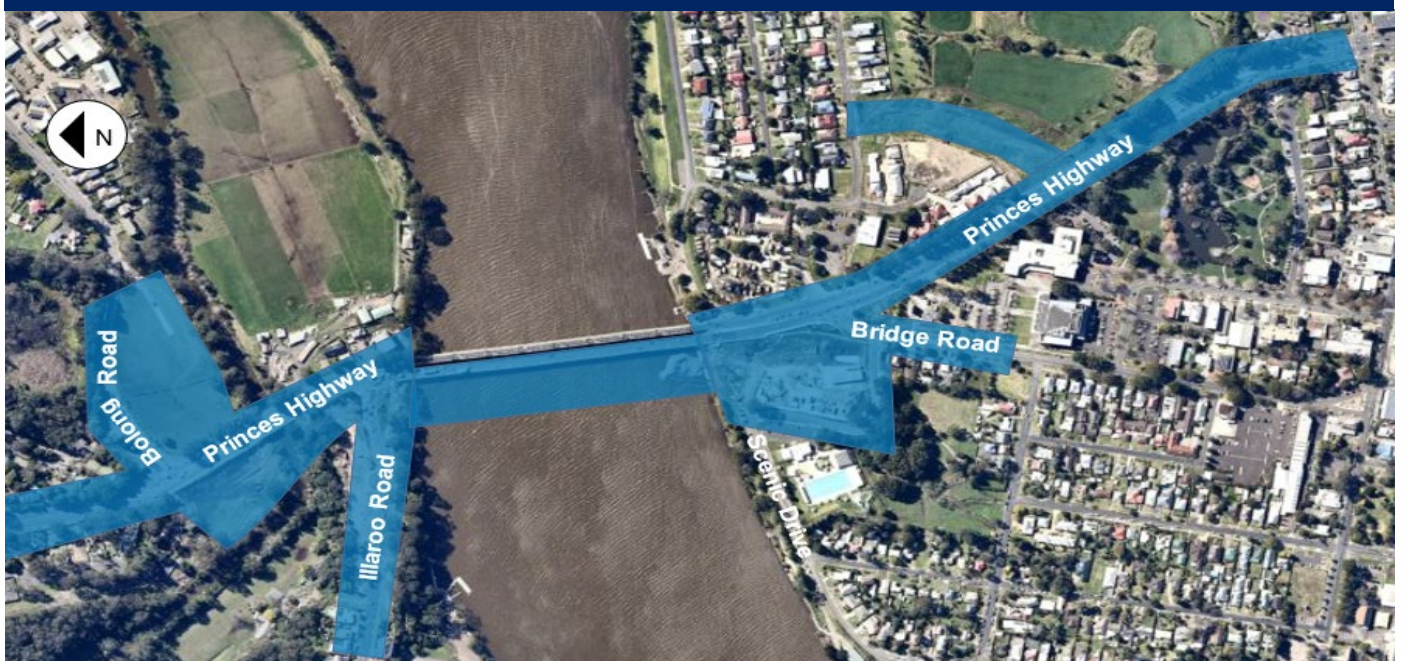
There will be temporary traffic changes to ensure the work zone is safe. Lane closures, stop/slow traffic conditions and a 40km/h speed limit will be in place in both directions on the Princes Highway and Bolong, Illaroo and Bridge roads during the night work. This includes lane closures on the existing northbound bridge. Please keep to speed limits and follow the direction of traffic controllers and signs.

The footpath on the northbound bridge will be closed during some of these work activities with a detour via the footpath on the southbound bridge. Signage will be in place advising of detours during these closures.

In December there will be some night closures of the southbound bridge to carry out concrete deck repairs and essential maintenance. We will inform the community prior to these closures.

A map of the night work areas is below and a summary of activities provided over the page.

Location of night work



Location	Activities	Occurrence
Princes Highway (between Mattes Way and Illaroo Road)	Placing and removing temporary traffic barriers and material. Relocating and installing utility services, stormwater drainage and traffic control signals, placing asphalt and line marking.	Up to seven nights
Bolong Road	Placing and removing temporary traffic barriers and material, relocating and installing utility services, stormwater drainage and traffic control signals.	Up to seven nights
Illaroo Road	Placing and removing temporary traffic barriers and material, relocating and installing, utility services, stormwater drainage and traffic control signals, placing signage, asphalt and line marking.	Up to four nights
Existing northbound bridge	Pouring concrete for the new bridge piers and pile caps, relocating sewer services and service investigation work. This work will involve partial lane closures and footpath detours.	Up to six nights
Existing southbound bridge	Closures of the southbound bridge to carry out concrete deck repairs and essential maintenance.	Up to five nights
Casting yard and temporary rock platform	Completing piling activities including placing reinforcement, moving barges, machinery and unloading, positioning, drilling and welding piles.	Monday to Friday until 10pm, Saturday and Sunday until 6pm.
	Removal of material from the temporary rock platform.	Monday to Friday until 8pm.
	To ensure the quality and strength of the concrete elements of the new bridge, we will complete overnight concrete pours for the piers, pile caps and bridge deck structures. These concrete pours may start as early as 7pm and continue into normal working hours. This work will involve lane closures, delivery of concrete to site, concrete pump trucks, and use of vibration equipment to place and compact concrete.	Up to five overnight concrete pours.
Scenic Drive compound	General office activities, pre-starts, vehicle movements and deliveries.	Up to 11 nights
Bridge Road	Placing and removing temporary traffic barriers and installing street lighting, footpath and landscaping.	Up to five nights
Princes Highway (between Shoalhaven River and Moss Street)	Placing and removing temporary traffic barriers and material, relocating and installing street lighting, stormwater drainage, footpath, kerb and landscaping and placing asphalt.	Up to 11 nights

Contact us

 1800 331 713

 NowraBridgeProject@fultonhogan.com.au

 nswroads.work/NowraBridge



If you need help understanding this information, please contact the Translating and Interpreting Service on 131 450 and ask them to call us on 1800 331 713.