



Australian Government

BUILDING OUR FUTURE



Transport for NSW

Nowra Bridge project

Project update



Work on the new Nowra Bridge progressing across the Shoalhaven River

What we've been doing

Work since March has included:

- Piling on the temporary rock platform and in the Shoalhaven River
- Installing the pile caps and building the piers
- Building and launching the bridge deck segments
- Installing drainage pipe and building kerb and gutter
- Preparing for traffic changes on Illaroo, Bridge and Bolong roads
- Producing video explainers on how the bridge is being built
- Presenting to community groups about the project.

Upcoming work

Work over the coming months will include:

- Piling for Bomaderry Creek Bridge
- Building the northern abutment for the new Nowra Bridge
- Asphaltting the new local road between Lyrebird Drive and the Princes Highway
- Installing street lighting

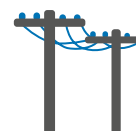
- Major traffic changes on Illaroo Road including lane closures on one weekend
- Weekend closures and detours of Bridge Road and Bolong Road.



39
piles driven for
the new bridge



2 of 19
bridge deck segments
launched over the
Shoalhaven River



98%
of major utility
relocations
complete

August 2021



Building the new bridge

Temporary rock platform

Piles

Piers

Launch nose

Span segments

Finishing work

Road surface

Abutments

The new Nowra Bridge is being built using a specialised technique known as incremental launching. The first double-T **span segments** have been built and launched across the Shoalhaven River. There will be 19 bridge deck segments in total for the new bridge.

The reinforcement for the bridge deck segments is built on the southern foreshore. Each double-T bridge deck segment is made up of 360 cubic metres of reinforced concrete which requires up to 60 concrete trucks. These segments are then incrementally launched across the Shoalhaven River using hydraulic jacks.

To ensure the quality and strength of the concrete elements of the new bridge, some of these concrete pours will occur overnight. These concrete pours may start as early as midnight and continue into normal working hours. This work will involve delivery of concrete to site, concrete pumps, and use of vibration equipment to place and compact concrete.



Hydraulic jack used to push the bridge into place



Launch nose being launched onto the bridge pier

Upcoming traffic changes across the project

Over the coming months there will be a number of temporary traffic changes and weekend closures of local roads to allow us to safely progress work across the project. We will keep the community informed of specific dates prior to these changes.

Traffic changes on Illaroo Road

A new section of Illaroo Road will be opened in a temporary arrangement from mid-August, weather permitting.

All traffic on Illaroo Road will temporarily move north onto the new section of road to allow us to continue work in this area.

The northbound left turn slip lane from the highway onto Illaroo Road will be temporarily removed as part of this work. Road users wishing to turn left onto Illaroo Road will come to a stop at the traffic signals and wait for the green left arrow to proceed.

The new roundabout at the intersection of Fairway Drive and Illaroo Road will be opened in a temporary configuration. This will allow safe access to the northern foreshore and Nowra Golf Club.

These temporary arrangements will be in place until mid-2022, weather permitting.

Weekend lane closures on Illaroo Road

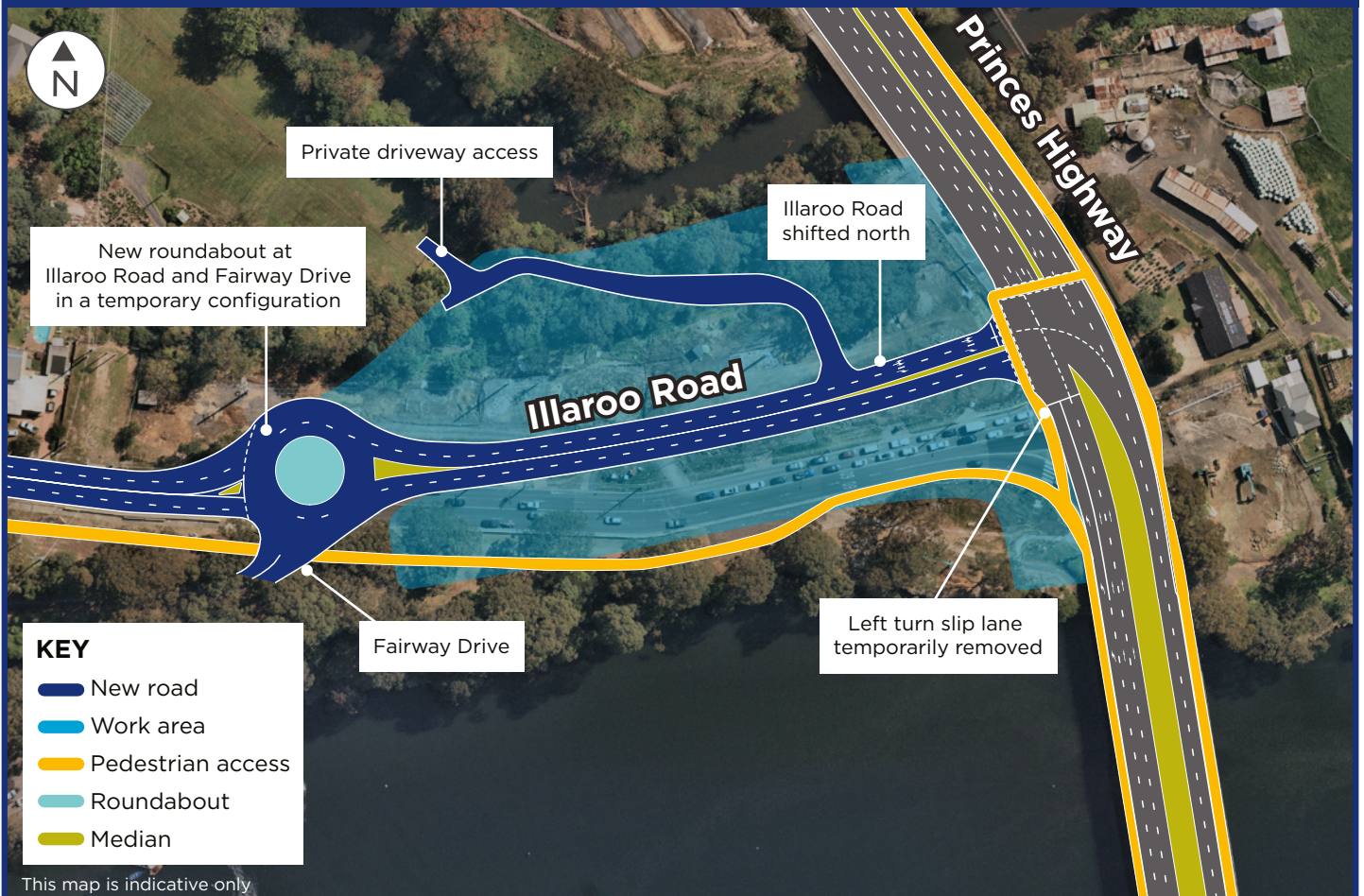
In preparation for these traffic changes there will be lane closures on Illaroo Road between the Princes Highway and Fairway Drive over one weekend. These lane closures will occur between **7pm Friday until 6am Monday**. Traffic will operate with one lane in each direction during the day and this will be reduced to one lane with stop/slow traffic control at night. There will also be a reduced speed limit of 40km/h on Illaroo Road during this weekend work.

Access to properties and Fairway Drive will be maintained at all times.

The footpath on the southern side of Illaroo Road will remain open for pedestrian access.

There will be no full closure of Illaroo Road during this work.

Changes on Illaroo Road



Changes between Bridge Road and Moss Street

All highway traffic between Bridge Road and Moss Street will shift west in early August, weather permitting. This will allow us to create a safe work area on the eastern side where we can connect Shearwater Way with the widened highway.

Night work will be required in preparation for these traffic changes and will include asphaltting, linemarking and installing temporary traffic barriers and street lights. Two northbound and southbound lanes will be maintained on the highway.

There will be a temporary closure of the underpass between Harry Sawkins Park and Campbell Place from mid-August for up to two months, weather permitting. This will enable the extension of the underpass. Pedestrians will be detoured via the Moss Street and Princes Highway signalled crossing during this closure.



Pavement work on the Princes Highway between Bridge Road and Moss Street

Bridge Road weekend closure

There will be a weekend closure of Bridge Road between Hyam Street and the Princes Highway in late August, weather permitting.

All vehicles will be detoured via the Princes Highway, Moss Street and North Street during this closure.

Resident and business access will be maintained at all times via the southern end of Bridge Road.

The closure and detour will be in place between 7pm Friday and 6am Monday on a selected weekend. Electronic signs will advertise specific dates in advance.

More information about these traffic changes will be available on the project website and emailed to registered stakeholders.



Intersection of Bridge Road and Princes Highway, looking east

Bolong Road weekend closure

A weekend closure of Bolong Road between Beinda Street and the Princes Highway will take place in early September, weather permitting.

A number of options were considered and a weekend closure was chosen for the safety of workers and to minimise disruption to road users, pedestrians and cyclists during busy periods in the week.

All light vehicles will be detoured via Beinda Street and all heavy vehicles will be detoured via Railway Street and Meroo Road during this closure.

Resident and business access will be maintained at all times via the eastern side of Bolong Road.

The closure and detour will be in place between 7pm Friday and 6am Monday on a selected weekend in September. Electronic signs will advertise specific dates in advance.

More information about these traffic changes will be available on the project website and emailed to registered stakeholders.



Intersection of Bolong Road and the Princes Highway, looking west

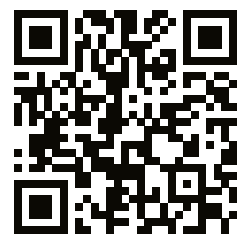
Community feedback

We are seeking feedback on your experience with the project team during the construction of the Nowra Bridge project. This is your opportunity to tell us what we are doing well and what we can improve on.

It includes questions about how well the team is managing environmental and traffic impacts during construction and keeping the community informed.

The feedback form should take less than five minutes to complete and you can remain anonymous.

Please provide your feedback by **Friday 13 August 2021**.



Have your say.
Scan here or visit
[nswroads.work/
NowraBridge](https://nswroads.work/NowraBridge)



To find out more about these traffic changes, visit the project website or register for email updates.

Keeping the community informed

Earlier this year we visited the Shoalhaven District Senior Citizens Association and the Shoalhaven Ladies Probus Club to provide an update on the project. The team love getting out in the community and will be presenting at more meetings in the coming months.



Members of the project team meeting with the Shoalhaven District Senior Citizens Association and the Shoalhaven Ladies Probus Club

New traffic control devices

Have you seen our new and innovative traffic control devices? These devices improve the safety of our workers near traffic by removing traffic controllers from live lanes. These devices include combinations of signage, flashing lights, portable boom gates and traffic signals.



New traffic control device on Bridge Road





Did you know?

The new local road connecting Lyrebird Drive to the Princes Highway will be called Shearwater Way. This new road will be open to traffic in early 2022, weather permitting.



Contact us

If you have any questions or would like to know more about the Nowra Bridge project please contact our project team:

-  1800 331 713 (toll free)
-  NowraBridgeProject@fultonhogan.com.au
-  nswroads.work/NowraBridge
-  14 Moss Street, Nowra NSW 2541



If you need help understanding this information, please contact the Translating and Interpreting Service on **131 450** and ask them to call us on **1800 331 713**.



August 2021
TfNSW 21.186

Privacy Transport for NSW ("TfNSW") is subject to the Privacy and Personal Information Protection Act 1998 ("PIIP Act") which requires that we comply with the Information Privacy Principles set out in the PIIP Act. All information in correspondence is collected for the sole purpose of assisting in the delivery of this project. The information received, including names and addresses of respondents, may be published in subsequent documents unless a clear indication is given in the correspondence that all or part of that information is not to be published. Otherwise TfNSW will only disclose your personal information, without your consent, if authorised by the law. Your personal information will be held by TfNSW at 27 Argyle Street, Parramatta. You have the right to access and correct the information if you believe that it is incorrect.