



Australian Government

**BUILDING OUR FUTURE**



July 2021

## Nowra Bridge project – Night work in August

The Nowra Bridge project will provide a new four lane bridge over the Shoalhaven River, upgraded intersections and additional lanes on the Princes Highway.

### Upcoming night work

Night work will continue to be carried out on the Princes Highway, Scenic Drive, and Bolong, Illaroo and Bridge roads for the safety of workers and road users and to avoid extended traffic delays during the day.

Work will take place across the project from **Sunday 1 August to Tuesday 31 August between 6pm and 7am**, weather permitting.

There are a number of reasons why work is required outside standard construction hours including:

- **Safety** – work outside standard construction hours helps us improve safety by minimising the interactions between road users, pedestrians and workers
- **Traffic** – to safely carry out activities, traffic may be stopped, detoured or reduced to one lane. By working at night, delays are minimised and journey times for motorists and businesses are less affected
- **Utilities** – work may be required at night to minimise impacts on utility services and networks
- **Weather** – even when it's not raining, temperature and wind can impact activities including placing concrete and laying asphalt
- **Quality** – the quality of concrete and asphalt can be impacted if activities are not continuous

### How will the work affect you?

During this work we will be using machinery and equipment that generate light, noise and vibration. We will make every effort to minimise disruption by:

- turning off machinery and vehicles when not in use
- using noise shields
- directing temporary lighting down and away from homes
- planning activities close to residents within standard construction hours and scheduling noisy activities earlier in the night, where possible
- fitting equipment with devices to minimise noise including reversing squawkers rather than beepers
- monitoring noise so we can manage any potential impacts and adjust our work, where possible.

Equipment being used during this night work includes light vehicles and trucks, cranes, elevated working platforms, lighting towers, power tools, concrete pump trucks, drill rigs, water trucks, street sweepers, asphalt machinery, rollers, excavators, and graders. We will continue to monitor noise and vibration impacts during this work.

Residents will have access to and from their properties at all times. Properties affected by utility service outages will be notified separately by the service provider. Oversize machinery and equipment may be delivered to these areas at night to avoid extended traffic delays during the day.

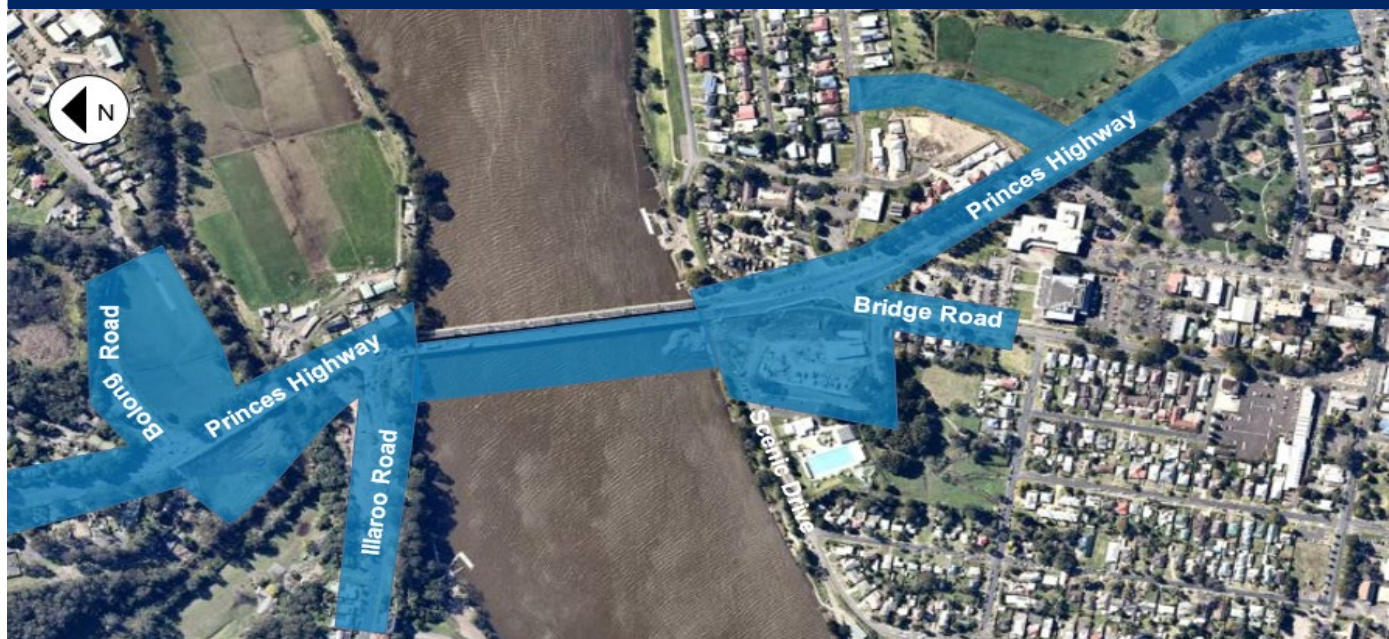
## Traffic and pedestrian changes

There will be temporary traffic changes to ensure the work zone is safe. Lane closures, stop/slow traffic conditions and a 40km/h speed limit will be in place in both directions on the Princes Highway and Bolong, Illaroo and Bridge roads during the night work. This includes lane closures on the existing northbound bridge. Please keep to speed limits and follow the direction of traffic controllers and signs.

The footpath on the northbound bridge will be closed during some of these night work activities with a detour via the footpath on the southbound bridge. Signage will be in place advising of detours during these closures.

A map of the night work areas during August is below and a summary of activities provided over the page.

### Location of night work



## Weekend work

In preparation for upcoming traffic changes, there will be lane closures on Illaroo Road between the Princes Highway and Fairway Drive over one weekend in mid-August and a full closure of Bridge Road between the Princes Highway and Hyam Street over one weekend later in the month.

During these two weekends, the Bolong Road site compound will be used outside of standard work hours to relocate material from these areas.

Location	Activities	Occurrence
<b>Illaroo Road</b>	Placing and removing temporary traffic barriers, installing drainage, relocating signage, street lighting and traffic control signals, removing existing pavement, placing asphalt and line marking.	One weekend in mid-August, 7pm Friday until 6am Monday
<b>Bridge Road</b>	Placing and removing temporary traffic barriers, installing drainage, relocating signage, street lighting and traffic control signals, removing existing pavement, placing asphalt and line marking.	One weekend in late August, 7pm Friday until 6am Monday

We will keep the community informed of specific dates in advance using electronic message boards and the project website. If you would like more information, please contact the team to register for email updates.

Location	Activities	Occurrence
<b>Project wide</b>	Installing and commissioning telecommunications services.	Up to 10 nights
<b>Princes Highway (between Mattes Way and Illaroo Road)</b>	Placing and removing temporary traffic barriers, loading and placing material, placing material at Bomaderry Creek, relocating signage and traffic control signals, installing street lighting, removing existing pavement, placing asphalt, line marking, installing electrical services and service investigation work.	Up to 15 nights
<b>Bolong Road</b>	Placing and removing temporary traffic barriers, loading and placing material, installing electrical services and service investigation work.	Up to five nights
<b>Illaroo Road</b>	Placing and removing temporary traffic barriers, removing existing pavement, placing asphalt, line marking, installing stormwater drainage, kerb and footpaths, installing electrical services and service investigation work.	Up to 15 nights
<b>Existing northbound bridge</b>	Pouring concrete for the new bridge piers and pile caps, relocating sewer services and service investigation work. This work will involve partial lane closures and footpath detours.	Up to 15 nights
<b>Casting yard and temporary rock platform</b>	Continuing with piling activities including placing reinforcement, moving barges and machinery and unloading, positioning, drilling and welding piles.	Monday to Friday until 7pm, with up to four occasions until 8pm.
	To ensure the quality and strength of the concrete elements of the new bridge, we will complete overnight concrete pours for the piers, pile caps and bridge deck structures. These concrete pours may start as early as midnight to 2am and continue into normal working hours. This work will involve lane closures, delivery of concrete to site, concrete pump trucks, and use of vibration equipment to place and compact concrete.	Up to seven overnight concrete pours.
<b>Scenic Drive compound</b>	General office activities, pre-starts, vehicle movements and deliveries.	Up to 21 nights
<b>Bridge Road</b>	Placing and removing temporary traffic barriers, removing existing pavement, placing asphalt, line marking, installing drainage kerb and footpaths, installing street lighting, relocating traffic control signals and service investigation work.	Up to 21 nights
<b>Pleasant Way</b>	Installing water main services.	Up to 15 nights
<b>Lyrebird Drive</b>	Installing sewer services.	Up to 5 nights
<b>Princes Highway (between Shoalhaven River and Moss Street)</b>	Placing and removing temporary traffic barriers, removing and loading material, relocating and installing street lighting and traffic control signals, placing asphalt, line marking, installing electrical services and service investigation work.	Up to 21 nights

## Contact us

 1800 331 713

 [NowraBridgeProject@fultonhogan.com.au](mailto:NowraBridgeProject@fultonhogan.com.au)

 [nswroads.work/NowraBridge](http://nswroads.work/NowraBridge)



If you need help understanding this information, please contact the Translating and Interpreting Service on 131 450 and ask them to call us on 1800 331 713.