



Nowra Bridge Project

Night work in July 2022

The Nowra Bridge project will provide a new four lane bridge over the Shoalhaven River, upgraded intersections and additional lanes on the Princes Highway.

Upcoming night work

Night work will continue to be carried out on the Princes Highway, Scenic Drive, and Bolong, Illaroo and Bridge roads for the safety of workers and road users and to avoid extended traffic delays during the day.

Work will take place across the project from **Friday 1 July to Sunday 31 July 2022, between 6pm and 7am**, weather permitting.

There are a number of reasons why work is required outside standard construction hours including:

- **Safety** – work outside standard construction hours helps us improve safety by minimising the interactions between road users, pedestrians and workers
- **Traffic** – to safely carry out activities, traffic may be stopped, detoured or reduced to one lane. By working at night, delays are minimised and journey times for motorists and businesses are less affected
- **Utilities** – work may be required at night to minimise impacts on utility services and networks
- **Weather** – even when it's not raining, temperature and wind can impact activities including placing concrete and laying asphalt
- **Quality** – the quality of concrete and asphalt can be impacted if activities are not continuous

How will the work affect you?

During this work we will be using machinery and equipment that generate light, noise and vibration. We will make every effort to minimise disruption by:

- turning off machinery and vehicles when not in use
- using noise shields
- directing temporary lighting down and away from homes
- planning activities close to residents within standard construction hours and scheduling noisy activities earlier in the night, where possible

- fitting equipment with devices to minimise noise including reversing squawkers rather than beepers
- monitoring noise so we can manage any potential impacts and adjust our work, where possible.

Equipment being used during this night work includes light vehicles and trucks, cranes, elevated working platforms, lighting towers, power tools, concrete pump trucks, drill rigs, water trucks, street sweepers, asphalt machinery, rollers, excavators, and graders. We will continue to monitor noise and vibration impacts during this work.

Traffic and pedestrian changes

There will be temporary traffic changes to ensure the work zone is safe. Lane closures, stop/slow traffic conditions and a 40km/h speed limit will be in place in both directions on the Princes Highway and Bolong, Illaroo and Bridge roads during the night work. This includes lane closures on the existing northbound bridge. Please keep to speed limits and follow the direction of traffic controllers and signs.

The footpath on the northbound bridge will be closed during some of these work activities with a detour via the footpath on the southbound bridge.

A map of the night work areas is below and a summary of activities provided below.



Weekend work on Bolong Road

To carry out pavement work in preparation for upcoming traffic changes, there will be partial lane closures on Bolong Road and the right turn lanes from the Princes Highway at the intersection with Bolong Road.

This closure is part of work taking place over multiple weekends in July and August. The community will be informed of the dates and impacts of works scheduled for each weekend in advance.

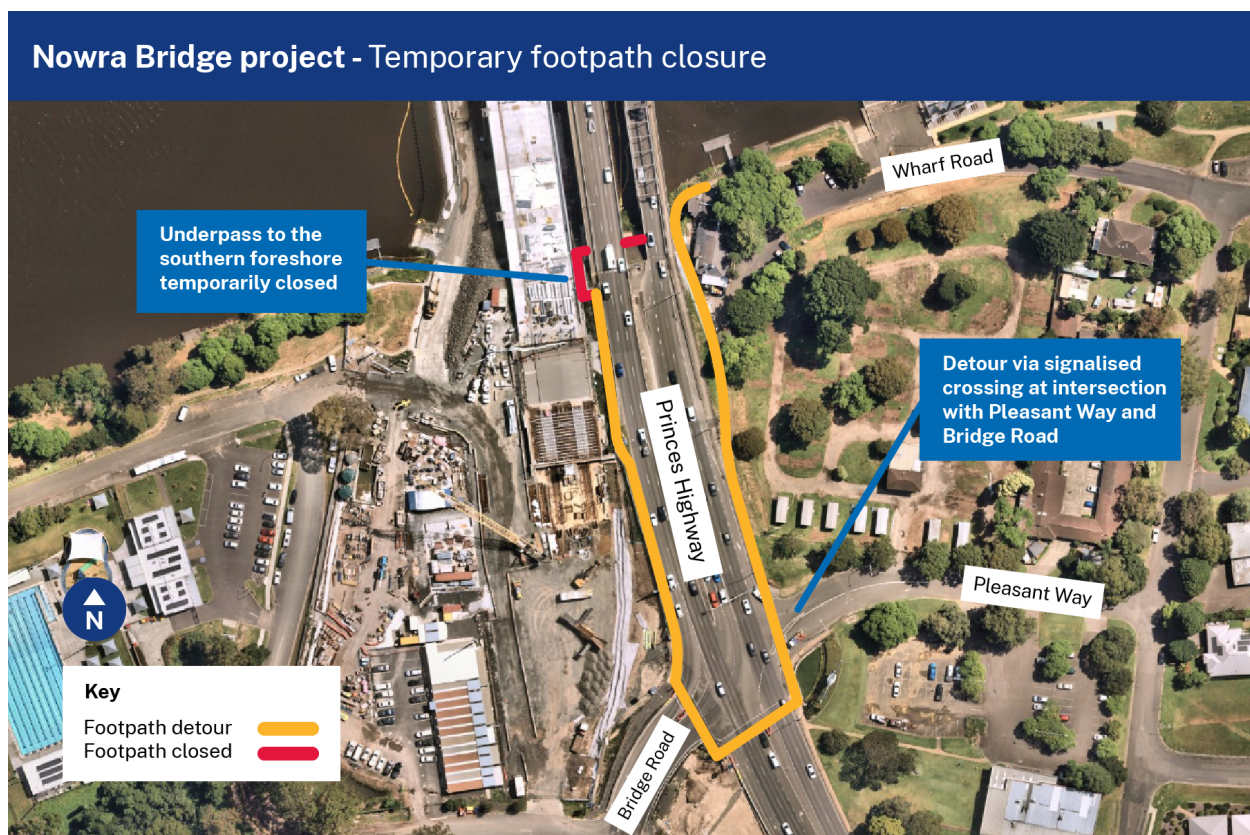
Details of planned work

Location	Activities	Occurrence
Princes Highway (between Mattes Way and Illaroo Road)	Placing and removing temporary traffic barriers and material. Relocating and installing stormwater drainage, street lighting, footpath, kerb and placing asphalt, pavement construction and linemarking. Installing and commissioning electrical and telecommunication services.	Up to 15 nights
Bolong Road	Placing and removing temporary traffic barriers and material. Installing stormwater drainage and street lighting. Removing and installing, footpath, kerb and placing asphalt and linemarking.	Up to 6 nights
Illaroo Road	Placing and removing temporary traffic barriers and material, relocating and installing street lighting, footpath, kerb and placing asphalt and linemarking.	Up to 5 nights
Existing northbound bridge	Coring for pavement investigation works. This work will involve partial lane closures and footpath detours.	Up to 5 nights
	Pouring concrete for the median barrier on the new bridge. This work will involve partial lane closures and footpath detours.	Up to 5 nights between 7pm and 11pm.
Scenic Drive compound	General office activities, pre-starts, vehicle movements and deliveries.	Up to 20 nights
Bridge Road	Placing and removing temporary traffic barriers and material. Relocating and installing street lighting, traffic control signals and service investigation work. Placing asphalt and line marking.	Up to 10 nights
Princes Highway (between Shoalhaven River and Moss Street)	Placing and removing temporary traffic barriers and material. Relocating and installing street lighting, traffic control signals, stormwater drainage, pavement construction, footpath, kerb, landscaping, placing asphalt and line marking.	Up to 15 nights

Temporary footpath closure on the southern foreshore

In the coming weeks, there will be a temporary closure of the pedestrian underpass on the southern foreshore while work is carried out to remove scaffolding, and install lighting and a footpath. The closure will be in place between 7am to 6pm for up to four weeks, weather permitting. The community will be informed of the dates via email. Signage will be in place during these temporary closures.

Pedestrians will be detoured via the Princes Highway signalised crossing at the intersection with Pleasant Way and Bridge Road. The detour route can be viewed on the map below.



Contact us



1800 331 713



NowraBridgeProject@fultonhogan.com.au



nswroads.work/NowraBridge



If you need help understanding this information, please contact the Translating and Interpreting Service on **131 450** and ask them to call us on **1800 331 713**