



December 2022

# Nowra Bridge Project

## Night work in January 2023

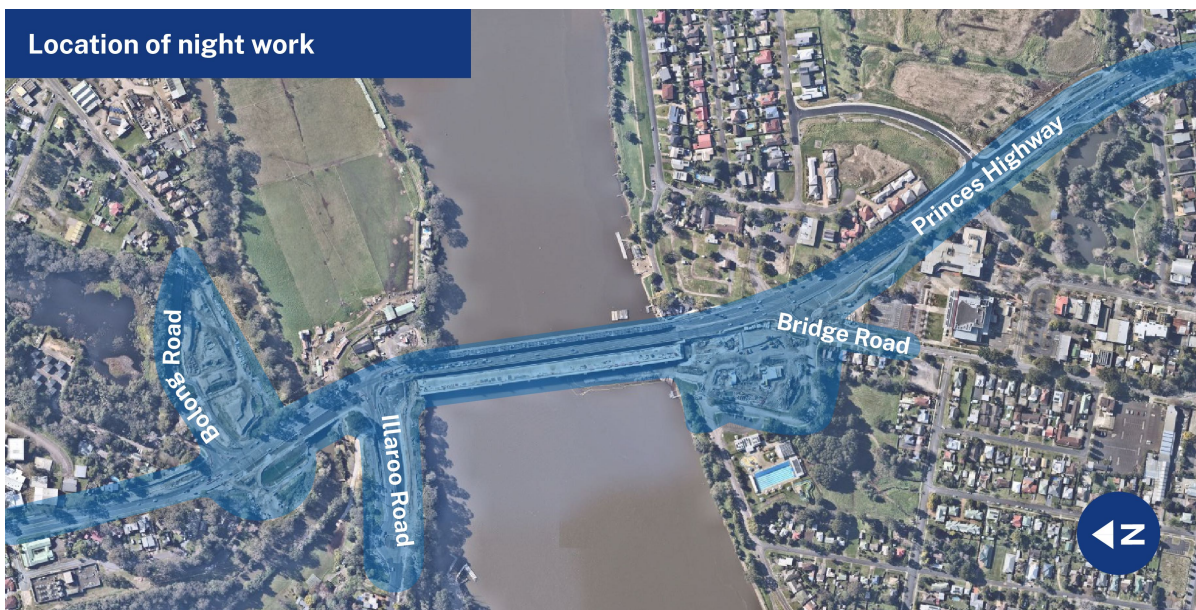
The Nowra Bridge project will provide a new four lane bridge over the Shoalhaven River, upgraded intersections and additional lanes on the Princes Highway.

### Upcoming night work

Night work will be carried out from **Wednesday 11 January 2023 to Tuesday 31 January 2023**, on the Princes Highway, Scenic Drive, and Bolong, Illaroo and Bridge roads.

For the safety of workers and road users, and to avoid extended traffic delays during the day, works will be done at night between 6pm and 7am, weather permitting.

A map of the night work areas and a summary of activities is included in this notification.



### Merry Christmas and Happy New Year

The Nowra Bridge project team wishes you a Merry Christmas and a Happy New Year. The project has hit a few major milestones this year, including the bridge touching down on the northern foreshore, moving traffic onto the new widened section of Bomaderry Creek Bridge, opening Shearwater Way, and soon, the new bridge will open to traffic and pedestrians.

Thank you for your patience as we've completed this work. We're looking forward to everything that's coming up in 2023!

The site will shutdown over the Christmas period from **6pm Thursday 22 December until 7am Monday 9 January 2023**. There will be no construction work during this time. Reduced work zone speed limits will continue to be enforced.

## Details of planned night work

Location	Activities	Occurrence
Princes Highway (between Mattes Way and Bomaderry Creek Bridge)	Placing and removing temporary traffic signals, barriers and material. Relocating and installing stormwater drainage, street lighting, footpath, kerb and gutter. Placing asphalt, pavement construction and line marking. Installing and commissioning electrical and telecommunication services.	Up to 10 nights
Bolong Road	Placing and removing temporary traffic barriers and material. Installing footpath, kerb and gutter. Placing asphalt and line marking.	Up to 8 nights
Illaroo Road (including intersection with the Princes Highway)	Placing and removing temporary traffic barriers and material. Relocating and installing street lighting, traffic control signals and service investigation work. Placing asphalt and line marking.	Up to 5 nights
Princes Highway (new Nowra Bridge)	Placing asphalt and pavement construction.	Up to 10 nights
Scenic Drive	General office activities, pre-starts, vehicle movements, earthworks and deliveries.	Up to 13 nights
Bridge Road	Placing and removing temporary traffic barriers and material. Relocating and installing street lighting, traffic control signals and service investigation work. Placing pavement, asphalt and line marking.  Temporary traffic changes will be in place during some of this work, which may include closures and detours via Moss Street.	Up to 13 nights
Pleasant Way	Placing and removing temporary traffic barriers and material. Service investigation works.	Up to 3 nights
Princes Highway (between Shoalhaven River and Moss Street)	Placing and removing temporary traffic barriers and material. Relocating and installing street lighting, traffic control signals, stormwater drainage, pavement construction, footpath, kerb and gutter, and landscaping. Placing asphalt and line marking.	Up to 13 nights

## Why is work carried out at night?

There are a number of reasons why work is required outside standard construction hours including:

- **Safety** – work outside standard construction hours helps us improve safety by minimising the interactions between road users, pedestrians and workers
- **Traffic** – to safely carry out activities, traffic may be stopped, detoured or reduced to one lane. By working at night, delays are minimised and journey times for motorists and businesses are less affected
- **Utilities** – work may be required at night to minimise impacts on utility services and networks
- **Weather** – even when it's not raining, temperature and wind can impact activities including placing concrete and laying asphalt
- **Quality** – the quality of concrete and asphalt can be impacted if activities are not continuous

## How will the work affect you?

During this work we will be using machinery and equipment that generate light, noise and vibration. We will make every effort to minimise disruption by:

- turning off machinery and vehicles when not in use
- using noise shields
- directing temporary lighting down and away from homes
- planning activities close to residents within standard construction hours and scheduling noisy activities earlier in the night, where possible
- fitting equipment with devices to minimise noise including reversing squawkers rather than beepers
- monitoring noise so we can manage any potential impacts and adjust our work, where possible.

Equipment being used during night work includes light vehicles and trucks, cranes, elevated working platforms, lighting towers, power tools, concrete pump trucks, drill rigs, water trucks, street sweepers, asphalt machinery, rollers, excavators, and graders. We will continue to monitor noise and vibration impacts during this work.

### Contact us



1800 331 713



NowraBridgeProject@fultonhogan.com.au



nswroads.work/NowraBridge



If you need help understanding this information, please contact the Translating and Interpreting Service on 131 450 and ask them to call us on 1800 331 713