



October 2022

Nowra Bridge Project

Night work in November 2022

The Nowra Bridge project will provide a new four lane bridge over the Shoalhaven River, upgraded intersections and additional lanes on the Princes Highway.

Upcoming night work

Night work will be carried out from **Tuesday 1 November to Wednesday 30 November 2022** on the Princes Highway, Scenic Drive, and Bolong, Illaroo and Bridge roads.

For the safety of workers and road users, and to avoid extended traffic delays during the day, works will be done at night between 6pm and 7am, weather permitting.

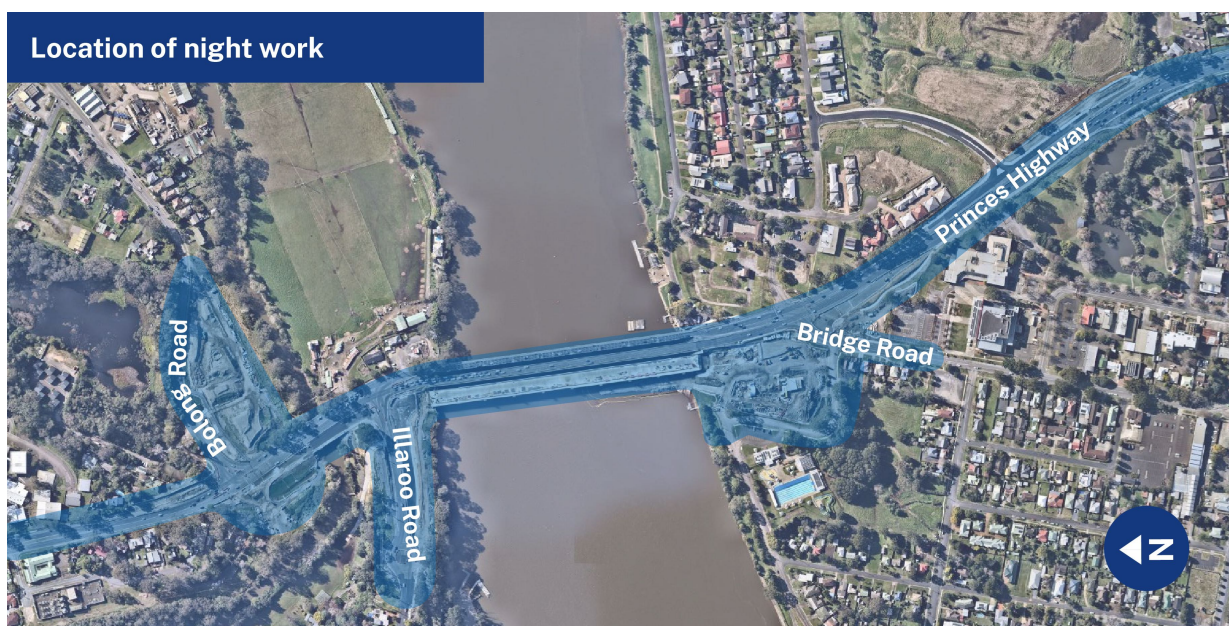
A map of the night work areas and a summary of activities is included in this notification.

Traffic and pedestrian changes during night work

There will be temporary traffic changes to ensure the work zone is safe. Lane closures, stop/slow traffic conditions and a 40 km/h speed limit will be in place in both directions on the Princes Highway and Bolong, Illaroo and Bridge roads during night work.

Please keep to speed limits and follow the direction of traffic controllers, signs and adhere to the pedestrian footpaths and detoured routes.

The footpath on the northbound bridge will be closed during some of these work activities with a detour via the footpath on the southbound bridge.



Details of planned work

Location	Activities	Occurrence
Princes Highway (between Mattes Way and Bomaderry Creek Bridge)	Placing and removing temporary traffic signals, barriers and material. Relocating and installing stormwater drainage, street lighting, footpath, kerb and gutter. Placing asphalt, pavement construction and line marking. Installing and commissioning electrical and telecommunication services.	Up to 10 nights
Bolong Road	Placing and removing temporary traffic barriers and material. Installing footpath, kerb and gutter. Placing asphalt and line marking.	Up to 5 nights
Illaroo Road (including intersection with the Princes Highway)	Placing and removing temporary traffic barriers and material. Relocating and installing street lighting, traffic control signals and service investigation work. Placing asphalt and line marking.	Up to 5 nights
Princes Highway (new Nowra Bridge)	Placing asphalt and pavement construction.	Up to 10 nights
Scenic Drive compound	General office activities, pre-starts, vehicle movements and deliveries.	Up to 22 nights
Bridge Road	Placing and removing temporary traffic barriers and material. Relocating and installing street lighting, traffic control signals and service investigation work. Placing pavement, asphalt and line marking. Temporary traffic changes will be in place during some of this work, which may include detours via Moss Street.	Up to 22 nights
Princes Highway (between Shoalhaven River and Moss Street)	Placing and removing temporary traffic barriers and material. Relocating and installing street lighting, traffic control signals, stormwater drainage, pavement construction, footpath, kerb and gutter, and landscaping. Placing asphalt and line marking.	Up to 22 nights

Why is work carried out at night?

There are a number of reasons why work is required outside standard construction hours including:

- **Safety** – work outside standard construction hours helps us improve safety by minimising the interactions between road users, pedestrians and workers
- **Traffic** – to safely carry out activities, traffic may be stopped, detoured or reduced to one lane. By working at night, delays are minimised and journey times for motorists and businesses are less affected
- **Utilities** – work may be required at night to minimise impacts on utility services and networks
- **Weather** – even when it's not raining, temperature and wind can impact activities including placing concrete and laying asphalt
- **Quality** – the quality of concrete and asphalt can be impacted if activities are not continuous

How will the work affect you?

During this work we will be using machinery and equipment that generate light, noise and vibration. We will make every effort to minimise disruption by:

- turning off machinery and vehicles when not in use
- using noise shields
- directing temporary lighting down and away from homes
- planning activities close to residents within standard construction hours and scheduling noisy activities earlier in the night, where possible
- fitting equipment with devices to minimise noise including reversing squawkers rather than beepers
- monitoring noise so we can manage any potential impacts and adjust our work, where possible.

Equipment being used during night work includes light vehicles and trucks, cranes, elevated working platforms, lighting towers, power tools, concrete pump trucks, drill rigs, water trucks, street sweepers, asphalt machinery, rollers, excavators, and graders. We will continue to monitor noise and vibration impacts during this work.

Upcoming Bridge Road closures

Work to build the northern approach to the new bridge will be carried out in the coming months, with temporary closures of Bridge Road required at times.

These closures will allow us to carry out pavement works to accommodate the new configuration and width of the Princes Highway near Bridge Road.

Most of this work will be carried out at night for the safety of workers and road users, and to reduce traffic impacts. Some of this work will take place during the day with temporary traffic changes in place including detours via Moss Street.

Business and resident access will be maintained. The community will be informed of dates and impacts in advance.

Pedestrian access around the project

Maps detailing current pedestrian access have been updated around the project site and have been installed at intersections with the Princes Highway and Beinda Street, Bolong Road, Illaroo Road, Bridge Road, Pleasant Way and Moss Street.

While there may be temporary access changes during certain works, pedestrian access will be maintained.

For your safety, pedestrians, cyclists and motorised scooter riders are reminded to follow signs and directions of traffic control.

Contact us



1800 331 713



NowraBridgeProject@fultonhogan.com.au



nswroads.work/NowraBridge



If you need help understanding this information, please contact the Translating and Interpreting Service on 131 450 and ask them to call us on 1800 331 713