



Nowra Bridge project – out of hours work in December and Christmas site shutdown

The Nowra Bridge project will provide a new four lane bridge over the Shoalhaven River, upgraded intersections and additional lanes on the Princes Highway.

Upcoming night work

Night work will continue to be carried out on the Princes Highway, Scenic Drive, and Bolong, Illaroo and Bridge roads for the safety of workers and road users and to avoid extended traffic delays during the day.

Night work will take place across the project from **Tuesday 1 December to Thursday 17 December**, weather permitting. Our night work will occur **Sunday to Thursday between 6pm and 7am**.

A summary of night work activities during December is below and a map of the work areas is provided over the page.

Christmas site shutdown

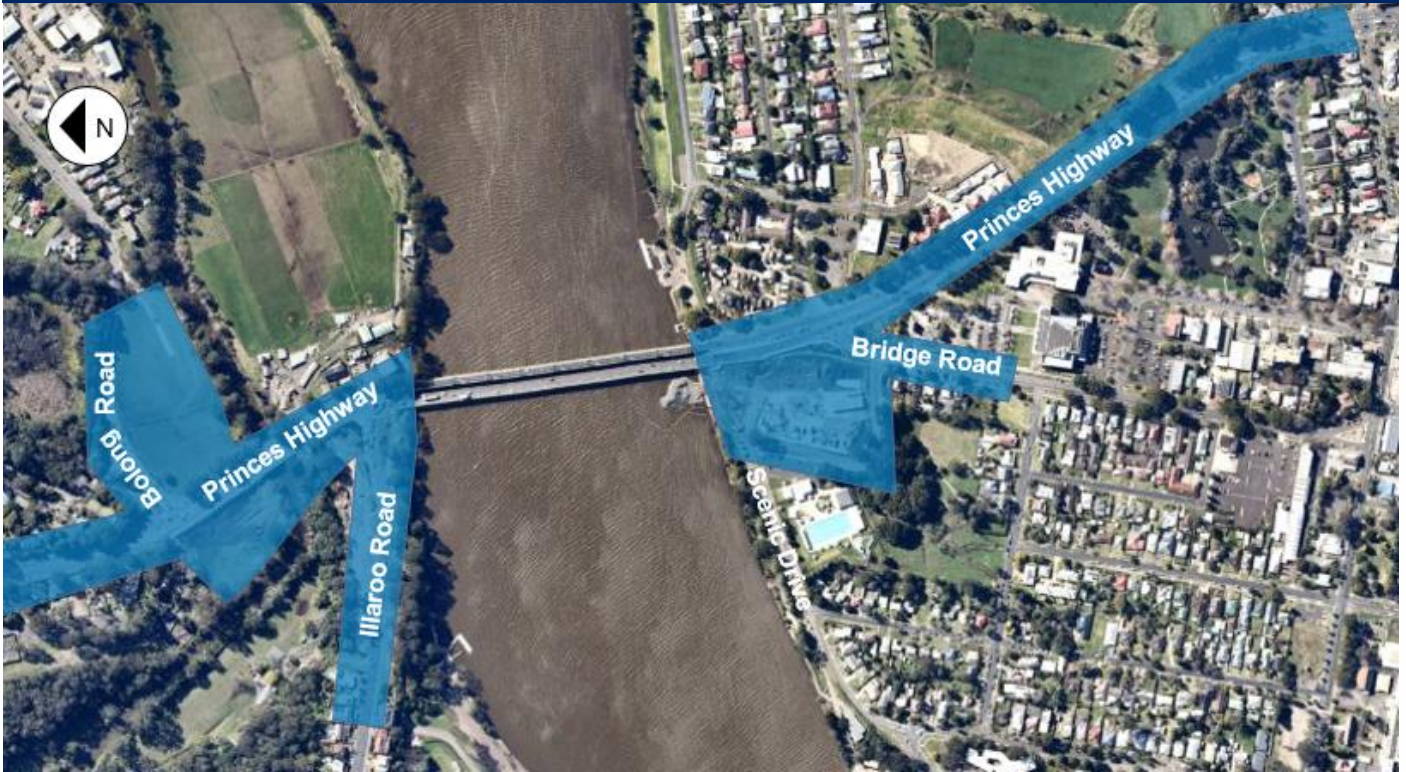
There will be a site shutdown over the Christmas period from **6pm Friday 18 December until 7am Monday 4 January 2021**. There will be no construction work during this time however the project information line will be in operation for emergencies.

Location	Activities	Occurrence
Bolong Road	Clearing vegetation, installing temporary traffic barriers, delivery and placement of material, service investigation work and relocating water, gas, electrical and communication services.	Up to 13 nights
Princes Highway (between Mattes Way and Illaroo Road)	Clearing vegetation, installing temporary traffic barriers, delivery and placement of material, removal of median, asphalt paving, line marking, installing and relocating traffic control signals, service investigation work and relocating water, sewer, gas, electrical and communication services.	Up to 13 nights
Illaroo Road	Clearing vegetation, installing temporary traffic barriers, service investigation work and relocating sewer, gas and communication services.	Up to 13 nights
Princes Highway (between Bridge Road and Moss Street)	Installing drainage, service investigation work and relocating water, electrical and communication services.	Up to 10 nights
Bridge Road	Service investigation work and relocating water, sewer, electrical and communication services.	Up to 13 nights
Scenic Drive compound	General office activities, pre-starts, vehicle movements and deliveries	Up to 13 nights

Traffic changes

There will be temporary traffic changes to ensure the work zone is safe. Lane closures, stop/slow traffic conditions and a 40km/h speed limit will be in place in both directions on the Princes Highway and Bolong, Illaroo and Bridge roads during the night work. Please keep to speed limits and follow the direction of traffic controllers and signs.

Location of night work



How will the work affect you?

During this work we will be using machinery and equipment that generate light, noise and vibration. We will make every effort to minimise disruption by:

- turning off machinery and vehicles when not in use
- using noise shields
- directing temporary lighting down and away from homes
- planning activities close to residents within standard construction hours and scheduling noisy activities earlier in the night, where possible
- fitting equipment with devices to minimise noise including reversing squawkers rather than beepers
- monitoring noise so we can manage any potential impacts and adjust our work, where possible.

Residents will have access to and from their properties at all times.

Properties affected by utility service outages will be notified separately by the service provider.

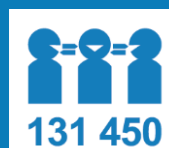
Oversize machinery and equipment may be delivered to these areas at night to avoid extended traffic delays during the day. Nearby residents will be notified if these vehicle movements are required.

Contact us

 1800 331 713

 NowraBridgeProject@fultonhogan.com.au

 nswroads.work/NowraBridge



If you need help understanding this information, please contact the Translating and Interpreting Service on 131 450 and ask them to call us on 1800 331 713.