



Nowra Bridge project – new northbound traffic lights on the Princes Highway at Bolong Road and temporary highway lane closures

The Nowra Bridge project will provide a new four lane bridge over the Shoalhaven River, upgraded intersections and additional lanes on the Princes Highway.

Highway traffic shifting east between Bolong Road and Mattes Way

We have been removing the median island on the Princes Highway between Bolong Road and Mattes Way. This will allow all highway traffic to shift east from **Thursday 10 December**, weather permitting. These changes will create a safe work area to the west and allow us to begin widening the highway.

As part of these changes we will be removing the existing median islands, resurfacing the road, linemarking and installing temporary traffic barriers. Some of these activities may be carried out at night for the safety of workers and motorists and to avoid extended traffic delays during the day.

New northbound traffic lights on the Princes Highway at Bolong Road

There will be some permanent changes to the traffic lights at the Bolong Road and Princes Highway intersection as part of the traffic shift. The acceleration lane for vehicles turning right onto the Princes Highway from Bolong Road will be permanently removed from **Thursday 10 December**. New traffic lights will be installed to stop northbound highway traffic, to allow vehicles to safely turn right out of Bolong Road.

These changes are part of the project's final design and will improve road safety for heavy vehicles turning right out of Bolong Road, and later in the project this will enable pedestrians to cross the highway at the Bolong Road intersection.

Temporary lane closures on the Princes Highway between Bolong Road and Illaroo Road

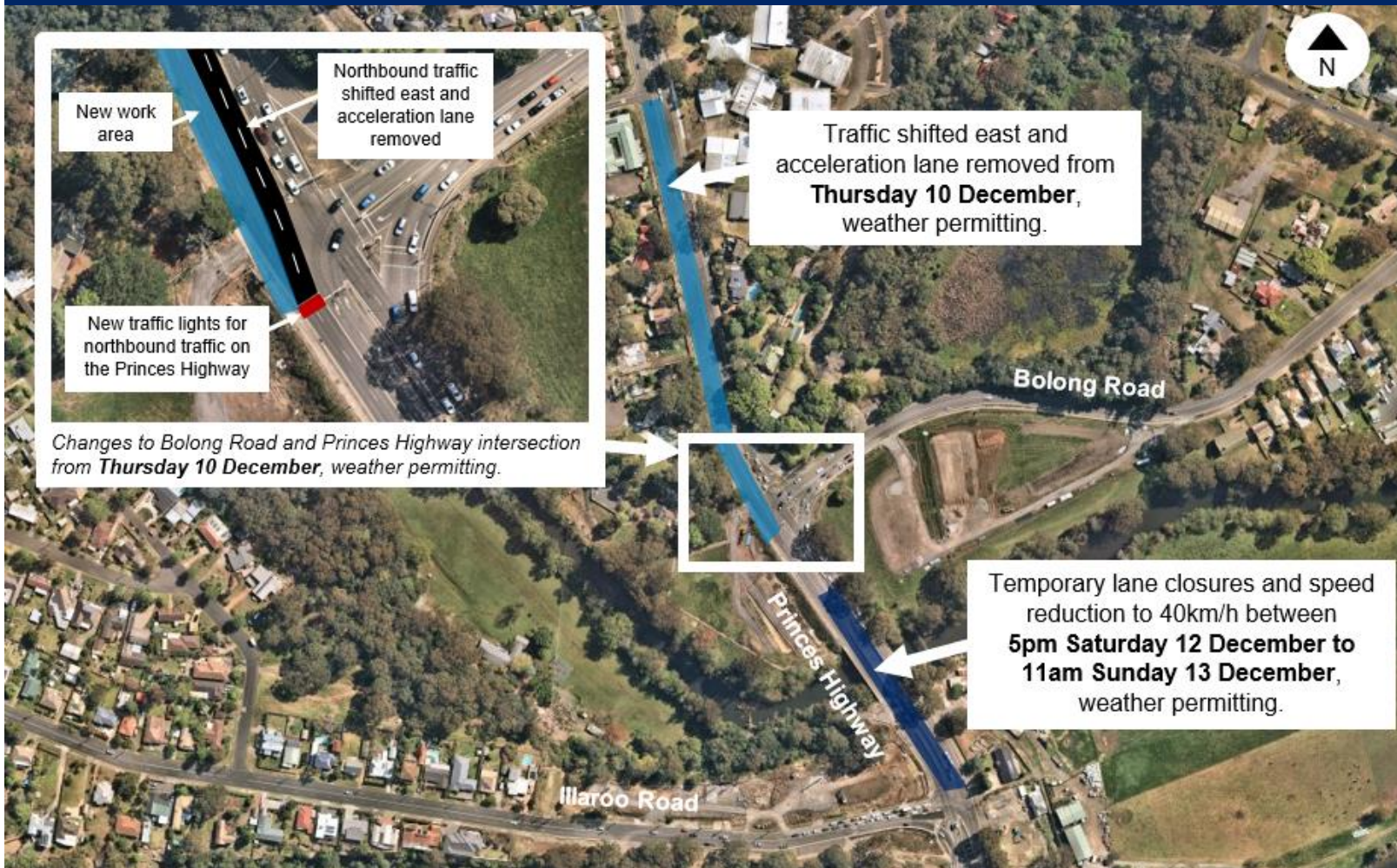
There will be a temporary closure of the northbound and southbound fast lanes and a reduced speed of 40 km/h from **5pm Saturday 12 December to 11am Sunday 13 December**, weather permitting. During this time the Princes Highway between Bolong Road and Illaroo Road will be reduced to one lane in each direction.

These changed traffic conditions will be in place while concrete is poured in the median of the Bomaderry Creek Bridge. The changes are required to allow the new concrete to gain strength and to reduce vehicle vibrations near the work.

The closures will occur on the weekend when traffic volumes are lower. Please allow up to an additional 15 minutes travel time during this work.

Electronic signs will be in place to advertise traffic changes and reduced speed limits in advance. Motorists are advised to drive to the conditions, and follow the directions of signs and traffic control.

Upcoming traffic changes



Contact us



1800 331 713



NowraBridgeProject@fultonhogan.com.au



nswroads.work/NowraBridge



If you need help understanding this information, please contact the Translating and Interpreting Service on 131 450 and ask them to call us on 1800 331 713.