



Australian Government

**BUILDING OUR FUTURE**



**NBP013** September 2020

## **Pedestrian changes on Princes Highway from Illaroo Road to Beinda Street**

The Nowra Bridge project will provide a new four lane bridge over the Shoalhaven River, upgraded intersections and additional lanes on the Princes Highway.

### **What are we doing?**

We are moving all traffic on the Princes Highway between Bolong Road and Moss Street to the east from **Sunday 6 September**, weather permitting. This will allow us to create a new work zone on the western side of the highway so we can safely carry out work in this area.

### **How will the work affect you?**

The footpath on the western side of the Princes Highway between Illaroo Road and Mattes Way will be closed where the new work zone will be located. The footpath will be closed from **Sunday 13 September for about 12 months**.

Pedestrians will be detoured onto the footpath on the eastern side of the highway. Crossing locations are available at the Beinda Street roundabout or at the signalised crossing at Illaroo Road.

The pedestrian underpass on the northern side of Nowra Bridge near Illaroo Road also remains closed, with pedestrians crossing at the traffic signals at Illaroo Road. Pedestrians should cross at the traffic lights at Illaroo Road.

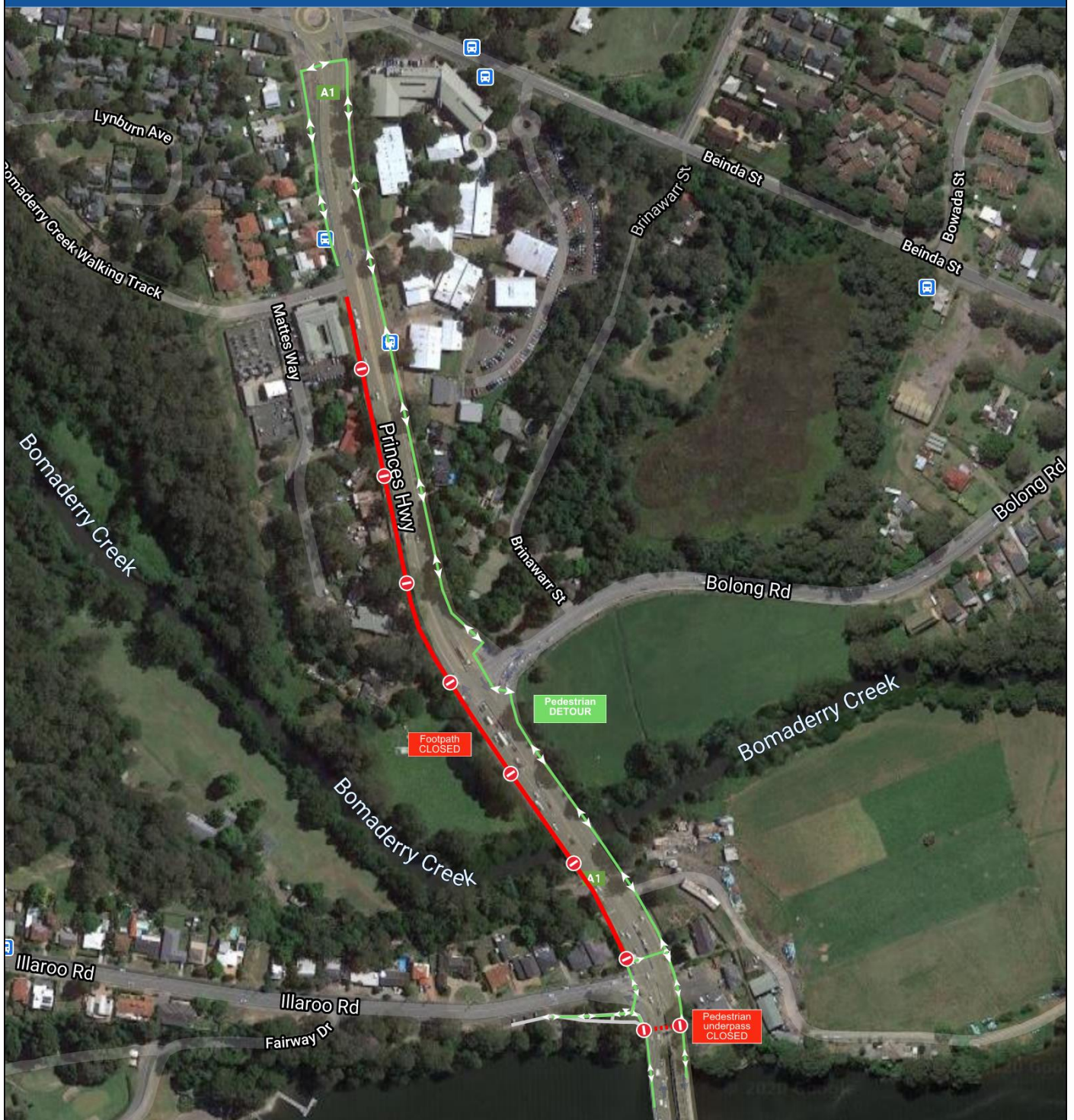
A map of these changes and detour footpaths is over the page.

On the southern side, the footpath approaching the bridges from Scenic Drive remains closed for safety as we build the new bridge. Pedestrians are still able to detour via the new temporary path along Scenic Drive onto Bridge Road and use the stairs to access the foreshore.

There may be times when other short-term pedestrian changes are required. Please follow the direction of traffic controllers and signs.

Thank you for your patience as we carry out this work.

# Princes Highway pedestrian changes



## Contact

If you have any questions, please contact the project team on 1800 331 713 or [NowraBridgeProject@fultonhogan.com.au](mailto:NowraBridgeProject@fultonhogan.com.au) or visit [nswroads.work/NowraBridge](http://nswroads.work/NowraBridge)

For more information on our projects, visit [roads-maritime.transport.nsw.gov.au](http://roads-maritime.transport.nsw.gov.au).



If you need help understanding this information, please contact the Translating and Interpreting Service on 131 450 and ask them to call us on 1800 331 713