

Changed traffic conditions on the Oxley Highway, Mount Seaview

DECEMBER 2022

The NSW Government is funding essential reconstruction work on the Oxley Highway at Mount Seaview to reinstate full access through natural disaster affected areas.

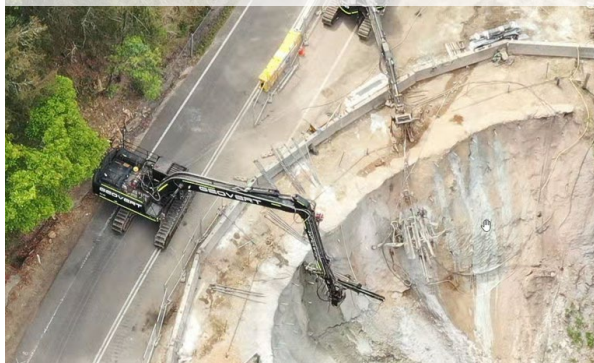
Transport for NSW is continuing major restoration work on the Oxley Highway at Mount Seaview to return the road to pre-2021 flood condition.

We were able to achieve significant progress on six slips around Mount Seaview. This work is expected to remove three sets of traffic lights from the highway by the end of February 2023, reducing journey delays.

From Friday 16 December at 3pm, the temporary road closures, which have been in place Tuesdays to Fridays, will be lifted. We thank the community for their cooperation and patience during this important work.

On-going restoration work will continue in various sections under single lane traffic control, we will keep the community informed of any future planned road closures.

Dewers slip – about 60% complete



Gabion corner - complete



Slip 2A, 2B, 2C - complete



Traffic changes – end of year shut down

All non-essential work will stop from Saturday 24 December 2022 with work restarting Monday 9 January 2023.

Traffic control will remain in place, with some sections under single lane alternating traffic flows and reduced speed limits for the safety of road users.

Motorists should plan their journeys and allow extra travel time.

For the latest traffic updates, you can call 132 701, visit [livetraffic.com](https://www.livetraffic.com) or download the Live Traffic NSW App.

We will keep the community informed of future planned road closures.

Contact

Please note our regular points of contact 1800 653 092 and email region.north@transport.nsw.gov.au will not be monitored between Saturday 24 December and Sunday 8 January 2023.

For traffic incidents on the Oxley Highway, please contact the Traffic Management Centre on 131 700.

During this time, please visit [livetraffic.com](https://www.livetraffic.com) for the latest traffic information. We apologise for any inconvenience.



If you need help understanding this information, please contact the Translating and Interpreting Service on 131 450 and ask them to call us on 1800 653 092.