

April 2021

## Project update – Safety improvements on the Pacific Highway, Charmhaven

The Australian and NSW Governments are investing in a project to improve safety and reduce the risk of crashes between Moala Parade and Lowana Avenue.

Transport for NSW sought feedback from the community in February 2020 on a proposal to improve safety along this 1.7 kilometre section of the Pacific Highway at Charmhaven.

Following a review of feedback, further investigations and design work have been carried out. A project design has now been finalised and incorporates some changes responding to the feedback we received.

The project now includes a U-turn bay which will be built south of Jetty Road. The U-turn bay will allow motorists to safely change their direction of travel to head north on the Pacific Highway. It will also help to minimise travel time impacts associated with the removal of right turn movements onto the highway.

The previously proposed concrete median at Parkside Avenue will be replaced with a wide painted central median which means access for emergency vehicles will be retained. Right turn in and out of Parkside Avenue will still be prohibited for all other vehicles.

The final project involves:

- Building a U-turn bay south of Jetty Road, for motorists wanting to travel north on the Pacific Highway
- Providing dedicated right turn bays for motorists turning into Jetty Avenue and Awaba Avenue
- Installing a wide painted central median to provide greater distance between opposing traffic north of Awaba Avenue
- Banning right turn movements in and out of Parkside Drive, Norah Avenue, Windermere Avenue and Munmorah Avenue. These intersections will become left in and left out only. Access for emergency vehicles will be permitted
- Banning the right turn from the Pacific Highway into Lowana Avenue (the right turn movement from Lowana Avenue onto the Pacific Highway will still be permitted)
- Widening the western side of the Pacific Highway to accommodate the new right turn bays and medians
- Installing new signage and improving line marking.

We have included a copy of the final project design. More information about the project, including a copy of the community consultation report, is available online at [nswroads.work/charmhaven](https://nswroads.work/charmhaven)

Work on the project is expected to start in late April. We will notify the community before work starts.

### Contact

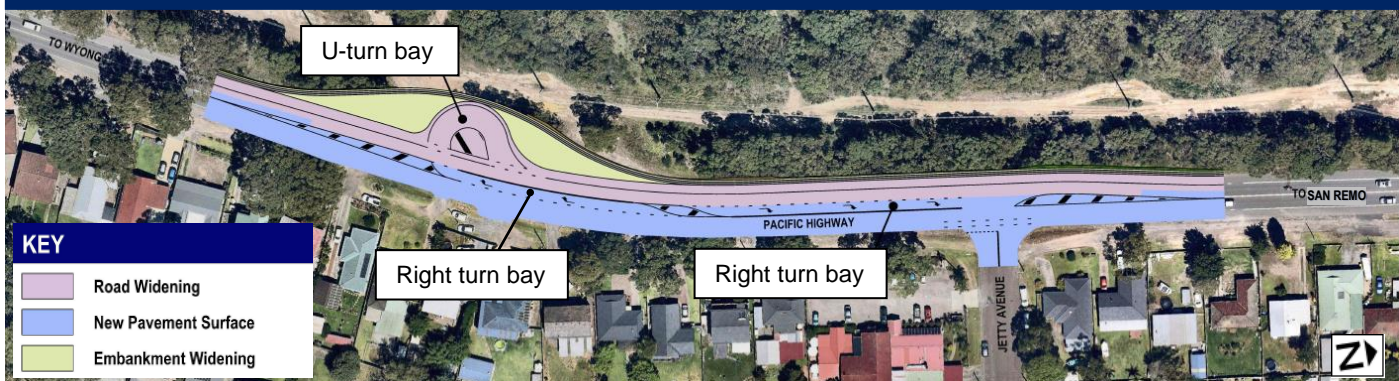
If you have any questions, please contact our Project Manager, David Crowley on 02 4352 5411 or [david.crowley@transport.nsw.gov.au](mailto:david.crowley@transport.nsw.gov.au).



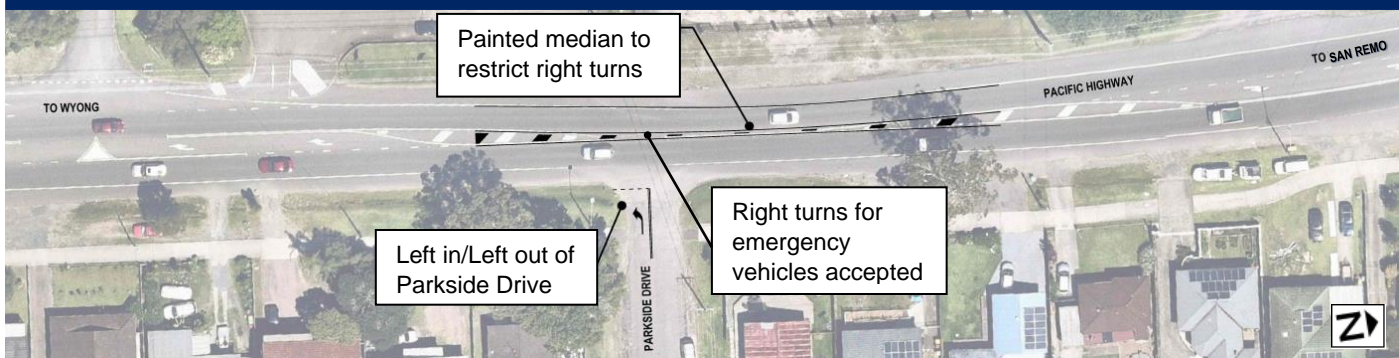
If you need help understanding this information, please contact the Translating and Interpreting Service on 131 450 and ask them to call us on 02 4352 5411.



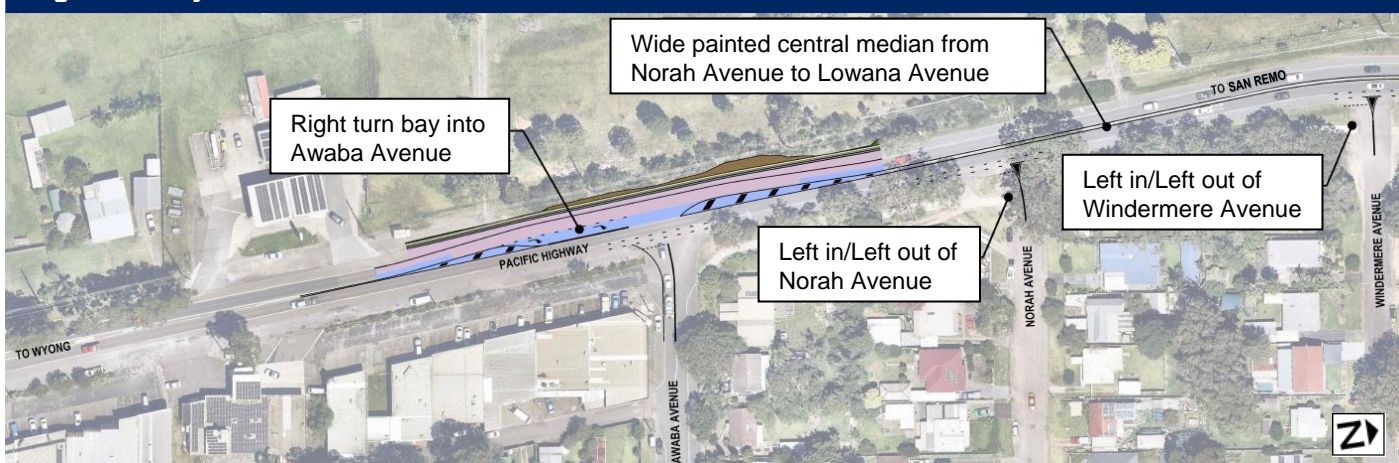
### U-turn facility and right turn bay at Jetty Avenue



### Painted median at Parkside Drive



### Right turn bay at Awaba Avenue



### Wide centreline from Norah Avenue to Lowana Avenue, with turning restrictions

