



Transport
Roads & Maritime
Services

PACIFIC HIGHWAY AND MANNS ROAD UPGRADE

Narara Creek Road at Narara to Parsons
Road at Lisarow

Community and Stakeholder Consultation Report

MAY 2015

Table of contents

1. Background	3
2. The proposal.....	3
3. Consultation approach	4
3.1 Purpose of consultation	4
3.2 Community and stakeholder identification	4
3.3 Consultation activities.....	4
Table 1: Summary of consultation activities.....	5
4. Issues summary	6
4.1 Key issues.....	6
Figure 1: Distribution of comments by key issue	7
Table 2: Key issues and number of comments received	7
4.1.1 Property impact	7
4.1.2 Communication and consultation.....	8
4.1.3 Access	8
4.1.4 Public interest.....	8
4.1.5 Study process	9
4.1.6 Environmental impact.....	9
4.1.7 Traffic.....	9
4.1.8 Stakeholder opinion.....	9
4.1.9 Services and utilities.....	9
4.1.10 Funding and decision making	10
5. Next steps.....	10
Appendices.....	11

1. Background

Roads and Maritime Services is planning a future upgrade of the Pacific Highway and Manns Road between Narara and Lisarow.

Since 2009 Roads and Maritime carried out extensive investigations and community consultation to finalise a preferred route for the upgrade of the Pacific Highway between Narara and Lisarow.

The preferred route along the existing Pacific Highway was approved by the Minister for Roads in February 2013.

The preferred design option for the section of highway between Narara Creek Road at Narara and Parsons Road at Lisarow was displayed for community comment in May and June 2014. This report outlines the consultation activities carried out during the display period and summarises the feedback received.

Roads and Maritime is also planning to upgrade the section of Pacific Highway between Ourimbah Street and Parsons Road at Lisarow. Further details about this project are available at rms.nsw.gov.au/projects.

2. The proposal

The preferred option proposes to widen the Pacific Highway to provide two lanes in each direction to improve traffic flow and safety.

The primary objectives of the proposal include:

- Improved traffic flow along the Pacific Highway and Manns Road
- Improved safety for all road users
- Improved pedestrian and cycle network.

The preferred option displayed in 2014 includes:

- Two lanes in each direction on the Pacific Highway
- Traffic lights to replace the roundabout at the Manns Road and Pacific Highway intersection
- Traffic lights to replace the roundabout at the Manns Road and Narara Valley Drive intersection
- New bridge structures along Manns Road over Narara Creek and the railway line
- Traffic lights on Manns Road at the Narara Creek Road, Adam Street/Reeves Street and Showground Road intersections
- Traffic lights on the Pacific Highway at the Parsons Road, Newling Street, Lenna Street/Pierce Street, Nurra Road/Argyle Avenue and Berrys Head Road intersections.
- New roundabout at Reeves Street and a new local street
- New local roads connecting Carrington and Reeves Streets, and Berrys Head and Wyoming Roads
- Improved pedestrian and cycle paths along and across the Pacific Highway and Manns Road
- Synchronisation of traffic lights, with priority given to traffic flows along the Pacific Highway and Manns Road

There were several major changes made to the design since the 2012 public display to improve access to the connecting local roads while maximising traffic flow along the Pacific Highway and Manns Road.

The changes considered community feedback received and further investigations. They include:

- Traffic lights to replace the roundabout at the Manns Road and Pacific Highway intersection.
- Traffic lights to replace the roundabout at the Manns Road and Narara Valley Drive intersection.
- Building traffic lights at the Pacific Highway and Berrys Head Road intersection.
- New roundabout at Reeves Street and a new local street.
- New bridge structures along Manns Road over Narara Creek and the railway line.
- Building new local link roads between Carrington and Reeves Streets, and between Berrys Head and Wyoming Roads.

3. Consultation approach

3.1 Purpose of consultation

Roads and Maritime carried out consultation in May and June 2014. The purpose of the consultation activities was to update local residents, businesses, road users and the community on the preferred option for the upgrade and to provide the community and stakeholders with the opportunity to provide feedback.

The consultation objectives were to:

- Inform the community and stakeholders of the proposal and possible impacts
- Seek feedback on the proposal and issues of concern from the community and stakeholders for consideration by Roads and Maritime in developing the concept design and review of environmental factors
- Continue to build the database of interested and concerned community members who Roads and Maritime can continue to engage with during the proposal's further development.

3.2 Community and stakeholder identification

A number of stakeholders were identified to be engaged as part of the consultation process. These stakeholders included:

- **Directly affected stakeholders** including nearby property owners, residents, businesses and those directly affected by the upgrade
- **Community members and groups** including road users, cyclists, pedestrians and users of local facilities and services within the wider Central Coast area
- **Local services and facilities** including transport groups and companies
- **Emergency services**
- **Utility providers**
- **Government agencies and representatives** including Gosford City Council and elected representatives.

3.3 Consultation activities

The consultation period started on 12 May and closed on 9 June 2014, with an extension of time for community comments provided until 20 June 2014.

The community were invited to contact Roads and Maritime and leave comments and submissions by:

- In person: At the community information sessions
- Email: Central.Coast.Office@rms.nsw.gov.au
- Telephone: 4379 7001
- Mail: Roads and Maritime Services Central Coast Office
PO Box 766
Woy Woy NSW 2256

The communication and consultation activities carried out are outlined in Table 1.

Table 1: Summary of consultation activities

Consultation activity	Details
Information sessions	<p>General information was provided at a staffed display held at the Gosford/Narara Neighbourhood Centre Hall on Tuesday 27 May 2014 from 4pm to 9pm. This session was attended by around 43 local residents and stakeholders.</p> <p>Two information sessions for property owners were held at the Gosford/Narara Neighbourhood Centre Hall on Monday 26 May 2014 at 11am to 2pm and 4pm to 7pm. Roads and Maritime property staff were available for individual meetings with property owners. These sessions were attended by around 115 local residents and stakeholders.</p>
Community update	<p>A community update was delivered to about 9,500 properties including residences and businesses in the Narara and Lisarow area. A copy of the update is provided at Appendix A. The community update with an accompanying letter was directly mailed to stakeholders whose property may be partially or totally acquired by Roads and Maritime. An additional stakeholder letter was directly mailed to residents in the Wyoming area to seek further feedback on the proposal including the proposed new connecting road at Berrys Head Road and Wyoming Road.</p>
Roads and Maritime website	<p>The proposal was available to view on the Roads and Maritime website at rms.nsw.gov.au and is currently active. The project page URL is: http://www.rms.nsw.gov.au/projects/central-coast/pacific-highway/narara-lisarow/index.html</p>
Static displays	<p>The proposal was displayed with copies of the community update at:</p> <ul style="list-style-type: none">• Service NSW Centre at Gosford• Road and Maritime Central Coast Office at Woy Woy• Office of the Members for The Entrance and Gosford• Roads and Maritime website rms.nsw.gov.au.
Newspaper advertising	<p>Advertising was placed in the Central Coast Express Advocate on 16 and 23 May 2014. A copy of the advertisement is available at Appendix B.</p>
Media activities	<p>A media release announcing the public display and inviting comments from the community was issued on 12 May 2014. A copy of the media release is available at Appendix C.</p>
Design Options Report	<p>The design options report was published on the Roads and Maritime website in May 2014.</p>

4. Issues summary

The preferred option was on public display between 12 May and 9 June 2014. During the public display Roads and Maritime received 189 submissions from stakeholders and community members including:

- 55 written submissions
- 11 telephone calls
- 123 discussions at the information sessions.

A total of 302 comments were received and 10 key issues were identified. Some submissions contained multiple comments and raised multiple issues.

It is important to note Roads and Maritime follows issues based decision making. This means that although preferences on options are noted, Roads and Maritime examines the issues raised throughout the consultation period using the fact based assessment process to assist in identifying a preferred option.

4.1 Key issues

The most commonly raised issues included:

- Property impacts (22 per cent). This category includes land acquisition, property value and general impacts to property.
- Access (21 per cent). This category includes private property access, parking, pedestrian access and local road network impacts.
- Communication and consultation (21 per cent). This category includes comments relating to the communication and consultation process for the project such as requests for additional information.
- Public interest (12 per cent). This category includes safety, open space, health and air quality impacts.
- Study process (8 per cent). This category includes suggestions for additional scope for the study.

Most of the responses received showed general appreciation for the need for the project and supported the proposal. The feedback received has informed the concept design and specialist studies currently underway as part of the review of environmental factors.

Details of the comments received are provided in Figure 1 and Table 2.

Figure 1: Distribution of comments by key issue

The following graph illustrates the range of comments and issues received on the proposal.

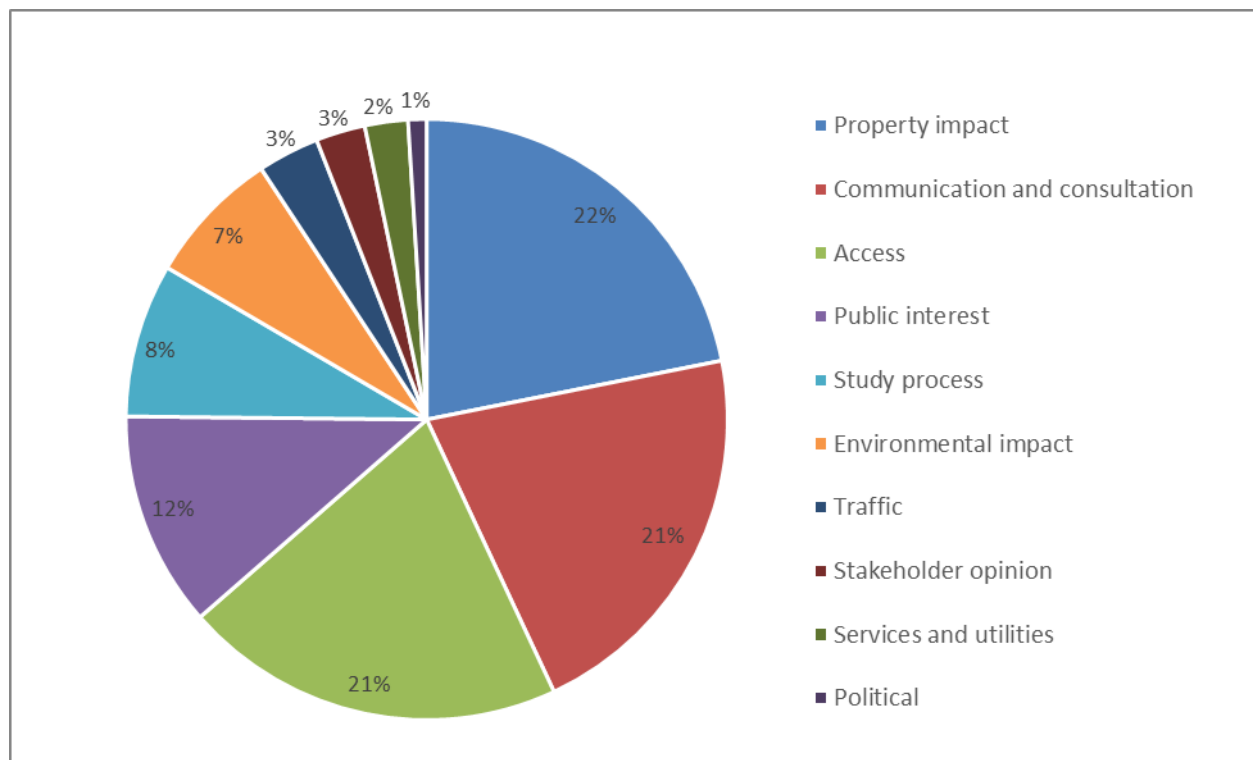


Table 2: Key issues and number of comments received

Key issue	Number of comments made about this issue
Property impacts	66
Communication and consultation	64
Access	62
Public interest	35
Study process	25
Environmental impact	22
Traffic	10
Stakeholder opinion	8
Services and utilities	7
Funding and decision making	3
Total comments	302

4.1.1 Property impacts

Many respondents raised property-related concerns including land acquisition, property value and general impacts to property.

Roads and Maritime response

Roads and Maritime is working directly with potentially affected property owners in relation to property acquisition and compensation. The property acquisition process is governed by the Land Acquisition (Just Terms Compensation) Act 1991 which provides the basis for assessing compensation. Roads and Maritime will contact individual property owners to discuss the specific impact on each property as the project proceeds and more detail is known.

4.1.2 Communication and consultation

A large number of respondents made comments about the communication and consultation process, such as requests for additional information.

Roads and Maritime response

Roads and Maritime is committed to providing accurate and timely information about the project to interested and potentially affected stakeholders. Roads and Maritime staff responded to requests for information from stakeholders and the community throughout the public display period via telephone, email and in person at the community information sessions. Interested parties that may have unresolved questions are encouraged to contact Roads and Maritime Services at the following points of contact:

- Email: Central.Coast.Office@rms.nsw.gov.au
- Telephone: 4379 7001

Work is underway to prepare the concept design and environmental assessment, which are expected to be displayed for stakeholder and community comment in 2016. A timeframe for the construction of the project has not yet been confirmed.

Roads and Maritime will keep stakeholders and the community updated as the project progresses through project updates, letters, Roads and Maritime website, advertising and the email mailing list.

4.1.3 Access

A number of comments were made about access to private properties during and after construction, pedestrian access and access to local road networks.

Roads and Maritime response

The proposal includes traffic lights at several intersections and new connecting local roads for controlled access between the Pacific Highway and local road network.

Shared pedestrian and cycle paths are proposed along the Pacific Highway southbound and Manns Road northbound to improve the cycle path network. Access will be reinstated to existing shared paths where possible.

Roads and Maritime will work with all residents and property owners who are directly affected by the proposed upgrade. During construction, mitigation measures will be implemented where possible in consultation with property owners to provide entry and exit options where property access may be affected.

4.1.4 Public interest

Several comments were made by respondents about issues in the public interest such as safety, open space, health and air quality impacts.

Roads and Maritime response

The project is designed to accommodate predicted traffic increases as a result of population growth on the Central Coast. A road safety audit will be carried out during the concept design stage and any identified safety issues will be taken into consideration when developing the project.

An air quality assessment will be completed as part of the environmental assessment with appropriate mitigation measures put in place for any identified air quality issues. This information will be published for community feedback as part of the public display of the environmental assessment in 2016.

Existing and future open space options will be considered as part of the environmental assessment.

4.1.5 Study process

A number of respondents made comments with additional suggestions for inclusion in the proposed upgrade including new link or connecting roads, or removal of a link road.

Roads and Maritime response

Many of the submissions received were outside the scope of the current project proposal. A traffic model was completed for the project with the number of traffic lights proposed as part of the upgrade to improve the existing road connectivity and provide better access for the community. Additional roundabouts have not been considered as they are not appropriate for roads with high volumes of traffic entering the Pacific Highway. The proposed link road between Wyoming Road and Berrys Head Road was removed following further investigation and consultation.

4.1.6 Environmental impact

A number of respondents raised potential environmental issues including flooding, impacts on flora and fauna, noise and heritage concerns.

Roads and Maritime response

Roads and Maritime is carrying out an environmental assessment to assess potential impacts of the proposal and identify mitigation activities. The assessment involves detailed studies including:

- Flora and fauna studies
- Visual impact assessment
- Flood impact assessment
- Detailed noise assessment.

Protection of local roads and private property from flooding is a project objective and Road and Maritime will be carefully assessing potential flooding impacts for this proposal.

Information about identified potential impacts and mitigation activities will be available in the review of environmental factors report which is expected to be displayed for community and stakeholder comment in 2016.

4.1.7 Traffic

Many comments received related to concerns about increased traffic or the impact of the proposed upgrade on local traffic.

Roads and Maritime response

A traffic management plan will be developed as part of the environmental assessment to investigate the impact of the proposal on traffic conditions. The proposed traffic lights would provide controlled, safe access to connecting local roads and would be synchronised with priority given to traffic flows along the Pacific Highway and Manns Road.

4.1.8 Stakeholder opinion

A number of comments showed general support for the proposed upgrade.

Roads and Maritime response

Roads and Maritime notes the comments in support of the proposal.

4.1.9 Services and utilities

A number of respondents expressed interest in how the upgrade would affect the work of emergency services, waste management and flood mitigation.

Roads and Maritime response

Roads and Maritime notes these comments. Roads and Maritime will continue to work with Gosford and Wyong Councils as planning continues for the project.

4.1.10 Funding and decision making

A small number of respondents questioned how the upgrade would be funded and were concerned that the proposal had been designed to favour commercial entities.

Roads and Maritime response

Planning for the project is being funded by the NSW Government. Funding for construction has not been confirmed at this stage. Roads and Maritime follows issues based decision making. This means that although preferences on options are noted, Roads and Maritime examines the issues raised throughout the consultation period using a fact based assessment process to assist in identifying a preferred option.

5. Next steps

Feedback received during the public display showed general appreciation for the need for the project and support for the proposal. The feedback received is informing the concept design and specialist studies currently underway as part of the review of environmental factors process.

Roads and Maritime will continue to work with potentially affected stakeholders and keep the community informed on the project as it develops. Roads and Maritime will:

- Continue to develop the concept design and make appropriate changes based on feedback and further investigations
- Inform the community and stakeholders of consultation outcomes and next steps for the proposal via publication of this report
- Ensure that community and stakeholder comments and suggestions are considered in the ongoing development of the project
- Continue to engage the community and stakeholders and keep them informed as the project develops
- Display the concept design and review of environmental factors for community and stakeholder comment in 2016.

Appendices

Appendix A: Community update

Appendix B: Newspaper advertisement

Appendix C: Media release

Appendix A Community Update

Upgrading the Central Coast road network between Narara and Lisarow



Pacific Highway and Manns Road upgrade between Parsons Road at Lisarow and Narara Creek Road at Narara.

Roads and Maritime Services is planning a future upgrade of the Pacific Highway and Manns Road between Narara and Lisarow.

This community update contains information on the preferred option for the section of road between Narara Creek Road at Narara and Parsons Road at Lisarow.

Stakeholders and the community are invited to comment on the preferred option by **9 June 2014**. Roads and Maritime will consider this feedback in preparing the concept design.

The preferred option for the section of highway between Ourimbah Street and Parsons Road at Lisarow was displayed for community feedback in November 2013. For further information the community update is available for viewing at rms.nsw.gov.au.

Background

Roads and Maritime has carried out extensive investigations and community consultation in order to finalise a preferred route for the upgrade of the Pacific Highway between Narara and Lisarow.

The preferred route along the existing Pacific Highway was approved by the NSW Minister for Roads and Freight in February 2013.

Roads and Maritime has since prepared a preferred strategic design for the section of road between Narara Creek Road at Narara and Parsons Road at Lisarow. The preferred option considers community comments received during the public display period in 2012.

This community update provides information on changes to the design as part of the route selection process. Roads and Maritime is seeking community comment in order to finalise the strategic design.

Pacific Highway and Manns Road upgrade between Narara Creek Road at Narara and Parsons Road at Lisarow

Features

The preferred option includes:

- Two lanes in each direction on the Pacific Highway
- Traffic lights to replace the roundabout at the Manns Road and Pacific Highway intersection
- Traffic lights to replace the roundabout at the Manns Road and Narara Valley Drive intersection
- New bridge structures along Manns Road over Narara Creek and the railway line
- Traffic lights on Manns Road at the Narara Creek Road, Adam Street/Reeves Street and Showground Road intersections
- Traffic lights on the Pacific Highway at the Parsons Road, Newling Street, Lenna Street/Pierce Street, Nurra Road/Argyle Avenue and Berrys Head Road intersections
- New roundabout at Reeves Street and a new local street
- New local roads connecting Carrington and Reeves Streets, and Berrys Head and Wyoming Roads
- Improved pedestrian and cycle paths along and across the Pacific Highway and Manns Road
- Synchronisation of traffic lights, with priority given to traffic flows along the Pacific Highway and Manns Road.

Benefits

Key benefits of the preferred option include:

- Improved traffic flow on the Pacific Highway and Manns Road
- Improved safety for all road users
- Improved pedestrian and cycle network.

Design changes since the 2012 public display

There have been several changes made to the design since the 2012 public display to improve access to the connecting local roads while maximising traffic flow along the Pacific Highway and Manns Road.

The changes consider community feedback received and further investigations. They include:

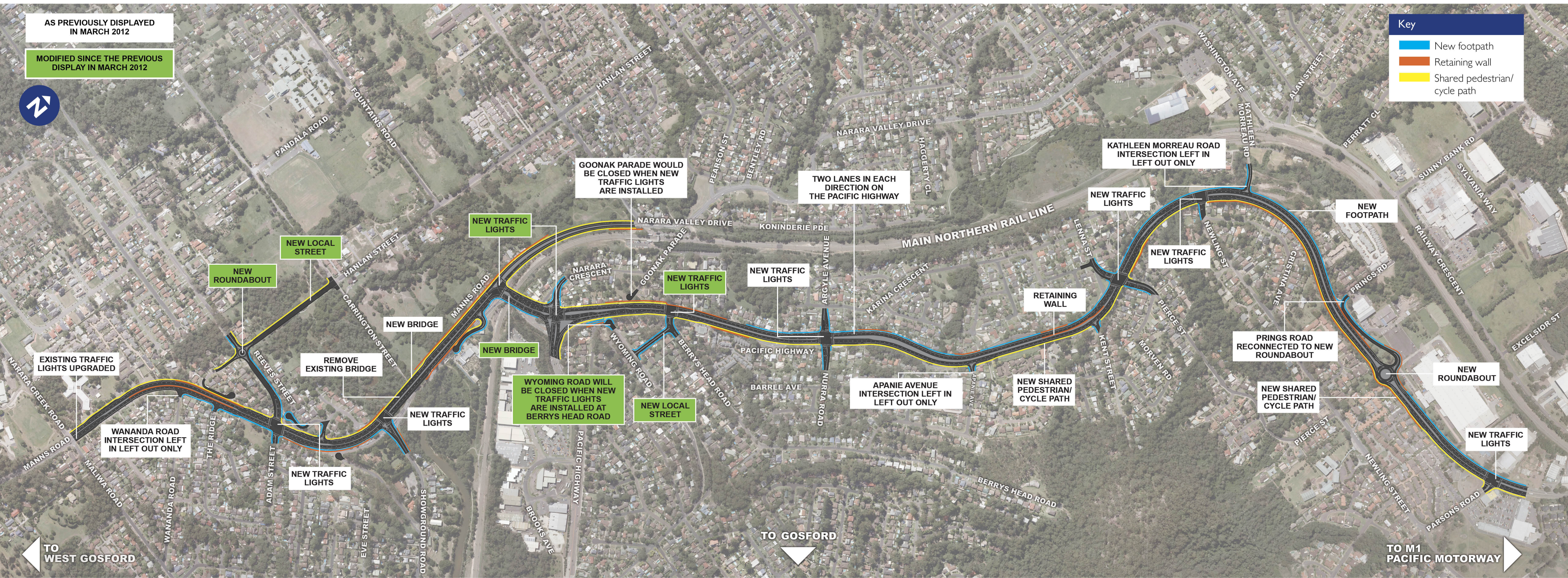
- Traffic lights to replace the roundabout at the Manns Road and Pacific Highway intersection
- Traffic lights to replace the roundabout at the Manns Road and Narara Valley Drive intersection
- Building traffic lights at the Pacific Highway and Berrys Head Road intersection
- New roundabout at Reeves Street and a new local street
- New bridge structures along Manns Road over Narara Creek and the railway line
- Building new local link roads between Carrington and Reeves Streets, and between Berrys Head and Wyoming Roads.

Further information on the option investigations is provided in the Design Options Report February 2014, which is available for viewing at rms.nsw.gov.au.

Property impacts

The preferred option involves road widening and construction of several retaining walls along the route, which would impact some properties. Full or partial property acquisitions would be required in some instances. Roads and Maritime will work closely with potentially affected property owners on identified property impacts.

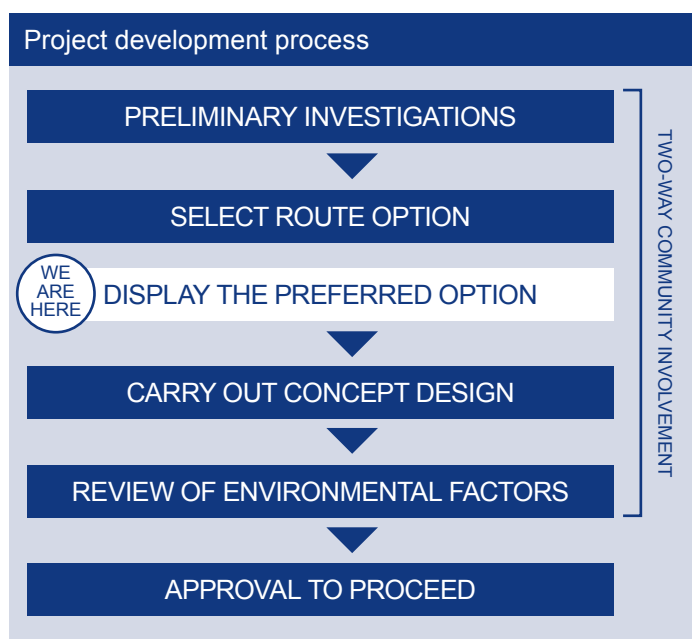
Strategic design for Pacific Highway and Manns Road upgrade
between Narara Creek Road at Narara and Parsons Road at Lisarow



Next steps

Stakeholders and the community are invited to comment on the preferred option by **9 June 2014**. Roads and Maritime will consider this feedback in order to prepare the concept design and carry out environmental impact assessments.

A construction timeframe has not yet been identified. Staging options for construction delivery would be looked at as part of further investigations.



Please send us your feedback by:

Phoning: Roads and Maritime project team
on (02) 4379 7001 (during business hours)

Emailing: Central.Coast.Office@rms.nsw.gov.au

Writing to: Roads and Maritime Services
Central Coast Office
PO Box 766
Woy Woy NSW 2256

Community information session

The community is invited to view the plans and find out general information at a staffed display to be held on **Tuesday 27 May 2014 from 4pm to 7pm at:**

Gosford/Narara Neighbourhood Centre Hall
2-12 Pandala Road
Narara NSW 2250

Information sessions for potentially affected property owners

Two information sessions for potentially affected property owners will be held on **Monday 26 May 2014 from 11am to 2pm and 4pm to 7pm at:**

Gosford/Narara Neighbourhood Centre Hall
2-12 Pandala Road
Narara NSW 2250

Roads and Maritime staff will be available to discuss potential property impacts with property owners. Roads and Maritime is contacting potentially affected property owners directly with more information on these sessions.

Comments on the preferred option are invited by **9 June 2014**.

For more information

Visit rms.nsw.gov.au

This paper is • carbon neutral • Australian-made • recycled fibre • elemental chlorine free • pulp derived from sustainably managed sources



Privacy Your personal information in correspondence is collected for the sole purpose of assisting in the assessment of the proposal. All information received, including names and addresses of respondents, may be published in subsequent assessment documents unless a clear indication is given in the correspondence that such information is not to be published. Otherwise the RMS will only disclose your personal information, without your consent, if authorised by law. Your personal information will be held by the RMS at Central Coast Office, Upper Level, The Pavilion, 29-37 George Street, Woy Woy, NSW, 2256. You have the right to access and correct the information if you believe that it is incorrect.

Appendix B Newspaper Advertisement



Transport
Roads & Maritime
Services

Roads and Maritime Services is planning a major upgrade of the Pacific Highway and Manns Road between Narara Creek Road at Narara and Parsons Road at Lisarow to improve traffic flow and safety.

You are invited to view the plans and find out general information at a staffed display:

Where: Gosford/Narara Neighbourhood Centre Hall,
2-12 Pandala Road, Narara

When: 27 May 2014 from 4pm to 7pm.

The proposal and community update are available at rms.nsw.gov.au, the Service NSW Centre at Gosford and the Roads and Maritime Woy Woy office.

Please submit your feedback on the proposed upgrade by **Monday 9 June 2014**.

Your feedback will be considered by Roads and Maritime in preparing the concept design and environmental impact assessments.

For more information call: (02) 4379 7001,
email: Central.Coast.Office@rms.nsw.gov.au or
visit rms.nsw.gov.au/roadprojects

Appendix C Media Release



Ray Williams MP

Member for Hawkesbury
Parliamentary Secretary for Transport and Roads

MEDIA RELEASE

13 May 2014

HAVE YOUR SAY ON FUTURE UPGRADE OF PACIFIC HIGHWAY AT NARARA

Roads and Maritime Services is planning a future upgrade of the Pacific Highway between Narara and Lisarow.

The proposal for a section of the Pacific Highway and Manns Road between Narara Creek Road at Narara and Parsons Road at Lisarow is now on public display for community comment until 6 June.

"The NSW Government has allocated \$2 million this financial year to progress planning for the upgrade," Parliamentary Secretary for Transport and Roads Ray Williams MP said.

"The proposal involves widening the Pacific Highway and Manns Road to provide two lanes in each direction to improve traffic flow, reduce travel times and improve safety for all road users."

The community is invited to view plans and comment on the preferred option which can be viewed at the Service NSW centre at Gosford and online at rms.nsw.gov.au.

In addition to the public display, a community information session will be held on 27 May between 4pm and 7pm at the Gosford/Narara Neighbourhood Centre Hall, located on Pandala Road at Narara.

"This session will enable the community to find out general information and ask questions of Roads and Maritime staff," Mr Williams said.

Separate information sessions for potentially affected property owners will be held on 26 May. Property owners have been contacted directly with details on these sessions.

The community has until 6 June to provide feedback and all comments will be considered in preparation of the concept design and environmental impact assessments.

A proposal to upgrade the section of Pacific Highway between Ourimbah Street and Parsons Road at Lisarow was displayed for community feedback in November 2013.

Comments received are now being considered to prepare the concept design and environmental impact assessment.

Media: Ray Williams 8882 9555