

## Night work on the Pacific Highway duplication at Lisarow from Tuesday 28 April

The NSW Government is investing \$178 million to duplicate the Pacific Highway between Ourimbah Street and Parsons Road, Lisarow to improve traffic flow and safety.

We are working between 7am and 6pm on weekdays and 8am and 1pm on Saturdays. Some out of hours work is required for the safety of motorists and workers and to ensure work on the project is carried out as efficiently as possible.

Night work will be carried out from **Tuesday 28 April** between **6pm and 7am Sunday to Thursday** until the end of May.

Night work will include:

- bridge piling near the intersection of Railway Crescent and the Pacific Highway
- services relocation near the intersection of the Pacific Highway and The Ridgeway, on Tuggerah Street and Macdonalds Road and in the carpark at Lisarow Station
- delivery and collection of equipment from work sites on Railway Crescent
- access to site compounds on Railway Crescent and Macdonalds Road.

We have included a map to show the location and type of work in each area.

### How will work affect you?

The night work will involve the use of machinery which generates noise.

We will make every effort to minimise noise by completing noisier activities earlier in the night and turning off machinery and vehicles when not in use. Noise blankets will also be used around stationary plant, where possible.

Directly affected residents will be contacted and advised of the likely impact and what we are doing to minimise disruption during the work.

### Traffic changes

Lane closures and traffic control will be in place during the work and may affect travel times. There may be short term intermittent stops and a temporary 40 km/h reduced speed limit will be in place through the work zones for the safety of motorists and workers.

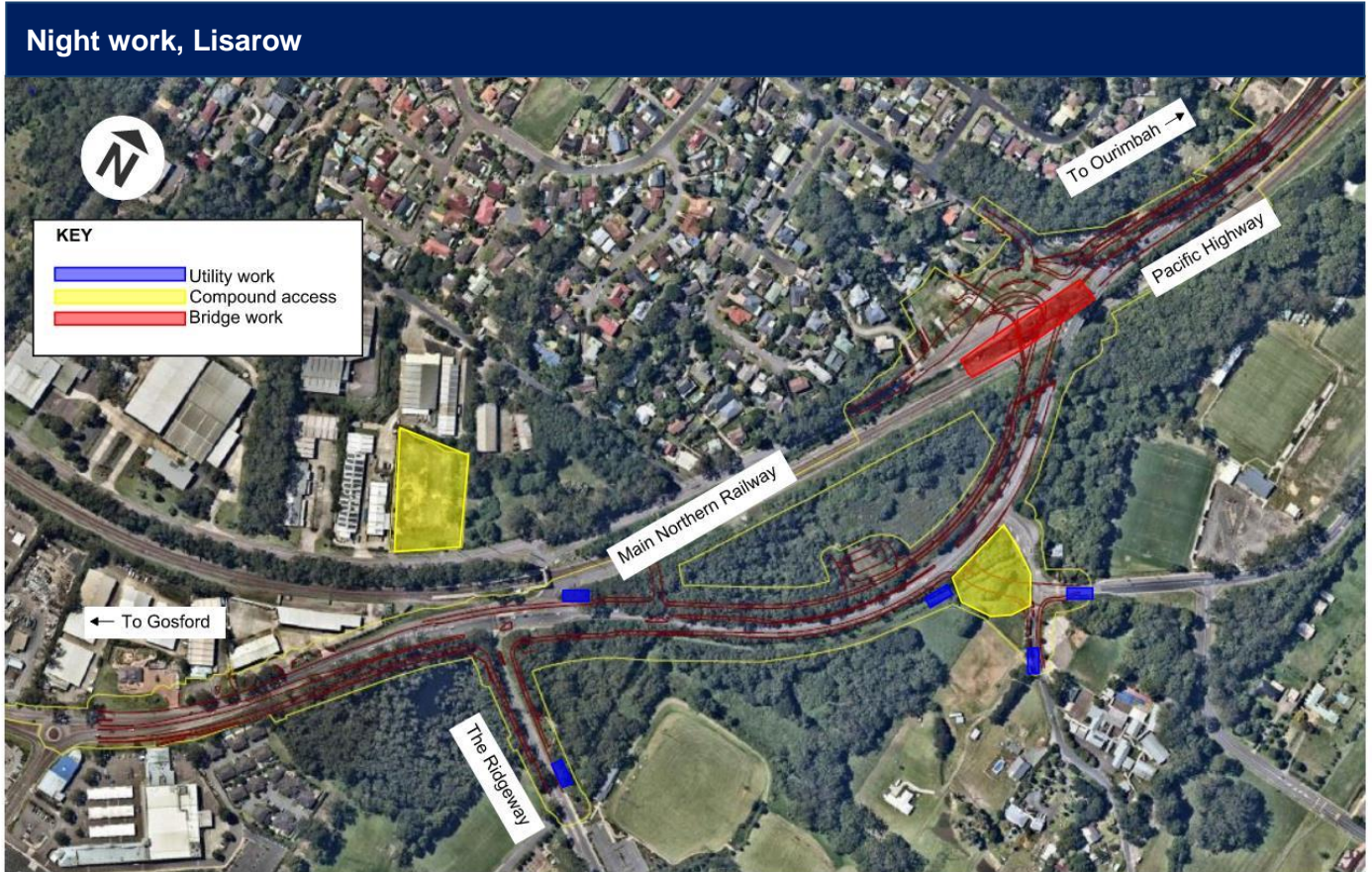
#### **Railway Crescent will be restricted to one lane during bridge piling work**

Please keep to speed limits and follow the direction of traffic controllers and signs. For the latest traffic updates, you can call 132 701, visit [livetraffic.com](http://livetraffic.com) or download the Live Traffic NSW App.

## Contact

If you have any questions, or complaints please contact the project information line on 1800 560 667. For more information on our projects, visit [rms.nsw.gov.au](http://rms.nsw.gov.au).

We thank you for your patience while this work is carried out.



If you need help understanding this information, please contact the Translating and Interpreting Service on 131 450 and ask them to call us on 1800 560 667