

Night work on the Pacific Highway duplication at Lisarow from Sunday 17 January

The NSW Government is investing \$178 million to duplicate the Pacific Highway between Ourimbah Street and Parsons Road, Lisarow to improve traffic flow and safety.

We are working between **7am and 6pm** on **weekdays** and **8am and 1pm** on **Saturdays**. Some out of hours work is required for the safety of motorists and workers and to ensure work on the project is carried out as efficiently as possible.

Night work will be carried out Sunday to Thursday nights between **17 January and 31 January** between **6pm and 7am**, weather permitting.

Residents will be directly notified in advance of any out of hours work near their property.

Night work will include:

- asphaltting for the new section of the Pacific Highway where it joins the existing highway near Lisarow Station and south of Tuggerah Street.
- services relocation work on the highway near The Ridgeway and near the southern tie in on Railway Crescent
- accessing site compounds on Railway Crescent, Macdonalds Road and the northern compounds on the Pacific Highway.

We have included a map to show the location and type of work in each area.

How will work affect you?

The night work will involve the use of machinery which generates noise.

We will make every effort to minimise noise by completing noisier activities earlier in the night and turning off machinery and vehicles when not in use. Noise blankets will also be used around stationary plant, where possible.

Directly affected residents will be contacted and advised of the likely impact and what we are doing to minimise disruption during the work.

Traffic changes

Traffic on the Pacific Highway will be realigned onto a section of new road between Lisarow Station and Tuggerah Street. Pedestrian access will be maintained. VMS boards will also be in place to notify motorists of these changes.

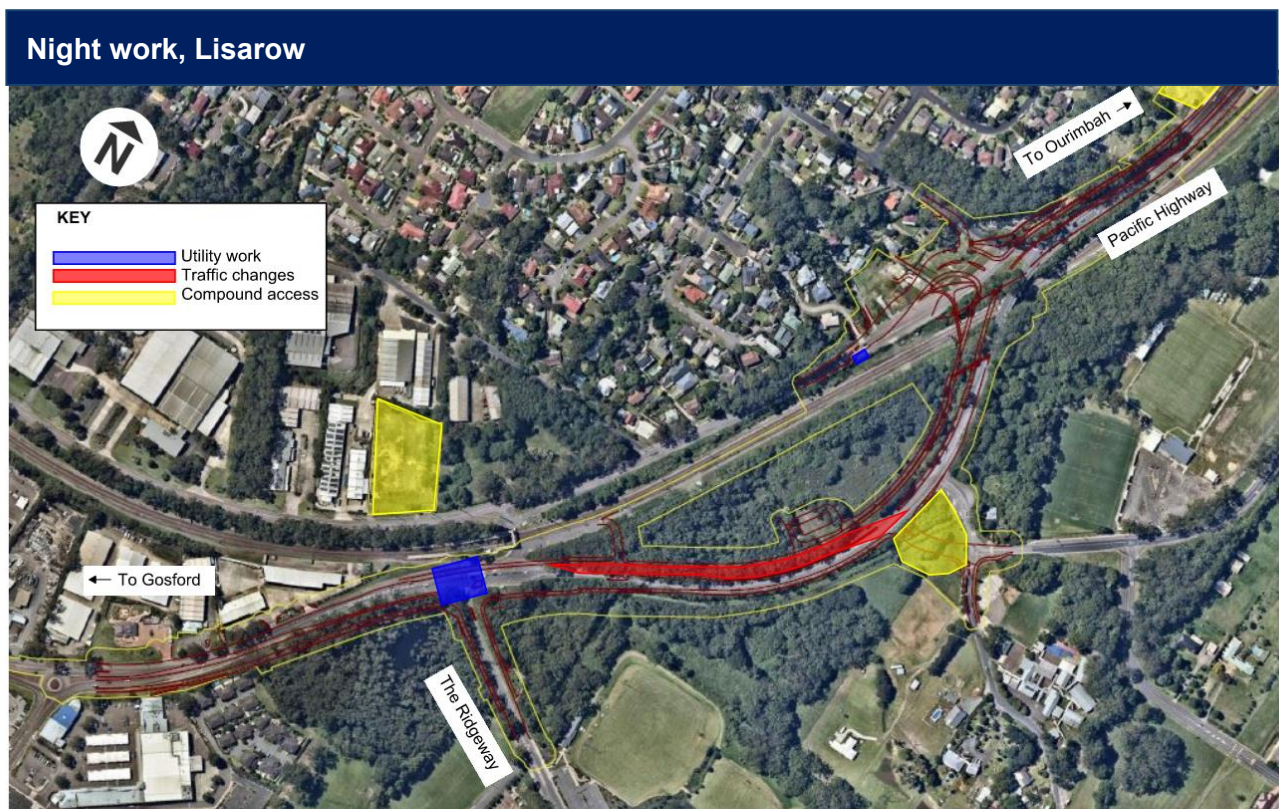
Lane closures and traffic control will be in place during the work and may affect travel times. There may be short term intermittent stops and a temporary 40 km/h reduced speed limit will be in place through the work zones for the safety of motorists and workers.

Please keep to speed limits and follow the direction of traffic controllers and signs. For the latest traffic updates, you can call 132 701, visit livetraffic.com or download the Live Traffic NSW App.

Contact

If you have any questions, or complaints please contact the project information line on 1800 560 667. For more information on our projects, visit rms.nsw.gov.au.

We thank you for your patience while this work is carried out.



If you need help understanding this information, please contact the Translating and Interpreting Service on 131 450 and ask them to call us on 1800 560 667