

## Out of hours work on the Pacific Highway duplication at Lisarow from Friday 1 April

The NSW Government is investing \$178 million to duplicate the Pacific Highway between Ourimbah Street and Parsons Road, Lisarow to improve traffic flow and safety.

We are working between **7am and 6pm** on **weekdays** and **8am and 1pm** on **Saturdays**. Some out of hours work is required for the safety of motorists and workers to ensure work on the project is carried out as efficiently as possible.

Night work will be carried on the upgrade between **1 April and 30 April 2022** between **8pm and 5am Sunday to Thursday**, weather permitting. We will also be working on **Saturday between 8am and 5pm**.

Below is a list of the upcoming planned out of hours work for April:

Activity	Duration
Utility services relocation on The Ridgeway near the intersection of the Pacific Highway and near Lisarow High School	1 night
Building and concreting new access into BJ Howes Metaland	2 x Saturdays 3 nights 1 night
Asphalting on the Pacific Highway between Parsons Road and The Ridgeway	3 nights
Delivery of plant and equipment to site and accessing site compounds on Railway Crescent, Macdonalds Road and the northern compounds on the Pacific Highway	

We have included a map to show the location and type of work in each area.

### How will the work affect you?

The out of hours work will involve the use of machinery which generates noise.

We will make every effort to minimise noise by completing noisier activities earlier in the night and turning off machinery and vehicles when not in use. Noise blankets will also be used around stationary plant, where possible.

**Directly affected residents will be contacted and advised of the likely impact and what we are doing to minimise disruption during the work.**

## Traffic changes

Lane closures and traffic control will be in place during the work and may affect travel times. There may be short term intermittent stops and a temporary 40 km/h reduced speed limit will be in place through the work zones for the safety of motorists and workers.

Please keep to speed limits and follow the direction of traffic controllers and signs. For the latest traffic updates, you can call 132 701, visit [livetraffic.com](http://livetraffic.com) or download the Live Traffic NSW App.

## Easter break

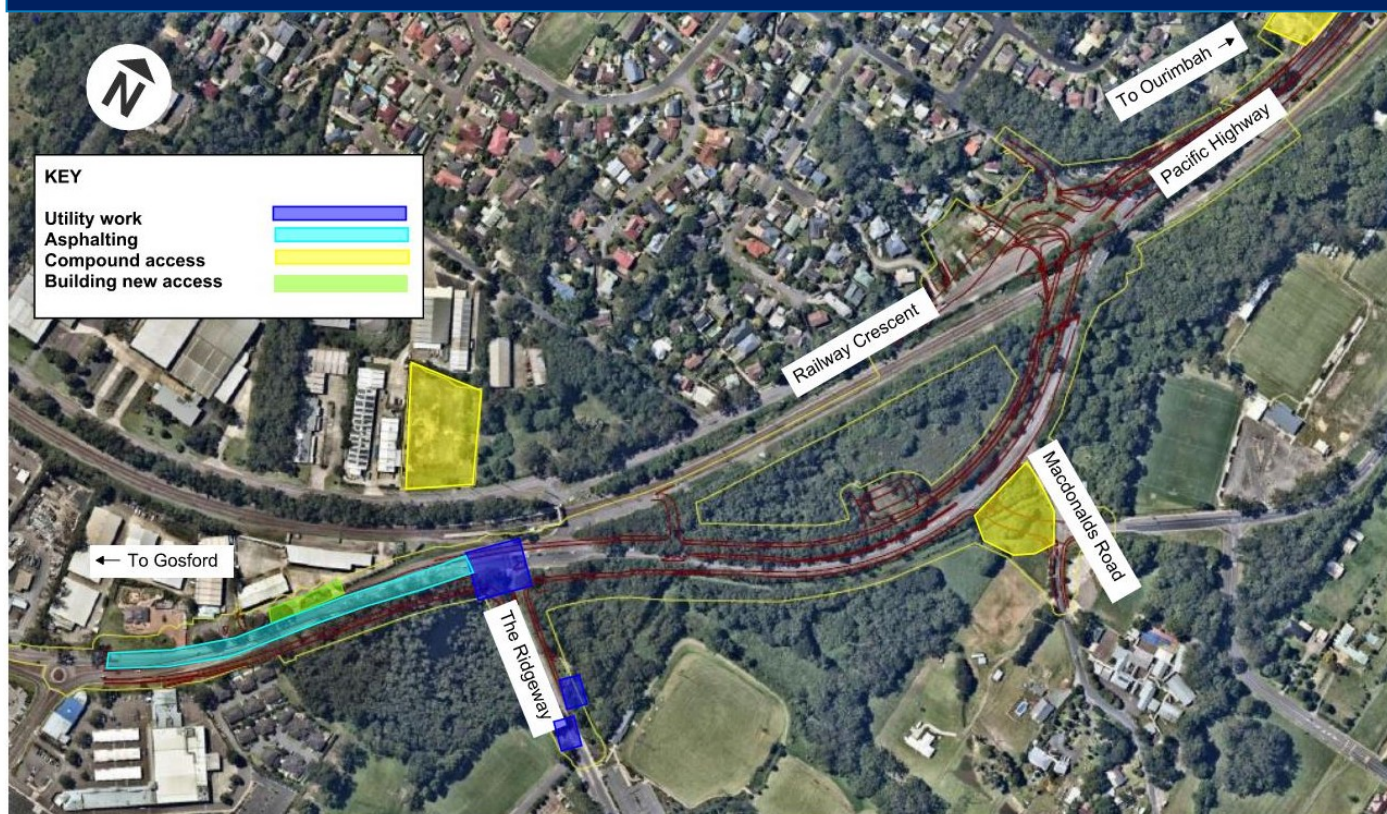
No work will be carried out during the Easter period from Friday 15 April to Monday 18 April 2022. Standby crews will be available during this time and site security, including surveillance cameras, will be in place.

## Contact

If you have any questions, or complaints please contact the project information line on 1800 560 667. For more information on our projects, visit [roads-maritime.transport.nsw.gov.au](http://roads-maritime.transport.nsw.gov.au)

We thank you for your patience while this work is carried out.

### Out of hours work, Lisarow



If you need help understanding this information, please contact the Translating and Interpreting Service on 131 450 and ask them to call us on 1800 560 667.