

Night work on the Pacific Highway, Lisarow from Sunday 2 June

The NSW Government is investing \$178 million to duplicate the Pacific Highway between Ourimbah Street and Parsons Road, Lisarow to improve traffic flow and safety.

We are working between 7am and 6pm on weekdays and 8am and 1pm on Saturdays. Some out of hours work is required for the safety of motorists and workers and to ensure work on the project is carried out as efficiently as possible.

Night work will be carried out during **June** between **6pm and 7am Sunday to Thursday**, weather permitting.

Residents and businesses will be directly notified in advance of any out of hours work near their property.

Night work will include:

- locating and relocating utility services
- removing vegetation near the corner of the Pacific Highway and The Ridgeway and near Lisarow railway station
- geotechnical investigations next to the Highway near Lisarow Cemetery
- site controls including pumping water next to the highway between Macdonalds Road and The Ridgeway
- removing existing medians and building temporary road surfaces on the highway near the Parsons Road roundabout and on the Pacific Highway near Ourimbah Street
- accessing site compounds on Railway Crescent and on the highway near Ourimbah Street

We have included a map to show the location and type of work in each area.

How will work affect you?

The night work will involve the use of machinery which generates noise.

We will make every effort to minimise noise by completing noisier activities earlier in the night and turning off machinery and vehicles when not in use. Noise blankets will also be used around stationary plant, where possible.

Directly affected residents will be contacted and advised of the likely impact and what we are doing to minimise disruption during the work.

Traffic changes

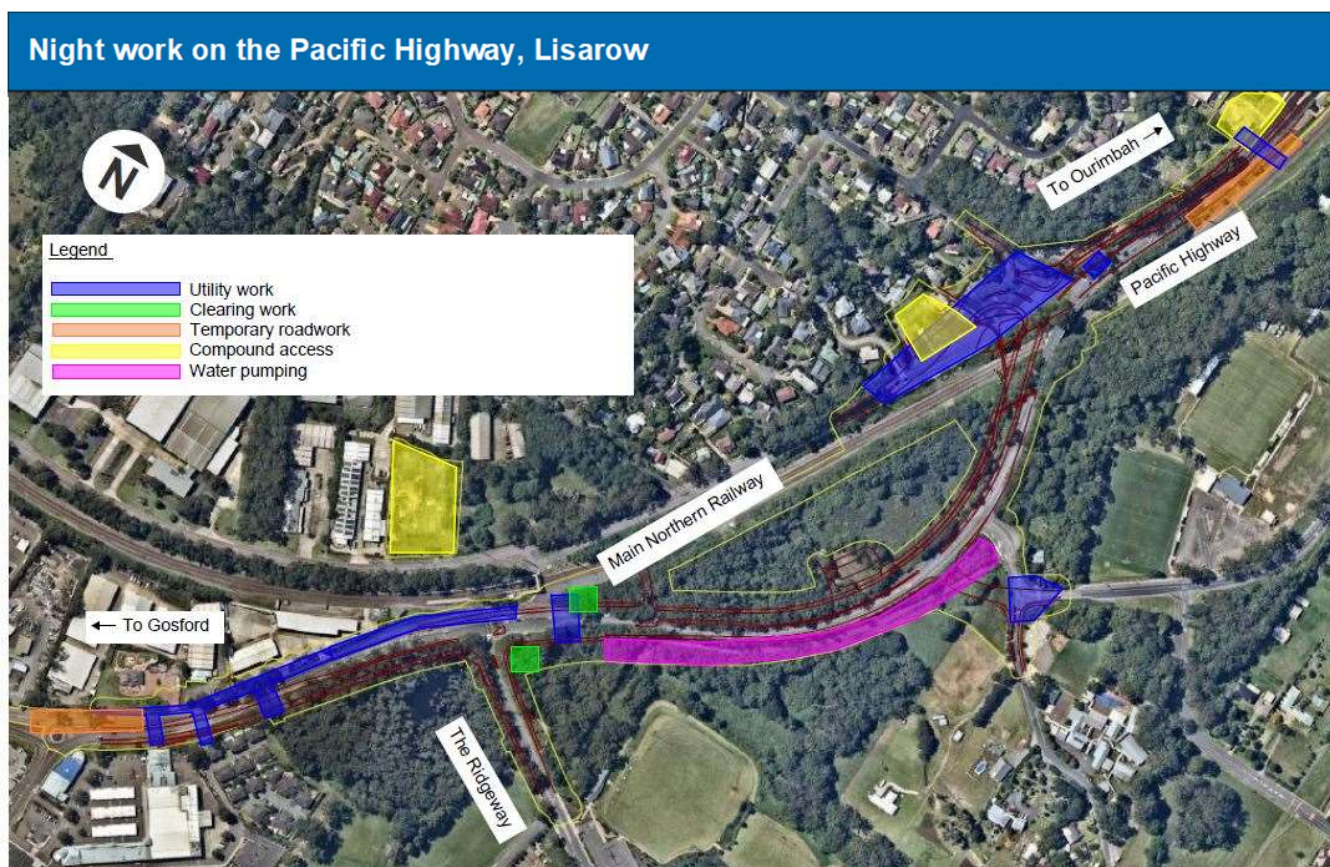
Lane closures and traffic control will be in place during the work and may affect travel times. There may be short term intermittent stops on the Pacific Highway during this work. A temporary 40 km/h reduced speed limit will be in place through the work zone for the safety of motorists and workers.

Please keep to speed limits and follow the direction of traffic controllers and signs. For the latest traffic updates, you can call 132 701, visit livetraffic.com or download the Live Traffic NSW App.

Contact

If you have any questions, or complaints please contact the project information line on 1800 560 667. For more information on our projects, visit rms.nsw.gov.au.

We thank you for your patience while this work is carried out.



If you need help understanding this information, please contact the Translating and Interpreting Service on 131 450 and ask them to call us on 1800 560 667