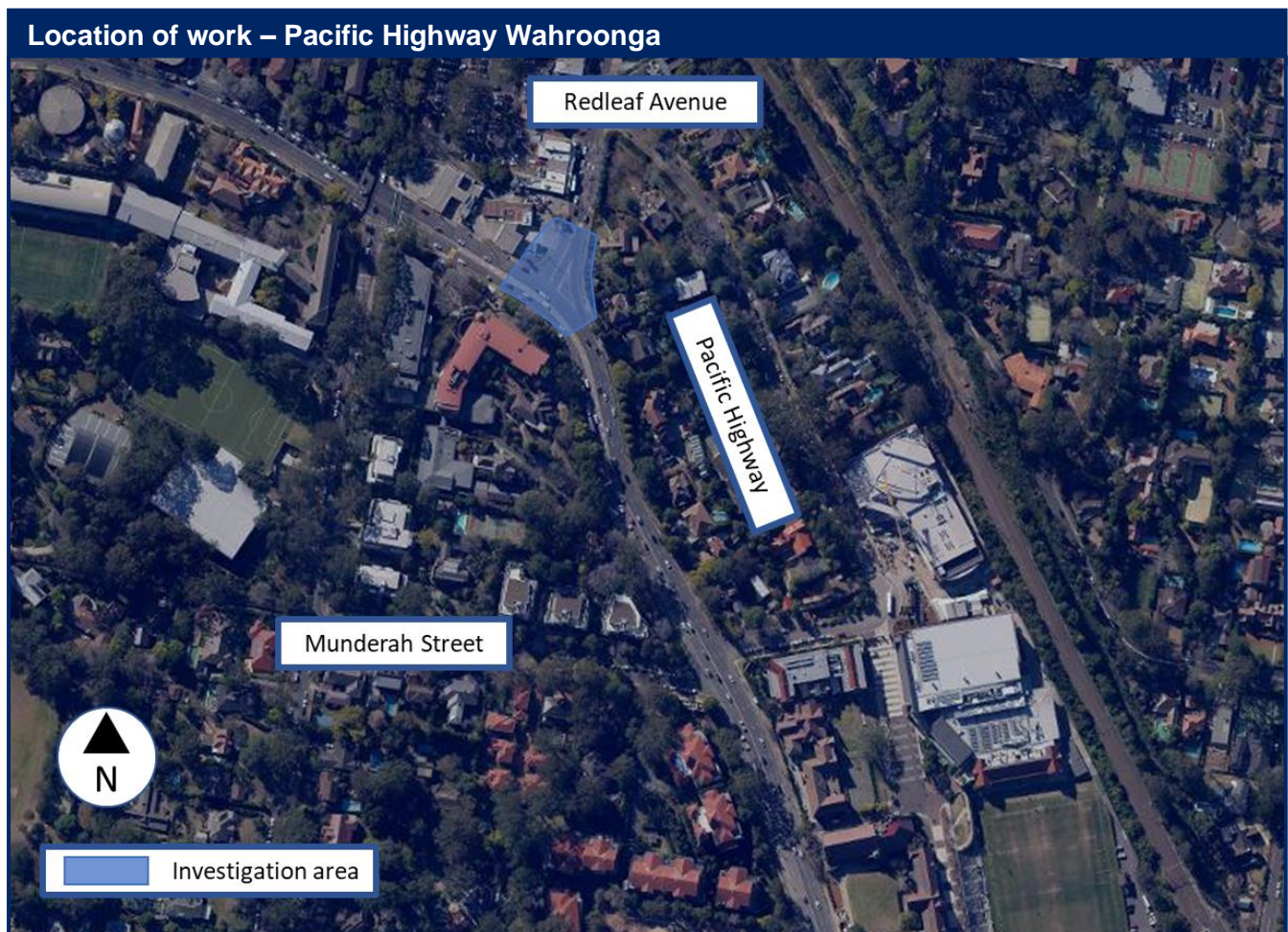


Project Notification – investigation work on Pacific Highway at Wahroonga

The NSW Government is working to ease congestion, increase safety and improve travel times on the Pacific Highway between Turramurra and Wahroonga as part of its \$300 million Urban Roads Pinch Points Program.



Each day 60,000 motorists use the Pacific Highway between Turramurra and Wahroonga. Currently motorists experience heavy congestion, slow travel times and delays, particularly during afternoon peak.

To help ease this congestion, Roads and Maritime Services are upgrading three intersections along the Pacific Highway at Finlay Road, Fox Valley Road and Redleaf Avenue and Coonanbarra Road.

As part of these upgrades, we need to carry out investigations to determine the precise location of underground utilities, such as gas, water, electricity and telecommunications utilities. This work will include saw-cutting, jack-hammering or breaking of concrete.

Our work schedule

We will be on site for two night shifts between **Wednesday 25 September** and **Tuesday 1 October**.

Our night work hours will be between **8pm to 5am** Sunday to Thursday.

Contact

If you have any questions, please contact us on 1800 572 004 or pinchpoint@rms.nsw.gov.au

For more information on our projects, visit rms.nsw.gov.au.

Thank you for your patience during this important work.

How will the work affect you?

We will do everything we can to minimise the impact of the work.

This will include working at different locations along the road; and completing the noisier activities, like saw-cutting concrete, jack-hammering and breaking up concrete, by midnight

Traffic changes

There will be some temporary traffic changes resulting from partial lane closures during our work hours to ensure the work zone is safe. These lane closures, if required, may affect travel times. Please keep to speed limits and follow signs and traffic controllers' directions. There may also be partial footpath closures.

For the latest traffic updates, you can call 132 701, visit livetraffic.com or download the Live Traffic NSW App.



Translating and Interpreting Service

If you need an interpreter, please call the Translating and Interpreting Service (TIS National) on **131 450** and ask them to telephone Roads and Maritime Services on 1800 572 004

Arabic

إذا كنتم بحاجة إلى مترجم، الرجاء الاتصال بخدمة الترجمة الخطية والشفهية (TIS National) على الرقم **131 450**، والطلب منهم الاتصال بوكالتكم Roads and Maritime Services على الرقم 1800 572 004

Cantonese

若你需要口譯員，請致電 **131 450** 聯絡翻譯和口譯服務署 (TIS National)，要求他們致電 1800 572 004 聯絡 Roads and Maritime Services。

Mandarin

如果你需要口译员，请致电 **131 450** 联系翻译和口译服务署 (TIS National)，要求他们致电 1800 572 004 联系 Roads and Maritime Services。

Greek

Αν χρειάζεστε διερμηνέα, παρακαλείστε να τηλεφωνήσετε στην Υπηρεσία Μετάφρασης και Διερμηνείας (Εθνική Υπηρεσία ΤΙΣ) στο **131 450** και ζητήστε να τηλεφωνήσουν Roads and Maritime Services στο 1800 572 004

Italian

Se desiderate l'assistenza di un interprete, prego telefonare al Servizio Interpreti e Traduttori (TIS National) al **131 450** chiedendo di contattare Roads and Maritime Services al 1800 572 004

Korean

통역사가 필요하시면 번역통역서비스 (TIS National) 에 **131 450** 으로 연락하여 이들에게 1800 572 004 번으로 Roads and Maritime Services 에 전화하도록 요청하십시오.

Vietnamese

Nếu cần thông ngôn viên, xin quý vị gọi cho Dịch Vụ Thông Phiên Dịch (TIS Toàn Quốc) qua số **131 450** và nhờ họ gọi cho Roads and Maritime Services qua số 1800 572 004