



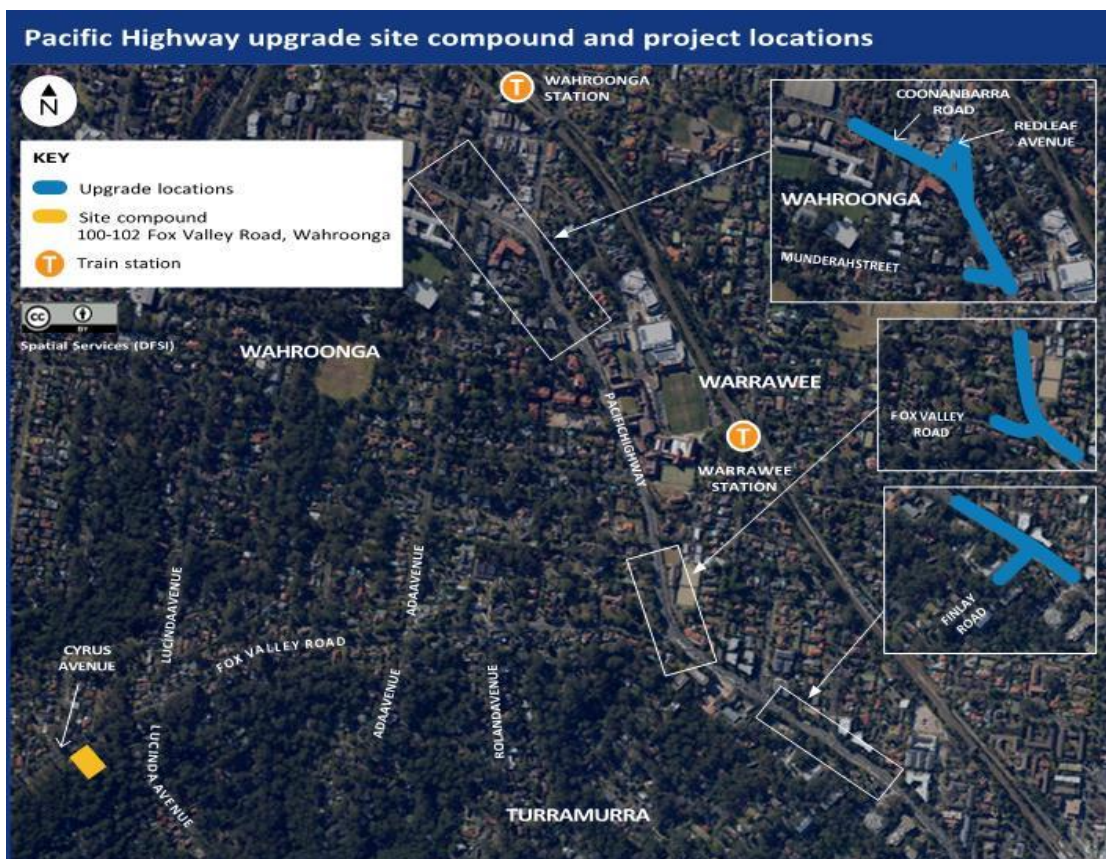
Site compound establishment continues at 100-102 Fox Valley Road, Wahroonga from Monday 19 October

The Australian and NSW Governments are taking action to improve Sydney’s road network, easing congestion and improving traffic flow, travel times and road safety.

In October 2020, the Australian and NSW Governments will start upgrading three intersections on the Pacific Highway between Turramurra and Wahroonga to ease congestion, reduce travel times and improve safety. This project will be completed in late 2022.

For this work we are establishing a site compound at 100-102 Fox Valley Road, Wahroonga to store materials and equipment and provide an office, amenity sheds and parking for site vehicles.

During our investigations, we discovered asbestos within the structure at 100 Fox Valley Road. To ensure there is no risk to the public, when we demolish the structure we will remove the asbestos from the site and send it to a licensed asbestos facility. We will be implementing an asbestos management plan that details safe work practices and will ensure it is managed to strict Environment Protection Authority requirements.



Our work schedule

We will be on site for **15 day shifts** between **Monday 19 October and Friday 6 November** weather permitting.

Our day work hours will be between **7am and 6pm**, from **Monday to Friday**.

Contact us

If you have any questions, please contact our delivery partner, Ward Civil on **1800 897 841** or projects@wardcivil.com.au

For more information about our project, visit nswroads.work/t2w

Thank you for your patience while we carry out this important work

What we're doing

Work on the site compound establishment started on Monday 28 September 2020 and will continue up to Friday 6 November 2020.

To establish the site compound we need to:

- remove the asbestos containing materials from the existing structure at 100 Fox Valley Road
- demolish the existing structure at 100 Fox Valley Road
- clear vegetation
- install temporary offices and sheds
- install temporary paved areas for parking of site vehicles
- install laydown area for parking of equipment and storage of materials

How the work will affect you

While we establish the site compound, our work will be noisy and dusty. We will do everything we can to minimise our impact.

While we are removing the asbestos we will be following strict safety precautions. To ensure the safety of workers and the community, we will be isolating the work area with safety fences. Workers entering the site will be required to wear protective equipment.

If further asbestos is discovered and removal is required, we will let you know.

How the site compound will affect you

We will do everything we can to minimise impact to neighbours when we use the site compound, particularly in relation to noise and light spill.

When we are undertaking night works, we will need to use the site compound at night. We will do what we can such as installing hoarding around the site to reduce the impact of lights, direct lights away from neighbouring properties where possible, ensure vehicles and equipment are turned off when they aren't in use and require workers when they use the site to be considerate of neighbours.

We will keep you informed of the progress of our work.



If you need help understanding this information, please contact the Translating and Interpreting Service on 131 450 and ask them to call us on 1800 897 841.