



Work continuing on the Pacific Highway between Turramurra and Wahroonga

March 2021

Since our last community update in January, we've completed our work at the Pacific Highway and Finlay Road.

We've created three northbound lanes between Lamond Drive and Marshall Avenue. There are now three continuous northbound lanes on the Pacific Highway from Ray Street to Marshall Avenue.

We've also banned the right turns from the Pacific Highway southbound onto Finlay Road and from Finlay Road onto the Pacific Highway southbound. These bans will improve safety at this intersection.

Our work also included:

- installing a new road median along the Pacific Highway between Lamond Drive and Blytheswood Avenue
- replacing the guard rails in front of Warrawee Public School
- landscaping near the Warrawee Public School
- asphaltting and line marking.

Thank you for your patience and understanding while we carried out this important work.

This upgrade is already helping ease congestion and improve travel times for the 60,000 road users who travel on this section of the Pacific Highway every day.

Fast facts

- Widening the Pacific Highway between Turramurra and Wahroonga to create three continuous northbound lanes.
- Our project will:
 - ease congestion
 - reduce travel times
 - improve safety.
- Work started in October 2020.
- Work is expected to be completed in late 2022.



Pacific Highway at Finlay Road: unsafe right turns before the upgrade



Pacific Highway at Finlay Road: three northbound lanes and completed road median

While we have finished working at the Pacific Highway and Finlay Road, we will continue our working upgrading the Pacific Highway at Fox Valley Road and Redleaf Avenue.

What's happened

At Fox Valley Road and Redleaf Avenue we have:

- completed pavement surveys and underground utility investigations
- started utility adjustments
- completed tree trimming and vegetation removal.



The Pacific Highway and Fox Valley Road: work continues.



The Pacific Highway and Redleaf Avenue: work continues.

What's next?

During April and June 2021, our work on the Pacific Highway at Redleaf Avenue and Fox Valley Road will continue and will include:

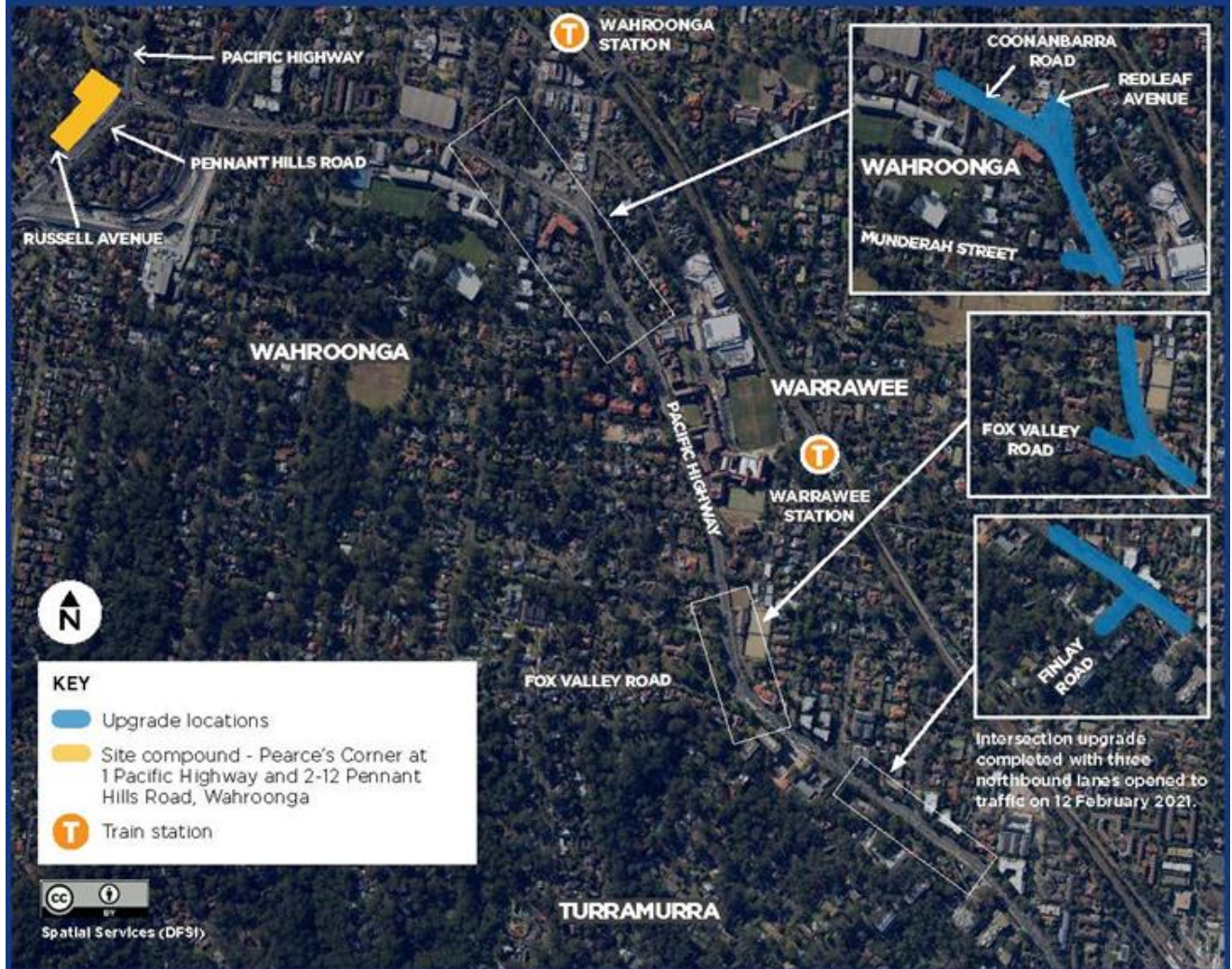
- relocating utilities such as water, gas, electrical and telecommunication services in preparation of widening the Pacific Highway
- installing stormwater pipes
- constructing footings for traffic lights and installing new poles
- relocating underground cables for traffic lights
- moving the project site compound from Fox Valley Road to Pearce's Corner, Wahroonga.

Site compound moving to Pearce's Corner, Wahroonga

We will move our site compound from 100-102 Fox Valley Road to Pearce's Corner at 1 Pacific Highway and 2-12 Pennant Hills Road. We will start establishing the site compound from Monday 12 April and will progressively relocate our activities after the site compound is set up. We expect to vacate the site compound on Fox Valley Road by the end of June 2021

Transport for NSW owns 100-102 Fox Valley Road and are exploring options to sell the site in the near future.

Project locations and Pearce's Corner, Wahroonga site compound



Nearby Transport for NSW projects

Near the Pacific Highway and Redleaf Avenue intersection upgrade, Transport for NSW is upgrading Warrawee Station to make the station precinct accessible to those with a disability, limited mobility, parents/ carers with prams and customers with luggage. The upgrade includes a new lift to provide access between the Redleaf Avenue Bridge and the station platform, a family accessible toilet, accessible parking space and spaces for kiss and ride and taxis.

Construction is progressing well with major work well underway. The upgrade is expected to be completed in 2022.

If you would like more information on this project call 1800 684 490, email projects@transport.nsw.gov.au or visit www.transport.nsw.gov.au/wahroonga

Our work schedule

We will work **60 day shifts and 61 night shifts** between Thursday **1 April** and Wednesday **30 June**, weather permitting.

Our day work hours will be between **7am and 6pm Monday to Friday** and **Saturday** between **8am and 1pm**. Our night work hours will be between **8pm to 5am**, from **Sunday to Thursday**.

We will not work during the day on Sundays, public holidays or during bad weather.

Contact us

If you have any questions, please contact our delivery partner, Ward Civil on **1800 897 841** or projects@wardcivil.com.au

For more information on this project, visit nswroads.work/t2w

Thank you for your patience during this important work.

How this will affect you

There will be noise and disruptions associated with our work. We will work with the community to minimise the impact, including implementing mitigation measures to reduce the impact of noisier tasks (such as jackhammering and concrete saw cutting) and completing these tasks by **midnight**.

We will inform the community as work progresses and of any changes to our work schedule. Traffic changes

Traffic changes

Temporary lane closures will be in place while we work to ensure the safety of road users and our workers. There may also be partial closure of footpaths in the work areas with clearly marked pedestrian detours provided.

Please keep to speed limits and follow signs and traffic controller directions. For the latest traffic updates, call 132 701, visit livetraffic.com or download the Live Traffic NSW app.



Translating and Interpreting Service

If you need an interpreter, please call the Translating and Interpreting Service (TIS National) on **131 450** and ask them to telephone Ward Civil on 1800 897 841.

Cantonese

若你需要口譯員，請致電**131 450**，聯絡翻譯口譯服務署 (TIS National)，要求他們致電1800 897 841，聯絡Ward Civil。

Mandarin

如果你需要口译员，请致电**131 450**，联系翻译口译服务署 (TIS National) 要求他们致电1800 897 841，联系Ward Civil。

Korean

통역사가 필요하시면 통번역서비스 (TIS National)에 **131 450** 으로 전화하여 Ward Civil에 1800 897 841번으로 전화하도록 요청하십시오.

Persian

اگر به مترجم شفاهی نیاز دارید، لطفاً با خدمات ترجمه کتبی و شفاهی (تیس نشنال) با شماره **131 450** تماس بگیرید و از آنها بخواهید که به Ward Civil به شماره 1800 897 841 زنگ بزنند.

Japanese

通訳が必要な場合は、翻訳通訳サービス (TIS National) をご利用ください。**131 450** に電話をかけ、ウオード・シヴィル (電話：1800 897 841) に電話するよう頼んでください。

Hindi

यदि आपको दुभाषिण की आवश्यकता है तो अनुवाद एवं दुभाषिया सेवा (TIS National) को **131 450** पर फोन करें और उन्हें Ward Civil को 1800 897 841 पर फोन करने को कहें।

Spanish

Si necesita un intérprete, llame al Servicio de Traducción e Interpretación (TIS National) al **131 450** y pida que llamen a Ward Civil al 1800 897 841.