

Work continuing on the Pacific Highway between Turramurra and Wahroonga

October 2021

Since our last update in July, we have continued work upgrading the intersections of the Pacific Highway at Fox Valley Road and Redleaf Avenue in Wahroonga.

What's happened:

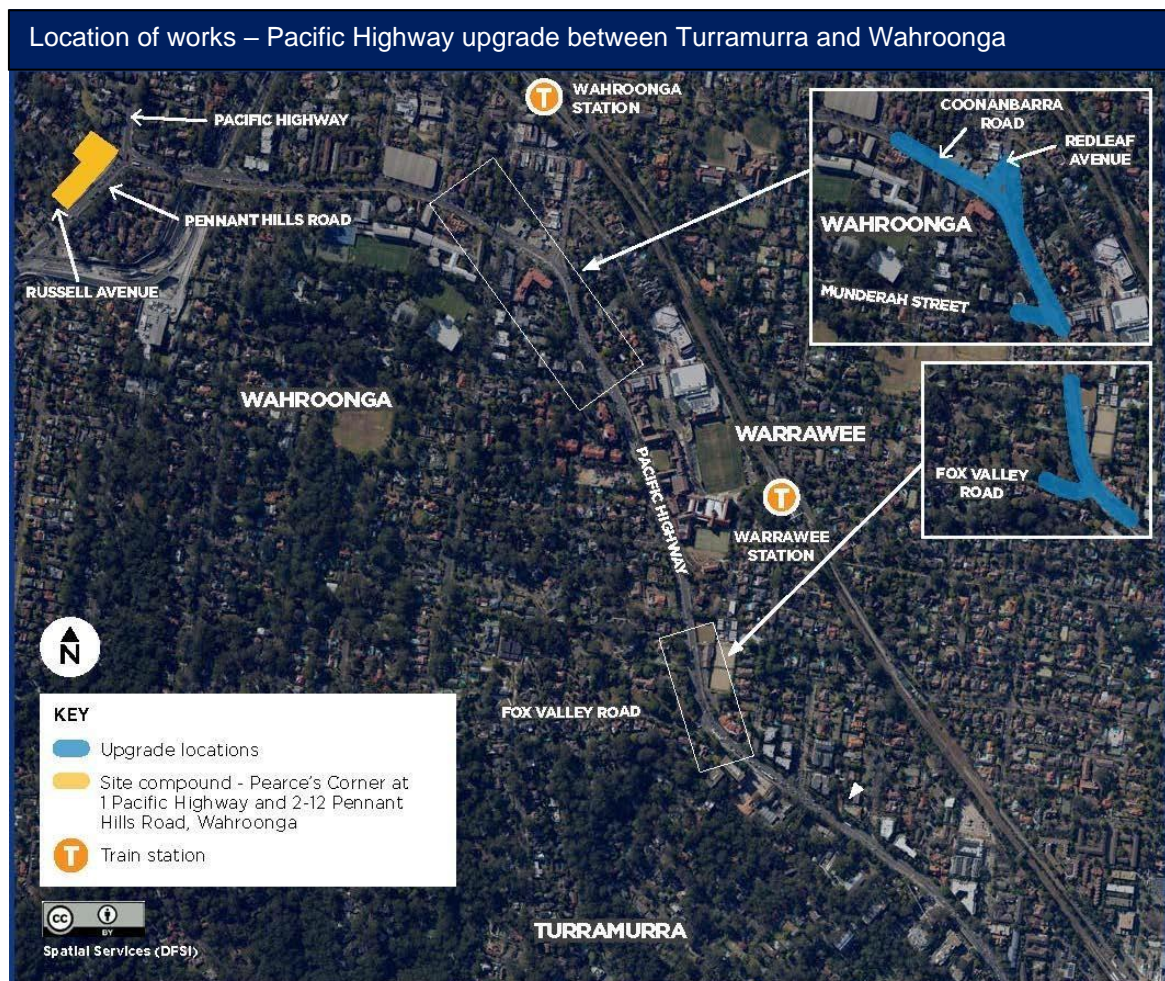
Between July and September, we have:

- continued private property adjustments works,
- continued utilities relocation and traffic signal works,
- and road pavement work.

What's next:

During October 2021 and January 2022, our work will include:

- private property adjustment works
- footpath construction
- ongoing utilities work to relocate existing pipes and cables
- road pavement works such as concreting and asphaltting.



Our work schedule

We will work up to **71 day shifts** and **70 night shifts** between **Friday 1 October** and **Monday 17 January 2022**, weather permitting.

Our day work hours will be between **7am** and **6pm Monday to Friday** and **Saturday** between **8am** and **1pm**.

Our night work hours will be between **6pm to 7am**, from **Sunday to Thursday**.

We will not work during the day on Sundays, public holidays or during heavy rainfall.

Contact us

If you have any questions, please contact our delivery partner, Ward Civil on **1800 897 841** or projects@wardcivil.com.au.

For more information on this project, visit nswroads.work/t2w.

Thank you for your patience during this important work.

How will the work affect you?

There will be noise and disruptions associated with our work.

We will work with the community to minimise impacts, including applying noise mitigation measures to reduce work impacts (such as jackhammering and concrete saw cutting), and completing these noisy tasks before **midnight**.

We will update you as work progresses and notify you prior to any changes to our work schedule.

Currently infrastructure construction projects are considered essential to the economy and works are continuing on this site as planned under strict Covid safe protocols. The safety and wellbeing of our workforce and the wider community is our highest priority.

Are you studying for the Higher School Certificate?

If a member of your household is studying for the Higher School Certificate (HSC), please contact us as soon as possible. We will make every effort to limit disruption to HSC students during the exam period.

Traffic changes

There will be temporary lane closures in place, while we work to ensure the work area is safe for both road users and our workers. There may also be partial closure of footpaths in other work areas and clearly marked pedestrian detours will be provided.

Please keep to speed limits and follow signs and traffic controller directions. For the latest traffic updates, call 132 701, visit livetraffic.com or download the Live Traffic NSW app.

Wahroonga Station Upgrade

Transport for NSW is upgrading Wahroonga Station to make the station accessible to people with a disability, limited mobility, parents/ carers with prams and customers with luggage. Construction is ongoing and is expected to be completed in 2022. If you would like more information on this project, you can call 1800 684 490 or send an email to projects@transport.nsw.gov.au



If you need help understanding this information, please contact the Translating and Interpreting Service on 131 450 and ask them to call us on 1800 897 841.