

Intersection upgrade on Parramatta and Shaftesbury roads, Concord

Start of work notification

Transport for NSW | April 2020

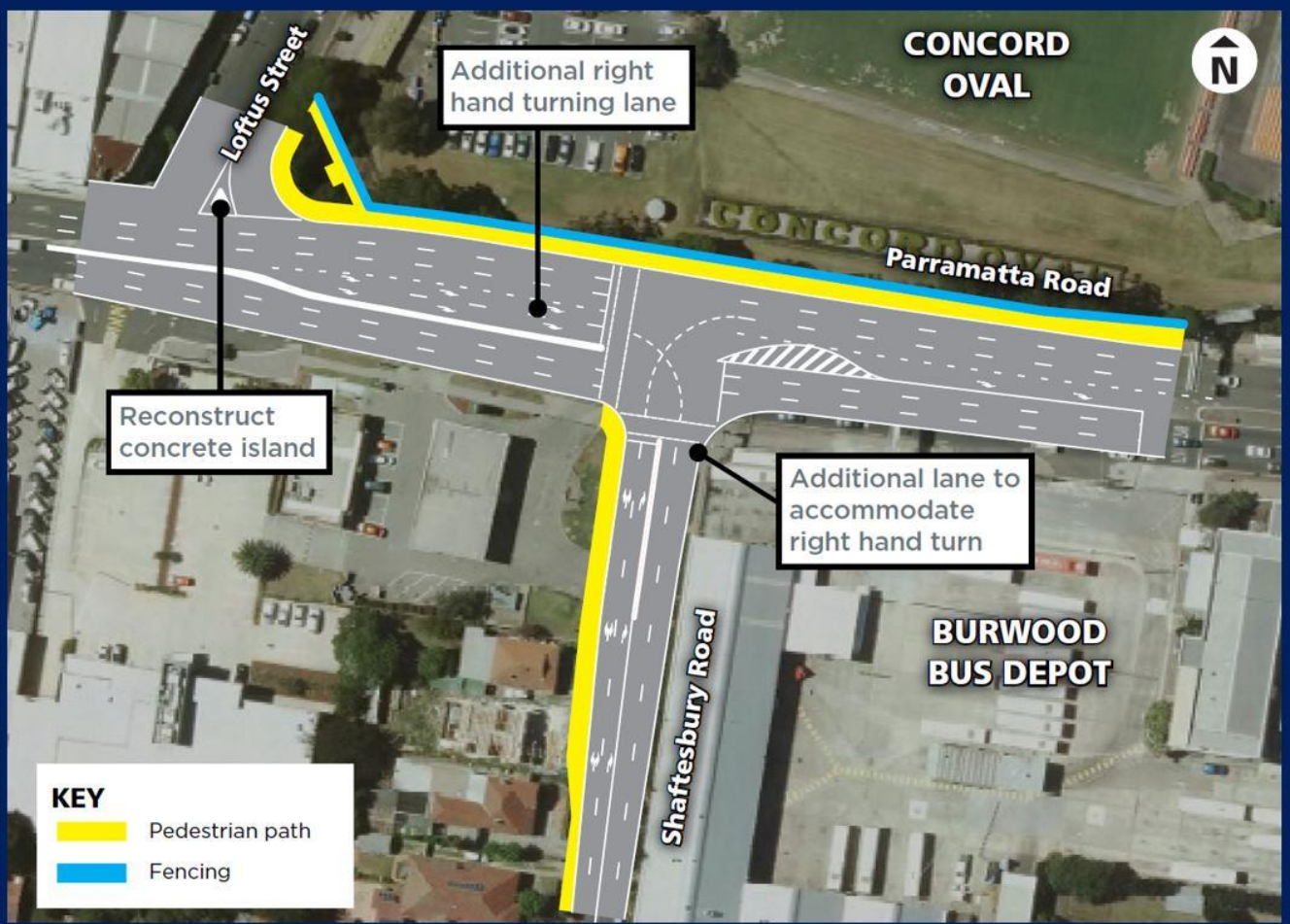
In April 2020, Transport for NSW will start work on improvements to the intersection of Parramatta and Shaftesbury roads, Concord.

About the project

The upgrade involves widening the roadway alongside Concord Oval to allow construction of a new right-turn-only lane on Parramatta Road. A new departure lane will also be constructed on Shaftesbury Road. This will increase the number of vehicles able to clear the intersection with each traffic light phase. These changes will help reduce congestion eastbound on Parramatta Road, particularly in the busy AM peak period.

The project is expected to be completed in early-2021.

Intersection improvements, Parramatta and Shaftesbury roads, Concord



Work schedule

We will work up to five nights a week. Our night work hours are **8pm-5am Sunday to Thursday**. We will also work up to six days a week. Our day work hours are **7am-6pm, Monday to Friday** and **8am-1pm Saturdays**. We won't work on public holidays.

Work to date

Transport for NSW undertook some utility and environmental investigation work in early-2019. Work on the project was delayed by a state-wide suspension of construction work involving live electrical lines.

Next steps

The construction area will be established and concrete barriers, fencing and signage erected. Earthworks will be established, minor traffic adjustments will be made and utilities relocation will begin.

How the work will affect you

Our work may be noisy at times but we will do everything we can to minimise its impact, including completing the noisier activities (such as concrete cutting, chainsawing or jackhammering) by midnight.

Our work might involve changes to traffic conditions. Please keep to speed limits and follow signs and traffic controllers' directions. For the latest traffic updates, you can call 132 701, visit livetraffic.com or download the Live Traffic NSW App.

Community consultation

To ensure we protect public health and safety during the Coronavirus outbreak, we need to change the way we consult with the community. Please be assured we'll continue to respond any questions or concerns you may have about our work. Please use the contact details in this notification.

Transport for NSW previously sought public feedback on the project in 2016. A further project update was published in January 2019. These are available to view or download on the project webpage:

nswroads.work/ParramattaShaftesbury

Tree removal and offsets

Our work requires removal of some trees along Parramatta Road, adjacent Concord Oval, and the western side of Shaftesbury Road.

These are being removed to ensure the safety of workers and road users and because they are within the work area.

To offset the removal of these trees, Transport for NSW will make a contribution to City of Canada Bay, which is undertaking the redevelopment of Concord Oval.

Site compound

A site compound to support the project is being established on Frederick Street, Ashfield. More information about the site compound is available on the project webpage – nswroads.work/ParramattaShaftesbury.

Contact us

If you have any questions or would like more information on the project, contact our delivery partner, Ventia Boral Amey Joint Venture:



1800 677 700



nswenquiries@vbajv.com.au



nswroads.work/ParramattaShaftesbury



PO Box 838, Rockdale NSW, 2216



If you need help understanding this information, please contact the Translating and Interpreting Service on 131 450 and ask them to call us on 1800 677 700.