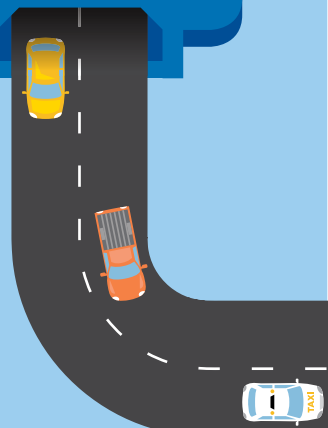




# Parramatta Road, Wattle and Frederick Street intersection upgrade

## Start of work notification



Transport for NSW plans to upgrade the intersection at Wattle Street, Frederick Street and Parramatta Road in Ashfield to improve traffic flow, including safer right turn movements from Wattle Street onto Parramatta Road. Construction is scheduled to start in September 2020 and completion is expected by February 2021.

### What does our work involve?

The upgrade involves minor changes to intersection line markings, shortening the existing concrete median strips on Parramatta Road and Frederick Street, installing stormwater drainage and relocation of utilities. The upgrade work will be contained within the existing road footprint. There will be no changes to nearby properties as part of this work.

A map of the intersection upgrade is shown below.



## Investigation night work

Investigation work for this upgrade will occur from **Monday 31 August 2020 until Monday 7 September 2020**. It will be completed over **five** night shifts during this period, weather permitting.

Our night work hours will be between **8pm and 5am, Sundays to Thursdays**.

The location of the work is shown on the map below. The work will include surveying, drilling potholes and collecting soil samples to assess the existing ground conditions.

Our work may be noisy at times but we will do everything we can to minimise its impact, including completing the noisier activities, such as concrete cutting and jackhammering, before midnight.

Lane closures will be in place during the investigation work, so that the work can be carried out safely. For the safety of our workers, please keep to the speed limits and follow signs and traffic controllers' directions.

For the latest traffic updates, you can call 132 701, visit [livetraffic.com](http://livetraffic.com) or download the Live Traffic NSW App.

Location of investigation work from 31 August 2020 on Parramatta Road, Wattle Street and Frederick Street, Ashfield



## Contact us

To ensure we protect public health and safety during the Coronavirus outbreak, we need to change the way we consult with the community.

Please be assured we'll continue to respond to any questions or concerns you may have about our work.

If you have any questions or would like more information on the project please contact our delivery partner, Ventia Boral Amey:

☎ 1800 677 700

@ [nswenquiries@vbajv.com.au](mailto:nswenquiries@vbajv.com.au)



If you need help understanding this information, please contact the Translating and Interpreting Service on 131 450 and ask them to call us on 1800 677 700.

**Privacy.** Transport for NSW ("we") are collecting your personal information in connection with consultation relating to the project. In addition to collecting your name and contact details we may collect other information during your communications with us. We will retain and use this information for consultation purposes, including communications and analysis in connection with this project. We will not disclose your personal information to third parties unless you consent or as authorised by law. If we include your comments in any public report your information will be de-personalised and we will not identify you. Providing your personal information is voluntary however if you do not provide it you may not be included in our stakeholder database and we may not be able to communicate with you directly about the project if you do not provide your personal information.

Your personal information will be managed by Transport for NSW in accordance with the Privacy and Personal Information Act 1998 and the Health Records and Information Privacy Act 2002. If you wish to access, correct or remove the personal information collected by us please write to us by email at [info.westconnex@transport.nsw.gov.au](mailto:info.westconnex@transport.nsw.gov.au) or by post at Transport for NSW Locked Bag 928 North Sydney NSW 2059. For further information, please see Transport for NSW's Privacy Management Plan on our Privacy page or contact [privacy@transport.nsw.gov.au](mailto:privacy@transport.nsw.gov.au).