



We're building a safer Princes Highway

Transport for NSW is developing a strategic roadmap to identify other priorities for upgrades along the Princes Highway between Jervis Bay Road and the Victorian border. More detail on these priorities will be announced later this year.

The Princes Highway upgrade will transform communities, create better connected and more mobile regional centres, deliver a more resilient transport network, improve safety, ease traffic congestion and grow regional economies.

Visit www.princeshighway.nsw.gov.au to view an interactive map and find out more about planned upgrades near you.

More information will be shared as the project progresses.

We remain committed to delivering works that improve safety and address local crash history, including the new Princes Highway and Island Point Road roundabout, while the Princes Highway upgrade is in development.

For more information on the Princes Highway upgrade visit www.princeshighway.nsw.gov.au

Contact us:

If you have any questions or would like more on the Island Point Road project please contact our project team:

☎ 1800 975 333 (Toll Free)

@ southernprojects@rms.nsw.gov.au

🌐 rms.work/islandpointroad



This document contains important information about Transport projects in your area. If you require the services of an interpreter, please contact the Translating and Interpreting Service on 131 450 and ask them to call Transport Projects on 1800 331 713. The interpreter will then assist you with translation.



Transport
for NSW



Project Update

Princes Highway and Island Point Road intersection improvements at Tomerong



Construction of the Island Point Road roundabout is underway. The new roundabout at the intersection of the Princes Highway and Island Point Road in Tomerong will improve safety, traffic efficiency and connectivity around the Bay and Basin area.

We are more than halfway through major work and you can expect new traffic changes from August 2020 as we progress to a new stage of work.

We thank you for your patience during work. This update lets you know what to expect over the coming months to minimise disruptions and help you plan ahead.



What we've been doing

Work on the project started in March 2020 and has included:

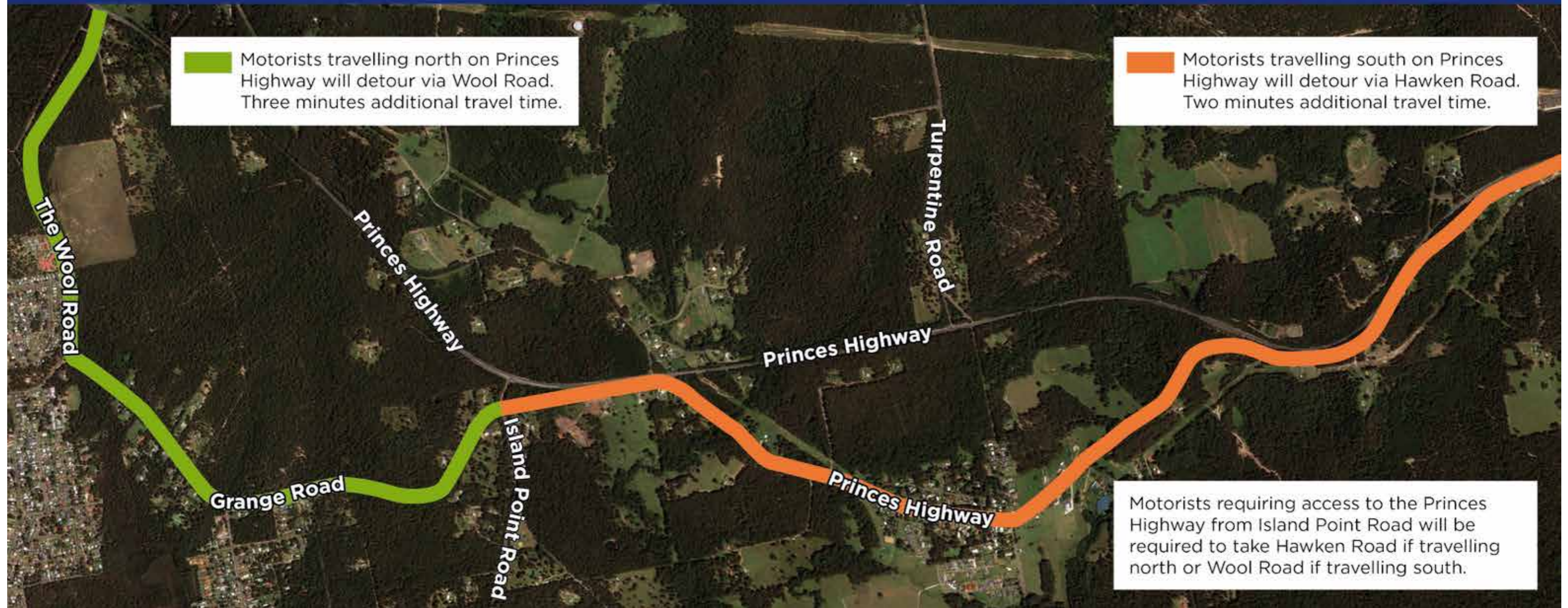
- Removal of vegetation. Vegetation has been mulched and will be used for future projects.
- Earthwork to allow additional lanes on the highway and for the roundabout to be installed. This has involved digging into the southern side of the intersection.
- Pavement construction on the Princes Highway to enable the width of the new roundabout.
- Removing street lighting and other utilities that will be replaced during construction.



STAGE 1	Early work and setting up site office. March 2020.
STAGE 2	Earth work and building the adjoining road. March 2020.
STAGE 3	Building the base of the roundabout. August 2020*. This requires full closure of the intersection for about two weeks. Detour options are on the next page.
STAGE 4&5	Building the roundabout. September*. This requires partial closure of the intersection and occasional night work and we will keep you informed of these impacts.
STAGE 6	Finishing work and removing site office. Later this year. This requires occasional reduced speed limits and night work and full use of the new roundabout.

* Dates are weather permitting

Planned detour routes for Island Point Road and Princes Highway Intersection



Upcoming work

We will soon be moving to the next stages of major work on the roundabout. We have included a timeline to let you know what we will be doing over the next few months and how this will impact access to the Princes Highway and Island Point Road.

August 2020

From late August, work will begin on building the base of the roundabout. This will be done in two parts. To complete the first section a full closure of Island Point Road and Grange Road will be required for about two weeks.

September 2020, weather permitting

From September we will begin the next stage of major work on the roundabout. Once the base of the roundabout is complete, we will remove existing concrete barriers and start building the roundabout.

At this time, we will partially reopen Island Point Road. Restrictions will include the removal of the right-turn-in and right-turn-out of Island Point Road. Motorists travelling north on the Princes Highway and wanting to turn right into Island Point Road will be required to use the marked detours during this time.

We will be working day and night to reduce the time the community and road users are impacted by this work.

We will keep you informed of changes to your journey on Island Point Road and the Princes Highway as these works progress.

Detours

Detours will be in place when access to Island Point Road and Princes Highway is restricted.

Motorists travelling south along the Princes Highway onto Island Point Road will need to travel via Hawken Road (old Princes Highway). This will add an extra two minutes and 500 metres to journeys.

Motorists travelling north along the Princes Highway onto Island Point Road will need to travel via Wool Road. This will add an extra three minutes and about two kilometres to journeys.

Motorists requiring access to the Princes Highway from Island Point Road will need to take Hawken Road if travelling north or Wool Road if travelling south.

Signs and traffic control will be in place to assist you in using these detours. In times when traffic is heavy including peak hour and school holidays we will be using additional traffic control measures to help control congestion and make these routes safer for all road users.

