

Prospect Highway upgrade Construction Update



The Australian and NSW Governments are upgrading Prospect Highway between Reservoir Road, Prospect and St Martins Crescent, Blacktown to reduce congestion and help meet future traffic demands on this corridor.

What have we achieved so far?

Since our last update, we have:

- completed excavation, piling and concreting ready for installation of bridge components on the Great Western Highway and M4 Motorway
- completed temporary road realignment between Great Western Highway and Foundation Place to allow pavement construction to occur without impacting motorists.
- began installation of the majority of noise walls on the northbound side of Prospect Highway.

Prospect Highway Upgrade Progress

50%
complete

of **new utility installation** complete - including Telstra, power and water

100%
complete

foundation piling completed for the new bridges over GWH and M4 Motorway.

32
Olympic
pools

33,000 tones of material excavated = 32 Olympic Swimming pools

How will the work affect you?

Our work will be noisy at times, but we will do everything we can to lessen the disturbance including using non-tonal reversing alarms, switching off vehicles when not in use and staging the work in different locations. Any high noise works such as cutting road pavement will be undertaken before 11pm.

What's next on Prospect Highway?

From late September to November, a number of key construction milestones will take place. Our focus will be on work between the Foundation Place intersection and Bungarribee Road. Key works will include:

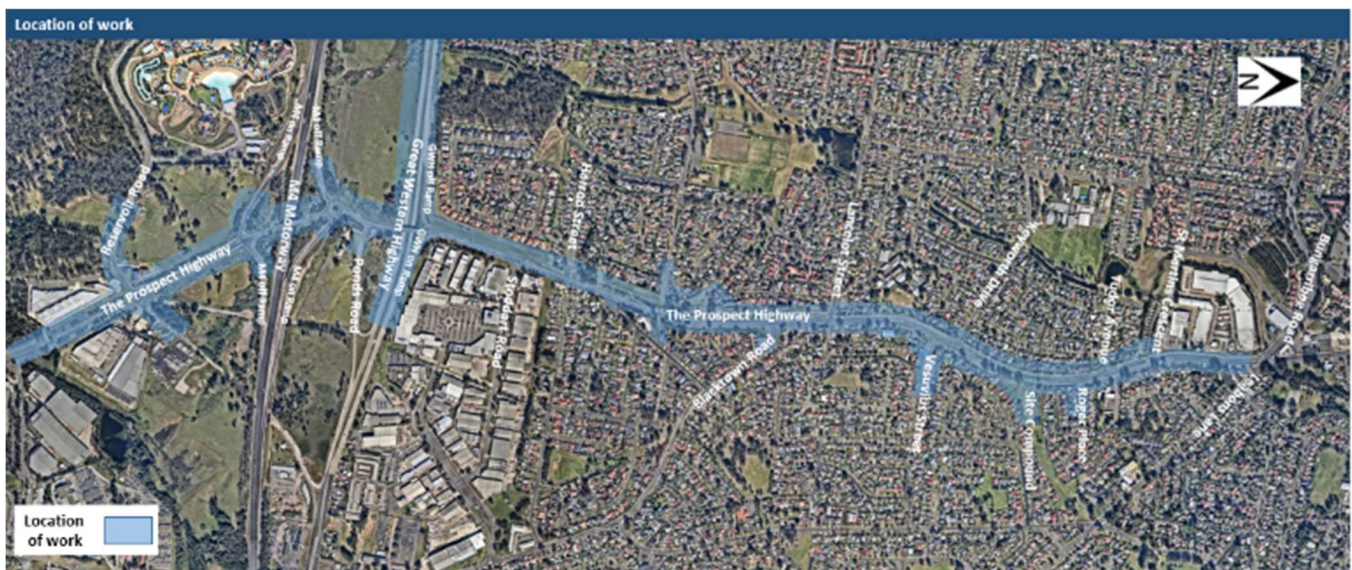
- installation of bridge structure over the Great Western Highway and M4
- construction of retaining walls and noise walls along the northbound and southbound boundaries
- installation of the new pedestrian underpass linking Sher Place and Old Church Lane
- new line marking and temporary pavement work on the Prospect Highway at St Martins Crescent, Blacktown Road and Lancelot Street
- construction of new permanent pavement particularly at Reservoir Road and Harrod Street
- earthworks including hammering, drilling and excavation,
- installation of safety barriers and signage
- relocation of utilities including trenching
- stormwater drainage installation
- property adjustment works
- equipment and material deliveries



Above: Excavations works between M4 Motorway and Reservoir Road ongoing.

Construction Update

Where will work take place?



Stormwater and Utilities Installation

From **Thursday 1 September** the team will be undertaking the relocation and installation of a number of underground utilities and stormwater drainage underneath and adjacent to Prospect Highway.

While we are trying to undertake as much of these works as possible behind barriers or using non-intrusive techniques such as underboring (a small tunnel under the road) during the day, some of these works need to occur at night when there is less traffic and it is safer for our workers and motorists.

These works may be noisy at times (we will limit high noise activities to occur before 11pm where possible) and there may be minor delays to local traffic.

Our night work hours are from **8pm to 5am Sunday to Friday**. However, our work crews may be on site from 6pm to prepare for the shift and set up safety equipment. Works have been scheduled to minimise disruptions to residents and will not occur in any single area for more than **two nights in a row or more than three days in any week**.

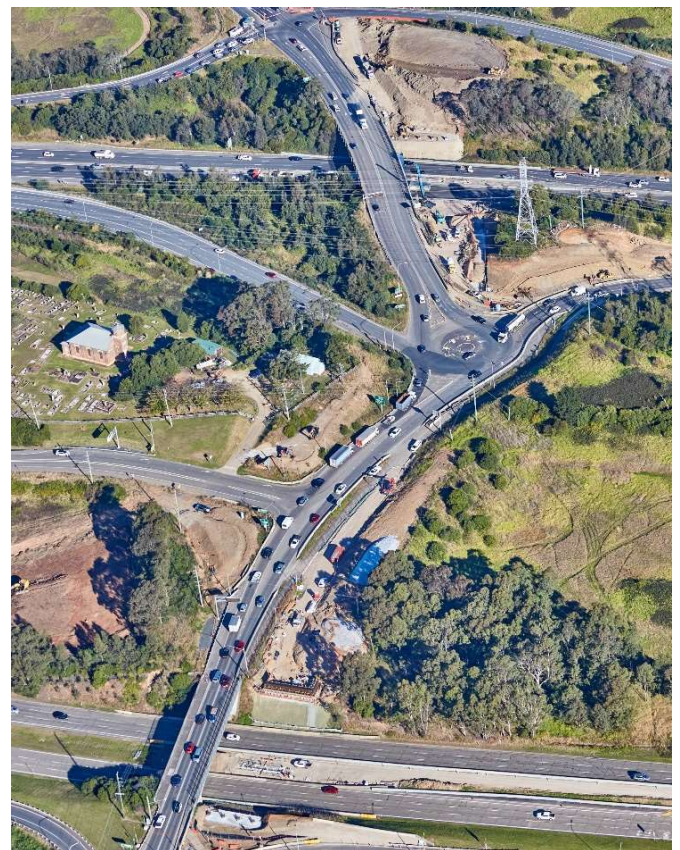
These works are being done to facilitate the widening of the road and to install the additional drainage required. In addition, some of these works will allow for the changed and additional traffic lights along Prospect Highway.

Intersection Pavement Works

From October we will start major pavement works at some of the intersections along Prospect Highway. These works involve excavating out sections of the existing roadway, bringing in a new foundation layer and then asphaltting the surface and line marking.

These works will occur 24 hours a day for between 3 and 5 days at a time as works need to be completed continuously in order to safely construct the new roadway.

The first two intersections we will be working on are the intersection of Prospect Highway and Reservoir Road and the intersection of Prospect Highway and Harrod Street.



Above: Aerial view of works progressing around the Great Western Highway

Construction Update

Reservoir Road Intersection


The works at Reservoir Road intersection will be commence in mid to late October and will be completed across approximately three Friday evening to Monday Morning shutdowns subject to weather and approvals. During these weekend shutdowns **works will occur 24 hours a day**.

During these shutdowns access to and from Reservoir Road will be restricted and there will be changed traffic conditions at this intersection. Local traffic will continue to be able to access Reservoir Road via the M4 Motorway.

Harrod Street Intersection

The works at Harrod Street intersection will be commence in late October and will be completed across approximately 3 weeks subject to weather and

approvals. During this time Harrod Street will be closed to traffic and there will be changed traffic conditions at this intersection. Local traffic will continue to be able to access the area via Lancelot Street.



We thank the community for your patience as we progress the Prospect Highway upgrade. The upgrade will improve travel time, safety and reduce congestion for all road users and is expected to be completed in late 2024.

Traffic changes

During construction, the speed limit on this section of the Great Western Highway has been reduced to 60km/hr. Speed has also been reduced to 80km/hr on the M4 Motorway. Within the work zone, further speed reductions will be in place at night.

There may also be changes to traffic conditions on Blacktown Road and Prospect Highway. Please keep to speed limits and follow signs and traffic controllers' directions. Our work may affect travel times so please allow additional travel time. For the latest traffic updates, call 132 701, visit www.livetraffic.com or download the Live Traffic NSW App.

Changed traffic conditions on Prospect Highway, at St Martins Crescent, Lancelot Street and Blacktown Road intersections

In order to complete new pavement on Prospect Highway and to reduce the amount of night works at the St Martins Crescent, Lancelot Street and Blacktown Road intersections along the Prospect Highway, realignment of these intersections will occur in September and October.

Temporary pavement, barrier installation and line marking works will be undertaken at night for these changes. Once complete, works will continue on both day and night shift to complete the new permanent pavement in this area.

During these changed conditions there may be additional congestion on Prospect Highway particularly during peak times, motorists should use alternate routes where available.

Temporary relocation or closure of bus stops

As works progress on Prospect Highway some bus stops will need to be temporarily closed or relocated in order to construct new pavement, kerb and the shared pathway.

Changes will be advertised at individual bus stops in advance of these changes to inform customers of the alternate bus stop location.

Construction Update

Detours on the Great Western Highway and M4 Motorway

Scheduled overnight full and partial lane closures and detours will occur at times on the eastbound and westbound lanes of the Great Western Highway and M4 Motorway from **Thursday 1 September to Friday 28 October** to ensure the work zone is safe as we undertake works to install components for the new bridges over these roads.

East and west bound lanes of the M4 and Great Western Highway will be fully closed near Prospect Highway for up to **12 nights** between **Thursday 1 September to Friday 28 October**.

A detour will be in place for some of these closures. Further details on these closures are available on the project website at: nswroads.work/prospecthighway

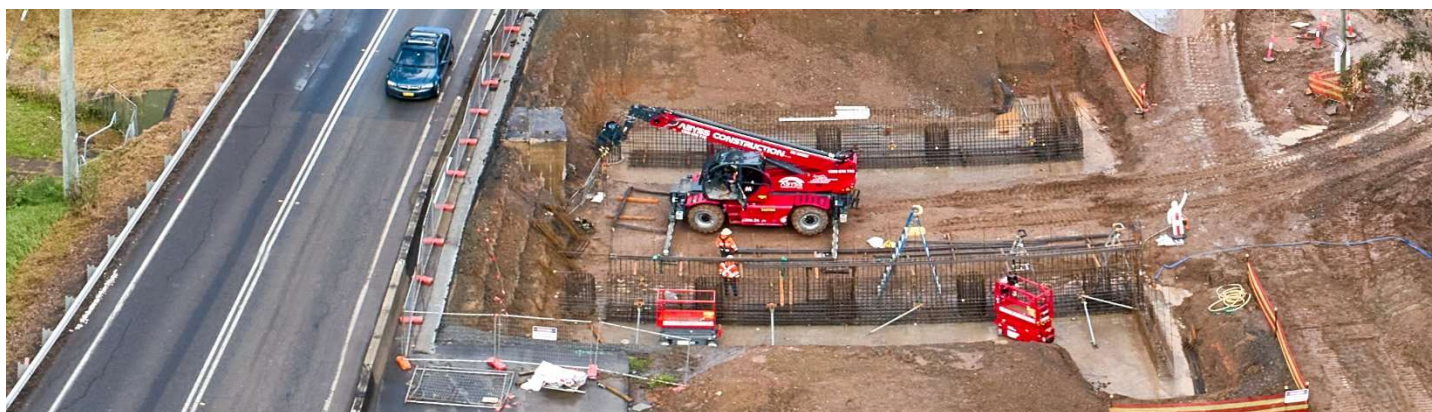
Electronic messaging signage will be activated in both directions, and traffic control and further reduced speed limits will be in place during work hours for the safety of workers and road users. Completion of all work is dependent on a few factors including weather and site conditions and is subject to change.

When are we working?

During this time, our work hours will be:

- Day – Monday to Saturday: 7am to 6pm.
- Night – Sunday to Thursday: 8pm to 5am.

Night work will be carried out on certain days at specific locations from **Thursday 1 September 2022 to Wednesday 30 November 2022**, excluding public holidays and weather permitting. This work will be carried out at night to lessen the disruption to traffic and improve safety for workers and road users.



Above: Aerial view of works progressing around the new pedestrian underpass

Contact us

If you have any questions, please contact the Community Team on **1300 660 275** or email at prospecthighway@fultonhogan.com.au



If you need help understanding this information, please contact the Translating and Interpreting Service on **131 450** and ask them to call us on **1300 660 275**.