

Prospect Highway upgrade Construction Update



The Australian and NSW Governments are upgrading Prospect Highway between Reservoir Road, Prospect and St Martins Crescent, Blacktown to reduce congestion and help meet future traffic demands on this corridor.

Transport for NSW has appointed Fulton Hogan to deliver the \$280 million Prospect Highway upgrade between Reservoir Road, Prospect and St Martins Crescent, Blacktown. The upgrade will improve travel time, safety and reduce congestion for all road users and is expected to be completed in 2024.

Works progressing around the M4 Motorway and Great Western Highway

Since our last update in May, we have completed:

- new line marking and temporary pavement work on the Prospect Highway between Reservoir Road and the Great Western Highway
- piling in the centre of the Great Western Highway, ready for installation of the bridge structure

Upcoming activities on the Great Western Highway and M4 Motorway?

During June to August we will continue work on the on the new bridge over the Great Western Highway and M4 Motorway:

- earthworks including hammering, drilling, excavation and material stockpiling
- installation of bridge structure over the Great Western Highway
- equipment and material deliveries

Our work schedule?

During this time our work hours will be:

- Day – Monday to Friday: 7am to 6pm and Saturday 8am to 1pm
- Night – Sunday to Thursday: 8pm to 5am

As mentioned in our previous notification, night work around the new bridges will continue to be carried out until **Wednesday 31 August 2022**, excluding public holidays and weather permitting. This work will be carried out at night to lessen the disruption to traffic and improve safety for workers and road users.

Get project updates direct to your inbox

To help keep you informed You can subscribe to receive our updates via email. To subscribe scan the QR Code below and complete the subscription form or simply email us at prospecthighway@fultonhogan.com.au with your request to be added.



Detours on the Great Western Highway and M4 Motorway

Scheduled overnight closures and detours will occur at various times on the eastbound and westbound lanes of the Great Western Highway and M4 Motorway from 8pm till 5am from **Monday 20 June 2022 to Wednesday 31 August 2022**. This will ensure the work zone is safe as we undertake works to install components for the new bridge.

Electronic message signs, traffic control and reduced speed limits will be in place to direct motorists and for the safety of workers and road users. For the latest traffic updates, you can call **132 701**, visit www.livetraffic.com or download the Live Traffic NSW App

Construction Update

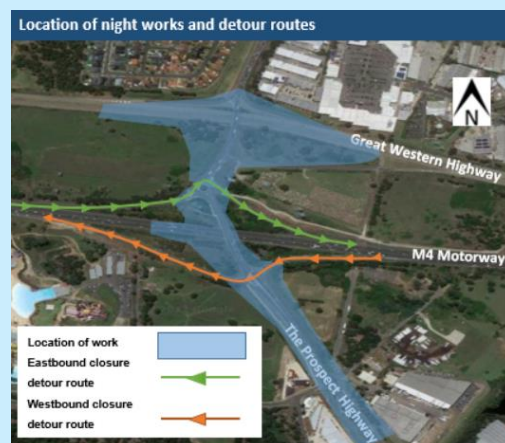
M4 Motorway - full closure westbound and eastbound lanes

East and west bound lanes of the M4 will be fully closed between M4 to Prospect Highway off ramp and the Prospect Highway to M4 on ramp for **up to nine nights** between **Monday 20 June to Friday 29 July**.

A detour will be in place for some of these closures as shown in the map opposite.

Electronic messaging signage will be activated in both directions, and traffic control and further reduced speed limits will be in place during work hours for the safety of workers and road users.

Completion of all work is dependent on a few factors including weather and site conditions and is subject to change.



Great Western Highway - full closure westbound and eastbound lanes



East and west bound lanes of the Great Western Highway will be fully closed between Ponds Road and Flushcombe Road for up to **six nights** between **Monday 4 July and Friday 19 August**.

During these periods traffic travelling eastbound on the Great Western Highway will be diverted onto the Prospect Highway and back onto the Great Western Highway at Blacktown Road.

During these periods traffic travelling westbound on the Great Western Highway will be diverted onto the M4 at Prospect Highway and back onto the Great Western Highway at Reservoir Road.

Electronic messaging signage will be activated in both directions, and traffic control and further reduced speed limits will be in place during work hours for the safety of workers and road users.

Completion of all work is dependent on a few factors including weather and site conditions and is subject to change.

Contact us

If you have any questions, please contact the Community Team on **1300 660 275** or email at prospecthighway@fultonhogan.com.au.



If you need help understanding this information, please contact the Translating and Interpreting Service on **131 450** and ask them to call us on **1300 660 275**.