

Prospect Highway upgrade Construction Update



The Australian and NSW Governments are upgrading Prospect Highway between Reservoir Road, Prospect and St Martins Crescent, Blacktown to reduce congestion and help meet future traffic demands on this corridor.

Transport for NSW has appointed Fulton Hogan to deliver the \$280 million Prospect Highway upgrade between Reservoir Road, Prospect and St Martins Crescent, Blacktown. The upgrade will improve travel time, safety and reduce congestion for all road users. It is expected to be completed in 2024.

Works progressing around the M4 Motorway and Great Western Highway

Since our last update in June, we have completed the approaches for the new bridges on both the Great Western Highway and M4 Motorway ready for the installation of the bridge components.

Upcoming activities on the Great Western Highway and M4 Motorway

During August and September, we will continue work on the new bridge over the Great Western Highway and M4 Motorway:

- earthworks including hammering, drilling, excavation and material stockpiling
- installation of bridge structure over the Great Western Highway
- equipment and material deliveries

Our work schedule

During this time, our work hours will be:

- Day – Monday to Friday: 7am to 6pm and Saturday 8am to 1pm
- Night – Sunday to Thursday: 8pm to 5am

As mentioned in our previous notification, nightwork around the new bridges will continue, except on public holidays, weather permitting. This work will be carried out at night to lessen the disruption to traffic and improve safety of workers and road users.

Lane closures on the Great Western Highway and M4 Motorway

Scheduled overnight closures will occur at various times on the eastbound and westbound lanes of the Great Western Highway and M4 Motorway from 8pm till 5am from **Monday 1 August to Friday 23 September**. This will ensure the work zone is safe while we install components for the new bridge.

Electronic message signs, traffic control and reduced speed limits will be in place to direct motorists and for the safety of workers and road users. For the latest traffic updates, you can call **132 701**, visit **www.livetraffic.com** or download the Live Traffic NSW App.

Fast facts – Our new bridges



300t of steel reinforcing used across both bridges



Over **1600m³** of concrete used with **1000m³** used in bridge over M4 Motorway alone



750t crane used to install the largest components on the M4 bridge



The new bridge over M4 Motorway is **71m** long and the new bridge over Great Western Highway is **67m** long.

Construction Update

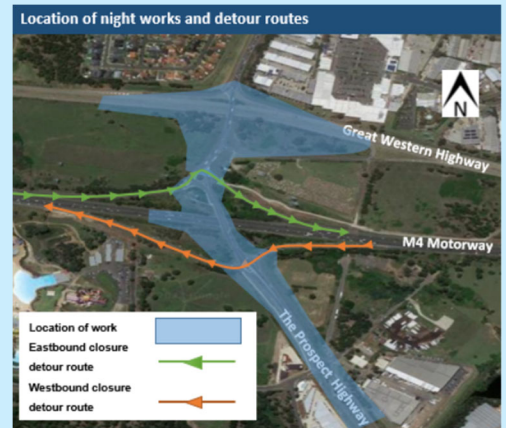
M4 Motorway - full closure westbound and eastbound lanes

East and westbound lanes of the M4 will be fully closed between M4 to Prospect Highway off ramp and the Prospect Highway to M4 on ramp for up to **seven nights** between **Tuesday 2 August to Friday 23 September**.

A detour will be in place for some of these closures as shown in the map opposite.

Electronic message signs will be activated in both directions. Traffic control and further reduced speed limits will be in place during work hours for the safety of workers and road users.

Completion of all work is dependent on a few factors including weather and site conditions and is subject to change.



Great Western Highway - full closure westbound and eastbound lanes



East and westbound lanes of the Great Western Highway will be fully closed between Ponds Road and Flushcombe Road for up to **six nights** between **Wednesday 3 August to Friday 23 September**.

During these periods, motorists travelling eastbound on the Great Western Highway will be diverted onto the Prospect Highway and back onto the Great Western Highway at Blacktown Road.

Motorists travelling westbound on the Great Western Highway will be diverted onto the M4 at Prospect Highway and back onto the Great Western Highway at Reservoir Road.

Electronic message signs will be activated in both directions. Traffic control and further reduced speed limits will be in place during work hours for the safety of workers and road users.

Completion of all work is dependent on a few factors including weather and site conditions and is subject to change.

Completion of all work is dependent on a few factors including weather and site conditions and is subject to change.

Contact us

If you have any questions, please contact the Community Team on **1300 660 275** or email at prospecthighway@fultonhogan.com.au.



If you need help understanding this information, please contact the Translating and Interpreting Service on **131 450** and ask them to call us on **1300 660 275**.