

# Night work continuing at the Prospect Highway and Reservoir Road intersection, Prospect from 1 October

September 2021

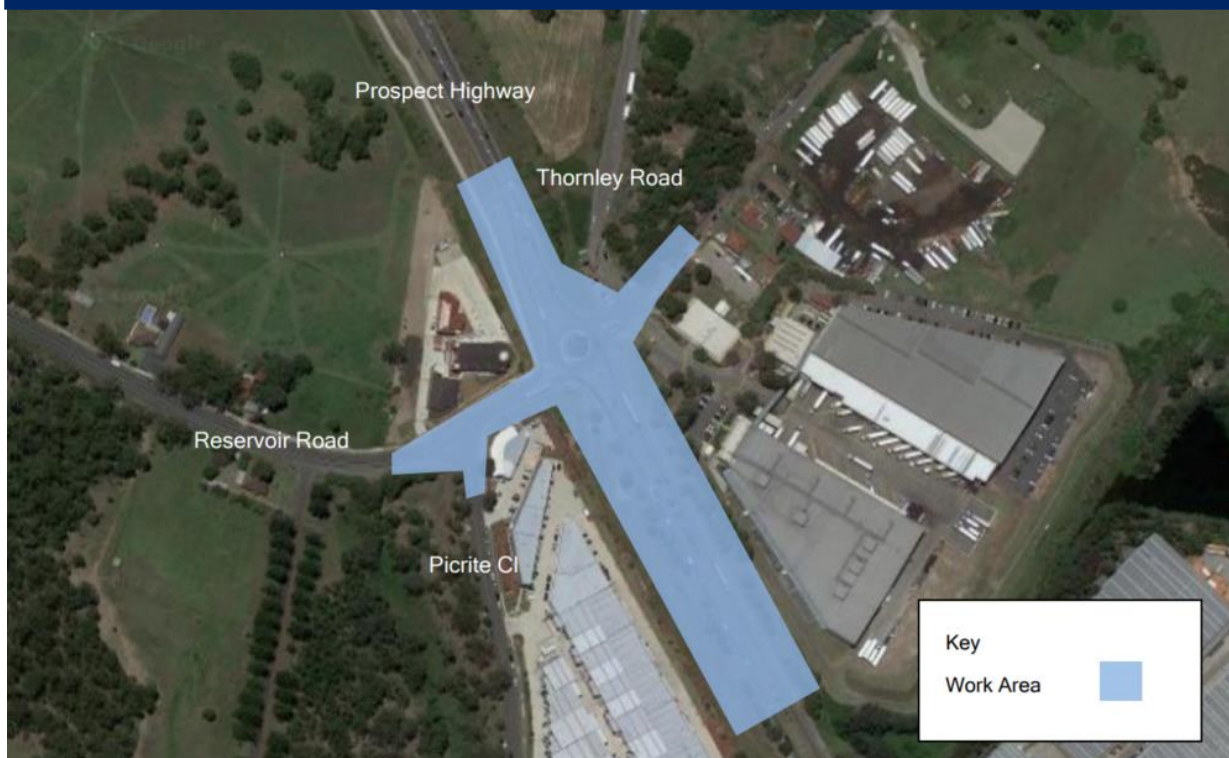
The NSW Government is upgrading Prospect Highway between Reservoir Road, Prospect and St Martins Crescent, Blacktown to reduce congestion and help meet future traffic demands on this corridor.

Transport for NSW has engaged Ausconnex to carry out early work on Prospect Highway between Blacktown Road and St Martins Crescent. Over the next two months, Ausconnex will carry out key utility relocation work required for the future upgrade.

This work includes relocating the existing 33KV and 11KV electrical network at the Prospect Highway and Reservoir Road intersection.

The safety and wellbeing of our workforce and the wider community is our highest priority. This work is in line with the Public Health Order and a COVID-Safe plan is in place, including masks and QR codes.

## Location of night work at the Prospect Highway and Reservoir Road intersection



## Our work schedule

We need to carry out some of this work at night to lessen the disturbance on traffic and improve safety for workers and road users. We will be on site for up to 10 night shifts between Friday 1 October and Sunday 31 October, weather permitting.

Our work hours will be:

- Monday to Sunday: 9pm to 5am

## How will the work affect you?

Our work may be noisy at times during the night time but we will do everything we can to lessen the disturbance of this work on surrounding residents and businesses. Any high noise impact works such as cutting the road asphalt will be undertaken before 11pm.

We will carry out this work in accordance with the NSW Environmental Protection Authority (EPA) and the Environmental Protection Licence (EPL) requirements including the following to provide some relief:

- no more than two consecutive evenings or nights per week
- no more than three evenings or nights per week
- no more than 10 evenings or nights per month

## Traffic changes

There will be temporary traffic changes during our work hours to ensure the work zone is safe. Please keep to speed limits and follow signs and traffic controllers' directions.

For the latest traffic updates, you can call 132 701, visit [livetraffic.com](http://livetraffic.com) or download the Live Traffic NSW App.

Thank you for your patience during this important work.

### Contact us

If you have any questions, please contact our delivery partner, Ausconnex:



0466 520 143



[prospecthighway@transport.nsw.gov.au](mailto:prospecthighway@transport.nsw.gov.au)



<https://roads-waterways.transport.nsw.gov.au>



If you need help understanding this information, please contact the Translating and Interpreting Service on **131 450** and ask them to call us on 0466 520 143.