



Appendix 5 - Proposed new road corridor

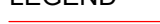







100 mm ON ORIGINAL
 25 30 35 40 45 50 55 60 65 70 75 80 85 90 95 100
 DRAWING FILE LOCATION NAME
 T:\Projects\30011177\CAD\DWG\4_1_FW_Property_Works\30011177-DP-W-0200_02.dwg
 TIME
 12:51:31
 PLOT DATE
 21 Feb 2013



LEGEND

-  EXISTING PROPERTY BOUNDARY AS INDICATED IN THE EXISTING CADASTRAL INFORMATION
-  ROAD CORRIDOR
-  WATER QUALITY BASIN
-  PROPOSED DESIGN

DESIGN MODEL FILE(S) USED FOR DOCUMENTATION OF THIS DRAWING
 30011177_RB_OPT_D_121204_01.TXT & 30011177_RB_OPT_F_121204_01.TXT


NOT FOR CONSTRUCTION

No	Amendment Description	Initials	Date
02	RE-ISSUED FOR FINAL STRATEGIC CONCEPT DESIGN	BH	21.02.2013
01	FINAL STRATEGIC CONCEPT DESIGN	BH	14.02.2013
No			

A3 original This sheet may be prepared using colour and may be incomplete if copied



SCALES

SCALE 1:10000



Co-ordinate System: MGA Zone 56 Height Datum: AHD

CONSULTANT

SMEC AUSTRALIA PTY LTD
 ABN 47 066 475 149
 LEVEL 6, 76 BERRY STREET
 NORTH SYDNEY NSW 2060
 PH 02 9625 5555 FAX 02 9625 5566

DESIGNED: M.MEJIA REVIEWED: R. ESTRADA

ROADS AND MARITIME SERVICES
 CITY OF HAWKESBURY
 MR184 RICHMOND BRIDGE AND APPROACHES
 CONGESTION STUDY STRATEGIC OPTIONS AT RICHMOND
 REVISED ROAD CORRIDOR FROM NORTH RICHMOND TO RICHMOND
 OVERALL PLAN

FILE No D/00428.PMD.05	DRAWING 30011177-DPW-0200	PRINTED DATE 21/02/13	SEQUENCE No P22
REGISTRATION NUMBER DS2012/001242			

LEGEND

- EXISTING PROPERTY BOUNDARY AS INDICATED IN THE EXISTING CADASTRAL INFORMATION
- ROAD CORRIDOR
- WATER QUALITY BASIN
- PROPOSED DESIGN



JOINS DRG DPW-0202

NOT FOR CONSTRUCTION

100 mm ON ORIGINAL
 25 30 35 40 45 50 55 60 65 70 75 80 85 90 95 100
 DRAWING FILE LOCATION NAME
 T:\Projects\30011177\CAD\DWG\4_1_fw_Property_Works\30011177-DPW-0201_021.dwg
 TIME
 21 Feb 2013
 12:58:31

DESIGN MODEL FILE(S) USED FOR DOCUMENTATION OF THIS DRAWING
 30011177_RB_OPT_D_121204_01.TXT & 30011177_RB_OPT_F_121204_01.TXT

No	Amendment Description	Initials	Date
02	RE-ISSUED FOR FINAL STRATEGIC CONCEPT DESIGN BH		21.02.2013
01	FINAL STRATEGIC CONCEPT DESIGN	BH	14.02.2013
No			

A3 original This sheet may be prepared using colour and may be incomplete if copied

SCALES

SCALE 1:2500

Co-ordinate System: MGA Zone 56 Height Datum: AHD

CONSULTANT

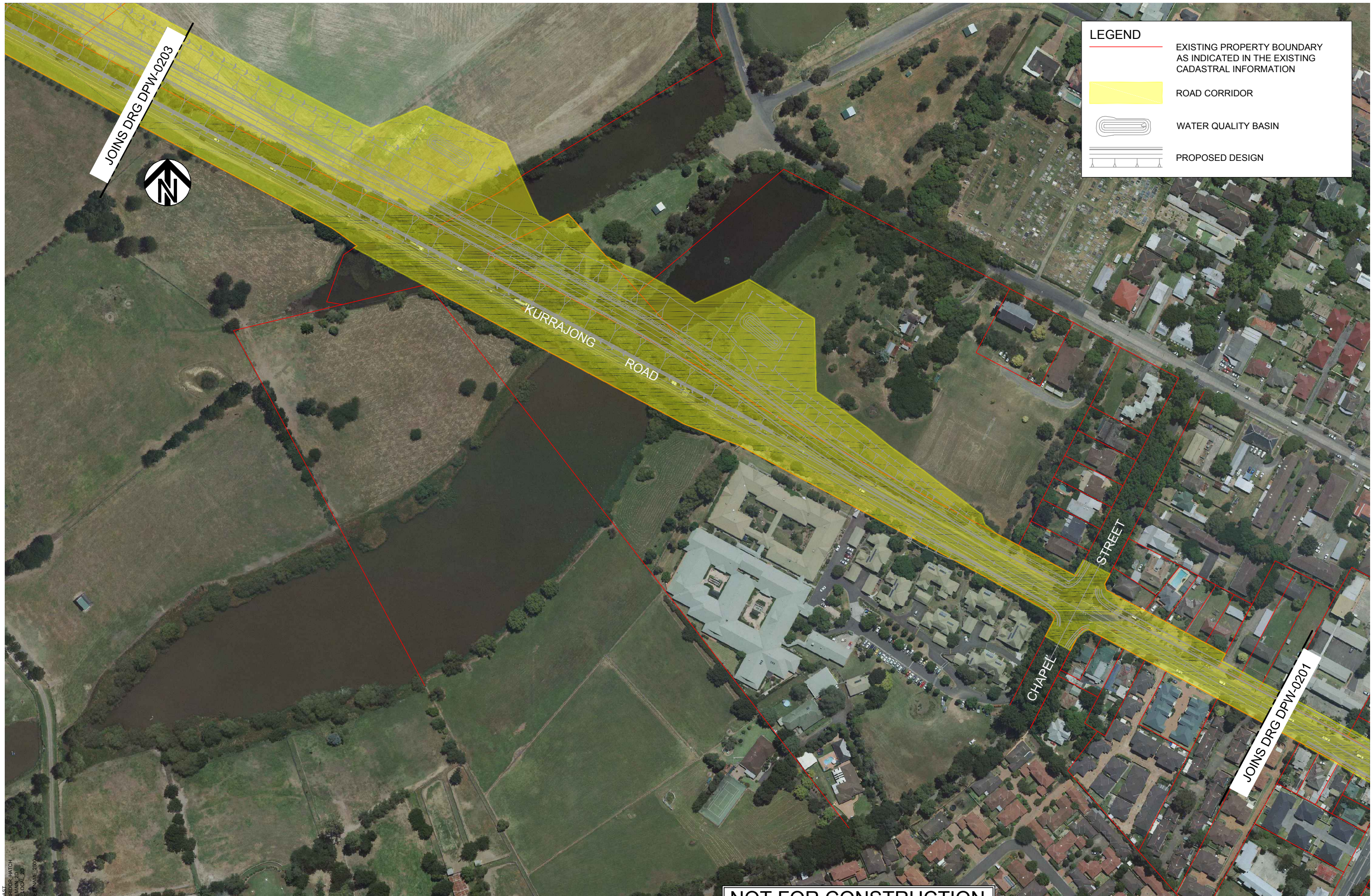
SMEC AUSTRALIA PTY LTD
 ABN 47 066 475 149
 LEVEL 6 78 BERRY STREET
 NORTH SYDNEY NSW 2060
 PH 02 9625 9555 FAX 02 9625 5566

DESIGNED: M.MEJIA REVIEWED: R. ESTRADA





ROADS AND MARITIME SERVICES
 CITY OF HAWKESBURY
 MR184 RICHMOND BRIDGE AND APPROACHES
 CONGESTION STUDY STRATEGIC OPTIONS AT RICHMOND
 REVISED ROAD CORRIDOR FROM NORTH RICHMOND TO RICHMOND
 SHEET 1

FILE No D/00428.PMD.05	DRAWING 30011177-DPW-0201	PRINTED DATE 21/02/13	SEQUENCE No P23
REGISTRATION NUMBER DS2012/001242			

100 mm ON ORIGINAL
 25 30 35 40 45 50 55 60 65 70 75 80 85 90 95 100
 DRAWING FILE LOCATION NAME
 T:\Projects\30011177\CAD\DWG\4_1_FW_Property_Works\30011177-DP-W-0202_021.dwg
 TIME
 12:59:32
 PLOT DATE
 21 Feb 2013



LEGEND

-  EXISTING PROPERTY BOUNDARY AS INDICATED IN THE EXISTING CADASTRAL INFORMATION
-  ROAD CORRIDOR
-  WATER QUALITY BASIN
-  PROPOSED DESIGN


NOT FOR CONSTRUCTION

DESIGN MODEL FILE(S) USED FOR DOCUMENTATION OF THIS DRAWING
 30011177_RB_OPT_D_121204_01.TXT & 30011177_RB_OPT_F_121204_01.TXT

No	Amendment Description	Initials	Date
02	RE-ISSUED FOR FINAL STRATEGIC CONCEPT DESIGN BH		21.02.2013
01	FINAL STRATEGIC CONCEPT DESIGN	BH	14.02.2013
No			



SCALES

SCALE 1:2500



Co-ordinate System: MGA Zone 56
 Height Datum: AHD

CONSULTANT

SMEC AUSTRALIA PTY LTD
 ABN 47 066 475 149
 LEVEL 6, 76 BERRY STREET
 NORTH SYDNEY NSW 2060
 PH 02 9629 5555 FAX 02 9629 5566

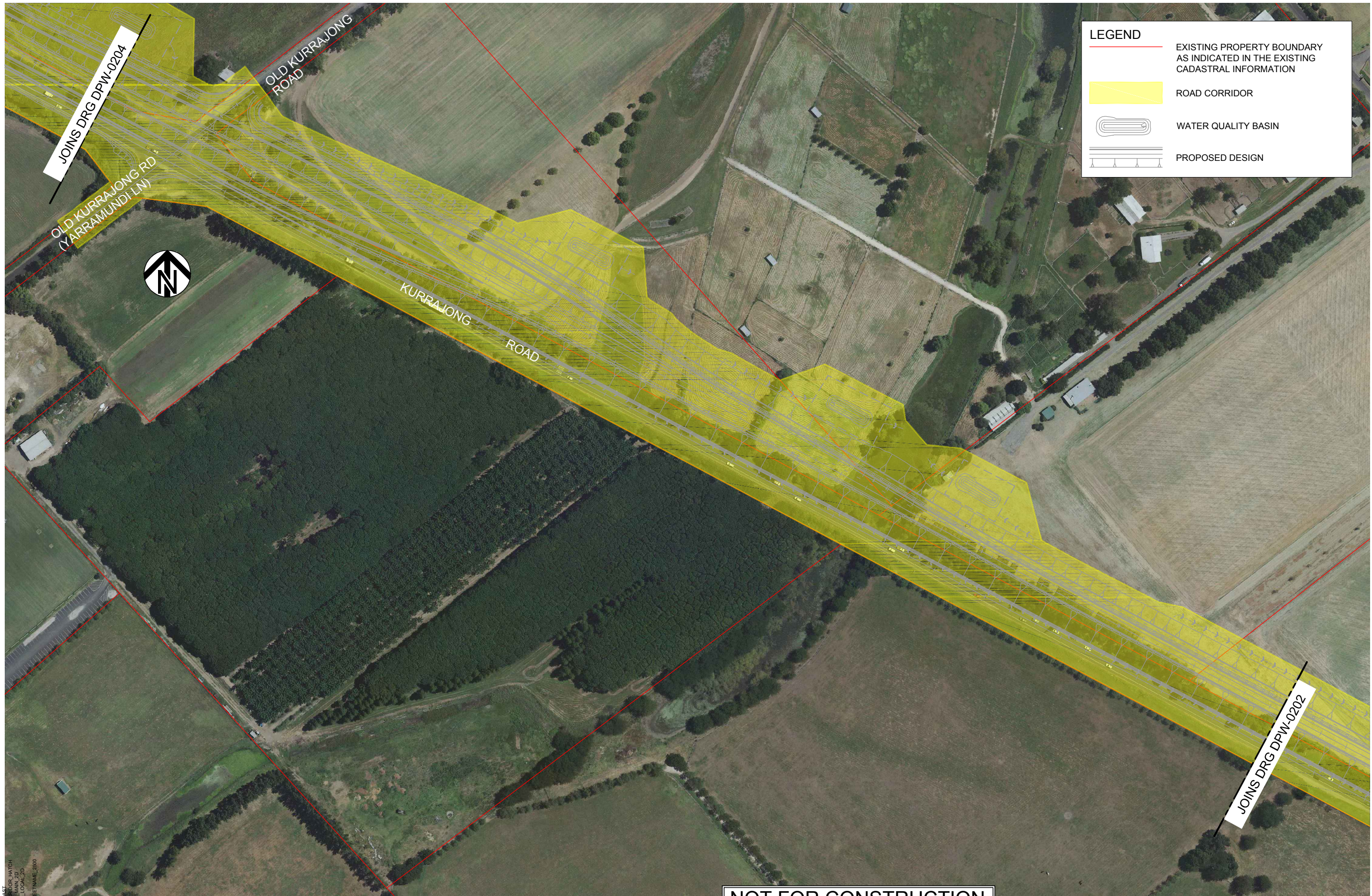
DESIGNED: M.MEJIA
 REVIEWED: R. ESTRADA

ROADS AND MARITIME SERVICES
 CITY OF HAWKESBURY
 MR184 RICHMOND BRIDGE AND APPROACHES
 CONGESTION STUDY STRATEGIC OPTIONS AT RICHMOND
 REVISED ROAD CORRIDOR FROM NORTH RICHMOND TO RICHMOND
 SHEET 2

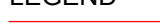



FILE No D/00428.PMD.05	DRAWING 30011177-DPW-0202	PRINTED DATE 21/02/13	SEQUENCE No P24
REGISTRATION NUMBER DS2012/001242			

EXTERNAL REFERENCE FILES
 X:\RISINSING_CAD
 X:\LEG_PW_2500
 X:\FRAME_2500
 X:\CADLAST
 X:\CORRIDOR_HATCH
 X:\DE_SIGN_JD
 X:\DRG_BLOCK_70
 X:\DRG_BLOCK_70
 X:\S_STREET_NAME_2500

100 mm ON ORIGINAL
 25 30 35 40 45 50 55 60 65 70 75 80 85 90 95 100
 DRAWING FILE LOCATION NAME
 T:\Projects\30011177\CAD\DWG\41_FW_Property_Works\30011177-DPW-0203_021.dwg
 TIME
 13:00:32
 PLOT DATE
 21 Feb 2013



LEGEND

-  EXISTING PROPERTY BOUNDARY AS INDICATED IN THE EXISTING CADASTRAL INFORMATION
-  ROAD CORRIDOR
-  WATER QUALITY BASIN
-  PROPOSED DESIGN

NOT FOR CONSTRUCTION

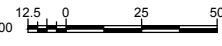
No	Amendment Description	Initials	Date
02	RE-ISSUED FOR FINAL STRATEGIC CONCEPT DESIGN	BH	21.02.2013
01	FINAL STRATEGIC CONCEPT DESIGN	BH	14.02.2013
No			

A3 original This sheet may be prepared using colour and may be incomplete if copied

DESIGN MODEL FILE(S) USED FOR DOCUMENTATION OF THIS DRAWING
 30011177_RB_OPT_D_121204_01.TXT & 30011177_RB_OPT_F_121204_01.TXT

SCALES

SCALE 1:2500



Co-ordinate System: MGA Zone 56 Height Datum: AHD

CONSULTANT



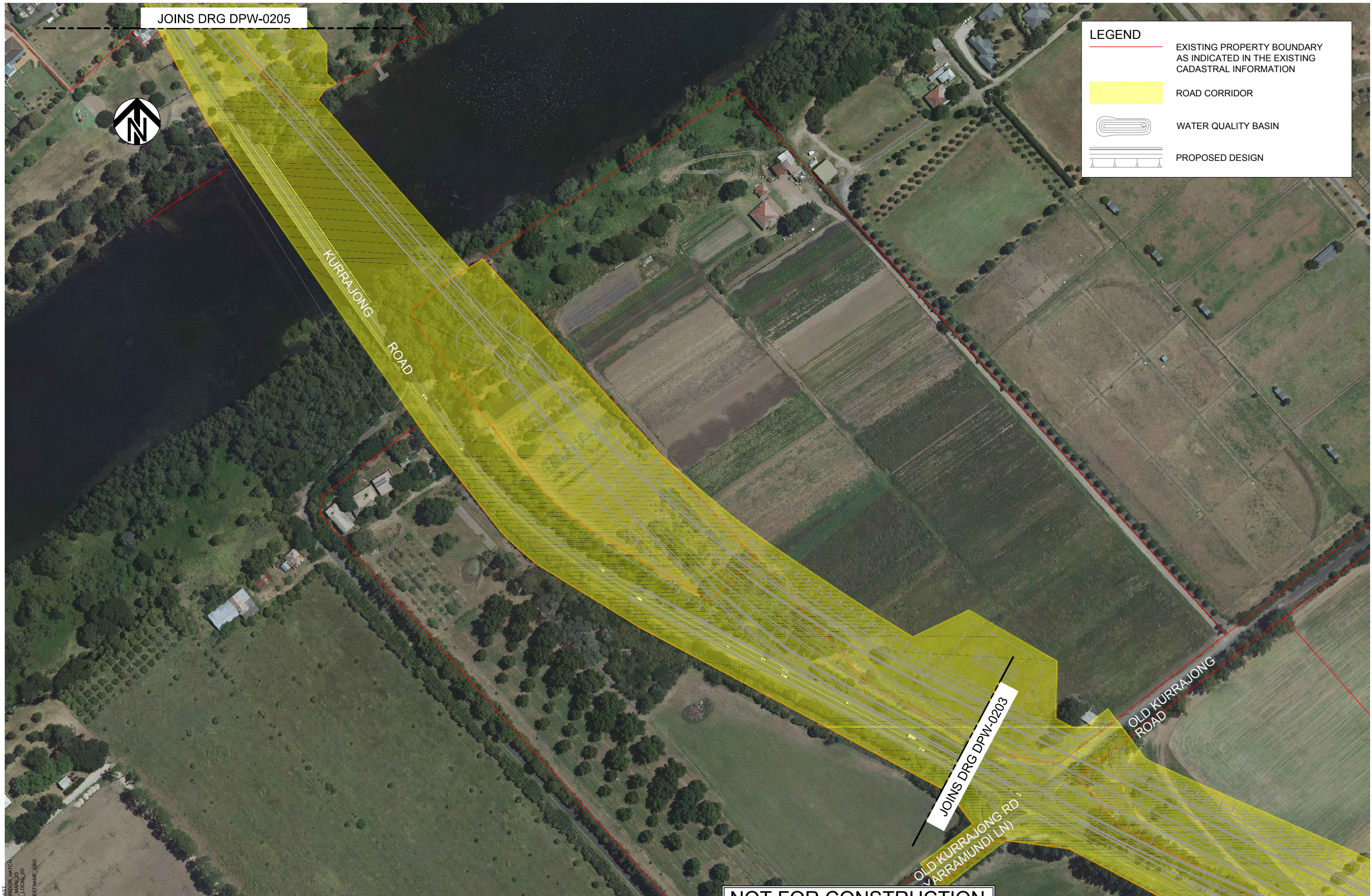

SMEC AUSTRALIA PTY LTD
 ABN 47 066 475 149
 LEVEL 6 76 BERRY STREET
 NORTH SYDNEY NSW 2060
 PH 02 9620 5555 FAX 02 9620 5566

DESIGNED: M.MEJIA REVIEWED: R.ESTRADA

ROADS AND MARITIME SERVICES
 CITY OF HAWKESBURY
 MR184 RICHMOND BRIDGE AND APPROACHES
 CONGESTION STUDY STRATEGIC OPTIONS AT RICHMOND
 REVISED ROAD CORRIDOR FROM NORTH RICHMOND TO RICHMOND
 SHEET 3

FILE No D/00428.PMD.05	DRAWING 30011177-DPW-0203	PRINTED DATE 21/02/13	SEQUENCE No P25
REGISTRATION NUMBER DS2012/001242			

100 mm ON ORIGINAL
 25 30 35 40 45 50 55 60 65 70 75 80 85 90 95 100
 DRAWING FILE LOCATION NAME
 T:\Projects\30011177\CAD\DWG\4_1_FW_Property_Works\30011177-DP-W-0204_021.dwg
 TIME
 13:01:33
 PLOT DATE
 21 Feb 2013



JOINS DRG DPW-0205



LEGEND

- EXISTING PROPERTY BOUNDARY AS INDICATED IN THE EXISTING CADASTRAL INFORMATION
- ROAD CORRIDOR
- WATER QUALITY BASIN
- PROPOSED DESIGN

KURRAJONG ROAD

JOINS DRG DPW-0203

OLD KURRAJONG ROAD

OLD KURRAJONG RD
 (VARRAMUNDI LN)

NOT FOR CONSTRUCTION

DESIGN MODEL FILE(S) USED FOR DOCUMENTATION OF THIS DRAWING
 30011177_RB_OPT_D_121204_01.TXT & 30011177_RB_OPT_F_121204_01.TXT

No	Amendment Description	Initials	Date
02	RE-ISSUED FOR FINAL STRATEGIC CONCEPT DESIGN BH		21.02.2013
01	FINAL STRATEGIC CONCEPT DESIGN	BH	14.02.2013
No			

A3 original This sheet may be prepared using colour and may be incomplete if copied

SCALES

SCALE 1:2500

Co-ordinate System: MGA Zone 56 Height Datum: AHD

CONSULTANT

SMEC AUSTRALIA PTY LTD
 ABN 47 066 475 149
 LEVEL 6, 76 BERRY STREET
 NORTH SYDNEY NSW 2060
 PH 02 9620 5555 FAX 02 9620 5566

DESIGNED: M.MEJIA REVIEWED: R. ESTRADA

ROADS AND MARITIME SERVICES
 CITY OF HAWKESBURY
 MR184 RICHMOND BRIDGE AND APPROACHES
 CONGESTION STUDY STRATEGIC OPTIONS AT RICHMOND
 REVISED ROAD CORRIDOR FROM NORTH RICHMOND TO RICHMOND
 SHEET 4

FILE No D/00428.PMD.05	DRAWING 30011177-DPW-0204	PRINTED DATE 21/02/13	SEQUENCE No P26
REGISTRATION NUMBER DS2012/001242			

TIME 13:02:35
PLOT DATE 21 Feb 2013

DRAWING FILE LOCATION NAME
T:\Projects\30011177\CAD\DWG\41_FW_Property_Works\30011177-DPW-0205_021.dwg

EXTERNAL REFERENCE FILES

100 mm ON ORIGINAL

25 30 35 40 45 50 55 60 65 70 75 80 85 90 95 100

X:\RISINSING_C\3
X:\LEG_PW_2000
X:\FRAME_2500
X:\CAD\ASST
X:\CORRIDOR\HATCH
X:\DESIGN\DWG
X:\DESIGN\DWG
X:\DESIGN\DWG
X:\DESIGN\DWG
X:\DESIGN\DWG



DESIGN MODEL FILE(S) USED FOR DOCUMENTATION OF THIS DRAWING
30011177_RB_OPT_D_121204_01.TXT & 30011177_RB_OPT_F_121204_01.TXT

NOT FOR CONSTRUCTION

No	Amendment Description	Initials	Date
02	RE-ISSUED FOR FINAL STRATEGIC CONCEPT DESIGN	BH	21.02.2013
01	FINAL STRATEGIC CONCEPT DESIGN	BH	14.02.2013
No			

SCALES	
SCALE 1:2500	12.5 0 25 50
Co-ordinate System: MGA Zone 56	Height Datum: AHD

CONSULTANT

 SMC AUSTRALIA PTY LTD
 ABN 47 066 475 149
 LEVEL 6 78 BERRY STREET
 NORTH SYDNEY NSW 2060
 PH (02) 9629 5555 FAX (02) 9629 5556

ROADS AND MARITIME SERVICES
 CITY OF HAWKESBURY
 MR184 RICHMOND BRIDGE AND APPROACHES
 CONGESTION STUDY STRATEGIC OPTIONS AT RICHMOND
 REVISED ROAD CORRIDOR FROM NORTH RICHMOND TO RICHMOND
 SHEET 5

FILE No D/00428.PMD.05	DRAWING 30011177-DPW-0205	PRINTED DATE 21/02/13	SEQUENCE No P27
REGISTRATION NUMBER DS2012/001242			