

Community Update | August 2022

Southern Link Road corridor

A future east-west link between Mamre Road and Wallgrove Road



Bakers Ln, looking West, out front of Emmaus College

The NSW Government is proposing a new 7.5 kilometre road corridor to support the current and future employment growth in the Western Sydney Employment Area (WSEA).

Background

Southern Link Road is a proposed new east-west corridor that would provide an additional link between Mamre Road, Kemps Creek and Wallgrove Road, Horsley Park. Southern Link Road is expected to be around 7.5 kilometres long and provide access to the future industrial development that would create employment and economic growth in the surrounding Western Sydney area.

The project will cater for regional traffic connectivity to the Western Sydney Employment Area (WSEA) and the Western Parkland City developments.

In 2014, the Department of Planning & Environment (DPE) published the Southern Link Road Network Options and Refinement report. Since then, the future land-use proposals for the surrounding area have evolved through the Mamre Road Precinct rezoning package. As a result, Transport for NSW has continued to investigate the best alignment for this important future connection.

Have your say on the preferred alignment

Transport has identified a preferred alignment for the Southern Link Road corridor to facilitate economic growth by unlocking development and employment opportunities. The preferred alignment would service the expanding WSEA including the Mamre Road Precinct.

We welcome feedback from the community and stakeholders on the preferred alignment by **Friday 16 September 2022**.

Project objectives

- Provide a new road corridor within WSEA to facilitate economic growth by unlocking development and employment opportunities
- Provide safe, reliable and efficient access for employees and freight between WSEA and the wider state road network
- Achieve increased road capacity in the network to meet future traffic and transport demand
- Cater for pedestrians, cyclists, and public transport in terms of accessibility, connectivity, safety and amenity.

Southern Link Road corridor

Considered options

Transport is continuing to plan this corridor between Mamre Road and Wallgrove Road to achieve the best possible outcome that considers future development and transport needs in the area.

As a result of our continuing investigation and planning, we are proposing to change the route alignment at the eastern end of the corridor, around the area near Reedy Creek:

2014 Alignment

- Moved to the north, following the Reedy Creek corridor, towards the Water NSW Pipeline
- Crossed through vacant land and connected to Wallgrove Road and the M7 Motorway near the pipeline
- Although having the road through open land will be beneficial, this alignment would clash with the confirmed Western Sydney Freight Line Corridor and need to avoid existing transmission lines.

2022 Preferred Alignment

- Will continue directly east along the Burley Road corridor, to create a future connection with Chandos Road at Wallgrove Road
- Will provide better future transport access and help support future development in the area.

How did we select the preferred alignment?

The development process to identify a preferred alignment included consultation with key stakeholders at a range of workshops and meetings.

Further information on the 2022 preferred alignment and how we developed it can be found in the Preferred Options Report, which is now available for community feedback at nswroads.work/southernlinkroad.

We are seeking feedback on the 2022 preferred alignment to help plan for this important future transport connection.

Western Sydney Transport projects

Transport is continuing to plan for the future Transport network in Western Sydney.

Other projects being investigated in the area that will support the future transport network include:

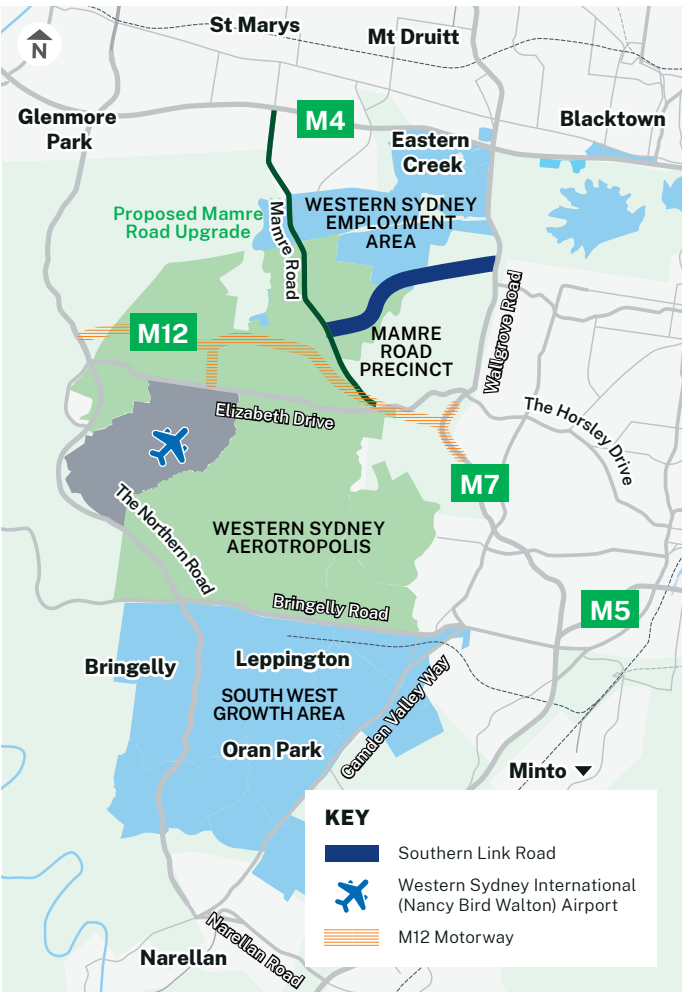
- Western Sydney Freight Line
- Western Sydney Airport
- Western Sydney Intermodal Terminal
- M12 Motorway
- Planned road upgrades:
 - Elizabeth Drive
 - Archbold Road
 - Mamre Road
 - The Horsley Drive

For more information on our road projects, visit our website at nswroads.work.

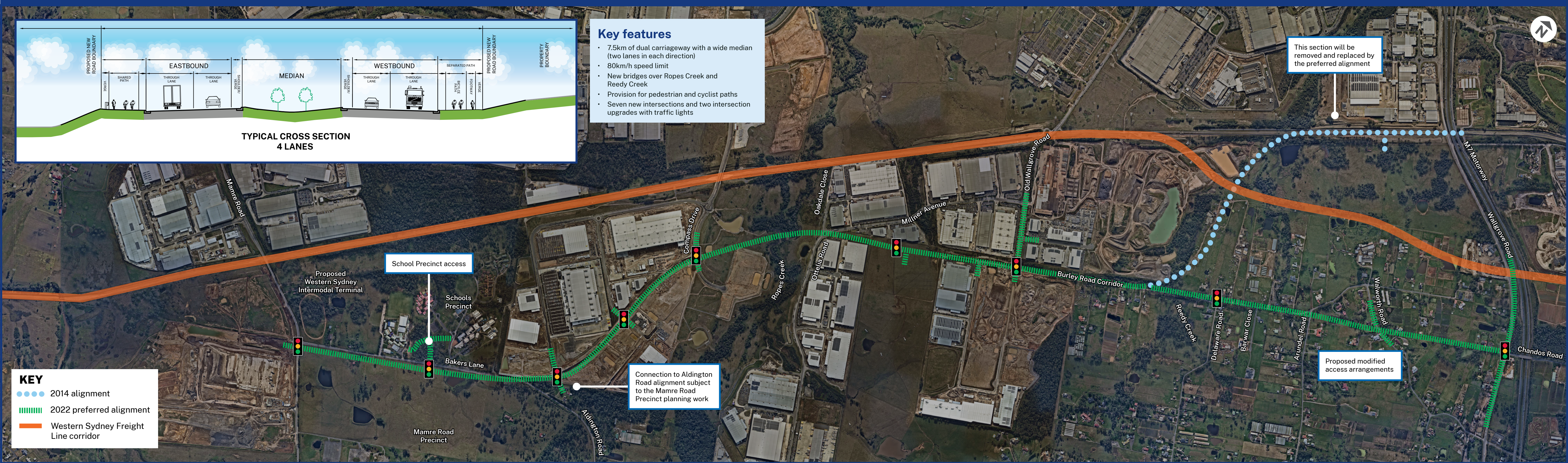
Planning Proposals in the area:

- Mamre Road Precinct (Development Control Plan was approved in 2021)
- Western Sydney Aerotropolis Plan
- Fairfield Rural Land Urban Investigation Area.

Southern Link Road corridor



Upcoming work



How can I get involved?

In response to the evolving Coronavirus situation, Transport is following NSW Health advice and changing the way it approaches community consultation for important transport infrastructure projects.

It is important for the community to have their say, and we are using different ways to consult, to ensure the community can practice social distancing and limit the potential spread of Coronavirus.

COVID safe measures

Transport for NSW supports the Government's response to COVID-19. We continue to work closely with NSW Health and other government agencies, as well as external operators state-wide to ensure the safety of customers and help prevent the spread of Coronavirus.

Online community information session

We will also hold an online community information session via Microsoft Teams at nswroads.work/SLRinfosession

Date: Thursday 1 September

Time: 4pm – 4.30pm

During this session you can find out more about the project from the relevant team members and ask questions about the preferred alignment.

If you are not able to join the online session there are many other ways to have your questions answered by the team, provide your feedback and get the information you need. You can:

Phone: 1800 717 688

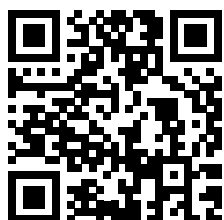
Email: southernlinkroad@transport.nsw.gov.au

Write: PO Box 973, Parramatta NSW 2124

Consultation closes on **Friday 16 September 2022.**

Interactive portal map

Scan the QR code to visit our interactive portal map on the project website:



What happens next?

At the end of the consultation period we will summarise comments received and publish our responses in a Community Consultation Report. The report will be available on the project website. If you submit feedback we will let you know directly when the report is available.

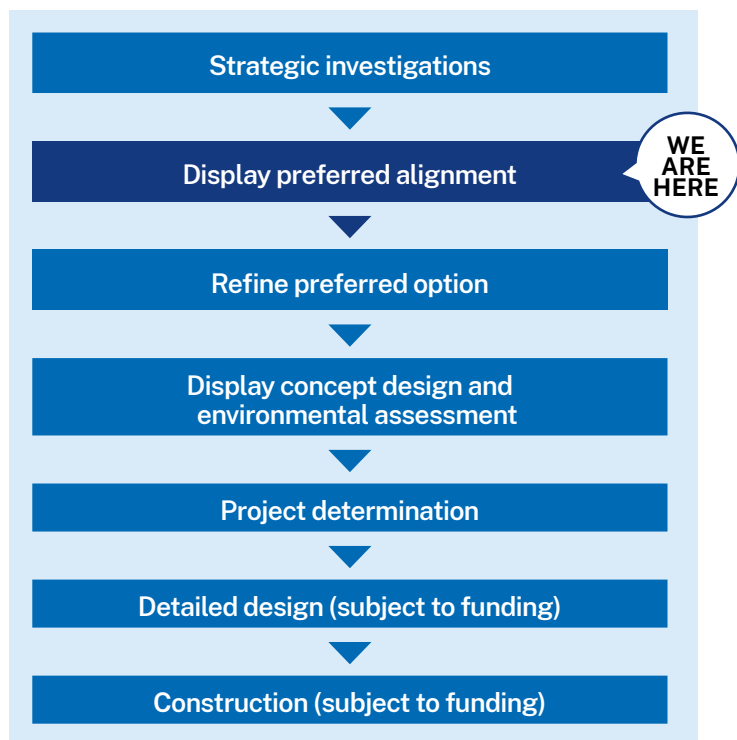
We will continue to keep community members and other stakeholders informed as the project progresses.

For more information about Southern Link Road visit our website nswroads.work/southernlinkroad.



Emporium Avenue looking north

Project development process



Contact us

If you have any questions please contact:



1800 717 688



southernlinkroad@transport.nsw.gov.au



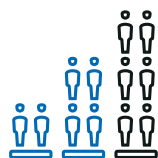
nswroads.work/southernlinkroad



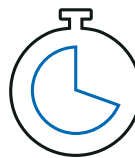
Southern Link Road Corridor
PO Box 973, Parramatta NSW 2124



If you need help understanding this information, please contact the Translating and Interpreting Service on **131 450** and ask them to call us on **1800 717 688**.



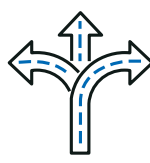
Catering for
Sydney's growth



Better and more
reliable trips
for people, business and freight



Job creation
and economic
benefits



Providing
essential access

August 2022
22.189

Privacy Transport for NSW ("TfNSW") is subject to the Privacy and Personal Information Protection Act 1998 ("PPIP Act") which requires that we comply with the Information Privacy Principles set out in the PPIP Act. All information in correspondence is collected for the sole purpose of assisting in the delivery of this project. The information received, including names and addresses of respondents, may be published in subsequent documents unless a clear indication is given in the correspondence that all or part of that information is not to be published. Otherwise TfNSW will only disclose your personal information, without your consent, if authorised by the law. Your personal information will be held by TfNSW at 27 Argyle Street, Parramatta. You have the right to access and correct the information if you believe that it is incorrect.