



Australian Government

**BUILDING OUR FUTURE**



November 2017

## Airport East precinct upgrade – Traffic changes on Joyce Drive

**The Australian and NSW Governments are upgrading roads east of Sydney Airport to improve traffic flow and access to the airport and Port Botany.**

There will be temporary traffic changes for westbound motorists on Joyce Drive between General Holmes Drive and Sir Reginald Ansett Drive, from **Friday 24 November until 13 December 2017**, weather permitting.

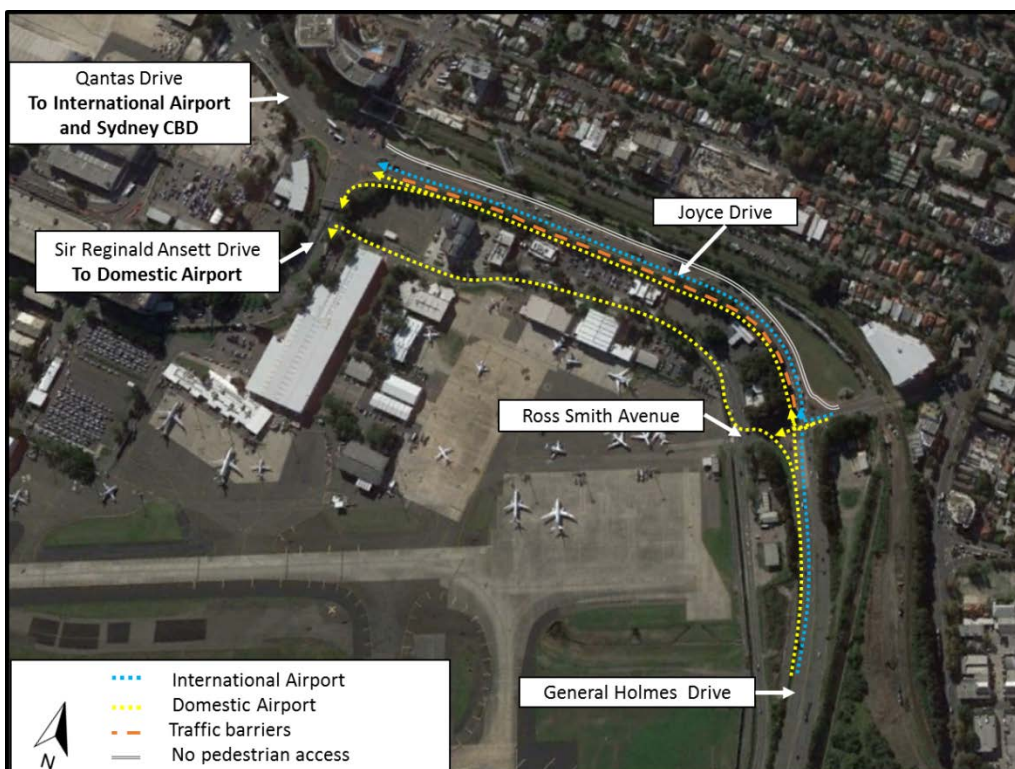
We are progressing well with work to widen Joyce Drive in this area and have some new road ready on the westbound side, closest to Sydney Airport. To allow us to carry out work towards the middle of the westbound side, we will move the left lane over on to this newly constructed road. The right lane will remain in the same place.

This change will mean:

- safety barriers will separate the two westbound lanes
- westbound motorists will not be able to change lanes in this area
- left turn into the Domestic Airport (Sir Reginald Ansett Drive) will be from the left lane only. Motorists travelling to the Domestic Airport need to be in the left lane before the traffic lights at Ross Smith Avenue.
- the speed limit will be reduced to **50km/h**

Motorists travelling to the Domestic Airport can turn left into Ross Smith Avenue from General Holmes Drive or turn left into Sir Reginald Ansett Drive from the **left lane only** on Joyce Drive. There is no change for eastbound motorists in this area.

### Location of the traffic changes



This change will be in place until **Wednesday 13 December**, when we will move both of the westbound lanes on to the new road surface.

There will be no pedestrian access along the eastern side of Joyce Drive from **Tuesday 12 December** as construction work will start in this area.

Traffic and electronic message signs will help keep motorists informed of the changes in the area.

Please keep to speed limits as roadwork speed limits are enforceable and follow the direction of traffic controllers and signs. For the latest traffic updates, you can call 132 701, visit [livetraffic.com](http://livetraffic.com) or download the Live Traffic NSW App.

## Construction hours

Standard construction hours for the project are between **7am** and **6pm** from Monday to Friday and between **8am** and **1pm** on Saturday, excluding public holidays.

Out of hours work is necessary on this project due to the traffic conditions in the area and the limitations of working next to the Sydney Airport east west runway and the Port Botany Freight Rail Line. Night work will be carried out between **9pm** and **5am**, up to five nights a week, weather permitting.

## Contact

If you have any questions, please contact our delivery partner John Holland Group on **1300 862 844** or [comms.airporteast@jhg.com.au](mailto:comms.airporteast@jhg.com.au). For more information on this project, visit [www.rms.nsw.gov.au/sydneyairport](http://www.rms.nsw.gov.au/sydneyairport).

Thank you for your patience during this important work.



### Translating and Interpreting Service

If you need an interpreter, please call the Translating and Interpreting Service (TIS National) on **131 450** and ask them to telephone Roads and Maritime Services on 1300 862 844

#### Arabic

إذا كنتم بحاجة إلى مترجم، الرجاء الاتصال بخدمة الترجمة الخطية والشفهية (TIS National) على الرقم 1300 862 844، والطلب منهم الاتصال بوكالتكم Roads and Maritime Services على الرقم 1300 862 844

#### Cantonese

若你需要口譯員，請致電 **131 450** 聯絡翻譯和口譯服務署 (TIS National)，要求他們致電 1300 862 844 聯絡 Roads and Maritime Services。

#### Mandarin

如果你需要口译员，请致电 **131 450** 联系翻译和口译服务署 (TIS National)，要求他们致电 1300 862 844 联系 Roads and Maritime Services。

#### Greek

Αν χρειάζεστε διερμηνέα, παρακαλείστε να τηλεφωνήσετε στην Υπηρεσία Μετάφρασης και Διερμηνείας (Εθνική Υπηρεσία TIS) στο **131 450** και ζητήστε να τηλεφωνήσουν Roads and Maritime Services στο 1300 862 844

#### Italian

Se desiderate l'assistenza di un interprete, prego telefonare al Servizio Interpreti e Traduttori (TIS National) al **131 450** chiedendo di contattare Roads and Maritime Services al 1300 862 844

#### Korean

통역사가 필요하시면 번역통역서비스 (TIS National) 에 **131 450** 으로 연락하여 이들에게 1300 862 844 번으로 Roads and Maritime Services 에 전화하도록 요청하십시오.

#### Vietnamese

Nếu cần thông ngôn viên, xin quý vị gọi cho Dịch Vụ Thông Phiên Dịch (TIS Toàn Quốc) qua số **131 450** và nhờ họ gọi cho Roads and Maritime Services qua số 1300 862 844