



Australian Government

**BUILDING OUR FUTURE**



January 2017

## **Airport East precinct upgrade – early work and setting up the site compounds**

**The Australian and NSW Governments are upgrading roads in the Sydney Airport East precinct to improve traffic flow and access to the airport and Port Botany.**

Following a competitive tendering process, Roads and Maritime Services has contracted John Holland to deliver the Airport East project. Major work on the project is scheduled to start in early 2017, and is expected to take about two years to complete.

### **Early work**

In January 2017, we will start preparing for major work on the project including carrying out investigation work in the project area. This involves surveying and digging several small holes to confirm the location of existing utilities. Information gathered from these investigations will help us finalise the utility design for the project and prepare for the start of major work.

To allow us to work safely, we will install temporary traffic barriers on Botany Road, General Holmes Drive and Joyce Drive. We will also carry out some adjustments to line marking and traffic signals which will be in place throughout construction. Electronic message signs will be in place to advise motorists of any traffic changes.

We will also start trimming vegetation and removing trees in the project area. This work needs to be done to enable widening of Joyce Drive and General Holmes Drive, and allow for the new underpass at Botany Road. Before this starts, a qualified ecologist will attend to identify and relocate any fauna habitats.

### **Setting up the site compound**

Roads and Maritime will establish two site compounds, which will be used throughout the project. Activities to be carried out at the compounds include some ground material testing, storage and processing, construction equipment assembly, car and construction vehicle parking, and site office facilities work.

The site compounds will be located at:

- Ascot Lodge, between Botany Road and General Holmes Drive, near the rail level crossing
- Corner of Wentworth Avenue, Botany Road and Beresford Street.

We have provided a map with the location of the site compounds.

---

Work to establish the temporary site compounds includes:

- Removing the existing residence and outbuildings at Ascot Lodge
- Improving the road access entrance to the Ascot Lodge compound from General Holmes Drive, and to the Wentworth Avenue site from Beresford Street
- Establishing office facilities, staff and worker amenities, signage and fencing around the site compounds.

## Construction hours

Normal construction hours for the project will be from **7am to 6pm**, Mondays to Fridays and **8am to 1pm** on Saturdays, excluding public holidays.

Early work and setting up the site compounds will take about five weeks to complete and is scheduled to start from **Monday 16 January 2017**, weather permitting.

## Night work

In line with the project's Review of Environmental Factors, we will carry out work at night throughout major construction on this project. Night work is necessary on this project due to the traffic conditions in the area, and the limitations of working next to the Sydney Airport East West runway. Night work will be carried out from **9pm until 5am**, excluding Saturdays, weather permitting.

**A weekly schedule of upcoming work, including night work, will be available online and emailed to the project stakeholder list. If you would like to receive the weekly schedule, please email the project team at [comms.airporteast@jhg.com.au](mailto:comms.airporteast@jhg.com.au).**

**Members of the project team will be in the area in coming weeks to talk to the community about the project. If you would like more information about the upcoming work, contact the project team.**

## How will the work affect you?

There may be some noise associated with this work, in particular during removal of buildings at Ascot Lodge. However, we will make every effort to minimise noise by:

- Arranging the work at different locations
- Ensuring our work program provides opportunities for respite
- Attempting to complete the noisiest work before midnight
- Completing the work as quickly as possible to minimise disruption.

## Traffic changes

There will be some temporary traffic changes to ensure the work zone is safe. Lane closures will be in place and may affect travel times. Please keep to speed limits and follow the direction of traffic controllers and signs. For the latest traffic updates, you can call 132 701, visit [livetraffic.com](http://livetraffic.com) or download the Live Traffic NSW App.

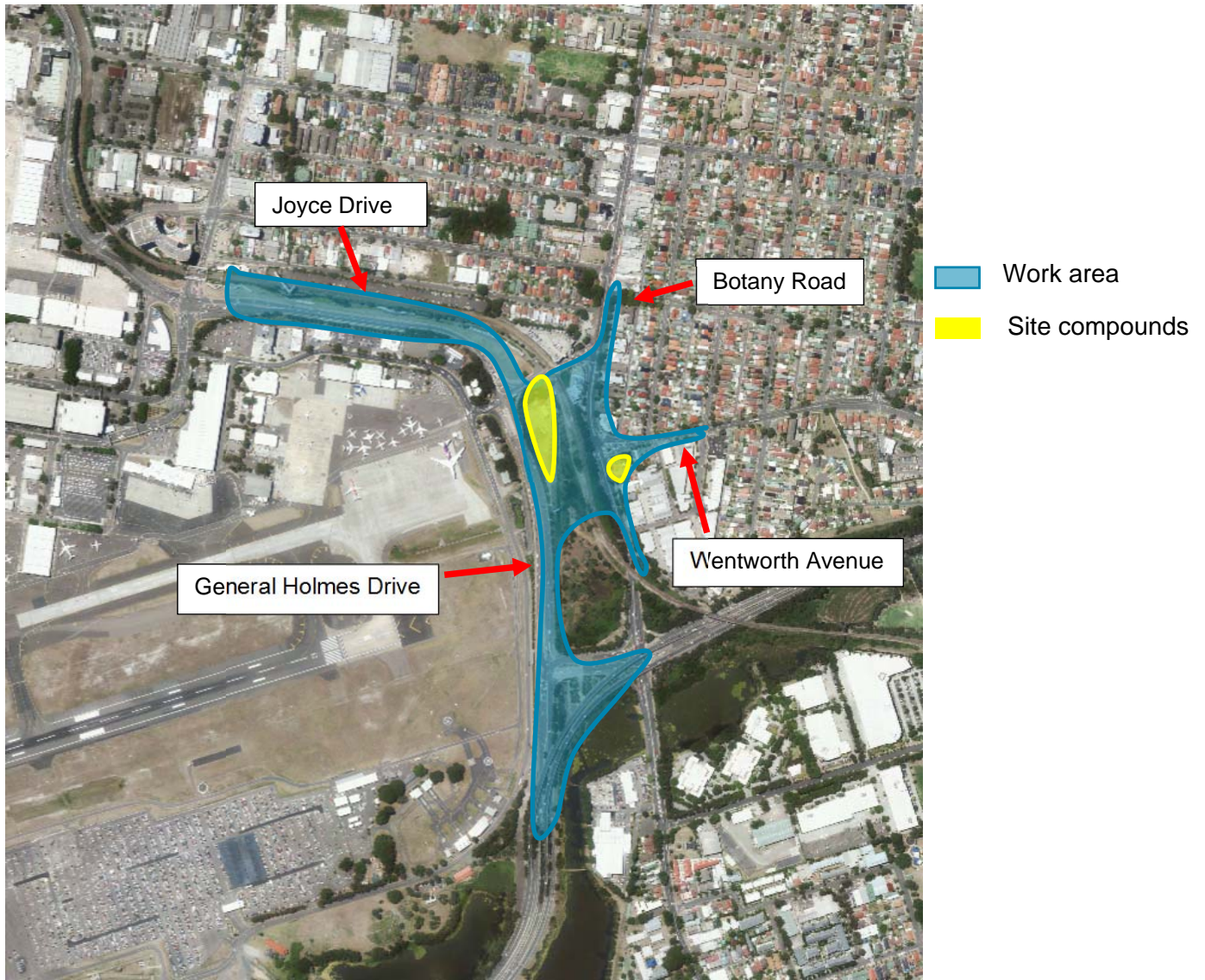
## Contact

If you have any questions, please call our delivery partner John Holland on 1300 862 844 or email [comms.airporteast@jhg.com.au](mailto:comms.airporteast@jhg.com.au). Visit [www.rms.nsw.gov.au/sydneyairport](http://www.rms.nsw.gov.au/sydneyairport) for more project information.

Thank you for your patience during this important work.

---

## Location of site compounds and work area



- Work area
- Site compounds



### Translating and Interpreting Service

If you need an interpreter, please call the Translating and Interpreting Service (TIS National) on **131 450** and ask them to telephone Roads and Maritime Services on 1300 862 844

#### Arabic

إذا كنتم بحاجة إلى مترجم، الرجاء الاتصال بخدمة الترجمة الخطية والشفهية (TIS National) على الرقم 1300 862 844، والطلب منهم الاتصال بوكالتكم Roads and Maritime Services على الرقم **131 450**

#### Cantonese

若你需要口譯員，請致電 **131 450** 聯絡翻譯和口譯服務署 (TIS National)，要求他們致電 1300 862 844 聯絡 Roads and Maritime Services。

#### Mandarin

如果你需要口译员，请致电 **131 450** 联系翻译和口译服务署 (TIS National)，要求他们致电 1300 862 844 联系 Roads and Maritime Services。

#### Greek

Αν χρειάζεστε διερμηνέα, παρακαλείστε να τηλεφωνήσετε στην Υπηρεσία Μετάφρασης και Διερμηνείας (Εθνική Υπηρεσία TIS) στο **131 450** και ζητήστε να τηλεφωνήσουν Roads and Maritime Services στο 1300 862 844

#### Italian

Se desiderate l'assistenza di un interprete, prego telefonare al Servizio Interpreti e Traduttori (TIS National) al **131 450** chiedendo di contattare Roads and Maritime Services al 1300 862 844

#### Korean

통역사가 필요하시면 번역통역서비스 (TIS National) 에 **131 450** 으로 연락하여 이들에게 1300 862 844 번으로 Roads and Maritime Services 에 전화하도록 요청하십시오.

#### Vietnamese

Nếu cần thông ngôn viên, xin quý vị gọi cho Dịch Vụ Thông Phiên Dịch (TIS Toàn Quốc) qua số **131 450** và nhớ họ gọi cho Roads and Maritime Services qua số 1300 862 844

