



Australian Government

BUILDING OUR FUTURE



March 2017

Airport East precinct upgrade – Airport runway shutdown work

The Australian and NSW Governments are upgrading roads in the Sydney Airport East precinct to improve traffic flow and access to the airport and Port Botany.

From **Friday 17 March to Monday 3 April 2017**, Roads and Maritime Services will need to carry out 16 consecutive days and nights of construction work during a scheduled shutdown of the Sydney Airport east west runway.

To protect the safety and efficiency of airport operations, there are height restrictions on operating construction equipment in the areas surrounding Sydney Airport. As a result, we can only carry out certain activities during airport curfew hours, or restricted runway operation periods.

Carrying out as much work as possible during runway shutdown periods will minimise the number of night work, and help reduce our impact on the community.

What to expect

During the runway shutdown will be carrying out piling work for the major road structures. Large piling machines will be used create foundations for:

- the new rail bridge for the Port Botany freight rail line
- the new bridge over Ascot canal, which will form part of the extension of Wentworth Avenue
- a new retaining wall next to General Holmes Drive.

Several different types of piles will be installed in these locations. Equipment and machinery used will include piling machines, trucks, excavators, cranes, lighting towers, concrete equipment and trucks, light vehicles and hand tools.

There will also be heavy vehicle movements and deliveries of equipment to the work sites during this time.

We have included a map to show the location of work and key piling locations.

Construction hours

We will carry out work **24 hours per day** during the runway shutdown, construction conditions and weather permitting. Not all work will be noisy during this time.

How will the work affect you?

There will be noise and dust associated with this work, in particular, during some of the piling activities. We will carry out the noisiest work during the day and evening shifts to minimise disruption to the local community. Where possible, we will carry out less noisy work at night. We will also carry out noise monitoring during these activities. Our project telephone line 1300 862 844 will be available at all times to deal with construction related issues.

We will continue to use water carts to reduce the amount of dust generated by our construction activities.

Traffic changes

There will be some temporary traffic changes to ensure the work zone is safe. Lane closures will be in place and may affect travel times.

Traffic controls will be in place on Botany Road between Bronti Street and Wentworth Avenue, and on General Holmes Drive, between Joyce Drive and Mill Pond Drive. Electronic message signs will be in place to advise motorists of changes to traffic conditions.

Temporary lane closure on General Holmes Drive

There is a closure of around 200 metres of the left hand lane on General Holmes Drive southbound, north of Mill Pond Drive as shown on the map below. The closure will be in place for around five months, which started from 11pm Sunday 26 February. This closure is necessary to build a new bridge over the Ascot canal for the Wentworth Avenue extension. Electronic message signs are in place to advise motorists of traffic changes.



Please keep to speed limits and follow the direction of traffic controllers and signs. For the latest traffic updates, you can call 132 701, visit livetraffic.com or download the Live Traffic NSW App.

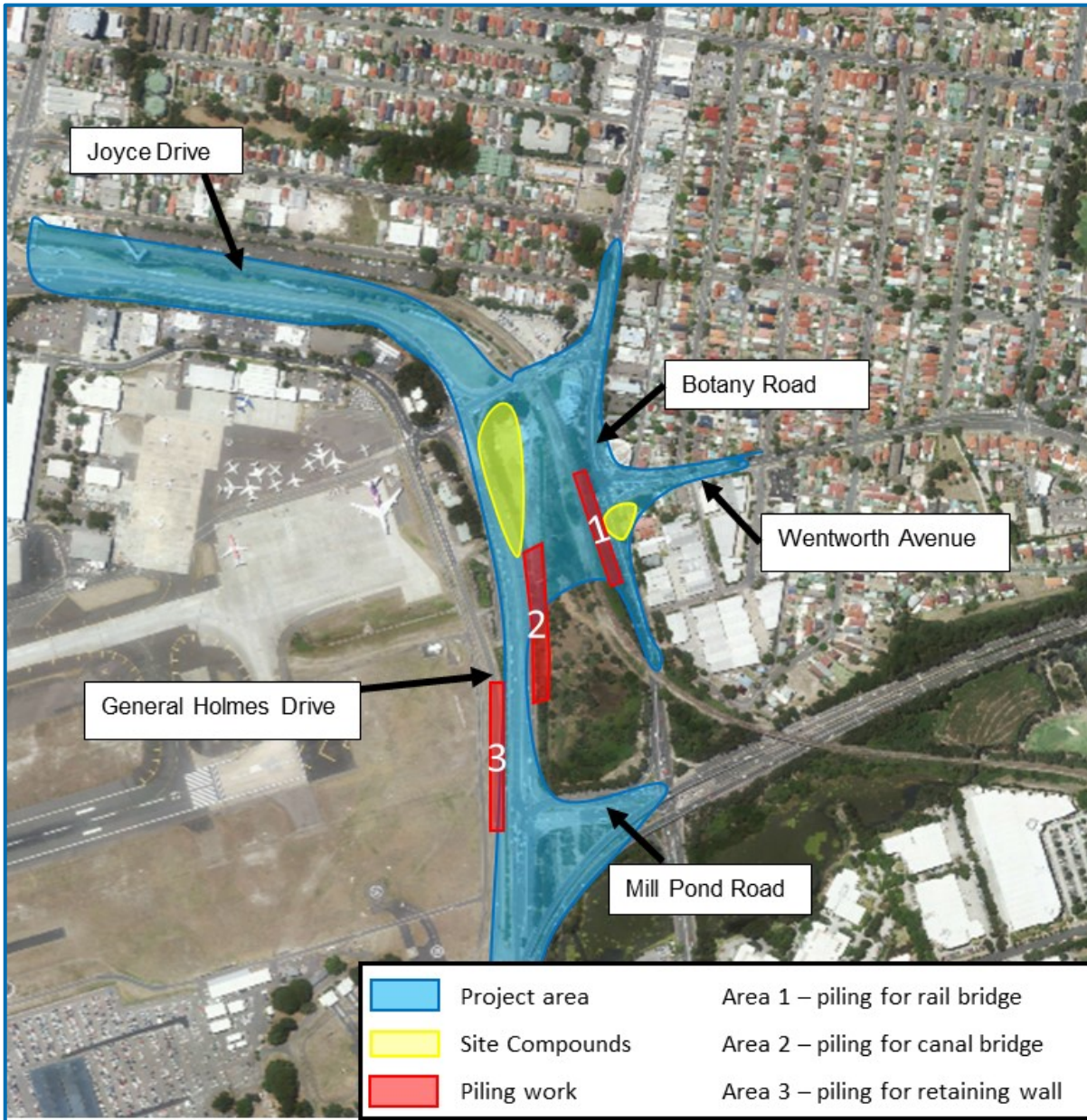
Contact

If you have any questions or need more information, please contact the project team on **1300 862 844** or comms.airporteast@jhg.com.au. For more information on this project, visit rms.nsw.gov.au/sydneyairport.

A weekly schedule of upcoming work, including night work, is available online and emailed to the project stakeholder list every Friday. If you would like to receive the weekly schedule, please email the project team at comms.airporteast@jhg.com.au.

We thank you for your patience during this important work to help build tomorrow's Sydney.

Location of work



Translating and Interpreting Service

If you need an interpreter, please call the Translating and Interpreting Service (TIS National) on **131 450** and ask them to telephone Roads and Maritime Services on 1300 862 844

Arabic

إذا كنتم بحاجة إلى مترجم، الرجاء الاتصال بخدمة الترجمة الخطية والشفهية (TIS National) على الرقم 1300 862 844، والطلب منهم الاتصال بوكالتكم Roads and Maritime Services على الرقم **131 450**

Cantonese

若你需要口譯員，請致電 **131 450** 聯絡翻譯和口譯服務署 (TIS National)，要求他們致電 1300 862 844 聯絡 Roads and Maritime Services。

Mandarin

如果你需要口译员，请致电 **131 450** 联系翻译和口译服务署 (TIS National)，要求他们致电 1300 862 844 联系 Roads and Maritime Services。

Greek

Αν χρειάζεστε διερμηνέα, παρακαλείσθε να τηλεφωνήσετε στην Υπηρεσία Μετάφρασης και Διερμηνείας (Εθνική Υπηρεσία ΤΙΣ) στο **131 450** και ζητήστε να τηλεφωνήσουν Roads and Maritime Services στο 1300 862 844

Italian

Se desiderate l'assistenza di un interprete, prego telefonare al Servizio Interpreti e Traduttori (TIS National) al **131 450** chiedendo di contattare Roads and Maritime Services al 1300 862 844

Korean

통역사가 필요하시면 번역통역서비스 (TIS National) 에 **131 450** 으로 연락하여 이들에게 1300 862 844 번으로 Roads and Maritime Services 에 전화하도록 요청하십시오.

Vietnamese

Nếu cần thông ngôn viên, xin quý vị gọi cho Dịch Vụ Thông Phiên Dịch (TIS Toàn Quốc) qua số **131 450** và nhờ họ gọi cho Roads and Maritime Services qua số 1300 862 844

