

## Airport North precinct – one-way change to O’Riordan Street and Robey Street, Mascot, from 14 October, 2017

**The NSW Government is preparing to upgrade roads north of Sydney’s Kingsford Smith Airport to improve traffic flow and connection to and from the Airport and Port Botany.**

As part of the Airport North precinct project, Roads and Maritime Services is working closely with Sydney Airport as it finishes work to widen and improve Qantas Drive around the entrance and exit to the Domestic Terminal.

On **14 October 2017**, Roads and Maritime will make two major permanent traffic changes in this area to improve traffic flow into and out of the Domestic Terminal and for road users travelling along Qantas Drive and Joyce Drive.

### Permanent traffic changes

- **O’Riordan Street will become one-way southbound, south of Robey Street.**  
This means there will be no entrance to O’Riordan Street from Joyce Drive or Qantas Drive.
- **Robey Street will become one-way eastbound between Qantas Drive and O’Riordan Street.**  
This means there will be no entrance to Robey Street from O’Riordan Street, except for vehicles for the Stamford Plaza Sydney Airport and Gateway 241 building.

Work to support the changes, including new asphalt, line marking and installation of new traffic signs will be completed before the changed traffic conditions are in place.

### What will the changes mean for you

Road users will need to take new slightly different routes, depending on their destination.

- Westbound road users on Joyce Drive, who need to go north on O’Riordan Street, **must turn right at Robey Street** instead.
- Eastbound road users on Qantas Drive, who need to go north on O’Riordan Street, **must turn left early at Robey Street** instead.
- Southbound road users on O’Riordan Street, who need to go west on Qantas Drive (towards the International Terminal) **can’t use Robey Street and must turn right at Qantas Drive** instead.

We have included a map to show the changed traffic conditions that will be in place from the morning of Saturday 14 October, 2017.

From Monday 16 October, the Route 305 inbound bus stop on O’Riordan Street near Robey Street will be closed and an alternative stop will be installed on Robey Street before O’Riordan Street, opposite the Stamford Plaza.

All road signs will be updated to reflect the changes, and electronic message signs in the area will help motorists with the changes.

---

Please allow extra travel time when the changes are new, as road users will be adjusting to the new arrangements in the area.

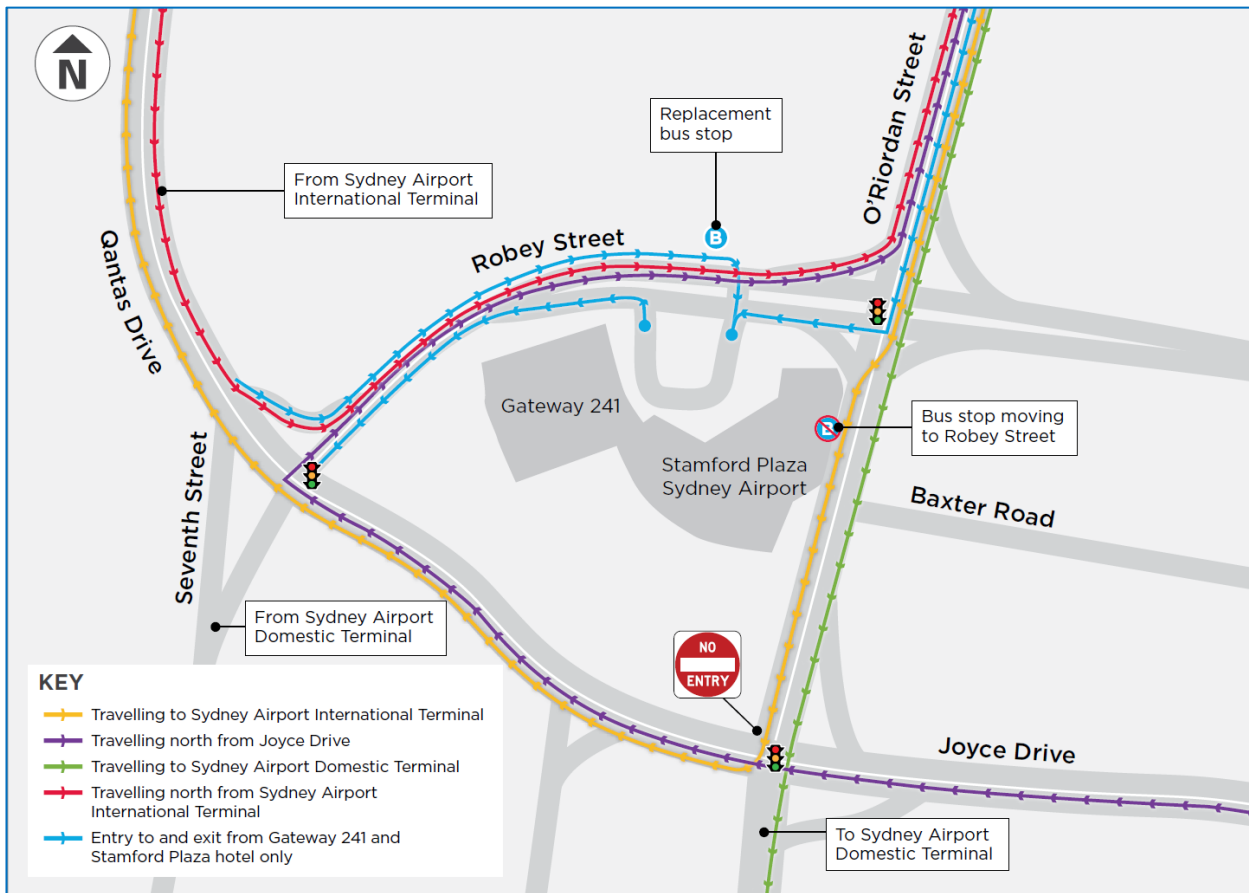
For the latest traffic updates, you can call 132 701, visit [livetraffic.com](http://livetraffic.com) or download the Live Traffic NSW App.

### Contact

If you have any questions, please contact the Community Information Line on **1300 862 844** or [airportnorth@rms.nsw.gov.au](mailto:airportnorth@rms.nsw.gov.au)

For more information on this project, visit [rms.nsw.gov.au/sydneyairport](http://rms.nsw.gov.au/sydneyairport). Thank you for your patience during this important work.

### Map of new traffic arrangements and alternative routes



### Translating and Interpreting Service

If you need an interpreter, please call the Translating and Interpreting Service (TIS National) on **131 450** and ask them to telephone Roads and Maritime Services on 1300 862 844

#### Arabic

إذا كنتم بحاجة إلى مترجم، الرجاء الاتصال بخدمة الترجمة الخطية والشفوية (TIS National) على الرقم 1300 862 844، والطلب منهم الاتصال بوكالتكم Roads and Maritime Services على الرقم 1300 862 844

#### Cantonese

若你需要口譯員，請致電 **131 450** 聯絡翻譯和口譯服務署 (TIS National)，要求他們致電 1300 862 844 聯絡 Roads and Maritime Services。

#### Mandarin

如果您需要口译员，请致电 **131 450** 联系翻译和口译服务署 (TIS National)，要求他们致电 1300 862 844 联系 Roads and Maritime Services。

#### Greek

Αν χρειάζεστε διερμηνέα, παρακαλείσθε να τηλεφωνήσετε στην Υπηρεσία Μετάφρασης και Διερμηνείας (Εθνική Υπηρεσία TIS) στο **131 450** και ζητήστε να τηλεφωνήσουν Roads and Maritime Services στο 1300 862 844

#### Italian

Se desiderate l'assistenza di un interprete, prego telefonare al Servizio Interpreti e Traduttori (TIS National) al **131 450** chiedendo di contattare Roads and Maritime Services al 1300 862 844

#### Korean

통역사가 필요하시면 번역통역서비스 (TIS National) 에 **131 450** 으로 연락하여 이들에게 1300 862 844 번으로 Roads and Maritime Services 에 전화하도록 요청하십시오.

#### Vietnamese

Nếu cần thông ngôn viên, xin quý vị gọi cho Dịch Vụ Thông Phiên Dịch (TIS Toàn Quốc) qua số **131 450** và nhờ họ gọi cho Roads and Maritime Services qua số 1300 862 844